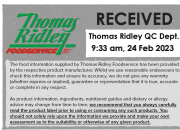




# MEADOW VALE FOODS LTD PRODUCT SPECIFICATION

18 & 19 Wilkinson Court, Clywedog Road South,  
Wrexham Ind Est, Wrexham LL13 9AE  
Tel: 01978 666100



Issue No **1 (10/01/2023 15:46:30)**  
Product Code **N1413901A**  
Product **Southern Fried Chicken Mini Fillets 40g**  
Product Description **Fully cooked chicken breast inner fillets in a crispy southern fried coating and individually quick-frozen.**

## PACKING CONFIGURATION

Product Attribute Target Piece Weight 40g, Tolerances (40g +/- 6g (34-46g) >80%), (40g +/-10g (30-50g) = 100%)  
Packs Per Case 10 x 1kg  
Case Net Weight 10kg  
Layers Per Pallet 6  
Cases Per Layer 10  
Cases Per Pallet 60  
Barcode Outer 05017400020571  
Barcode Inner 5017400108255  
Primary Packaging LLDPE Printed Bag W264 x L390mm - Tare Weight 21g  
Secondary Packaging B/C Flute Cardboard Case W295 x L395 x H270mm - Tare Weight 545g  
Shelflife from Manufacture 18 months  
Coding Details Best before DD MMM YYYY Lot XXXYYDDD  
Country of Origin Thailand  
Storage Conditions -18°C

## PRODUCT PROFILE

Appearance Typical of cooked chicken in a medium to dark orange coloured coating, visible black pepper flecks  
Flavour Typical of cooked chicken with a Southern Fried flavour and strong black pepper note in a crispy coating  
Texture Succulent and tender chicken breast, crispy coating  
Quality Standards Free from, off odours & flavours. Absent of foreign bodies. Whilst every care has been taken to produce this product, bones may remain.  
Ingredients Chicken Breast (64%), **Wheat** Flour, Water, Modified Tapioca Starch, Vegetable Oil (Palm, **Soya**), Starches (Potato, Tapioca, Maize), Salt, Maize Flour, Spices (contains **Mustard**, **Celery**), Sugar, Yeast Extract, Rice Flour, Dextrose, **Wheat** Gluten, Raising Agents (Sodium Carbonates, Diphosphates), Spice Extracts (Black Pepper, Chilli), Flavouring, Colour (Paprika Extract), Yeast, Herbs, Garlic, Onion.  
Quid Value 64%  
Allergy Warning For allergens, including cereals containing Gluten, see ingredients in **Bold**.

## REHEATING GUIDELINES

Re-Heat or Cook from For best results cook from frozen. The following instructions are guidelines only. If thawed, reduce cooking time accordingly. Always ensure product is piping hot and cooked throughout before serving.  
Oven Bake Pre-heat oven to 200°C / Gas Mark 6. Place the chicken on a baking tray at the centre of the oven for 15 - 20 minutes.  
Deep Fry Pre-heat the oil to 180°C. Gently lower and fully immerse the chicken into the hot oil and fry for 4 - 5 minutes. Drain and serve.  
Microwave  
Grill  
BBQ  
Thaw & Eat

<b>FOOD INTOLERANCE DATA</b>	Absent Of	Details
Added Salt	No	Salt
Added Sugar or Sweeteners	No	Sugar, Dextrose
Additives	No	Sodium Carbonates, Diphosphates, Colour (Paprika Extract)
Animal Proteins	No	Chicken
Artificial Colours	Yes	
Artificial Flavours	Yes	
Artificial Preservatives	Yes	
BHA / BHT	Yes	
Celery & Celery Derivatives	No	Spices (contains <b>Celery</b> )
Cereals Containing Gluten	No	<b>Wheat</b> Flour, <b>Wheat</b> Gluten
Corn or Maize	No	Maize Starch, Maize Flour
Crustaceans & Crustacea Derivatives	Yes	
Eggs & Egg Derivatives	Yes	
Fish & Fish Derivatives	Yes	
Genetically Modified Ingredients	Yes	
Milk & Milk Derivatives	Yes	
Mustard & Mustard Derivatives	No	Spices (contains <b>Mustard</b> )
Nuts & Nut Derivatives	Yes	
Peanuts & Peanut Derivatives	Yes	
Sesame Seeds & Sesame Oils	Yes	
Soya & Soya Derivatives	No	Unrefined <b>Soya</b> Oil
Spice & Spice Extracts	No	Spices (contains <b>Mustard</b> , <b>Celery</b> ), Spice Extracts (Black Pepper, Chilli)
Starch / Modified Starches	No	Modified Tapioca Starch, Potato Starch, Tapioca Starch, Maize Starch
Sulphur Dioxide & Sulphites	Yes	
Wheat & Wheat Derivatives	Yes	
Yeast & Yeast Derivatives	No	Yeast Extract, Yeast
Lupin & Lupin Derivatives	Yes	
Molluscs & Mollusc Derivatives	Yes	

<b>PRODUCT SUITABILITY</b>	Suitable For	Details
Halal	Yes	
Kosher	No	
Vegetarians	No	
Vegans	No	
Lactose Intolerance	No	
Coeliacs	No	

<b>NUTRITIONAL INFORMATION</b>		RI% (Adults)	%
Typical Values per 100g as	Sold		
Energy	788kJ / 188kcal	8400kj/2000kcal	9.4%
Fat	8.3g	70g	11.86%
of which Saturates	2.1g	20g	10.5%
Carbohydrates	11g	260g	4.23%
of which Sugars	<0.5g	90g	0.56%
Dietary Fibre	1.3g	24g	5.42%
Protein	16g	50g	32%
Salt	1.4g	6g	23.33%

<b>MICROBIOLOGICAL INFORMATION</b>	
<i>S. aureus</i>	< 100 cfu/g
<i>Salmonella spp</i>	Absent in 25g
TVC	< 100,000 cfu/g
<i>Coliforms (cfu/g)</i>	< 1,000 cfu/g
<i>Escherichia Coli</i>	< 100 cfu/g
<i>Listeria Monocytogenes</i>	Absent in 25g

Signed on the behalf of Meadow Vale Foods Ltd



Mr Jamie Payne Group Technical Manager

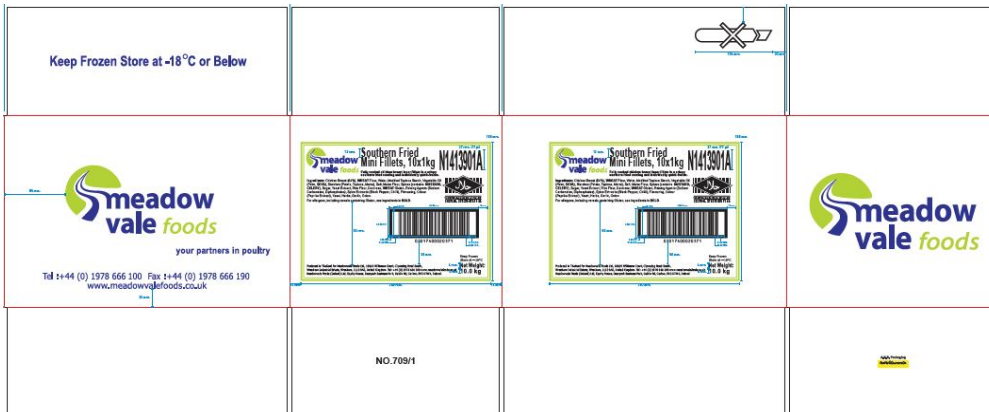
This specification and information contained within it: constitutes confidential information of Meadow Vale Foods Ltd. As such it is not to be disclosed to any third party in any event without the prior written consent of Meadow Vale Foods Ltd. It has been prepared in good faith by Meadow Vale Foods Ltd. and was accurate at the date of issue. The customer acknowledges that it has been given the opportunity to review and approve its content, which will be deemed to be accepted and agreed unless express written notice to the contrary is served upon Meadow Vale Foods Ltd. by customer in relation to future orders only; has been issued for the sole purpose of giving customer information of the Goods to be supplied and will not form part of any contract between Meadow Vale Foods Ltd. and the customer. Uncontrolled copy



Artwork 1



Artwork 2



Artwork 3