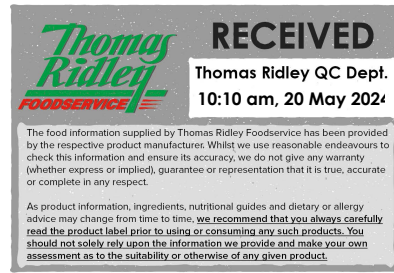


Changed Jan 20, 2023 14:03

Erudus ID 0ffe50c1bec3493f8ca7d08bcff0a337

Version 1.0



10719

# Sombrero Pear Halves in Juice 2.5kg

Sombrero Pear Halves In Juice 2.5kg

## PRODUCT DESCRIPTION

Pear Halves in Juice 2.5kg

|                           |                                  |
|---------------------------|----------------------------------|
| Brand                     | Ivory & Ledoux Ltd               |
| Manufacturer Product Code | PRHSJ3                           |
| Product Type              | Food                             |
| Product Category          | Fruit - Canned                   |
| Storage Type              | Ambient                          |
| Erudus ID                 | 0ffe50c1bec3493f8ca7d08bcff0a337 |
| Specification Type        | Legacy                           |
| Inner Component GTIN      | 5021006020194                    |
| Outer Case GTIN           | 05021006020200                   |



## INGREDIENTS

### Ingredient Declaration

Pear (60%), Water, Pear Juice, Citric Acid.

## ALLERGENS

Product Contains:

|   |    |
|---|----|
| <b>Celery/Celeriac</b>                      | No |
| <b>Cereals Containing Gluten</b>            | No |
| <b>Barley</b>                               | No |
| <b>Oats</b>                                 | No |
| <b>Rye</b>                                  | No |
| <b>Wheat (including Spelt and Khorasan)</b> | No |
| <b>Crustacea</b>                            | No |
| <b>Eggs</b>                                 | No |
| <b>Fish</b>                                 | No |
| <b>Lupin</b>                                | No |
| <b>Milk</b>                                 | No |
| <b>Molluscs</b>                             | No |
| <b>Mustard</b>                              | No |
| <b>Nuts (Tree)</b>                          | No |
| <b>Almond nuts</b>                          | No |
| <b>Brazil nuts</b>                          | No |
| <b>Cashew nuts</b>                          | No |
| <b>Hazelnuts</b>                            | No |
| <b>Macadamia (Queensland) nuts</b>          | No |
| <b>Pecan nuts</b>                           | No |
| <b>Pistachio nuts</b>                       | No |
| <b>Walnuts</b>                              | No |
| <b>Peanuts</b>                              | No |
| <b>Sesame Seeds</b>                         | No |
| <b>Soybeans</b>                             | No |
| <b>Sulphur Dioxide and Sulphites</b>        | No |

SUPPLEMENTARY INGREDIENT INFORMATION

|                                       |    |
|---------------------------------------|----|
| <b>Palm Oil</b>                       | No |
| <b>Hydrogenated Vegetable Oil/Fat</b> | No |
| <b>GM Protein/DNA</b>                 | No |

ADDITIVES

Product Contains:

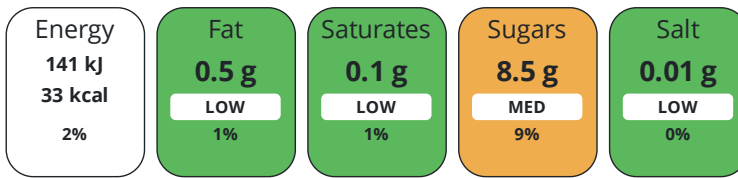
|                                     |    |
|-------------------------------------|----|
| <b>Artificial Antioxidants</b>      | No |
| <b>Artificial Colours</b>           | No |
| <b>Artificial Flavour Enhancers</b> | No |
| <b>Artificial Flavourings</b>       | No |
| <b>Artificial Preservatives</b>     | No |
| <b>Artificial Sweeteners</b>        | No |

DIET SUITABILITY

|                              |              |                        |              |
|------------------------------|--------------|------------------------|--------------|
| <b>Suitable for Coeliacs</b> | No           | <b>Halal Diet</b>      | No           |
| <b>Kosher Diet</b>           | No           | <b>Vegetarian Diet</b> | Suitable for |
| <b>Vegan Diet</b>            | Suitable for |                        |              |

NUTRITIONAL INFORMATION

Each 100g/ml portion contains:



of your reference intake.

Typical values per 100g/ml : Energy 33kcal / 141kj

| Nutrient           | per 100g/ml | RI per 100g/ml |
|--------------------|-------------|----------------|
| Energy (kJ)        | 141 kJ      | 2%             |
| Energy (kcal)      | 33 kcal     | 2%             |
| Fat                | 0.5 g       | 1%             |
| of which Saturates | 0.1 g       | 1%             |
| Carbohydrate       | 8.5 g       | 3%             |
| of which Sugars    | 8.5 g       | 9%             |
| Fibre              | 1.4 g       |                |
| Protein            | 0.3 g       | 1%             |
| Salt               | 0.01 g      | 0%             |

#### SUPPLEMENTARY NUTRITIONAL INFORMATION

HFSS (HIGH IN FAT, SALT AND SUGAR)

**HFSS Status** No

#### HANDLING & STORAGE INFORMATION

**Directions For Use**

-

**Storage Instructions**

Keep dry and store at ambient temperature. After opening transfer to an airtight non-metallic container and refrigerate. Eat within 1 day of opening.

**Shelf Life from Time of Production**

1095 Days

#### ACCREDITATIONS/ CERTIFICATIONS/ ASSURANCE SCHEMES

**BRCGS Certified**

**Other Accreditation**

#### ORIGIN

**Product Country of Origin/Place of** China

**Provenance**

**Additional Origin Details**

-

#### PRODUCT CHARACTERISTICS

Standards Testing

#### CONFIGURATION

Case Configuration

**Total Quantity of Inner Components in Outer Case**

6 Units

**Is the Outer Case Splittable?**

Yes

Inner Pack Configuration

PRODUCT WEIGHTS

Inner Component

|                                      |         |
|--------------------------------------|---------|
| <b>Variable Weight Consumer Item</b> | No      |
| <b>Net Drained Weight</b>            | 1.5 kg  |
| <b>Weight/Volume</b>                 | 2.5kg   |
| Outer Case                           |         |
| <b>Outer Case Gross Weight</b>       | 16.9 kg |
| <b>Outer Case Net Weight</b>         | 15 kg   |

PRODUCT DIMENSIONS

Inner Component

|                               |        |
|-------------------------------|--------|
| <b>Inner Component Depth</b>  | 155 mm |
| <b>Inner Component Width</b>  | 155 mm |
| <b>Inner Component Height</b> | 155 mm |

Outer Case

|                          |        |
|--------------------------|--------|
| <b>Outer Case Depth</b>  | 470 mm |
| <b>Outer Case Width</b>  | 320 mm |
| <b>Outer Case Height</b> | 155 mm |

PALLET INFORMATION

|   |           |
|---|-----------|
| <b>Quantity of Cases Per Pallet Layer</b> | 7 Cases   |
| <b>Quantity of Layers Per Pallet</b>      | 9 Layers  |
| <b>Quantity of Cases Per Pallet</b>       | 63 Cases  |
| <b>Pallet Height</b>                      | 1.6 MTR   |
| <b>Pallet Gross Weight</b>                | 1084.7 kg |

PACKAGING

Inner Component Packaging

| Type | Materials       | Weight | Recycled Plastic % | Recyclable | Returnable | Composite |
|------|-----------------|--------|--------------------|------------|------------|-----------|
| Can  | Paper/Cardboard | 1 g    | - %                |            |            |           |
| Can  | Steel           | 256 g  | - %                |            |            |           |

Outer Case Packaging

| Type | Materials       | Weight | Recycled Plastic % | Recyclable | Returnable | Composite |
|------|-----------------|--------|--------------------|------------|------------|-----------|
| Case | Paper/Cardboard | 370 g  | - %                |            |            |           |

OTHER INFORMATION

|                             |          |
|-----------------------------|----------|
| <b>Intrastat/Taric Code</b> | 20084059 |
|-----------------------------|----------|

Manufacturer Comments

-

## CONTACT INFORMATION

### Address

Ivory & Ledoux Ltd  
Bridge House  
London  
SE1 9QQ  
United Kingdom

P: (Phone) Tel: 020 7887 0770

### Technical Contact

Peter Moor  
Technical Director  
peter.moor@ivory-ledoux.co.uk

P: (Phone) 0207 887 0770

### Complaints Contact

Cornelia Hagi  
Technical Assistant  
cornelia.hagi@ivory-ledoux.co.uk

P: (Phone) 02079071971

### Commercial Contact

Daniel Glazer  
Trading Director  
daniel.glazer@ivory-ledoux.co.uk

P: (Phone) 02079071947

The information on the [Erudus System](#) has been supplied by the manufacturers of the products and, whilst the owners of the Erudus System take steps to ensure the information is regularly updated, they give no warranty and no guarantee that the information is accurate. Product information and ingredients may change, please always read product labels carefully in addition to using the information provided by Erudus.

We do not accept liability for any inaccuracies or incorrect information contained on this site.  
Please visit <http://www.erudus.com/terms-and-conditions> for full terms and conditions.