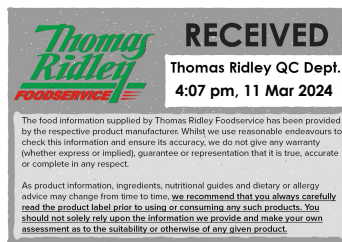


Changed Mar 11, 2024 15:39

Reviewed Mar 11, 2024 15:39

Erudus ID 2a1de854389f4c0c9fb16dc22f7fed5a

Version 2.0



10723

Cloverleaf Tuna Chunks in Brine 1.705kg

Cloverleaf Tuna Chunks In Brine 1.705kg 6x1x1.71kg

PRODUCT DESCRIPTION

Tuna Chunks in Brine

Brand	Martin Mathew & Co Ltd
Manufacturer Product Code	A15628
Manufacturer Version	1
Number	
Product Type	Food
Product Category	Other
Storage Type	Ambient
Erudus ID	2a1de854389f4c0c9fb16dc22f7fed5a
Specification Type	Generic
Inner Component GTIN	5017482000348
Inner Pack GTIN	5017482005015
Inner Pack Product Code	A15628
Outer Case GTIN	05017482004018



INGREDIENTS

Ingredient Declaration

Tuna Chunks (FISH) , water, salt

ALLERGENS

Product Contains:

Celery/Celeriac	No	Mustard	No
Cereals Containing Gluten	No	Nuts (Tree)	No
Barley	No	Almond nuts	No
Oats	No	Brazil nuts	No
Rye	No	Cashew nuts	No
Wheat (including Spelt and Khorasan)	No	Hazelnuts	No
Crustacea	No	Macadamia (Queensland) nuts	No
Eggs	No	Pecan nuts	No
Fish	Yes	Pistachio nuts	No
Lupin	No	Walnuts	No
Milk	No	Peanuts	No
Molluscs	No	Sesame Seeds	No
		Soybeans	No
		Sulphur Dioxide and Sulphites	No

Additional Allergen Information

Fish Present

SUPPLEMENTARY
INGREDIENT
INFORMATION

Palm Oil	No
Hydrogenated Vegetable Oil/Fat	No
GM Protein/DNA	No

ADDITIVES

Product Contains:

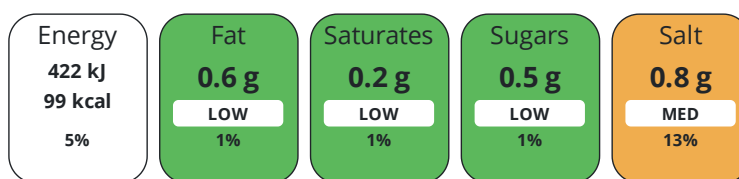
Artificial Antioxidants	No	Artificial Flavourings	No
Artificial Colours	No	Artificial Preservatives	No
Artificial Flavour Enhancers	No	Artificial Sweeteners	No

DIET
SUITABILITY

Vegan Diet	No	Vegetarian Diet	No
Halal Diet	No	Kosher Diet	Suitable for

NUTRITIONAL
INFORMATION

Each 100g/ml portion contains:



of your reference intake.

Typical values per 100g/ml : Energy 99kcal / 422kJ

Nutrient	per 100g	RI per 100g	per 60g serving	RI per 60g serving	per 60g of prepared product
Energy (kJ)	422 kJ	5%	253.2 kJ	3%	-
Energy (kcal)	99 kcal	5%	59.4 kcal	3%	-
Fat	0.6 g	1%	0.4 g	1%	-
of which Saturates	0.2 g	1%	0.1 g	1%	-
Carbohydrate	< 0.5 g	0%	0.3 g	0%	-
of which Sugars	< 0.5 g	1%	0.3 g	0%	-
Fibre	< 0.5 g		0.3 g		-
Protein	23.5 g	47%	14.1 g	28%	-
Salt	0.8 g	13%	0.5 g	8%	-
Sodium	< 0.01 mg		-		-
Serving Size	60 g				
Serving Size Description	as sold				
Number of Servings	20 Servings				

Source of Nutritional Information Manufacturers analysis

SUPPLEMENTARY
NUTRITIONAL
INFORMATION

HANDLING &
STORAGE
INFORMATION

Directions For Use

ready for use

Storage Instructions

dry ambient storage

Shelf Life from Time of Production	1095 Days	Exempt From Shelf Life Labelling	No
Shelf Life From Opening	3 Days		

ORIGIN	Product Country of Origin/Place of Provenance		Ghana				
PRODUCT CHARACTERISTICS	Standards Testing						
	Do you undertake trend analysis of microbiological results?	Yes	Is shelf life testing undertaken?		Yes		
	Analytical Standards		Commercially Sterile		Yes		
CONFIGURATION	Case Configuration		Inner Pack Configuration				
	Total Quantity of Inner Components in Outer Case	6 Units	Is Inner Pack Splittable?		No		
	Total Quantity of Inner Packs in Outer Case	6 Units	Quantity of Inner Components in Inner Pack		1		
	Is the Outer Case Splittable?	Yes					
PRODUCT WEIGHTS	Inner Component		Inner Pack				
	Variable Weight Consumer Item	No	Inner Pack Gross Weight		1.9 kg		
	Inner Component Weight	1.71 kg	Inner Pack Net Weight		1.7 kg		
	Net Drained Weight	1.2 kg					
	e mark	Yes					
	Outer Case						
PRODUCT DIMENSIONS	Inner Component		Inner Pack				
	Inner Component Depth	420 mm	Inner Pack Depth		140 mm		
	Inner Component Width	125 mm	Inner Pack Width		140 mm		
	Inner Component Height	315 mm	Inner Pack Height		130 mm		
	Outer Case						
	Outer Case Depth	420 mm					
	Outer Case Width	320 mm					
	Outer Case Height	130 mm					
PALLET INFORMATION	Quantity of Cases Per Pallet Layer	12 Cases	Pallet Height		1.2 MTR		
	Quantity of Layers Per Pallet	7 Layers	Pallet Gross Weight		1080 kg		
	Quantity of Cases Per Pallet	84 Cases					
PACKAGING	Inner Component Packaging						
	Type	Materials	Weight	Recycled Plastic %	Recyclable	Returnable	Composite
	Can	Paper/Cardboard	8 g	- %			
	Can	Steel	210 g	- %			
	Outer Case Packaging						
	Type	Materials	Weight	Recycled Plastic %	Recyclable	Returnable	Composite
	Case	Paper/Cardboard	280 g	- %			

OTHER
INFORMATION

Manufacturer Comments

On receipt of this spec for use with our products, please sign and return by e mail or hard copy. Once utilised, if no confirmation is received within 4 weeks it will be assumed the specification is acknowledged and accepted. Any formulation changes or allergen updates on our products will be displayed on pack.

CONTACT
INFORMATION

Address

Martin Mathew & Co Ltd
50a St Andrew Street
Hertford
Herts
SG14 1JA
United Kingdom

P. (Phone) 01992641641

The information on the [Erudus System](#) has been supplied by the manufacturers of the products and, whilst the owners of the Erudus System take steps to ensure the information is regularly updated, they give no warranty and no guarantee that the information is accurate. Product information and ingredients may change, please always read product labels carefully in addition to using the information provided by Erudus.

We do not accept liability for any inaccuracies or incorrect information contained on this site.
Please visit <http://www.erudus.com/terms-and-conditions> for full terms and conditions.