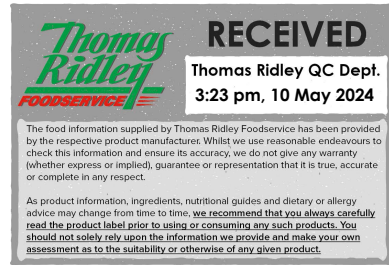


Changed May 10, 2024 06:23
Reviewed May 10, 2024 06:23
Erudus ID f8425681b16e492a942b4894cf165772
Version 2.0



10828

Cooked & Peeled Prawns 5 x 2kg (5 x 1.76kg net weight without glaze)

Prawns 5x1.76kg

PRODUCT DESCRIPTION

Iceland Seas IQF C&P Cold Water Prawns 5 x 2kg (5 x 1.76kg net weight without glaze) 150/250

Brand	Seahawk Marine Foods Ltd
Manufacturer Product Code	MSC/21520
Product Type	Food
Product Category	Prawns, Shrimp & Scampi
Storage Type	Frozen
Erudus ID	f8425681b16e492a942b4894cf165772
Specification Type	Fish and Seafood
Inner Component GTIN	5690886520102
Outer Case GTIN	5690886522021



INGREDIENTS

Ingredient Declaration

Prawns, (CRUSTACEAN), Water, Salt

ALLERGENS

Product Contains:

Celery/Celeriac	No
Cereals Containing Gluten	No
Barley	No
Oats	No
Rye	No
Wheat (including Spelt and Khorasan)	No
Crustacea	Yes
Eggs	No
Fish	No
Lupin	No
Milk	No
Molluscs	No
Mustard	No
Nuts (Tree)	No
Almond nuts	No
Brazil nuts	No
Cashew nuts	No
Hazelnuts	No
Macadamia (Queensland) nuts	No
Pecan nuts	No
Pistachio nuts	No
Walnuts	No
Peanuts	No
Sesame Seeds	No
Soybeans	No
Sulphur Dioxide and Sulphites	No

SUPPLEMENTARY INGREDIENT INFORMATION

Palm Oil	No
Hydrogenated Vegetable Oil/Fat	No
GM Protein/DNA	No

ADDITIVES

Product Contains:

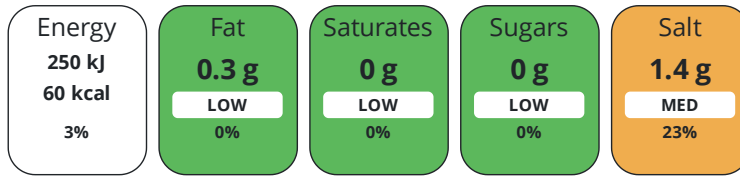
Artificial Antioxidants	No
Artificial Colours	No
Artificial Flavour Enhancers	No
Artificial Flavourings	No
Artificial Preservatives	No
Artificial Sweeteners	No

DIET SUITABILITY

Halal Diet	No	Kosher Diet	No
-------------------	----	--------------------	----

NUTRITIONAL INFORMATION

Each 100g/ml portion contains:



of your reference intake.

Typical values per 100g/ml : Energy 60kcal / 250kj

Nutrient	per 100g	RI per 100g
Energy (kJ)	250 kJ	3%
Energy (kcal)	60 kcal	3%
Fat	0.3 g	0%
of which Saturates	0 g	0%
Carbohydrate	0 g	0%
of which Sugars	0 g	0%
Protein	14.3 g	29%
Salt	1.4 g	23%

SUPPLEMENTARY NUTRITIONAL INFORMATION

HANDLING & STORAGE INFORMATION

Directions For Use

This product is ready to eat after defrosting. Once defrosted store at 0°C - +5°C and consume within 24 hours.

Storage Instructions

Store at -18°C or below.

Shelf Life from Time of Production

730 Days

Exempt From Shelf Life Labelling

No

ACCREDITATIONS/ CERTIFICATIONS/ ASSURANCE SCHEMES

BRCGS Certified

Marine Stewardship Council (MSC)

ORIGIN

Product Country of Origin/Place of

Other

Provenance

Additional Origin Details

Trawl caught in North Atlantic Waters FAO 27

PRODUCT CHARACTERISTICS

Standards Testing

Do you undertake trend analysis of microbiological results?

Yes

Is shelf life testing undertaken?

Yes

Microbiological Standards

Organism	Description	Frequency	Target	Maximum	Sample (g or ml)
Coliforms (cfu/g or ml)		Every Batch	<100	1000	25
E. Coli (cfu/g or ml)		Every Batch	<10	100	25
Listeria Monocytogenes (cfu/g or ml)		Every Batch	=0	10	25
Staphylococcus Aureus (cfu/g or ml)		Every Batch	<50	500	25
Salmonella (cfu/g or ml)		Every Batch	<0	10	25

Organism	Description	Frequency	Target	Maximum	Sample (g or ml)
Aerobic Colony Count (ACC) (cfu/g or ml)		Every Batch	<100000	1000000	25

CONFIGURATION
Case Configuration

Total Quantity of Inner Components in Outer Case	5 Units
Is the Outer Case Splittable?	Yes
Inner Pack Configuration	

PRODUCT WEIGHTS
Inner Component

Variable Weight Consumer Item	No
Inner Component Weight	1.76 kg
Net Drained Weight	1.76 kg

Outer Case

Outer Case Gross Weight	10 kg
Outer Case Net Weight	8.8 kg

PRODUCT DIMENSIONS
Inner Component

Inner Component Depth	0 mm
Inner Component Width	0 mm
Inner Component Height	0 mm

Outer Case

Outer Case Depth	380 mm
Outer Case Width	238 mm
Outer Case Height	242 mm

PALLET INFORMATION

Quantity of Cases Per Pallet Layer	13 Cases
Quantity of Layers Per Pallet	8 Layers
Quantity of Cases Per Pallet	104 Cases
Pallet Height	1.7 MTR

PACKAGING

Inner Component Packaging

Type	Materials	Weight	Recycled Plastic %	Recyclable	Returnable	Composite
Bag	Plastic	20 g	- %			

Outer Case Packaging

Type	Materials	Weight	Recycled Plastic %	Recyclable	Returnable	Composite
Case	Paper/Cardboard	340 g	- %			

OTHER INFORMATION

CONTACT INFORMATION

Address

Seahawk Marine Foods Ltd
Broadleigh House
Woodmarsh
North Bradley, Trowbridge
Wiltshire
BA14 0SA
United Kingdom

P: (Phone) 01225 768461

Technical Contact

Caitlin Vowles
Technical Manager
caitlin@seahawk.co.uk

P: (Phone) 02075389244

Complaints Contact

Caitlin Vowles
Technical Manager
caitlin@seahawk.co.uk

P: (Phone) 01225 768461

Commercial Contact

James Morgan
Foodservice Manager
james@seahawk.co.uk

P: (Phone) 07979 692339

The information on the [Erudus System](#) has been supplied by the manufacturers of the products and, whilst the owners of the Erudus System take steps to ensure the information is regularly updated, they give no warranty and no guarantee that the information is accurate. Product information and ingredients may change, please always read product labels carefully in addition to using the information provided by Erudus.

We do not accept liability for any inaccuracies or incorrect information contained on this site.
Please visit <http://www.erudus.com/terms-and-conditions> for full terms and conditions.