


Changed Apr 10, 2024 14:40

Reviewed Apr 10, 2024 14:40

Erudus ID aab21488bb7244e3bf63117c675cf9fa

Version 2.1




RECEIVED

Thomas Ridley QC Dept.
11:00 am, 11 Apr 2024

The food information supplied by Thomas Ridley Foodservice has been provided by the respective product manufacturer. Whilst we use reasonable endeavours to check this information and ensure its accuracy, we do not give any warranty (whether express or implied), guarantee or representation that it is true, accurate or complete in any respect.

As product information, ingredients, nutritional guides and dietary or allergy advice may change from time to time, we recommend that you always carefully read the product label prior to using or consuming any such products. You should not solely rely upon the information we provide and make your own assessment as to the suitability or otherwise of any given product.



10830

Hill Custard Creams (HI15015CC) 150g X 15

Custard Creams

PRODUCT DESCRIPTION

Custard Cream Biscuits - Pale golden brown mild vanilla flavour baked biscuit shells with embossed patterned surface with wording "CUSTARD CREAMS" filled with pale yellow vanilla flavour filling. Typically 12 biscuits per 150g packet. 15 printed film wrapped 150g packets packed in a printed fibreboard case.

Brand	Hill Biscuits
Manufacturer Product Code	HI15015CC
Manufacturer Version	07
Number	
Product Type	Food
Product Category	Other
Storage Type	Ambient
Erudus ID	aab21488bb7244e3bf63117c675cf9fa
Specification Type	Generic



Custard Cream

Inner Component GTIN	05010282013037
Manufacturer Component Code	HI15015CC
Outer Case GTIN	05010282013037



INGREDIENTS

Ingredient Declaration

Fortified **WHEAT** Flour (**WHEAT** Flour, Calcium Carbonate, Iron, Nicotinamide, Thiamin), Vegetable Oils (Palm, Palm Kernel, Rapeseed in varying proportions), Sugar, Dextrose, **WHEAT** Starch, Raising Agents (Sodium Hydrogen Carbonate, Ammonium Hydrogen Carbonate), Whey Powder (**MILK**), Salt, Flavouring, Colour (Beta-carotene).

ALLERGENS

Product Contains:

Celery/Celeriac	No	Mustard	No
Cereals Containing Gluten	Yes	Nuts (Tree)	No
Barley	No	Almond nuts	No
Oats	No	Brazil nuts	No
Rye	No	Cashew nuts	No
Wheat (including Spelt and Khorasan)	Yes	Hazelnuts	No
Crustacea	No	Macadamia (Queensland) nuts	No
Eggs	No	Pecan nuts	No
Fish	No	Pistachio nuts	No
Lupin	No	Walnuts	No
Milk	Yes	Peanuts	No
Molluscs	No	Sesame Seeds	No
		Soybeans	May Contain
		Sulphur Dioxide and Sulphites	No

Risk Source:

Soybeans (Risk Source)

Line

Allergen Statement On Pack

For allergens, including cereals containing gluten, see ingredients in BOLD. May also contain soya.

Additional Allergen Information

May also contain soya.

SUPPLEMENTARY
INGREDIENT
INFORMATION

Palm Oil	Yes
Hydrogenated Vegetable Oil/Fat	No
GM Protein/DNA	No

ADDITIVES

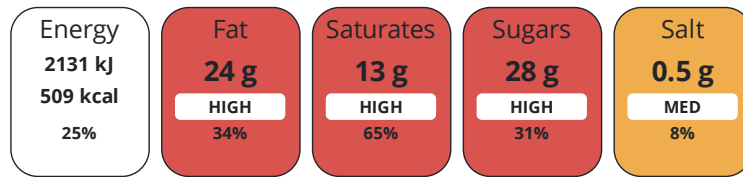
Product Contains:

Artificial Antioxidants	No	Artificial Flavourings	Yes
Artificial Colours	No	Artificial Preservatives	No
Artificial Flavour Enhancers	No	Artificial Sweeteners	No
Vegan Diet	No	Vegetarian Diet	Certified
Halal Diet	Suitable for	Kosher Diet	Suitable for

DIET
SUITABILITY

NUTRITIONAL
INFORMATION

Each 100g/ml portion contains:



of your reference intake.

Typical values per 100g/ml : Energy 509kcal / 2131kj

Nutrient	per 100g	RI per 100g	per 1g serving	RI per 1g serving	per 12.7g of prepared product
Energy (kJ)	2131 kJ	25%	21.3 kJ	0%	-
Energy (kcal)	509 kcal	25%	5.1 kcal	0%	-
Fat	24 g	34%	0.2 g	0%	-
of which Saturates	13 g	65%	0.1 g	1%	-
Carbohydrate	68 g	26%	0.7 g	0%	-
of which Sugars	28 g	31%	0.3 g	0%	-
Fibre	1.8 g	-	-	-	-
Protein	4.5 g	9%	-	-	-
Salt	0.5 g	8%	-	-	-

Serving Size	1 g
Serving Size Description	1 Biscuit
Number of Servings	12 Servings

Source of Nutritional Information Manufacturers analysis

SUPPLEMENTARY
NUTRITIONAL
INFORMATION

HFSS (HIGH IN
FAT, SALT AND
SUGAR)

HFSS Status	Yes
HFSS Score	23

HANDLING &
STORAGE
INFORMATION

Directions For Use

NA - ready to eat

Storage Instructions

Store in a cool, dry place away from odoriferous materials.

Storage Instructions After Opening

Once packet is opened, store in an airtight container.

ACCREDITATIONS/
CERTIFICATIONS/
ASSURANCE
SCHEMES

Shelf Life from Time of Production	364 Days	Exempt From Shelf Life Labelling	No
BRCGS Certified		BRCGS Food Safety	
Roundtable of Sustainable Palm Oil (RSPO)		Sedex	
The Vegetarian Society		Other Accreditation	

ORIGIN

Product Country of Origin/Place of Provenance	United Kingdom
--	----------------

Additional Origin Details

NA

PRODUCT
CHARACTERISTICS

Standards Testing	
Do you undertake trend analysis of microbiological results?	Yes
Is shelf life testing undertaken?	Yes
Commercially Sterile	No

Microbiological Standards

Organism	Description	Frequency	Target	Maximum	Sample (g or ml)
E. Coli (cfu/g or ml)	Test Method TP4133 based on BS ISO 16649-2:2001 using TBX agar	Annually	<10	10	1
Enterobacteriaceae (cfu/g or ml)	Test Method TP4103 based on BS EN ISO 21258-2:2017	Annually	<10	10	1
Staphylococcus Aureus (cfu/g or ml)	Test Method TP4106 based on BS ISO 21527-2:2008	Annually	<20	20	1
Salmonella (cfu/g or ml)	Test Method TP4120 based on AOAC 993.07 (1993)	Annually	<0	0	25
Yeast (cfu/g or ml)	Test Method TP4112 based on BS ISO 21527-2:2008	Annually	<100	100	1
Moulds (cfu/g or ml)	Test Method TP4112 based on BS ISO 21527-2:2008	Annually	<100	100	1
Aerobic Colony Count (ACC) (cfu/g or ml)	Test Method TP4100 based on BS EN ISO 4833-1:2013	Annually	<100	10000	1
Bacillus Cereus (cfu/g or ml)	Test Method TP4108 based on BS EN ISO 7932:2004+AL:2020	Annually	<20	20	1
Coagulase-positive Staphylococci (cfu/g or ml)	Test Method TP4107 using Kanamycin Agar using pour plate.	Annually	<10	10	1
Coliforms (cfu/g or ml)	Test Method TP4102 based on BS ISO 4832:2006 incubated at 37°C.	Annually	<10	10	1

Analytical Standards

Test	Description	Frequency	Target	Range	Sample (g or ml)
Moisture (%)		Hourly	=2	1.7 to 2.3	12.7

Physical Standards

Test	Description	Frequency	Target	Range	Sample (g or ml)
Weight (g)	Baked Biscuit Weight - 12 shells	Hourly	=57.5	57.0 to 58.0	1

Test	Description	Frequency	Target	Range	Sample (g or ml)
Dimensions Height (mm)	Baked Biscuit Stack Height - 12 shells	Hourly	=73	72 to 74	1
Dimensions Width (mm)	1 shell	Hourly	=36.5	36.0 to 37.0	1
Dimensions Length (mm)	1 shell	Hourly	=46.0	45.5 to 46.5	1

ORGANOLEPTICS

Appearance	Pale golden, embossed "CUSTARD CREAM" shaped biscuit shells with a pale-yellow sandwich filling. No cream flowing over the shells. Writing must be legible. Cream should be a custard colour.
Aroma	Mild vanilla aroma free from any stale, rancid odours, or taints foreign to the product.
Taste	Sweet mild vanilla flavour with no burnt or overfired notes. Free from any taints foreign to the product.
Texture	Crunchy texture crumbles readily on chewing with some tooth packing.

HAZARD CONTROLS

Metal Detection	Yes	Sieving	Yes
------------------------	-----	----------------	-----

CONFIGURATION

Case Configuration	Inner Pack Configuration		
Variable Inner Components in Outer Case	No	Count per Inner Component	12
Total Quantity of Inner Components in Outer Case	15 Units		
Is the Outer Case Splittable?	No		

PRODUCT WEIGHTS

Inner Component	
Variable Weight Consumer Item	Yes
Inner Component Weight	12.7 g
e mark	Yes
Outer Case	
Outer Case Gross Weight	2.45 kg
Outer Case Net Weight	2.25 kg

PRODUCT DIMENSIONS

Inner Component	
Inner Component Depth	225 mm
Inner Component Width	48 mm
Inner Component Height	30 mm
Outer Case	
Outer Case Depth	239 mm
Outer Case Width	158 mm
Outer Case Height	157 mm

PALLET INFORMATION

Quantity of Cases Per Pallet Layer	30 Cases	Pallet Height	1.73 MTR
Quantity of Layers Per Pallet	10 Layers		
Quantity of Cases Per Pallet	300 Cases		

PACKAGING

Inner Component Packaging						
Type	Materials	Weight	Recycled Plastic %	Recyclable	Returnable	Composite
Film	Plastic	2 g	- %			
Outer Case Packaging						
Type	Materials	Weight	Recycled Plastic %	Recyclable	Returnable	Composite
Case	Paper/Cardboard	200 g	- %			

Transport Packaging

Type	Materials	Weight	Recycled Plastic %	Recyclable	Returnable	Composite
Other	Plastic	300 g	- %		Yes	
Other	Wood	28 g	- %		Yes	

OTHER INFORMATION

Commodity Code	1905319100
Meursing Code	7011

Manufacturer Comments

NA

CONTACT INFORMATION

Address

Hill Biscuits
 Tudno Mill
 Smith Street
 Ashton-under-Lyne
 Lancashire
 OL7 0DB
 England

P. (Phone) 0161 330 3617

Complaints Contact

Alison Bowers
 Technical Compliance Coordinator - Systems
 alisonb@hillbiscuits.com

P. (Phone) 0161 330 3617

The information on the [Erudus System](#) has been supplied by the manufacturers of the products and, whilst the owners of the Erudus System take steps to ensure the information is regularly updated, they give no warranty and no guarantee that the information is accurate. Product information and ingredients may change, please always read product labels carefully in addition to using the information provided by Erudus.

We do not accept liability for any inaccuracies or incorrect information contained on this site. Please visit <http://www.erudus.com/terms-and-conditions> for full terms and conditions.