

Changed Mar 13, 2024 15:40

Reviewed Mar 13, 2024 15:40

Erudus ID 086a3cf7cc0d473eaaf11f1f18194251

Version 2.0

RECEIVED
Thomas Ridley QC Dept.
3:53 pm, 13 Mar 2024

The food information supplied by Thomas Ridley Foodservice has been provided by the respective product manufacturer. Whilst we use reasonable endeavours to check this information and ensure its accuracy, we do not give any warranty (whether express or implied), guarantee or representation that it is true, accurate or complete in any respect.

As product information, ingredients, nutritional guides and dietary or allergy advice may change from time to time, we recommend that you always carefully read the product label prior to using or consuming any such products. You should not solely rely upon the information we provide and make your own assessment as to the suitability or otherwise of any given product.



10832

Hill Bourbon Finger Creams (HI20012BF) 200g X 12

Bourbon Finger Creams

PRODUCT DESCRIPTION

Chocolate Flavoured Biscuits with Chocolate Flavoured Filling

Brand	Hill Biscuits
Manufacturer Product Code	HI20012BF
Product Type	Food
Product Category	Other
Storage Type	Ambient
Erudus ID	086a3cf7cc0d473eaaf11f1f18194251
Specification Type	Generic



Inner Component GTIN	5010282011064
Outer Case GTIN	05010282012580



INGREDIENTS

Ingredient Declaration

Fortified WHEAT Flour (WHEAT Flour, Calcium Carbonate, Iron, Nicotinamide, Thiamin), Sugar, Vegetable Oils (Palm, Palm Kernel, Rapeseed in varying proportions), Fat-reduced Alkalised Cocoa Powder, Dextrose, Partially Inverted Refiners Syrup, Raising Agents (Ammonium Hydrogen Carbonate, Sodium Hydrogen Carbonate), Salt, Flavourings.

ALLERGENS

Product Contains:

Celery/Celeryiac	No	Mustard	No
Cereals Containing Gluten	Yes	Nuts (Tree)	No
Barley	No	Almond nuts	No
Oats	No	Brazil nuts	No
Rye	No	Cashew nuts	No
Wheat (including Spelt and Khorasan)	Yes	Hazelnuts	No
Crustacea	No	Macadamia (Queensland) nuts	No
Eggs	No	Pecan nuts	No
Fish	No	Pistachio nuts	No
Lupin	No	Walnuts	No
Milk	May Contain	Peanuts	No
Molluscs	No	Sesame Seeds	No
		Soybeans	May Contain
		Sulphur Dioxide and Sulphites	No

Risk Source:

SUPPLEMENTARY
INGREDIENT
INFORMATION

Palm Oil	Yes
Hydrogenated Vegetable Oil/Fat	No
GM Protein/DNA	No

ADDITIVES

Product Contains:

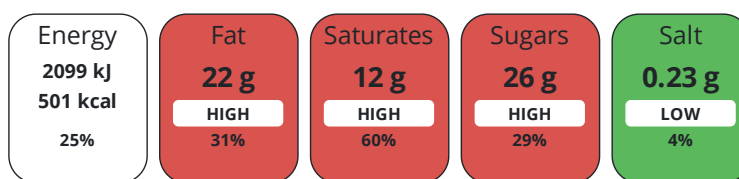
Artificial Antioxidants	No	Artificial Flavourings	No
Artificial Colours	No	Artificial Preservatives	No
Artificial Flavour Enhancers	No	Artificial Sweeteners	No

DIET
SUITABILITY

Vegan Diet	No	Vegetarian Diet	Suitable for
Halal Diet	No	Kosher Diet	No

NUTRITIONAL
INFORMATION

Each 100g/ml portion contains:



of your reference intake.

Typical values per 100g/ml : Energy 501kcal / 2099kj

Nutrient	per 100g	RI per 100g
Energy (kJ)	2099 kJ	25%
Energy (kcal)	501 kcal	25%
Fat	22 g	31%
of which Saturates	12 g	60%
Carbohydrate	68 g	26%
of which Sugars	26 g	29%
Fibre	2.6 g	
Protein	6 g	12%
Salt	0.23 g	4%

SUPPLEMENTARY
NUTRITIONAL
INFORMATION

HANDLING &
STORAGE
INFORMATION

Directions For Use

n/a

Storage Instructions

Product should be stored in cool dry conditions, free from infestation and away from any odoriferous material.

Shelf Life from Time of Production	365 Days	Exempt From Shelf Life Labelling	No
---	----------	---	----

ACCREDITATIONS/
CERTIFICATIONS/
ASSURANCE
SCHEMES



ORIGIN

Product Country of Origin/Place of Provenance	United Kingdom
--	----------------

PRODUCT
CHARACTERISTICS

Standards Testing

Do you undertake trend analysis of microbiological results? Yes **Is shelf life testing undertaken?** Yes

Microbiological Standards

Organism	Description	Frequency	Target	Maximum	Sample (g or ml)
E. Coli (cfu/g or ml)		Annually	<10	10	1
Enterobacteriaceae (cfu/g or ml)		Annually	<10	10	1
Staphylococcus Aureus (cfu/g or ml)		Annually	<20	20	1
Total Viable Count (TVC) (cfu/g or ml)		Annually	<10000	10000	1
Salmonella (cfu/g or ml)		Annually	<0	0	25
Yeast (cfu/g or ml)		Annually	<100	100	1
Moulds (cfu/g or ml)		Annually	<100	100	1

Analytical Standards

Test	Description	Frequency	Target	Range	Sample (g or ml)
Moisture (%)		Hourly	<1.6	1.1 to 2.1	39.5

CONFIGURATION

Case Configuration	12 Units	Inner Pack Configuration	Count per Inner Component	20
Total Quantity of Inner Components in Outer Case				
Is the Outer Case Splittable?	No			

PRODUCT WEIGHTS

Inner Component	
Variable Weight Consumer Item e mark	Yes
	Yes
Outer Case	
Outer Case Gross Weight	2.6 kg
Outer Case Net Weight	2.4 kg

PRODUCT DIMENSIONS

Inner Component	
Inner Component Depth	200 mm
Inner Component Width	65 mm
Inner Component Height	30 mm
Outer Case	
Outer Case Depth	208 mm
Outer Case Width	187 mm
Outer Case Height	133 mm

PALLET INFORMATION

Quantity of Cases Per Pallet Layer	30 Cases	Pallet Height	1.75 MTR
Quantity of Layers Per Pallet	12 Layers		
Quantity of Cases Per Pallet	360 Cases		

PACKAGING

Inner Component Packaging						
Type	Materials	Weight	Recycled Plastic %	Recyclable	Returnable	Composite
Film	Plastic	2 g	- %			

Outer Case Packaging

Type	Materials	Weight	Recycled Plastic %	Recyclable	Returnable	Composite
Case	Paper/Cardboard	200 g	- %			

OTHER
INFORMATION
CONTACT
INFORMATION

Address

Hill Biscuits
Tudno Mill
Smith Street
Ashton-under-Lyne
Lancashire
OL7 0DB
England

P. (Phone) 0161 330 3617

Complaints Contact

Alison Bowers
Technical Compliance Coordinator - Systems
alisonb@hillbiscuits.com

P. (Phone) 0161 330 3617

The information on the [Erudus System](#) has been supplied by the manufacturers of the products and, whilst the owners of the Erudus System take steps to ensure the information is regularly updated, they give no warranty and no guarantee that the information is accurate. Product information and ingredients may change, please always read product labels carefully in addition to using the information provided by Erudus.

We do not accept liability for any inaccuracies or incorrect information contained on this site.
Please visit <http://www.erudus.com/terms-and-conditions> for full terms and conditions.