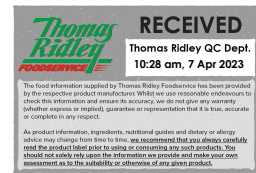


Supplier's Product Code :
Product Added :
Last Updated by Supplier :
erudus id :

2565
04 November 2021
20 January 2022
30596579533c4c499959247bdcf39849



The information on the Erudus System has been supplied by the manufacturers of the products and, whilst the owners of the Erudus System take steps to ensure the information is regularly updated, they give no warranty and no guarantee that the information is accurate. Product information and ingredients may change, please always read product labels carefully in addition to using the information provided by Erudus One.

We do not accept liability for any inaccuracies or incorrect information contained on this site. Please visit <http://www.erudus.com/terms-and-conditions> for full terms and conditions.

Parsley 120g

Product Description:

Dried rubbed leaves of Petroselinum crispum

General Information

Food/Drink :	Food
Product Category :	Ambient
Generic Product Type :	Herbs & Spices

Supplier's Product Code :
2565
Supplier: Greenfields London Ltd
25 Crawford Street
London
W1H 1PL
United Kingdom
P:...

OUTER PRODUCT

Outer case Information

Outer Case GTIN :	05027976040897	Outer Case Length :	400 mm
Packaging Type Description :	Plastic Tub	Outer Case Width :	140 mm
Total Quantity of Inner Units in Outer Case :	3 Units	Outer Case Height :	140 mm
Is Trade Item Splittable? :	Yes	Product Gross Weight :	0.45 kg
		Product Net Weight :	0.36 kg

Pallet Information

Quantity of Cases Per Pallet Layer :	22 Cases	Pallet Height :	1.80 MTR
Quantity of Layers Per Pallet :	12 Layers	Pallet Gross Weight :	120.00 kg
Quantity of Cases Per Pallet :	264 Cases		

Logistical Information

Shelf Life from Time of Production :	500 Days	Minimum Order Quantity :	Not specified.
Guaranteed Shelf Life on Delivery :	250 Days	Delivery Lead Time :	5 Days

Waste Packaging Weight - Outer Case

Glass :	0.00 g	Aluminium :	0.00 g
Plastic :	150.00 g	Steel :	0.00 g
Percentage Recycled Plastic :	Not specified.	Other :	0.00 g
Paper/Board :	20.00 g		

Waste Packaging Weight - Transport Packaging

Plastic :	200.00 g	Wood Total :	Not specified.
Paper/Board :	150.00 g	Is Pallet Returnable? :	-
Percentage Recycled Plastic :	Not specified.		

Other Information

Supplier Comments : Not specified.
--

INNER PRODUCT

Origin Information

Product Country of Origin/Place of Provenance : United Kingdom

Additional Origin Details :
Not specified.

Inner Pack Information

Internal GTIN : 5027906040898

Packaging Type Description : Plastic Tub

Variable Weight Consumer Item : No

Net Drained Weight : 0.120 kg

Inner Unit Length : 120 mm

Inner Unit Height : 140 mm

Inner Unit Width : 140 mm

Inner Product Weight : Not specified.

Inner Product Weight Units : g

Weight/Volume :
120 g e

Handling Information

Directions For Use :
As required

Storage Instructions :
Store in a dry, cool place

Dietary Information

Ingredients :

Parsley (herb)

Product contains:

GM Protein/DNA :	No
Celery/Celeriac (and products thereof) :	No
Lupin (and products thereof) :	No
Eggs (and products thereof) :	No
Fish (and products thereof) :	No
Soybeans (and products thereof) :	No
Milk (and products thereof) :	No
Mustard (and products thereof) :	No
Peanuts (and products thereof) :	No
Sesame Seeds (and products thereof) :	No
Crustacea (and products thereof) :	No
Molluscs (and products thereof) :	No
Nuts (and products thereof) :	No
Almond nuts :	No
Hazelnuts :	No
Walnuts :	No
Cashew nuts :	No
Pecan nuts :	No
Brazil nuts :	No
Pistachio nuts :	No
Macadamia nuts :	No
Queensland nuts :	No
Cereals Containing Gluten :	No
Wheat (and products thereof) :	No
Rye (and products thereof) :	No
Barley (and products thereof) :	No
Oats (and products thereof) :	No
Spelt (and products thereof) :	No
Kamut (and products thereof) :	No
Gluten content <20ppm :	Yes
Hydrogenated Vegetable Oil/Fat :	No
Palm Oil :	No
Sulphur Dioxide and Sulphites :	No
Sulphur Dioxide/Sulphites Concentration :	-

Product contains :

Artificial Antioxidants :	No
Artificial Colours :	No
Artificial Flavourings :	No
Artificial Flavour Enhancers :	No
Artificial Preservatives :	No
Artificial Sweeteners :	No

Product suitability:

Suitable for a Vegetarian Diet :	Yes
Suitable for a Vegan Diet :	Yes
Suitable for Sufferers of Lactose Intolerance :	Yes
Suitable for Coeliacs :	Yes
Approved for a Halal Diet :	Yes
Approved for a Kosher Diet :	Yes
HFSS (High in Fat, Salt and Sugar) :	No

Allergen Statement :

Where products are indicated as not having an allergen present this refers to the product not being formulated or wholly derived from the particular ingredient. Allergen handling policies and procedures are in place through the supply chain to reduce the likelihood of cross contamination from allergens.

Unless otherwise stated in the table above products are supplied, to the best of our knowledge, free from nuts and nut derivatives. Due diligence checks of the supply chain are in place, however due to the nature of the products supplied it is not possible for the company to guarantee that no cross contamination has taken place at some point in the supply chain prior to delivery to our premises.

Nutritional Information

Average Serving :	Not specified.
Count per 100g :	Not specified.
Count Per Pack :	Not specified.
Energy per 100 G/ML :	1,220.00 kJ
Energy per 100 G/ML :	292.00 kcal
Fat per 100 G/ML :	5.48 g
- of which Saturates per 100 G/ML :	<0.1 g
- of which Mono-unsaturates per 100 G/ML :	Not specified.
- of which Polyunsaturates per 100 G/ML :	Not specified.
Trans Fats per 100 G\ML :	Not specified.
Carbohydrate Per 100 G/ML :	50.64 g
- of which Sugars per 100 G/ML :	<0.5 g
- of which Polyols per 100 G/ML :	Not specified.
- of which Starch per 100 G/ML :	Not specified.
Fibre per 100 G/ML :	26.7 g
Protein per 100 G/ML :	26.63 g
Salt per 100 G/ML :	1.13 g
Sodium per 100 G\ML :	0.452 g

Vitamin A per 100g :	Not specified.
Vitamin C per 100g :	Not specified.
Folate/Folic Acid per 100g :	Not specified.
Calcium per 100g :	Not specified.
Iron per 100g :	Not specified.
Zinc per 100g :	Not specified.
Cholesterol per 100 G/ML (UK/FR) :	Not specified.
Non Milk Extrinsic Sugars per 100gm :	Not specified.
Alcoholic Strength %Vol :	Not specified.
Fat Percentage in Dry Matter per 100g :	Not specified.

Waste Packaging Weight - Inner Unit

Glass :	0.00 g
Plastic :	50.00 g
Percentage Recycled Plastic :	Not specified.
Paper/Board :	0.00 g

Aluminium :	0.00 g
Steel :	0.00 g
Other :	0.00 g

Accreditations / Certifications / Assurance Schemes

BRCGS Certified Production :	No
Red Tractor :	No
Fairtrade :	No
Marine Stewardship Council Certified (MSC) :	No
Organic :	No
SALSA (Safe & Local Supplier Approval) :	Yes
British Lion Mark :	No
RSPCA Assured :	No
LEAF Marque (Linking Environment and Farming) :	No
Rainforest Alliance :	No
Food for Life Supplier Scheme :	No
Quality Meat Scotland :	No
Farm Assured Welsh Livestock :	No
Northern Ireland Beef & Lamb Farm Quality Assurance Scheme :	No
Quality Standard Mark (Beef/Lamb) :	No
Roundtable of Sustainable Palm Oil (RSPO) :	No
School Approved (The Requirement for School Food Regulation 2014) :	No
IFS Food Standard :	No
Best Aquaculture Practices (BAP) Certification :	No
ISO 14001 (Environmental System) :	No
FSSC 22000 :	No

Other Accreditation :	
Halal - HFA Kosher - KLBD	
Intra Stat/Taric Code :	Not specified.
Commodity Code :	1211908690
Identification/Health Marks :	Not specified.

Standards Testing

Do you undertake trend analysis of microbiological results?: No

Is shelf life testing undertaken?: Yes

Microbiological Standards

Organism	Frequency	Target	Maximum	Sample (g or ml)	Note
E. Coli (cfu/g or ml)	Every Batch	<10	10	1000g	
Enterobacteriaceae (cfu/g or ml)	Every Batch	<100	100	-	
Moulds (cfu/g or ml)	Every Batch	<500	500	1000g	
Moulds & Yeast (cfu/g or ml)	Every Batch	<500	500	1000g	
Salmonella	Every Batch	<0	0	25g	
Total Viable Count (TVC) (cfu/g or ml)	Every Batch	<50000	50000	-	
Yeast (cfu/g or ml)	Every Batch	<500	500	1000g	

Analytical Standards

Not available.