



Changed Mar 06, 2024 10:06

Reviewed Mar 06, 2024 10:06

Erudus ID 73fc278dee7842a8b536505ccacd06c8

Version 3.0

RECEIVED
Thomas Ridley QC Dept.
11:31 am, 6 Mar 2024



The food information supplied by Thomas Ridley Foodservice has been provided by the respective product manufacturer. Whilst we use reasonable endeavours to check this information and ensure its accuracy, we do not give any warranty (whether express or implied), guarantee or representation that it is true, accurate or complete in any respect.

As product information, ingredients, nutritional guides and dietary or allergy advice may change from time to time, we recommend that you always carefully read the product label prior to using or consuming any such products. You should not solely rely upon the information we provide and make your own assessment as to the suitability or otherwise of any given product.

10945

Premier Chicken Jus 1kg

Chicken Jus 2x1kg

PRODUCT DESCRIPTION

A composite paste, produced by the blending of food ingredients. A dark brown coloured viscous paste, with a distinctive odour of chicken. It has the characteristic appearance and flavour of Chicken Jus when reconstituted with water as directed.

Brand	Essential Cuisine Limited
Manufacturer Product Code	SW00101 - ECPCJ/5
Manufacturer Version	1
Number	
Effective Date	Dec 2, 2022
Product Type	Food
Product Category	Gravy / Bouillon
Storage Type	Ambient
Erudus ID	73fc278dee7842a8b536505ccacd06c8
Specification Type	Generic
Inner Component GTIN	5029540000450
Outer Case GTIN	05029540000467



INGREDIENTS

Ingredient Declaration

Ingredients when reconstituted:

Chicken Stock (Water, Chicken Bone Stock, Chicken Fat, Salt), Modified Tapioca Starch, Glucose Syrup, Yeast Extract, Flavouring, Sugar, Salt, Colour (Caramel), Garlic Powder, Onion Juice Concentrate, Carrot Powder.

ALLERGENS

Product Contains:

Celery/Celeryiac	No	Mustard	No
Cereals Containing Gluten	No	Nuts (Tree)	No
Barley	No	Almond nuts	No
Oats	No	Brazil nuts	No
Rye	No	Cashew nuts	No
Wheat (including Spelt and Khorasan)	No	Hazelnuts	No
Crustacea	No	Macadamia (Queensland) nuts	No
Eggs	No	Pecan nuts	No
Fish	No	Pistachio nuts	No
Lupin	No	Walnuts	No
Milk	No	Peanuts	No
Molluscs	No	Sesame Seeds	No
		Soybeans	No
		Sulphur Dioxide and Sulphites	No

SUPPLEMENTARY INGREDIENT INFORMATION

Palm Oil	No
Hydrogenated Vegetable Oil/Fat	No
GM Protein/DNA	No

ADDITIVES

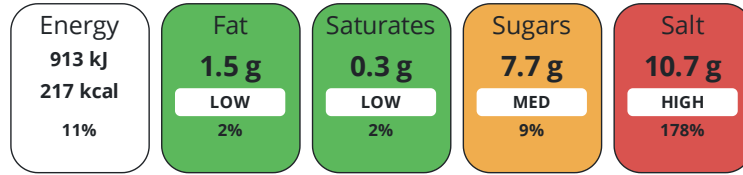
Product Contains:

Artificial Antioxidants	No	Artificial Flavourings	No
Artificial Colours	Yes	Artificial Preservatives	No
Artificial Flavour Enhancers	No	Artificial Sweeteners	No
Vegan Diet	No	Vegetarian Diet	No
Halal Diet	No	Kosher Diet	No

DIET SUITABILITY

NUTRITIONAL INFORMATION

Each 100g/ml portion contains:



of your reference intake.

Typical values per 100g/ml : Energy 217kcal / 913kj

Nutrient	per 100g	RI per 100g
Energy (kJ)	913 kJ	11%
Energy (kcal)	217 kcal	11%
Fat	1.5 g	2%
of which Saturates	0.3 g	2%
Carbohydrate	31.8 g	12%
of which Sugars	7.7 g	9%
Fibre	0.1 g	
Protein	19.2 g	38%
Salt	10.7 g	178%
Sodium	4300 mg	

SUPPLEMENTARY NUTRITIONAL INFORMATION

HFSS (HIGH IN FAT, SALT AND SUGAR)

HFSS Status Not Applicable (out of scope, exempt)

HANDLING & STORAGE INFORMATION

Directions For Use

To make jus, simply whisk or stir 125g (5ozs) of Premier jus concentrate into 1litre (1.75 pints) of warm water in a suitable saucepan. Bring to the boil stirring constantly. Allow to simmer for 2-3 minutes. Your Premier Jus is now ready to use.

Storage Instructions

Always reseal after use and keep in a cool, dry place.

Shelf Life from Time of Production	456 Days	Exempt From Shelf Life Labelling	No
---	----------	---	----

ACCREDITATIONS/ CERTIFICATIONS/ ASSURANCE SCHEMES



Other Accreditation

None

ORIGIN	Product Country of Origin/Place of Provenance		United Kingdom					
PRODUCT CHARACTERISTICS CONFIGURATION	Additional Origin Details							
	N/A							
	Standards Testing			Inner Pack Configuration				
	Case Configuration							
PRODUCT WEIGHTS	Total Quantity of Inner Components in Outer Case		2 Units					
	Is the Outer Case Splittable?		Yes					
	Inner Component							
	Variable Weight Consumer Item		No					
	Inner Component Weight		1 kg					
	e mark		Yes					
	Outer Case							
	Outer Case Gross Weight		2.3 kg					
	Outer Case Net Weight		2 kg					
	PRODUCT DIMENSIONS	Inner Component						
Inner Component Depth		132 mm						
Inner Component Width		132 mm						
Inner Component Height		132 mm						
Outer Case								
Outer Case Depth		265 mm						
Outer Case Width		132 mm						
Outer Case Height		135 mm						
PALLET INFORMATION		Quantity of Cases Per Pallet Layer		35 Cases		Pallet Height		1.3 MTR
		Quantity of Layers Per Pallet		8 Layers		Pallet Gross Weight		678 kg
	Quantity of Cases Per Pallet		280 Cases					
PACKAGING	Inner Component Packaging							
	Type	Materials	Weight	Recycled Plastic %	Recyclable	Returnable	Composite	
	Tub	Plastic	56 g	- %				
	Outer Case Packaging							
	Type	Materials	Weight	Recycled Plastic %	Recyclable	Returnable	Composite	
	Paper/Polyethylene	Plastic	10 g	- %				
	Paper/Polyethylene	Paper/Cardboard	1 g	- %				
	Transport Packaging							
	Type	Materials	Weight	Recycled Plastic %	Recyclable	Returnable	Composite	
	Other	Plastic	500 g	- %				
	Other	Paper/Cardboard	5000 g	- %				
	Other	Wood	30000 g	- %				
	OTHER INFORMATION	Intrastat/Taric Code		2103				
		Manufacturer Comments						
	N/A							

CONTACT
INFORMATION

Address

Essential Cuisine Limited
Essential Cuisine Ltd
Browning Way
Winsford
Cheshire
CW7 2RH
United Kingdom

P. (Phone) 01606 541490

The information on the [Erudus System](#) has been supplied by the manufacturers of the products and, whilst the owners of the Erudus System take steps to ensure the information is regularly updated, they give no warranty and no guarantee that the information is accurate. Product information and ingredients may change, please always read product labels carefully in addition to using the information provided by Erudus.

We do not accept liability for any inaccuracies or incorrect information contained on this site.
Please visit <http://www.erudus.com/terms-and-conditions> for full terms and conditions.