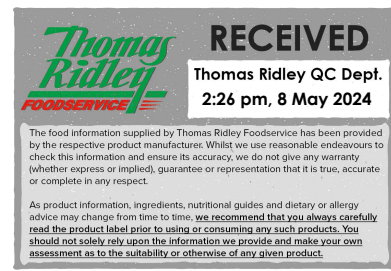


Changed May 07, 2024 15:41  
Reviewed May 07, 2024 15:41  
Erudus ID 40873c546a6944dda076209d8a42c33f  
Version 2.0



11042

# BANANA & WALNUT LOAF (2 x 11 ptn)

Banana & Walnut Loaf 2x660g

## PRODUCT DESCRIPTION

A moist banana and walnut loaf cake with sultanas, topped with demerara sugar and walnut pieces.

<b>Brand</b>	The Handmade Cake Co.
<b>Manufacturer Product Code</b>	074295
<b>Product Type</b>	Food
<b>Product Category</b>	Cakes and Tarts
<b>Storage Type</b>	Frozen
<b>Erudus ID</b>	40873c546a6944dda076209d8a42c33f
<b>Specification Type</b>	Bakery Products



**Outer Case GTIN** 5060044074295



## INGREDIENTS

### Ingredient Declaration

Bananas (29%), Pasteurised Free Range EGG, Sultanas (9%), Rapeseed Oil, WALNUTS (7%), WHEAT Flour (with Calcium Carbonate, Niacin, Iron, Thiamin), Light RYE Flour, Sugar, Dark Brown Sugar [Sugar, Cane Molasses], Demerara Sugar (1.2%) [Sugar, Cane Molasses], Baking Powder [Raising Agents (E575, E500(ii), E336(i)), Maize Starch], Ground Mixed Spice.

## ALLERGENS

Product Contains:

<b>Celery/Celery</b>	No
<b>Cereals Containing Gluten</b>	Yes
<b>Barley</b>	No
<b>Oats</b>	No
<b>Rye</b>	Yes
<b>Wheat (including Spelt and Khorasan)</b>	Yes
<b>Crustacea</b>	No
<b>Eggs</b>	Yes
<b>Fish</b>	No
<b>Lupin</b>	No
<b>Milk</b>	May Contain
<b>Molluscs</b>	No
<b>Mustard</b>	No
<b>Nuts (Tree)</b>	Yes
<b>Almond nuts</b>	May Contain
<b>Brazil nuts</b>	May Contain
<b>Cashew nuts</b>	May Contain
<b>Hazelnuts</b>	May Contain
<b>Macadamia (Queensland) nuts</b>	May Contain
<b>Pecan nuts</b>	May Contain
<b>Pistachio nuts</b>	May Contain
<b>Walnuts</b>	Yes
<b>Peanuts</b>	No
<b>Sesame Seeds</b>	No
<b>Soybeans</b>	No
<b>Sulphur Dioxide and Sulphites</b>	No

Risk Source:

#### Additional Allergen Information

For allergens, including cereals containing gluten, see ingredients in BOLD. This product may contain traces of milk as it has been made in a bakery that uses milk ingredients.

#### SUPPLEMENTARY INGREDIENT INFORMATION

<b>Palm Oil</b>	No
<b>Hydrogenated Vegetable Oil/Fat</b>	No
<b>GM Protein/DNA</b>	No

#### ADDITIVES

Product Contains:

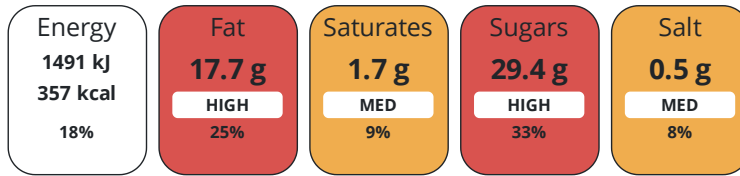
<b>Artificial Antioxidants</b>	No
<b>Artificial Colours</b>	No
<b>Artificial Flavour Enhancers</b>	No
<b>Artificial Flavourings</b>	No
<b>Artificial Preservatives</b>	No
<b>Artificial Sweeteners</b>	No

#### DIET SUITABILITY

<b>Vegan Diet</b>	No	<b>Vegetarian Diet</b>	Suitable for
<b>Halal Diet</b>	No	<b>Kosher Diet</b>	No

#### NUTRITIONAL INFORMATION

Each 100g/ml portion contains:



of your reference intake.

Typical values per 100g/ml : Energy 357kcal / 1491kJ

Nutrient	per 100g	RI per 100g	per 64g serving	RI per 64g serving
Energy (kJ)	1491 kJ	18%	954.2 kJ	11%
Energy (kcal)	357 kcal	18%	228.5 kcal	11%
Fat	17.7 g	25%	11.3 g	16%
of which Saturates	1.7 g	9%	1.1 g	6%
Carbohydrate	42.7 g	16%	27.3 g	11%
of which Sugars	29.4 g	33%	18.8 g	21%
Fibre	2.6 g		1.7 g	
Protein	5.3 g	11%	3.4 g	7%
Salt	0.5 g	8%	0.3 g	5%
Serving Size			64 g	

SUPPLEMENTARY NUTRITIONAL INFORMATION

HFSS (HIGH IN FAT, SALT AND SUGAR)

HFSS Status Yes

HANDLING & STORAGE INFORMATION

Directions For Use

Remove wrapping before defrosting. Defrost at room temperature for 4 hours. Serve at room temperature. Once defrosted store in a cool dry place. Do not refreeze once defrosted. Consume within 4 days.

Storage Instructions

Keep frozen - store at -18°C.

Shelf Life from Time of Production 365 Days

Exempt From Shelf Life Labelling No

ACCREDITATIONS/ CERTIFICATIONS/ ASSURANCE SCHEMES

BRCGS Certified Other Accreditation

ORIGIN

Product Country of Origin/Place of United Kingdom

Provenance

Additional Origin Details

-

PRODUCT CHARACTERISTICS

Standards Testing

Do you undertake trend analysis of microbiological results? Yes

Is shelf life testing undertaken? Yes

Microbiological Standards

Organism	Description	Frequency	Target	Maximum	Sample (g or ml)
Enterobacteriaceae	(cfu/g or ml)	Annually	<100	10000	1

Organism	Description	Frequency	Target	Maximum	Sample (g or ml)
Staphylococcus Aureus (cfu/g or ml)		Annually	<20	10000	1
Salmonella (cfu/g or ml)	Detected/Not detected in 25g	Annually	=0	0	25
Yeast (cfu/g or ml)		Annually	<100	10000	1
Moulds (cfu/g or ml)		Annually	<100	10000	1

Physical Standards

Test	Description	Frequency	Target	Range	Sample (g or ml)
Dimensions Height (mm)		Every Batch	>60	60 to 80	1320
Weight (g)		Every Batch	>1320	1320 to 1760	1320

CONFIGURATION

Case Configuration

<b>Total Quantity of Inner Components in Outer Case</b>	2 Units
<b>Is the Outer Case Splittable?</b>	No
Inner Pack Configuration	
<b>Is Inner Pack Splittable?</b>	No
<b>Quantity of Inner Components in Inner Pack</b>	1

PRODUCT WEIGHTS

Inner Component

<b>Variable Weight Consumer Item</b>	No
<b>Inner Component Weight</b>	660 g
Outer Case	
<b>Outer Case Gross Weight</b>	1.42 kg
<b>Outer Case Net Weight</b>	1.32 kg

PRODUCT DIMENSIONS

Inner Component

<b>Inner Component Depth</b>	215 mm
<b>Inner Component Width</b>	107 mm
<b>Inner Component Height</b>	67 mm

Outer Case

<b>Outer Case Depth</b>	218 mm
<b>Outer Case Width</b>	218 mm
<b>Outer Case Height</b>	96 mm

PALLET INFORMATION

<b>Quantity of Cases Per Pallet Layer</b>	20 Cases
<b>Quantity of Layers Per Pallet</b>	12 Layers
<b>Quantity of Cases Per Pallet</b>	240 Cases
<b>Pallet Height</b>	1.3 MTR

PACKAGING

Inner Component Packaging

Type	Materials	Weight	Recycled Plastic %	Recyclable	Returnable	Composite
Film	Plastic	8 g	- %			

Outer Case Packaging

Type	Materials	Weight	Recycled Plastic %	Recyclable	Returnable	Composite
Case	Paper/Cardboard	94 g	- %			

Transport Packaging

Type	Materials	Weight	Recycled Plastic %	Recyclable	Returnable	Composite
Other	Plastic	1.25 g	- %			
Other	Paper/Cardboard	1.25 g	- %			
Other	Wood	104.2 g	- %			

OTHER INFORMATION

<b>Intrastat/Taric Code</b>	1905907000
<b>Commodity Code</b>	19059070
<b>Identification/Health Marks</b>	Not applicable

**Manufacturer Comments**

Transit packaging weights are given per case based on a full pallet load.

CONTACT INFORMATION

Address

The Handmade Cake Co.  
 The Bakery  
 Gardner Road  
 Maidenhead  
 Berkshire  
 SL6 7TU  
 United Kingdom

P: (Phone) 01628 770908

Technical Contact

Technical Team  
 Maidenhead.Technical@mdesserts.com

P: (Phone) 01628 770908 Ext. 1052

Complaints Contact

Technical Team  
 Maidenhead.Technical@mdesserts.com

P: (Phone) 01628 770908 Ext. 1052

The information on the [Erudus System](#) has been supplied by the manufacturers of the products and, whilst the owners of the Erudus System take steps to ensure the information is regularly updated, they give no warranty and no guarantee that the information is accurate. Product information and ingredients may change, please always read product labels carefully in addition to using the information provided by Erudus.

We do not accept liability for any inaccuracies or incorrect information contained on this site.  
 Please visit <http://www.erudus.com/terms-and-conditions> for full terms and conditions.