

NielsenIQ Brandbank

Cadbury Starbar Chocolate Bar 49g



EAN
 5034660522775

Target market(s)
 GB, IE

Components

Ingredients

Milk

Peanuts

Glucose Syrup

Sugar

Vegetable Fats (Palm, Shea)

Whey Powder (from **Milk**)

Cocoa Butter

Cocoa Mass

Skimmed **Milk** Powder

Humectant (Glycerol)

Rice Flour

Wheat Flour (with added Calcium, Iron, Niacin, Thiamin)

Emulsifiers (E442, E471, E476)

Salt

Flavourings

Raising Agent (Sodium Carbonates)

Barley Malt Syrup

Barley Malt Extract

Milk Chocolate: Milk Solids 14 % minimum

Contains Vegetable Fats in addition to Cocoa Butter

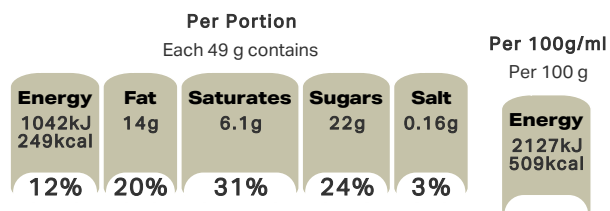
Nutrition

	Per 100 g:	Per Bar (49 g):
Energy	2127 kJ (509 kcal)	1042 kJ (249 kcal)
Fat	28 g	14 g
of which Saturates	12 g	6.1 g
Carbohydrate	54 g	26 g
of which Sugars	44 g	22 g
Fibre	2.7 g	1.3 g
Protein	10 g	4.9 g
Salt	0.34 g	0.16 g

Calculated Nutrition

	per 100g	Per Bar (49 g):
Energy (kJ)	2127	1042
Energy (kcal)	509	249
Fat (g)	28	14
of which saturates (g)	12	6.1
Carbohydrate (g)	54	26
of which sugars (g)	44	22
Fibre (g)	2.7	1.3
Protein (g)	10	4.9
Salt (g)	0.34	0.16

Front of Pack Nutrition



% reference intake of an average adult (8400 kJ / 2000 kcal)

Reference Intake Statement

Reference Intake Statement - % reference intake of an average adult (8400 kJ / 2000 kcal)

Product Description

Brand

Cadbury

Features

Suitable for vegetarians

Standardised Brand

Brand - Cadbury

Regulated Product Name

Milk chocolate with caramel (30 %) and peanut (23 %) centre.

Marketing

Company Name

Mondelez UK / Mondelez Ireland

Company Address

Mondelez UK,
PO Box 7008,
Birmingham,
B30 2PT.

Mondelez Ireland,
Malahide Road,
Coolock,
Dublin 5.

Third Party Logos

- Green Dot

Manufacturer Marketing

By Appointment to H.M. The Queen Cocoa and Chocolate Manufacturers Cadbury UK Ltd., Bournville.

Other Information

Made under licence from Cadbury UK Ltd.

Further Description

BeTreatwise.net

Get to know your treats

1 bar = 12 % of the RI* of kcal

*% reference intake of an average adult (8400 kJ / 2000 kcal)

Cocoa Life

Partnering with Fairtrade Foundation

www.cocoalife.org

Health & Lifestyle

Lifestyle

- Suitable for Vegetarians

Allergy Advice

Barley - Contains

Milk - Contains

Peanuts - Contains

Wheat - Contains

Storage & Usage

Storage Type

Type
Ambient

Storage

Store in a dry place. Protect from heat.

Brandbank Captured Pack Data

Pack Size

0.11lbs e

Numeric Size

Numeric Size - 0.11

Pack Type

Type - Wrap

Usage Count

Number of uses - Servings

1

Usage Other Text

1x bar = 1 Portion. 1 portion per pack

Customer Services

Manufacturers Address

Mondelez UK,
PO Box 7008,
Birmingham,
B30 2PT.

Mondelez Ireland,
Malahide Road,
Coolock,
Dublin 5.

Return To

We are passionate about our great quality Cadbury products. Not completely satisfied? Please contact us:
Freephone 0800 818181 (UK only).

Mondelez UK,
PO Box 7008,
Birmingham,
B30 2PT.

Mondelez Ireland,
Freephone 1-800 678708
Malahide Road,
Coolock,
Dublin 5.
www.cadbury.co.uk

Telephone Helpline

0800 818181 (UK)
1-800 678708

Web Address

www.cadbury.co.uk

