

## Rowntree's Berry Hearts 115g



EAN  
8593893786059

Target market(s)  
GB, IE

## Components

### Ingredients

Glucose Syrup  
Sugar  
Corn Fibre  
Gelatine  
Apple Juice From Concentrate (5.5%)  
Acids (Malic Acid, Tartaric Acid, Citric Acid)  
Vegetable Concentrates (Black Carrot, Carrot, Hibiscus)  
Vegetable Fats (Palm, Sunflower, Coconut, Rapeseed)  
Acidity Regulator (Sodium Ascorbate)  
Natural Flavourings  
Glazing Agent (Carnauba Wax)  
Colour (Beta-Carotene)  
Maltodextrin

### Nutrition

	Per 100g	Per 4 sweets	Reference Intake*	%RI*
Energy	1296kJ	222kJ	8400kJ	
	300kcal	52kcal	2000kcal	3%
Fat	0.1g	Trace	70g	<1%
of which: saturates	0.1g	Trace	20g	<1%
Carbohydrate	63.0g	11.0g	260g	4%
of which: sugars	35.6g	6.2g	90g	7%
Fibre	13.7g	2.4g	-	-
Protein	5.0g	0.9g	50g	2%
Salt	0.06g	0.01g	6g	<1%

\*Reference Intake of an average adult (8400kJ/2000kcal)

Contains approximately 6 servings

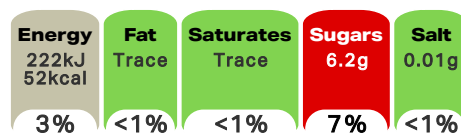
Portions should be adjusted for children of different ages

### Calculated Nutrition

	per 100g	Per 4 sweets
Energy (kJ)	1296	222
Energy (kcal)	300	52
Fat (g)	0.1	Trace
of which saturates (g)	0.1	Trace
Carbohydrate (g)	63	11
of which sugars (g)	35.6	6.2
Fibre (g)	13.7	2.4
Protein (g)	5	0.9
Salt (g)	0.06	0.01

### Front of Pack Nutrition

Per Portion  
Each 4 sweets contain



of an adult's Reference Intake (RI)\*

Energy per 100g: 1296kJ/300kcal

\*Reference Intake of an average adult (8400kJ/2000kcal)

### Nutrition Other Text

Reference Intake of an average adult (8400kJ/2000kcal)

Contains approximately 6 servings. Portions should be adjusted for children of different ages

### Reference Intake Statement

Reference Intake Statement - Reference Intake of an average adult (8400kJ/2000kcal)

## Product Description

### Alternative Description

Supplier Preferred Product Name - Rowntree's Berry Hearts Sweets Sharing Bag 115g

### Brand

Rowntree's

### Features

A sharing bag of fruity flavoured jelly heart sweets made with fruit juice  
Strawberry, blackcurrant & raspberry flavours  
No artificial colours, flavours or preservatives

### Standardised Brand

Brand - Rowntree's

### Regulated Product Name

Assorted fruit flavoured jellies

## Marketing

### Company Name

Nestlé Ireland

### Company Address

PO Box 203,  
York,  
YO91 1XY.

Nestlé Ireland,  
3030 Lake Drive,  
Citywest Business Campus,  
Dublin 24.

### Product Marketing

- Rowntree's® Berry Hearts sweets are lovely little fruity-flavoured jelly hearts in three tasty flavours. Made with real fruit juice, enjoy the taste of strawberry, raspberry and blackcurrant in every colourful sweet.
- Did you know that we don't use artificial colours, flavours or preservatives in Rowntree's® sweets? It's even more reason to enjoy the different flavours, textures, shapes, and colours in every bag.
- These brilliantly juicy sweets are brought to you by Rowntree's®, the makers of the classic Fruit Pastille. The story begins in 1862, when Henry Rowntree bought a cocoa works in York and transformed it into a confectionery company.

### Brand Marketing

Have you tried Rowntree's® Randoms®? They're deliciously fruity gummy sweets in millions of potential random combinations!

### Other Information

® Reg. Trademark of Société des Produits Nestlé S.A.  
Nutritional Compass ®

### Further Description

Visit us at [www.rowntrees.co.uk](http://www.rowntrees.co.uk), [www.facebook.com/rowntrees](http://www.facebook.com/rowntrees) or [www.twitter.com/rowntrees](http://www.twitter.com/rowntrees).

## Health & Lifestyle

### Additives

Artificial Colours - Free From  
Artificial Flavours - Free From  
Artificial Preservatives - Free From

## Storage & Usage

### Storage Type

#### Type

Ambient

### Preparation and Usage

Love to Share  
...With others  
...With a movie  
...As a treat

Know Your Servings  
4 sweets = 1 serving

### Storage

Store cool and dry

### Date Marking Type

- Best Before

### Lower Age Limit

Advisory - Years

4

## Brandbank Captured Pack Data

### Pack Size

115g e

### Numeric Size

Numeric Size - 115

### Pack Type

Type - Pouch

### Recycling Scheme

- OPRL

### Recycling Other Text

Recycle at Store - Don't recycle at home

### Usage Count

Number of uses - Servings

6

### Usage Other Text

Contains approximately 6 servings

## Customer Services

### Manufacturers Address

PO Box 203,  
York,  
YO91 1XY.

Nestlé Ireland,  
3030 Lake Drive,  
Citywest Business Campus,  
Dublin 24.

### Return To

Contact us Free  
www.nestle.co.uk  
UK: 0800 604 604  
PO Box 203,  
York,  
YO91 1XY.

ROI: 00800 6378 5385  
Nestlé Ireland,  
3030 Lake Drive,  
Citywest Business Campus,  
Dublin 24.

### Telephone Helpline

UK: 0800 604 604  
ROI: 00800 6378 5385

### Web Address

www.nestle.co.uk

### Social Media

Facebook, Twitter, Instagram /rowntrees

## Extended Data

### Safety Warning

IMPORTANT: YOUNG CHILDREN (LESS THAN 4 YEARS) HAVE LIMITED CHEWING ABILITY AND COULD CHOKE ON SMALL SWEETS.

### Description Breakdown

Functional Name - Berry Hearts



