

## Rowntree's Safari Mix 115g



**EAN**  
8593893786035

**Target market(s)**  
GB, IE

## Components

### Ingredients

Glucose Syrup  
Sugar  
Corn Fibre  
Gelatine  
Apple Juice from Concentrate (5.5%)  
Acids (Citric Acid, Tartaric Acid, Malic Acid, Acetic Acid), Colour (Beta-Carotene), Vegetable Fats (Palm, Sunflower, Coconut, Rapeseed)  
Vegetable Concentrates (Black Carrot, Safflower, Radish)  
Acidity Regulators (Sodium Ascorbate, Trisodium Citrate)  
Natural Flavourings  
Glazing Agent (Carnauba Wax)  
Spirulina Concentrate  
Modified Starch  
Colours (Chlorophylls and Chlorophyllins)

### Nutrition

	Per 100g	Per 5 sweets	Reference Intake*	%RI*
Energy	1296kJ	222kJ	8400kJ	
	300kcal	52kcal	2000kcal	3%
Fat	0.1g	Trace	70g	<1%
of which saturates	0.1g	Trace	20g	<1%
Carbohydrate	63.0g	11.0g	260g	4%
of which sugars	35.6g	6.2g	90g	7%
Fibre	13.7g	2.4g	-	-
Protein	5.0g	0.9g	50g	2%
Salt	0.06g	0.01g	6g	<1%

\*Reference Intake of an average adult (8400kJ/2000kcal)

Contains approximately 6 servings

Portions should be adjusted for children of different ages

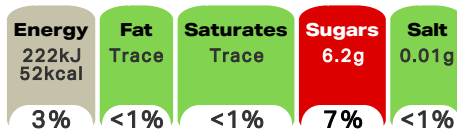
### Calculated Nutrition

	per 100g	Per 5 sweets
Energy (kJ)	1296	222
Energy (kcal)	300	52
Fat (g)	0.1	Trace
of which saturates (g)	0.1	Trace
Carbohydrate (g)	63	11
of which sugars (g)	35.6	6.2
Fibre (g)	13.7	2.4
Protein (g)	5	0.9
Salt (g)	0.06	0.01

### Front of Pack Nutrition

#### Per Portion

Each 5 sweets contain



of an adult's Reference Intake (RI)\*

Energy per 100g: 1296kJ/300kcal

\*Reference Intake of an average adult (8400kJ/2000kcal)

### Nutrition Other Text

Reference Intake of an average adult (8400kJ/2000kcal)  
Contains approximately 6 servings  
Portions should be adjusted for children of different ages

### Reference Intake Statement

Reference Intake Statement - Reference Intake of an average adult (8400kJ/2000kcal)

## Product Description

### Alternative Description

Supplier Preferred Product Name - Rowntree's Safari Mix Sweets Sharing Bag 115g

### Brand

Rowntree's

### Features

A sharing bag of fruity flavoured jelly animal sweets made with fruit juice  
Strawberry, orange, lemon and apple flavours  
No artificial colours, flavours or preservatives

### Standardised Brand

Brand - Rowntree's

### Regulated Product Name

Assorted fruit flavoured jellies

## Marketing

### Company Name

Nestlé Ireland

### Company Address

PO Box 203,  
York,  
YO91 1XY.

Nestlé Ireland,  
3030 Lake Drive,  
Citywest Business Campus,  
Dublin 24.

### Product Marketing

- Rowntree's® Safari Mix sweets are lovely little fruity-flavoured jelly sweets in four tasty flavours. Made with real fruit juice, enjoy the taste of strawberry, orange, lemon and apple in every colourful sweet.
- Did you know that we don't use artificial colours, flavours or preservatives in Rowntree's® sweets? It's even more reason to enjoy the different flavours, textures, shapes, and colours in every bag.
- These brilliantly juicy sweets are brought to you by Rowntree's®, the makers of the classic Fruit Pastille. The story begins in 1862, when Henry Rowntree bought a cocoa works in York and transformed it into a confectionery company.

### Brand Marketing

Have you tried Rowntree's® Randoms®? They're deliciously fruity gummy sweets in millions of potential random combinations!

### Other Information

®Reg. Trade Mark of Société des Produits Nestlé S.A.  
Nutritional Compass®  
Used under licence by Froneri International Ltd.

### Further Description

Visit us at [www.rowntrees.co.uk](http://www.rowntrees.co.uk), [www.facebook.com/rowntrees](http://www.facebook.com/rowntrees) or [www.twitter.com/rowntrees](http://www.twitter.com/rowntrees)

## Health & Lifestyle

### Additives

Artificial Colours - Free From  
Artificial Flavours - Free From  
Artificial Preservatives - Free From

## Storage & Usage

### Storage Type

#### Type

Ambient

### Preparation and Usage

Love to Share  
...With a movie  
...As a treat  
...With others

Know Your Servings  
5 Sweets = 1 Serving

### Storage

Store cool and dry  
For best before end see base.

### Date Marking Type

- Best Before

## Brandbank Captured Pack Data

### Pack Size

115g e

### Numeric Size

Numeric Size - 115

### Pack Type

Type - Pouch

### Recycling Other Text

Recycle at Store - Don't recycle at home

## Customer Services

### Manufacturers Address

PO Box 203,  
York,  
Y091 1XY.

Nestlé Ireland,  
3030 Lake Drive,  
Citywest Business Campus,  
Dublin 24.

### Return To

Contact us free  
[www.nestle.co.uk](http://www.nestle.co.uk)  
UK: 0800 604 604,  
PO Box 203,  
York,  
Y091 1XY.

ROI: 00800 6378 5385,  
Nestlé Ireland,  
3030 Lake Drive,  
Citywest Business Campus,  
Dublin 24.

### Telephone Helpline

UK: 0800 604 604  
ROI: 00800 6378 5385

### Web Address

[www.nestle.co.uk](http://www.nestle.co.uk)

### Social Media

Facebook, Twitter, Instagram /rowntrees

## Extended Data

### Safety Warning

IMPORTANT: YOUNG CHILDREN (LESS THAN 4 YEARS) HAVE LIMITED CHEWING ABILITY AND COULD CHOKE ON SMALL SWEETS.

### Description Breakdown

Variant - Safari Mix

