

Schweppes Original Lemonade 1.5L



EAN
5000193300968

Target market(s)
GB

Components

Ingredients

Carbonated Water
Sugar
Lemon Juice from Concentrate (2%)
Citric Acid
Flavourings
Acidity Regulator (Sodium Citrate)
Sweeteners (Aspartame, Sodium Saccharin)
Preservative (Potassium Sorbate)
Antioxidant (Ascorbic Acid)

Nutrition

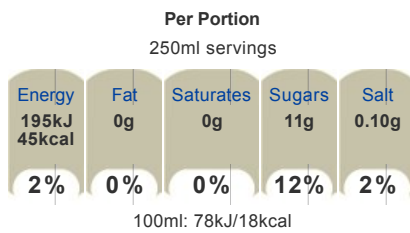
	Per: 100ml	Per: 250ml (%*)
Energy:	78kJ/ 18kcal	195kJ/ 45kcal (2%)
Fat:	0g	0g (0%)
of which saturates:	0g	0g (0%)
Carbohydrate:	4.2g	11g (4%)
of which sugars:	4.2g	11g (12%)
Protein:	0g	0g (0%)
Salt:	0.04g	0.10g (2%)

*Reference intake of an average adult (8400kJ/2000kcal)
1.5L = 6 x 250ml servings

Calculated Nutrition

	per 100ml	Per: 250ml
Energy (kJ)	78	195
Energy (kcal)	18	45
Fat (g)	0	0
of which saturates (g)	0	0
Carbohydrate (g)	4.2	11
of which sugars (g)	4.2	11
Protein (g)	0	0
Salt (g)	0.04	0.1

Front of Pack Nutrition



Reference intake of an average adult (8400kJ/2000kcal)

Product Description

Brand

Schweppes

Features

Masterfully made with lemon juice

Standardised Brand

Brand - Schweppes

Regulated Product Name

Sparkling Lemon Flavour Soft Drink with Sugar and Sweeteners

Marketing

Company Name

Coca-Cola Enterprises Ltd.

Company Address

Uxbridge,
UB8 1EZ.

Product Marketing

'Original Diet Lemonade masterfully made with Lemon Juice'

Made with real lemons
With Sugar and Sweeteners

Serve cold for maximum refreshment.

Store in a cool and dry place

Please recycle.

Brand Marketing

Coca-Cola and the Environment

Coca-Cola is committed to making a positive difference - to the health of the planet, consumers and the communities it serves. The company is working hard to reduce its impact on the environment in everything it does - growing more while using less in areas such as energy and water use, waste reduction and recycling - and by encouraging people to think more about the positive impact they can have on their local environment.

Manufacturer Marketing

By Appointment to Her Majesty Queen Elizabeth II Schweppes Holdings Ltd Manufacturers of Schweppes and Roses Soft Drinks

Other Information

Contains a Source of Phenylalanine.

Trademark Information

© 2013 Atlantic Industries

Storage & Usage

Storage Type

Type

Ambient

Storage

Store cool and dry.

Best before end: See side of cap or bottle neck for date.

Brandbank Captured Pack Data

Pack Size

1.5L e

Numeric Size

Numeric Size - 1.5

Recycling Info

Box - Plastic - Widely Recycled

Pack Type

Type - Plastic Bottle

Recycling Scheme

- OPRL

Usage Count

Number of uses - Servings

6

Usage Other Text

1.5L = 6 x 250ml servings

Customer Services

Manufacturers Address

Coca-Cola Enterprises Ltd.,
Uxbridge,
UB8 1EZ.

Return To

Coca-Cola Enterprises Ltd.,
Uxbridge,
UB8 1EZ.
0800 227711
Coca-Cola.co.uk

Telephone Helpline

0800 227711

Web Address

Coca-Cola.co.uk

Extended Data

Languages On Pack

- English

Description Breakdown

Functional Name - Lemonade
Variant - Original



**Sparkling Lemon Flavour Soft Drink
with Sugar and Sweeteners**

INGREDIENTS

Carbonated Water, Sugar, Lemon Juice from Concentrate (2%), Citric Acid, Flavourings, Acidity Regulator (Sodium Citrate), Sweeteners (Aspartame, Sodium Saccharin), Preservative (Potassium Sorbate), Antioxidant (Ascorbic Acid).

WARNING STATEMENT

Contains a Source of Phenylalanine.



NUTRITION INFORMATION TYPICAL VALUES

Per:	100ml	250ml	(%*)
Energy:	78kJ 18kcal	195kJ 45kcal	(2%)
Fat:	0g	0g	(0%)
of which saturates:	0g	0g	(0%)
Carbohydrate:	4.2g	11g	(4%)
of which sugars:	4.2g	11g	(12%)
Protein:	0g	0g	(0%)
Salt:	0.04g	0.10g	(2%)

* Reference intake of an average adult (8400kJ/2000kcal)

250ml

Energy 195kJ 45kcal	Fat 0g	Saturates 0g	Sugars 11g	Salt 0.10g
2%	0%	0%	12%	2%

100ml: 78kJ/18kcal