

Changed Feb 15, 2024 00:00

Reviewed Feb 14, 2024 16:05

Erudus ID a07df11bd46143f8a99f7db5483f2c8b

Version 3.0

**Thomas Ridley**  
FOODSERVICE

**RECEIVED**  
Thomas Ridley QC Dept.  
2:47 pm, 15 Feb 2024

The food information supplied by Thomas Ridley Foodservice has been provided by the respective product manufacturers. Whilst we use reasonable endeavours to check this information and ensure its accuracy, we do not give any warranty (whether express or implied), guarantee or representation that it is true, accurate or complete in any respect.

As product information, ingredients, nutritional guides and dietary or allergy advice may change from time to time, we recommend that you always carefully read the product label prior to using or consuming any such products. You should not solely rely upon the information we provide and make your own assessment as to the suitability or otherwise of any given product.



# FB Mini Cake Assortment (40 units per box)

Mini Cake Assortment

## PRODUCT DESCRIPTION

5 x Mini Chocolate Éclairs, 5 x Mini Finger Doughnuts, 5 x Mini Fruit Scones, 5 x Mini Black Forest Muffins, 5 x Mini Carrot Cake, 5 x Mini Chocolate Brownie, 5 x Mini Custard Slices, 5 x Mini Cheesecake Slices

<b>Brand</b>	Wrights Food Group
<b>Manufacturer Product Code</b>	2738
<b>Effective Date</b>	Feb 14, 2024
<b>Product Type</b>	Food
<b>Product Category</b>	Desserts
<b>Storage Type</b>	Frozen
<b>Erudus ID</b>	a07df11bd46143f8a99f7db5483f2c8b
<b>Specification Type</b>	Bakery Products



Outer Case GTIN 05018833027380



**Ingredient Declaration**

Mini Chocolate Éclair: Whipping Cream (**MILK**) (47%), **EGG**, Chocolate Fondant (16%) (Sugar, Chocolate (Cocoa Mass, Sugar, Cocoa Butter, Emulsifier (**SOYA** Lecithin)), Glucose Syrup, Water, Emulsifier (Mono- and Diglycerides of Fatty Acids), Preservative (Potassium Sorbate)), Choux Concentrate (15%) (Fortified Wheat Flour (**WHEAT** Flour, Calcium carbonate, Iron, Niacin, Thiamin), Rapeseed Oil, Corn Flour, Emulsifier (Citric Acid Esters of Mono- and Diglycerides), Raising Agent (Tetrasodium diphosphate), Salt), Dark Chocolate Flavour Coating (Sugar, Vegetable Oil (Palm, Palm Kernel), Fat Reduced Cocoa Powder, Fortified Wheat Flour (**WHEAT** Flour, Calcium carbonate, Niacin, Iron, Thiamin), Whey Powder (**MILK**), Emulsifiers (**SOYA** Lecithin, Polyglycerol polyricinoleate), Natural Flavouring), Sugar, Rapeseed Oil, Stabilisers (Diphosphates, Sodium Alginate).

Mini Finger Doughnut: Fortified Wheat Flour (**WHEAT** Flour, Calcium carbonate, Iron, Niacin, Thiamin), Whipping Cream (**MILK**) (30%), Strawberry Sauce (8%) (Sugar, Strawberry Puree, Glucose Syrup, Water, Gelling Agent (Pectin), Colour (Anthocyanin), Acidity Regulators (Citric Acid, Trisodium Citrate), Flavouring), Water, Palm Oil, Sugar, Sweet Dusting (Dextrose, Sugar, Cornflour, Palm Oil), **EGG**, Vegetable Shortening (Palm Oil, Rapeseed Oil), Yeast, Improver (**WHEAT** Flour, Water, Emulsifiers (E472e, E471), Flour Treatment Agent (E300), Rapeseed Oil), Salt, Preservative (Calcium Propionate), Raising Agents (Diphosphates, Sodium Bicarbonate), Stabilisers (Diphosphates, Sodium Alginate), Natural Vanilla Flavouring.

Mini Carrot Cake: Carrot Cake Mix (47%) (Sugar, Fortified Wheat Flour (**WHEAT** Flour, Calcium carbonate, Niacin, Iron, Thiamin), Whole **EGG** Powder, Palm Fat, Rapeseed Oil, Raising Agents (Diphosphates, Sodium carbonates), **WHEAT** Gluten, Modified Corn Starch, Emulsifiers (Sodium stearoyl-2-lactylate, Mono- and Diglycerides of fatty acids), Herbs and Spices (Cinnamon, Coriander, Caraway, Fennel, Ginger, Clove, Nutmeg, Turmeric), Salt, Flavouring, Caramelised Sugar, Maltodextrin, Colour (Annatto norbixin)), Cream Cheese Style Topping (30%) (Sugar, Margarine (Palm Fat, Vegetable Oils (Rapeseed, Sunflower), Water, Salt, Emulsifier (Polyglycerol esters of fatty acids), Flavouring, Colours (Curcumin, Annatto norbixin)), Water, Skimmed **MILK** Powder, Modified Starch, Glucose Syrup, Cream Powder (**MILK**), Cheese Powder (**MILK**), Flavouring (contains **BARLEY**, **MILK** and Caffeine), **EGG** White Powder, Acids (Lactic Acid, Acetic Acid), Corn Flour, Emulsifier (Polysorbate 60), Preservative (Potassium sorbate), Emulsifying Salts (Sodium phosphates), Salt, Thickener (Xanthan gum), Colour (Annatto norbixin)), Carrot (14%), Rapeseed Oil, Water.

Mini Fruit Scones: Fortified Wheat Flour (**WHEAT** Flour, Calcium carbonate, Iron, Niacin, Thiamin), Whipping Cream (**MILK**) (20%), Whole **MILK**, Rehydrated Sultanas (8%) (Sultanas, Water), Unsalted Butter (**MILK**), Sugar, Raspberry Jam (4%) (Glucose Syrup, Seedless Raspberry Puree, Gelling Agent (Pectin), Acidity Regulators (Citric Acid, Sodium Citrates), Colour (Anthocyanins), Natural Flavouring), **EGG**, Sweet Dusting (Dextrose, Sugar, Cornflour, Palm Oil), Raising Agents (Diphosphates, Sodium Bicarbonate), Stabilisers (Diphosphates, Sodium Alginate).

Mini Black Forest Muffin: Chocolate Mud Cake Mix (41%) (Sugar, Fortified Wheat Flour (**WHEAT** Flour, Calcium Carbonate, Iron, Niacin, Thiamin), Fat-reduced Cocoa Powder, Modified Maize Starch, Emulsifiers (Sodium Stearoyl Lactylate, Polyglycerol esters of fatty acids, Mono- and diglycerides of fatty acids, Polysorbate 80), Raising Agents (Disodium Diphosphate, Sodium Bicarbonate), Salt, **WHEAT** Gluten, Natural Flavouring), Whipping Cream (**MILK**) (22%), **EGG**, Rapeseed Oil, Red Cherry Filling (5%) (Cherries, Water, Sugar, Modified Starch, Acidity Regulator (Citric acid), Natural Flavouring, Preservative (Potassium sorbate)), Icing (Sugar, Glucose Syrup, Palm Fat, Water, Rapeseed Oil, Skimmed **MILK** Powder, Emulsifier (Mono- and diglycerides of fatty acids), Natural Flavouring, Acid (Acetic acid)), Dark Chocolate Flavour Coating (Sugar, Vegetable Oil (Palm, Palm Kernel), Fat Reduced Cocoa Powder, Fortified Wheat Flour (**WHEAT** Flour, Calcium carbonate, Niacin, Iron, Thiamin), Whey Powder (**MILK**), Emulsifiers (**SOYA** Lecithin, Polyglycerol polyricinoleate), Natural Flavouring), Sugar, Stabilisers (Diphosphates, Sodium Alginate).

Mini Custard Slice: Water, Fondant Icing (19%) (Sugar, Water, Glucose Syrup, Sorbitol), Custard (18%) (Sugar, Whole **MILK** Powder, Modified Potato Starch, Gelling Agents (Sodium phosphates, Diphosphates, Calcium sulphate), Thickener (Sodium alginate), Preservative (Calcium propionate), Flavouring, Colours (Carotenes, Paprika oleoresin)), Fortified Wheat Flour (**WHEAT** Flour, Calcium carbonate, Niacin, Iron, Thiamin), Margarine (Palm Oil, Palm Stearin, Water, Salt, Rapeseed Oil, Emulsifier (Mono- and diglycerides of fatty acids), Lemon Juice, Acidity Regulator (Citric Acid)), Sugar, Salt.

Mini Chocolate Brownies: Fortified Wheat Flour (**WHEAT** Flour, Calcium carbonate, Niacin, Iron, Thiamin), Raising Agents (Diphosphates, Sodium Carbonates)), Rapeseed Oil, Partially Inverted Refiners Syrup, Sugar, **EGG**, Chocolate (10%) (Cocoa Mass, Sugar, Cocoa Butter, Fat-Reduced Cocoa Powder, Emulsifier (**SOYA** Lecithin), Natural Vanilla Flavouring), Unsalted Butter (**MILK**), Fat-Reduced Cocoa Powder (Cocoa Powder, Acidity Regulator (Potassium carbonate)), Whole **MILK**, Raising Agent (Sodium bicarbonate).

Mini American Style Cheesecakes: Full Fat Soft Cheese (**MILK**) (36%), Biscuit Crumb (18%) (Fortified Wheat Flour (**WHEAT** Flour, Calcium Carbonate, Iron, Thiamin, Niacin), Sugar, Palm Oil, Invert Sugar Syrup, Rapeseed Oil, Raising Agent (Sodium Bicarbonate), Salt), Sugar, Whipping Cream (**MILK**), **EGG**, Apricot Jam (3%) (Glucose Syrup, Apricot Puree, Sugar, Gelling Agent (Pectin), Acidity Regulators (Citric acid, Trisodium citrate), Natural Flavour, Colour (Carotenes), Preservative (Potassium sorbate)), Unsalted Butter (**MILK**), Vegetable Shortening (Palm Oil, Rapeseed Oil), Apricot Glaze (1.5%) (Water, Sugar, Glucose Syrup, Gelling Agent (Pectin), Acidity Regulators (Citric acid, Calcium lactate, Sodium diphosphate), Preservative (Sorbic Acid), Colours (Beta-Carotene, Paprika Extract), Natural Flavouring), Thickener (Acetylated Di-Starch Adipate), Lemon Juice Concentrate, Natural Vanilla Flavouring, Stabiliser (Xanthan Gum), Salt.

ALLERGENS

Product Contains:

<b>Celery/Celeriac</b>	No	<b>Mustard</b>	No
<b>Cereals Containing Gluten</b>	Yes	<b>Nuts (Tree)</b>	No
<b>Barley</b>	Yes	<b>Almond nuts</b>	No
<b>Oats</b>	No	<b>Brazil nuts</b>	No
<b>Rye</b>	No	<b>Cashew nuts</b>	No
<b>Wheat (including Spelt and Khorasan)</b>	Yes	<b>Hazelnuts</b>	No
<b>Crustacea</b>	No	<b>Macadamia (Queensland) nuts</b>	No
<b>Eggs</b>	Yes	<b>Pecan nuts</b>	No
<b>Fish</b>	No	<b>Pistachio nuts</b>	No
<b>Lupin</b>	No	<b>Walnuts</b>	No
<b>Milk</b>	Yes	<b>Peanuts</b>	No
<b>Molluscs</b>	No	<b>Sesame Seeds</b>	No
		<b>Soybeans</b>	Yes
		<b>Sulphur Dioxide and Sulphites</b>	No

**Additional Allergen Information**

Allergens: For allergens (including cereals containing gluten) see ingredients in CAPITALS.

SUPPLEMENTARY  
INGREDIENT  
INFORMATION

<b>Palm Oil</b>	Yes
<b>Hydrogenated Vegetable Oil/Fat</b>	No
<b>GM Protein/DNA</b>	No

ADDITIVES

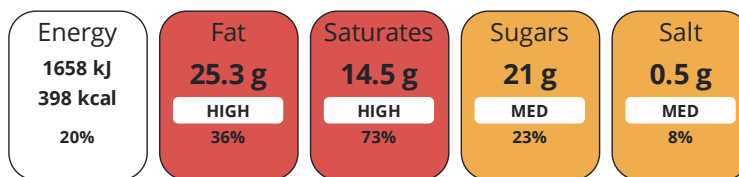
Product Contains:

<b>Artificial Antioxidants</b>	No	<b>Artificial Flavourings</b>	No
<b>Artificial Colours</b>	No	<b>Artificial Preservatives</b>	Yes
<b>Artificial Flavour Enhancers</b>	No	<b>Artificial Sweeteners</b>	No
<b>Vegan Diet</b>	No	<b>Vegetarian Diet</b>	Suitable for
<b>Halal Diet</b>	No	<b>Kosher Diet</b>	No

DIET  
SUITABILITY

NUTRITIONAL  
INFORMATION

Each 100g/ml portion contains:



of your reference intake.

Typical values per 100g/ml : Energy 398kcal / 1658kJ

Nutrient	per 100g	RI per 100g	per 22g serving	RI per 22g serving
<b>Energy (kJ)</b>	1658 kJ	20%	364.8 kJ	4%
<b>Energy (kcal)</b>	398 kcal	20%	87.6 kcal	4%
<b>Fat</b>	25.3 g	36%	5.6 g	8%
<b>of which Saturates</b>	14.5 g	73%	3.2 g	16%
<b>Carbohydrate</b>	36.7 g	14%	8.1 g	3%
<b>of which Sugars</b>	21 g	23%	4.6 g	5%
<b>Fibre</b>	1.6 g		0.4 g	
<b>Protein</b>	5 g	10%	1.1 g	2%
<b>Salt</b>	0.5 g	8%	0.1 g	2%

**Serving Size** 22 g

SUPPLEMENTARY  
NUTRITIONAL  
INFORMATION

HANDLING &  
STORAGE  
INFORMATION

**Directions For Use**

Defrosting Instructions: Remove the required amount of frozen confectionary from your freezer and place on a tray, place the tray into a refrigerated cabinet overnight to defrost. Ensure product is placed away from any produce that will taint or spoil the confectionary. Store chilled below 5°C. Ensure product is completely thawed before serving. Once thawed do not re-freeze and consume within 24 hours.

**Storage Instructions**

Store below -18°C. Once defrosted DO NOT re-freeze. Handle with care.

**Shelf Life from Time of Production** 547 Days **Exempt From Shelf Life Labelling** No

ACCREDITATIONS/  
CERTIFICATIONS/  
ASSURANCE  
SCHEMES



**Other Accreditation**

If you require full nutritional information for each individual cake you can request a product specification from Wrights. Please send your request to [specifications@wrightsfg.com](mailto:specifications@wrightsfg.com)

ORIGIN

**Product Country of Origin/Place of** United Kingdom

**Provenance**

**Additional Origin Details**

.

PRODUCT  
CHARACTERISTICS

Standards Testing

**Do you undertake trend analysis of microbiological results?** No **Is shelf life testing undertaken?** No

CONFIGURATION

Case Configuration

Inner Pack Configuration

**Total Quantity of Inner Components in Outer Case** 40 Units

**Is the Outer Case Splittable?** No

PRODUCT  
WEIGHTS

Inner Component

**Variable Weight Consumer Item** Yes

**Net Drained Weight** 0 g

Outer Case

**Outer Case Gross Weight** 2.1 kg

**Outer Case Net Weight** 1.7 kg

PRODUCT  
DIMENSIONS

Inner Component

**Inner Component Depth** 0 mm

**Inner Component Width** 0 mm

**Inner Component Height** 0 mm

Outer Case

**Outer Case Depth** 465 mm

**Outer Case Width** 360 mm

**Outer Case Height** 75 mm

PALLET INFORMATION

<b>Quantity of Cases Per Pallet Layer</b>	6 Cases	<b>Pallet Height</b>	1.36 MTR
<b>Quantity of Layers Per Pallet</b>	16 Layers	<b>Pallet Gross Weight</b>	236.6 kg
<b>Quantity of Cases Per Pallet</b>	96 Cases		

PACKAGING

Inner Component Packaging

Type	Materials	Weight	Recycled Plastic %	Recyclable	Returnable	Composite
Box	Plastic	45 g	- %			
Box	Other	6 g	- %			

Outer Case Packaging

Type	Materials	Weight	Recycled Plastic %	Recyclable	Returnable	Composite
Case	Paper/Cardboard	378 g	- %			
Case	Other	2 g	- %			

Transport Packaging

Type	Materials	Weight	Recycled Plastic %	Recyclable	Returnable	Composite
Other	Plastic	240 g	- %		Yes	
Other	Paper/Cardboard	386 g	- %		Yes	
Other	Wood	28000 g	- %		Yes	

OTHER INFORMATION

**Identification/Health Marks** GB AX028

**Manufacturer Comments**

Nutritional supplied is based on Mini chocolate éclair. If you require full nutritional information for each individual cake you can request a product specification from Wrights. Please send your request to specifications@wrightsfg.com

CONTACT INFORMATION

Address

Wrights Food Group  
Weston Road  
Crewe  
Cheshire  
CW1 6XQ  
England

~~P. (Phone)~~ 01270 504300

Complaints Contact

Maria Bogdan  
Technical Services Administrator  
technicalqueriescrewe@compleatfood.com

~~P. (Phone)~~ 01270 504300

Technical Contact

Nick Gollins  
Head of Technical  
nick.gollins@compleatfood.com

~~P. (Phone)~~ 01270 504300

Commercial Contact

Sarah Morris  
National Accounts Manager  
sarah.morris@compleatfood.com

~~P. (Phone)~~ 01270 504300

The information on the [Erudus System](#) has been supplied by the manufacturers of the products and, whilst the owners of the Erudus System take steps to ensure the information is regularly updated, they give no warranty and no guarantee that the information is accurate. Product information and ingredients may change, please always read product labels carefully in addition to using the information provided by Erudus.

We do not accept liability for any inaccuracies or incorrect information contained on this site.  
Please visit <http://www.erudus.com/terms-and-conditions> for full terms and conditions.