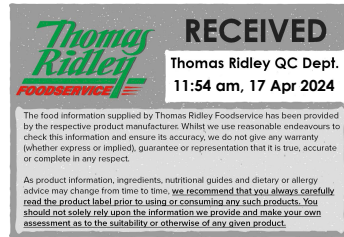


Changed Apr 17, 2024 08:20

Reviewed Apr 17, 2024 08:20

Erudus ID d19204c8aef44f36a09af08f0a954a3e

Version 3.0



11220

# Gluten Free Breaded Chicken Goujons

Gluten Free Breaded Chicken Goujons 3x1000g

## PRODUCT DESCRIPTION

100% CHICKEN BREAST IN A GOLDEN BREADCRUMB

Brand	RIVERSIDE
Manufacturer Product Code	GLF01A
Product Type	Food
Product Category	Chicken & Turkey
Storage Type	Frozen
Erudus ID	d19204c8aef44f36a09af08f0a954a3e
Specification Type	Meat



Inner Component GTIN	3850159142703
Outer Case GTIN	03850159142703



## INGREDIENTS

### Ingredient Declaration

chicken breast (64%), maize, maize starch, water, maize flour, rapeseed oil, sugar, salt, yeast extract, garlic powder, onion powder, white pepper, thickener (xanthan gum) emulsifier lecithin (sunflower) raising agents (E450, E500(ii))

## ALLERGENS

Product Contains:

Celery/Celeriac	No	Mustard	No
Cereals Containing Gluten	No	Nuts (Tree)	No
Barley	No	Almond nuts	No
Oats	No	Brazil nuts	No
Rye	No	Cashew nuts	No
Wheat (including Spelt and Khorasan)	No	Hazelnuts	No
Crustacea	No	Macadamia (Queensland) nuts	No
Eggs	No	Pecan nuts	No
Fish	No	Pistachio nuts	No
Lupin	No	Walnuts	No
Milk	No	Peanuts	No
Molluscs	No	Sesame Seeds	No
		Soybeans	No
		Sulphur Dioxide and Sulphites	No

## SUPPLEMENTARY INGREDIENT INFORMATION

Palm Oil	No
Hydrogenated Vegetable Oil/Fat	No
GM Protein/DNA	No

ADDITIVES

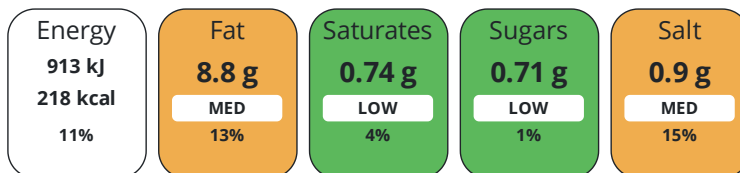
Product Contains:

<b>Artificial Antioxidants</b>	No	<b>Artificial Flavourings</b>	No
<b>Artificial Colours</b>	No	<b>Artificial Preservatives</b>	No
<b>Artificial Flavour Enhancers</b>	No	<b>Artificial Sweeteners</b>	No
<b>Halal Diet</b>	Suitable for	<b>Kosher Diet</b>	No

DIET SUITABILITY

NUTRITIONAL INFORMATION

Each 100g/ml portion contains:



of your reference intake.

Typical values per 100g/ml : Energy 218kcal / 913kj

Nutrient	per 100g	RI per 100g	per 100g serving	RI per 100g serving
<b>Energy (kJ)</b>	913 kJ	11%	913 kJ	11%
<b>Energy (kcal)</b>	218 kcal	11%	218 kcal	11%
<b>Fat</b>	8.8 g	13%	8.8 g	13%
<b>of which Saturates</b>	0.74 g	4%	0.7 g	4%
<b>Carbohydrate</b>	18.67 g	7%	18.7 g	7%
<b>of which Sugars</b>	0.71 g	1%	0.7 g	1%
<b>Protein</b>	16.07 g	32%	16.1 g	32%
<b>Salt</b>	0.9 g	15%	0.9 g	15%

**Serving Size** 100 g

**Source of Nutritional Information** Manufacturers analysis

SUPPLEMENTARY NUTRITIONAL INFORMATION

HANDLING & STORAGE INFORMATION

**Directions For Use**

(from frozen / defrost) – recommend cook from frozen To oven bake: Place on a baking sheet in a pre-heated fan assisted oven (200°C)Cook for 15-20 minutes, turning once To Deep Fry: Fry in hot oil (180°C) for 1-2minutes, drain and serve To Microwave: Cook on high for 1 - 2 minutes To Air Fry: Air Fry @ (180°C) for 9 minutes, drain and serve

**Storage Instructions**

Product Shelf Life – 18months from date of production Product Shelf Life after defrosting – cook within 24 hours

**Shelf Life from Time of Production** 540 Days **Exempt From Shelf Life Labelling** No

ACCREDITATIONS/ CERTIFICATIONS/ ASSURANCE SCHEMES

<b>BRCGS Certified</b>	<b>BRCGS Food Safety</b>
<b>Association of European Coeliac Societies (AOECS)</b>	<b>IFS Food Standard</b>
<b>Other Accreditation</b>	

ORIGIN

**Product Country of Origin/Place of Provenance** Croatia

**Additional Origin Details**

HR61EU

PRODUCT CHARACTERISTICS

Standards Testing

<b>Do you undertake trend analysis of microbiological results?</b>	No	<b>Is shelf life testing undertaken?</b>	Yes		
Microbiological Standards					
Organism	Description	Frequency	Target	Maximum	Sample (g or ml)
Total Viable Count (TVC) (cfu/g or ml)		Every Batch	<10000	100000	100
Enterobacteriaceae (cfu/g or ml)		Every Batch	<10000	10000	100
E. Coli (cfu/g or ml)		Every Batch	<20	100	100
Salmonella (cfu/g or ml)		Every Batch	=0	0	25
Listeria SPP (cfu/g or ml)		Every Batch	=0	0	25
Staphylococcus Aureus (cfu/g or ml)		Every Batch	<20	100	100
Clostridium Perfringens (cfu/g or ml)		Every Batch	<20	100	100

CONFIGURATION

Case Configuration		Inner Pack Configuration	
<b>Variable Inner Components in Outer Case</b>	No	<b>Count per Inner Component</b>	3
<b>Total Quantity of Inner Components in Outer Case</b>	3 Units		
<b>Is the Outer Case Splittable?</b>	No		

PRODUCT WEIGHTS

Inner Component	
<b>Variable Weight Consumer Item</b>	No
<b>Inner Component Weight</b>	1000 g
<b>Net Drained Weight</b>	0 g
Outer Case	
<b>Outer Case Gross Weight</b>	3.2 kg
<b>Outer Case Net Weight</b>	3 kg

PRODUCT DIMENSIONS

Inner Component	
<b>Inner Component Depth</b>	230 mm
<b>Inner Component Width</b>	195 mm
<b>Inner Component Height</b>	105 mm
Outer Case	
<b>Outer Case Depth</b>	285 mm
<b>Outer Case Width</b>	230 mm
<b>Outer Case Height</b>	130 mm

PALLET INFORMATION

<b>Quantity of Cases Per Pallet Layer</b>	16 Cases	<b>Pallet Height</b>	2.1 MTR
<b>Quantity of Layers Per Pallet</b>	15 Layers	<b>Pallet Gross Weight</b>	768 kg
<b>Quantity of Cases Per Pallet</b>	240 Cases		

PACKAGING

Inner Component Packaging						
Type	Materials	Weight	Recycled Plastic %	Recyclable	Returnable	Composite
Bag	Plastic	6 g	- %			
Outer Case Packaging						
Type	Materials	Weight	Recycled Plastic %	Recyclable	Returnable	Composite
Case	Paper/Cardboard	194 g	- %			

Transport Packaging

Type	Materials	Weight	Recycled Plastic %	Recyclable	Returnable	Composite
Other	Plastic	500 g	- %			
Other	Paper/Cardboard	10 g	- %			
Other	Wood	20000 g	- %			

OTHER INFORMATION

Identification/Health Marks

HR61EU

**Manufacturer Comments**

Minimum quantities of 208 cases

CONTACT INFORMATION

Address

Riverside Food Services  
 Units 1-5, The Stables  
 Sutton Farm, West Felton  
 Oswestry  
 Shropshire  
 SY11 4HX  
 United Kingdom

P: (Phone) 01691839288

Complaints Contact

James Gedling  
 Technical Manager  
 jamesgedling@riversidefoods.co.uk

P: (Phone) 01691839288

Technical Contact

James Gedling  
 Technical Manager  
 jamesgedling@riversidefoods.co.uk

P: (Phone) 01691880019

Commercial Contact

Leigh T Morris  
 Managing Director  
 LeighMorris@Riversidefoods.co.uk

P: (Phone) 01691 839288

The information on the [Erudus System](#) has been supplied by the manufacturers of the products and, whilst the owners of the Erudus System take steps to ensure the information is regularly updated, they give no warranty and no guarantee that the information is accurate. Product information and ingredients may change, please always read product labels carefully in addition to using the information provided by Erudus.

We do not accept liability for any inaccuracies or incorrect information contained on this site.  
 Please visit <http://www.erudus.com/terms-and-conditions> for full terms and conditions.