


Changed Apr 17, 2024 08:19

Reviewed Apr 17, 2024 08:19

Erudus ID 5f4137b2692f42e698d4f272997fde9f

Version 7.0



RECEIVED
Thomas Ridley QC Dept.
11:52 am, 17 Apr 2024

The food information supplied by Thomas Ridley Foodservice has been provided by the respective product manufacturer. Whilst we use reasonable endeavours to check this information and ensure its accuracy, we do not give any warranty (whether express or implied), guarantee or representation that it is true, accurate or complete in any respect.

As product information, ingredients, nutritional guides and dietary or allergy advice may change from time to time, we recommend that you always carefully read the product label prior to using or consuming any such products. You should not solely rely upon the information we provide and make your own assessment as to the suitability or otherwise of any given product.



Gluten Free Breaded Turkey Escalopes

Gluten Free Breaded Turkey Escalopes 3x1000g

PRODUCT DESCRIPTION

100% TURKEY BREAST IN A GOLDEN BREADCRUMB

Brand	RIVERSIDE
Manufacturer Product Code	GLFTK01A
Product Type	Food
Product Category	Chicken & Turkey
Storage Type	Frozen
Erudus ID	5f4137b2692f42e698d4f272997fde9f
Specification Type	Meat



Inner Component GTIN	3850159167867
Manufacturer Component Code	GLFTK01A
Outer Case GTIN	03850159167867



INGREDIENTS

Ingredient Declaration

turkey breast (61%), maize, maize starch, water, maize flour, rapeseed oil, sugar, salt, yeast extract, garlic powder, onion powder, white pepper, thickener (xanthan gum) emulsifier lecithin (sunflower) raising agents (E450, E500(ii))

ALLERGENS

Product Contains:

Celery/Celery	No	Mustard	No
Cereals Containing Gluten	No	Nuts (Tree)	No
Barley	No	Almond nuts	No
Oats	No	Brazil nuts	No
Rye	No	Cashew nuts	No
Wheat (including Spelt and Khorasan)	No	Hazelnuts	No
Crustacea	No	Macadamia (Queensland) nuts	No
Eggs	No	Pecan nuts	No
Fish	No	Pistachio nuts	No
Lupin	No	Walnuts	No
Milk	No	Peanuts	No
Molluscs	No	Sesame Seeds	No
		Soybeans	No
		Sulphur Dioxide and Sulphites	No

SUPPLEMENTARY INGREDIENT INFORMATION

Palm Oil	No
Hydrogenated Vegetable Oil/Fat	No
GM Protein/DNA	No

ADDITIVES

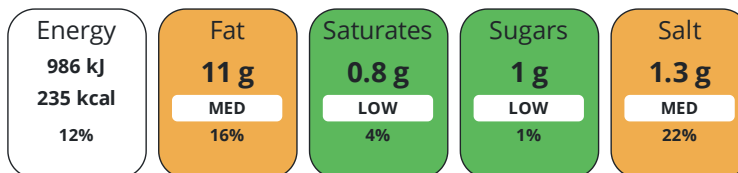
Product Contains:

Artificial Antioxidants	No	Artificial Flavourings	No
Artificial Colours	No	Artificial Preservatives	No
Artificial Flavour Enhancers	No	Artificial Sweeteners	No
Halal Diet	Suitable for	Kosher Diet	No

DIET SUITABILITY

NUTRITIONAL INFORMATION

Each 100g/ml portion contains:



of your reference intake.

Typical values per 100g/ml : Energy 235kcal / 986kj

Nutrient	per 100g	RI per 100g	per 200g serving	RI per 200g serving	per 200g of prepared product
Energy (kJ)	986 kJ	12%	1972 kJ	23%	-
Energy (kcal)	235 kcal	12%	470 kcal	24%	-
Fat	11 g	16%	22 g	31%	-
of which Saturates	0.8 g	4%	1.6 g	8%	-
Carbohydrate	20.6 g	8%	41.2 g	16%	-
of which Sugars	1 g	1%	2 g	2%	-
Protein	13.5 g	27%	27 g	54%	-
Salt	1.3 g	22%	2.6 g	43%	-

Serving Size	200 g
Serving Size Description	one turkey escalope
Number of Servings	5 Servings

Source of Nutritional Information Manufacturers analysis

SUPPLEMENTARY NUTRITIONAL INFORMATION

HANDLING & STORAGE INFORMATION

Directions For Use

(from frozen / defrost) – recommend cook from frozen To oven bake: Place on a baking sheet in a pre-heated fan assisted oven (200°C)Cook for 15-20 minutes, turning once To Deep Fry: Fry in hot oil (180°C) for 6-8minutes, drain and serve To Microwave: Cook on high for 1 - 2 minutes To Air Fry: Air Fry @ (180°C) for 9 minutes, drain and serve

Storage Instructions

Product Shelf Life – 18months from date of production Product Shelf Life after defrosting – cook within 24 hours

Shelf Life from Time of Production	540 Days	Exempt From Shelf Life Labelling	No
-------------------------------------------	----------	-----------------------------------------	----

ACCREDITATIONS/ CERTIFICATIONS/ ASSURANCE SCHEMES

BRCGS Certified	BRCGS Food Safety
Association of European Coeliac Societies (AOECS)	IFS Food Standard
Other Accreditation	

ORIGIN	Product Country of Origin/Place of Provenance	Croatia				
	Additional Origin Details	Croatia				
PRODUCT CHARACTERISTICS	Standards Testing					
	Do you undertake trend analysis of microbiological results?	No	Is shelf life testing undertaken?	Yes		
	Microbiological Standards					
	Organism	Description	Frequency	Target	Maximum	Sample (g or ml)
	Total Viable Count (TVC) (cfu/g or ml)		Every Batch	<10000	100000	100
	Enterobacteriaceae (cfu/g or ml)		Every Batch	<10000	10000	100
	E. Coli (cfu/g or ml)		Every Batch	<20	100	100
	Salmonella (cfu/g or ml)		Every Batch	=0	0	25
	Listeria SPP (cfu/g or ml)		Every Batch	=0	0	25
	Staphylococcus Aureus (cfu/g or ml)		Every Batch	<20	100	100
Clostridium Perfringens (cfu/g or ml)		Every Batch	<20	100	100	
SUPPLEMENTARY INFORMATION						
Desinewed Meat	No	Reformed	No			
Skeletal Bones	No	Fried During Manufacture	Yes			
Skin	No	Closure Type	heat sealed			
Cut Details	breast fillet					
HAZARD CONTROLS						
Metal Detection	Yes	X-ray	Yes			
CONFIGURATION	Case Configuration	Inner Pack Configuration				
	Variable Inner Components in Outer Case	No				
	Total Quantity of Inner Components in Outer Case	3 Units				
	Is the Outer Case Splittable?	No				
PRODUCT WEIGHTS	Inner Component					
	Variable Weight Consumer Item	No				
	Inner Component Weight	1000 g				
	Net Drained Weight	0 g				
	Outer Case					
	Outer Case Gross Weight	3.2 kg				
	Outer Case Net Weight	3 kg				

PRODUCT DIMENSIONS

Inner Component	
Inner Component Depth	230 mm
Inner Component Width	195 mm
Inner Component Height	105 mm
Outer Case	
Outer Case Depth	285 mm
Outer Case Width	230 mm
Outer Case Height	130 mm

PALLET INFORMATION

Quantity of Cases Per Pallet Layer	16 Cases	Pallet Height	2.1 MTR
Quantity of Layers Per Pallet	15 Layers	Pallet Gross Weight	768 kg
Quantity of Cases Per Pallet	240 Cases		

PACKAGING

Inner Component Packaging						
Type	Materials	Weight	Recycled Plastic %	Recyclable	Returnable	Composite
Bag	Plastic	6 g	- %			
Outer Case Packaging						
Type	Materials	Weight	Recycled Plastic %	Recyclable	Returnable	Composite
Case	Paper/Cardboard	194 g	- %			
Transport Packaging						
Type	Materials	Weight	Recycled Plastic %	Recyclable	Returnable	Composite
Other	Plastic	500 g	- %			
Other	Paper/Cardboard	10 g	- %			
Other	Wood	20000 g	- %			

MARKETING INFORMATION

Marketing Description
100% Turkey Breast In A Golden Breadcrumb

OTHER INFORMATION

Identification/Health Marks HR61EU

Manufacturer Comments

Minimum quantities of 208 cases

CONTACT INFORMATION

Address	Technical Contact
Riverside Food Services	James Gedling
Units 1-5, The Stables	Technical Manager
Sutton Farm, West Felton	jamesgedling@riversidefoods.co.uk
Oswestry	
Shropshire	<u>P: (Phone)</u> 01691880019
SY11 4HX	
United Kingdom	
<u>P: (Phone)</u> 01691839288	
Complaints Contact	Commercial Contact
James Gedling	Leigh T Morris
Technical Manager	Managing Director
jamesgedling@riversidefoods.co.uk	LeighMorris@Riversidefoods.co.uk
<u>P: (Phone)</u> 01691839288	<u>P: (Phone)</u> 01691 839288

The information on the [Erudus System](#) has been supplied by the manufacturers of the products and, whilst the owners of the Erudus System take steps to ensure the information is regularly updated, they give no warranty and no guarantee that the information is accurate. Product information and ingredients may change, please always read product labels carefully in addition to using the information provided by Erudus.

We do not accept liability for any inaccuracies or incorrect information contained on this site.
Please visit <http://www.erudus.com/terms-and-conditions> for full terms and conditions.