

Changed Apr 17, 2024 08:23

Reviewed Apr 17, 2024 08:23

Erudus ID 6b2b2d331e0a48a88d31d3c836b879d3

Version 3.0

11227

Gluten Free Breaded Chicken Chunks


Gluten Free Breaded Chicken Chunks 3x1000g

PRODUCT DESCRIPTION

Chicken Breast with a Gluten Free Breaded Coating


Brand	RIVERSIDE
Manufacturer Product Code	GLF02A
Product Type	Food
Product Category	Chicken & Turkey
Storage Type	Frozen
Erudus ID	6b2b2d331e0a48a88d31d3c836b879d3
Specification Type	Meat
Inner Component GTIN	3850159142710
Manufacturer Component Code	GLF02A
Outer Case GTIN	03850159142710





RECEIVED

Thomas Ridley QC Dept.
11:58 am, 17 Apr 2024



The food information supplied by Thomas Ridley Foodservice has been provided by the respective product manufacturer. Whilst we use reasonable endeavours to check this information and ensure its accuracy, we do not give any warranty (whether express or implied), guarantee or representation that it is true, accurate or complete in any respect.

As product information, ingredients, nutritional guides and dietary or allergy advice may change from time to time, we recommend that you always carefully read the product label prior to using or consuming any such products. You should not solely rely upon the information we provide and make your own assessment as to the suitability or otherwise of any given product.



INGREDIENTS

Ingredient Declaration

chicken breast (69%), maize, maize starch, water, maize flour, rapeseed oil, sugar, salt, yeast extract, garlic powder, onion powder, white pepper, thickener (xanthan gum) emulsifier lecithin (sunflower) raising agents (E450, E500(ii))

ALLERGENS

Product Contains:

Celery/Celeriac	No	Mustard	No
Cereals Containing Gluten	No	Nuts (Tree)	No
Barley	No	Almond nuts	No
Oats	No	Brazil nuts	No
Rye	No	Cashew nuts	No
Wheat (including Spelt and Khorasan)	No	Hazelnuts	No
Crustacea	No	Macadamia (Queensland) nuts	No
Eggs	No	Pecan nuts	No
Fish	No	Pistachio nuts	No
Lupin	No	Walnuts	No
Milk	No	Peanuts	No
Molluscs	No	Sesame Seeds	No
		Soybeans	No
		Sulphur Dioxide and Sulphites	No

SUPPLEMENTARY INGREDIENT INFORMATION

Palm Oil	No
Hydrogenated Vegetable Oil/Fat	No
GM Protein/DNA	No

ADDITIVES

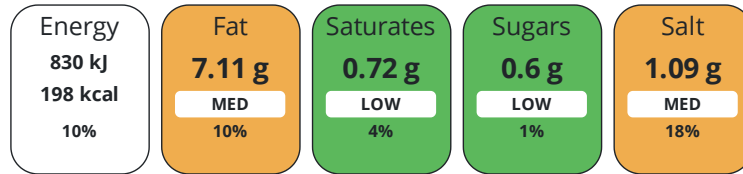
Product Contains:

Artificial Antioxidants	No	Artificial Flavourings	No
Artificial Colours	No	Artificial Preservatives	No
Artificial Flavour Enhancers	No	Artificial Sweeteners	No
Halal Diet	Suitable for	Kosher Diet	No

DIET SUITABILITY

NUTRITIONAL INFORMATION

Each 100g/ml portion contains:



of your reference intake.

Typical values per 100g/ml : Energy 198kcal / 830kj

Nutrient	per 100g	RI per 100g	per 100g serving	RI per 100g serving	per 100g of prepared product
Energy (kJ)	830 kJ	10%	830 kJ	10%	-
Energy (kcal)	198 kcal	10%	198 kcal	10%	-
Fat	7.11 g	10%	7.1 g	10%	-
of which Saturates	0.72 g	4%	0.7 g	4%	-
Carbohydrate	16.77 g	6%	16.8 g	6%	-
of which Sugars	0.6 g	1%	0.6 g	1%	-
Protein	16.81 g	34%	16.8 g	34%	-
Salt	1.09 g	18%	1.1 g	18%	-
Serving Size	100 g				
Serving Size Description	3 or 4 chunks				
Source of Nutritional Information	Manufacturers analysis				

SUPPLEMENTARY NUTRITIONAL INFORMATION

HANDLING & STORAGE INFORMATION

Directions For Use

(from frozen / defrost) – recommend cook from frozen To oven bake: Place on a baking sheet in a pre-heated fan assisted oven (200°C)Cook for 15-20 minutes, turning once To Deep Fry: Fry in hot oil (180°C) for 3-4minutes, drain and serve To Microwave: Cook on high for 1 - 2 minutes To Air Fry: Air Fry @ (180°C) for 9 minutes, drain and serve

Storage Instructions

Product Shelf Life – 18months from date of production Product Shelf Life after defrosting – cook within 24 hours

Shelf Life from Time of Production	540 Days	Exempt From Shelf Life Labelling	No
BRCGS Certified		BRCGS Food Safety	
Association of European Coeliac Societies (AOECS)		IFS Food Standard	
Other Accreditation			

ACCREDITATIONS/ CERTIFICATIONS/ ASSURANCE SCHEMES

ORIGIN

Product Country of Origin/Place of Provenance	Croatia
Additional Origin Details	HR61EU

PRODUCT CHARACTERISTICS

Standards Testing

Do you undertake trend analysis of microbiological results?	No	Is shelf life testing undertaken?	Yes
--	----	--	-----

Microbiological Standards

Organism	Description	Frequency	Target	Maximum	Sample (g or ml)
Total Viable Count (TVC) (cfu/g or ml)		Every Batch	<10000	100000	100
Enterobacteriaceae (cfu/g or ml)		Every Batch	<10000	10000	100
E. Coli (cfu/g or ml)		Every Batch	<20	100	100
Salmonella (cfu/g or ml)		Every Batch	=0	0	25
Listeria SPP (cfu/g or ml)		Every Batch	=0	0	25
Staphylococcus Aureus (cfu/g or ml)		Every Batch	<20	100	100
Clostridium Perfringens (cfu/g or ml)		Every Batch	<20	100	100

SUPPLEMENTARY INFORMATION

Desinewed Meat	No	Reformed	No
Skeletal Bones	No	Fried During Manufacture	Yes
Skin	No	Closure Type	heat sealed
Cut Details	breast fillet pieces		

HAZARD CONTROLS

Metal Detection	Yes	X-ray	Yes
------------------------	-----	--------------	-----

CONFIGURATION

Case Configuration		Inner Pack Configuration	
Total Quantity of Inner Components in Outer Case	3 Units	Count per Inner Component	3
Is the Outer Case Splittable?	No		

PRODUCT WEIGHTS

Inner Component	
Variable Weight Consumer Item	No
Inner Component Weight	1000 g
Net Drained Weight	0 g
Outer Case	
Outer Case Gross Weight	3.2 kg
Outer Case Net Weight	3 kg

PRODUCT DIMENSIONS

Inner Component	
Inner Component Depth	230 mm
Inner Component Width	195 mm
Inner Component Height	105 mm
Outer Case	
Outer Case Depth	285 mm
Outer Case Width	230 mm
Outer Case Height	130 mm

PALLET INFORMATION

Quantity of Cases Per Pallet Layer	16 Cases	Pallet Height	2.1 MTR
Quantity of Layers Per Pallet	15 Layers	Pallet Gross Weight	768 kg
Quantity of Cases Per Pallet	240 Cases		

PACKAGING

Inner Component Packaging

Type	Materials	Weight	Recycled Plastic %	Recyclable	Returnable	Composite
Bag	Plastic	6 g	- %			

Outer Case Packaging

Type	Materials	Weight	Recycled Plastic %	Recyclable	Returnable	Composite
Case	Paper/Cardboard	194 g	- %			

Transport Packaging

Type	Materials	Weight	Recycled Plastic %	Recyclable	Returnable	Composite
Other	Plastic	500 g	- %			
Other	Paper/Cardboard	10 g	- %			
Other	Wood	20000 g	- %			

MARKETING INFORMATION

Marketing Description

100% Chicken Breast with a Gluten Free Breaded Coating

OTHER INFORMATION

Identification/Health Marks

HR61EU

Manufacturer Comments

Minimum quantities of 208 cases

CONTACT INFORMATION

Address

Riverside Food Services
 Units 1-5, The Stables
 Sutton Farm, West Felton
 Oswestry
 Shropshire
 SY11 4HX
 United Kingdom

P: (Phone) 01691839288

Complaints Contact

James Gedling
 Technical Manager
 jamesgedling@riversidefoods.co.uk

P: (Phone) 01691839288

Technical Contact

James Gedling
 Technical Manager
 jamesgedling@riversidefoods.co.uk

P: (Phone) 01691880019

Commercial Contact

Leigh T Morris
 Managing Director
 LeighMorris@Riversidefoods.co.uk

P: (Phone) 01691 839288

The information on the [Erudus System](#) has been supplied by the manufacturers of the products and, whilst the owners of the Erudus System take steps to ensure the information is regularly updated, they give no warranty and no guarantee that the information is accurate. Product information and ingredients may change, please always read product labels carefully in addition to using the information provided by Erudus.

We do not accept liability for any inaccuracies or incorrect information contained on this site. Please visit <http://www.erudus.com/terms-and-conditions> for full terms and conditions.