


**Changed** Apr 26, 2024 12:38  
**Reviewed** Apr 26, 2024 12:38  
**Erudus ID** 3453b900bccca472a9f459a8e6b327941  
**Version** 2.0



**RECEIVED**  
Thomas Ridley QC Dept.  
4:13 pm, 26 Apr 2024

The food information supplied by Thomas Ridley Foodservice has been provided by the respective product manufacturer. Whilst we use reasonable endeavours to check this information and ensure its accuracy, we do not give any warranty (whether express or implied), guarantee or representation that it is true, accurate or complete in any respect.

As product information, ingredients, nutritional guides and dietary or allergy advice may change from time to time, we recommend that you always carefully read the product label prior to using or consuming any such products. You should not solely rely upon the information we provide and make your own assessment as to the suitability or otherwise of any given product.



# YF Plant Based Salted Caramel Ice Cream 120ml

Yf Plant Based Salted Caramel Ice Cream

## PRODUCT DESCRIPTION

Plant Based Salted Caramel Ice Cream

<b>Brand</b>	Yarde Farm
<b>Manufacturer Product Code</b>	573MT
<b>Product Type</b>	Food
<b>Product Category</b>	Other
<b>Storage Type</b>	Frozen
<b>Erudus ID</b>	3453b900bccca472a9f459a8e6b327941
<b>Specification Type</b>	Generic
<b>Inner Component GTIN</b>	5060193174440
<b>Outer Case GTIN</b>	5060193174457



## INGREDIENTS

### Ingredient Declaration

Water, Sugar, Polydextrose, Coconut Oil, Caramel (3%) [Glucose Syrup, Burnt Sugar, Sugar, Flavours], Dried Glucose Syrup, Emulsifier & Stabiliser Blend [Emulsifier: Mono- & Di-Glycerides Of Fatty Acids. Stabilisers: Locust Bean Gum, Guar Gum, Carrageenan.], Natural Flavouring, Sea Salt (0.02%).

## ALLERGENS

Product Contains:

<b>Celery/Celeriac</b>	No
<b>Cereals Containing Gluten</b>	No
<b>Barley</b>	No
<b>Oats</b>	No
<b>Rye</b>	No
<b>Wheat (including Spelt and Khorasan)</b>	No
<b>Crustacea</b>	No
<b>Eggs</b>	May Contain
<b>Fish</b>	No
<b>Lupin</b>	No
<b>Milk</b>	May Contain
<b>Molluscs</b>	No
<b>Mustard</b>	No
<b>Nuts (Tree)</b>	May Contain
<b>Almond nuts</b>	May Contain
<b>Brazil nuts</b>	May Contain
<b>Cashew nuts</b>	May Contain
<b>Hazelnuts</b>	May Contain
<b>Macadamia (Queensland) nuts</b>	May Contain
<b>Pecan nuts</b>	May Contain
<b>Pistachio nuts</b>	May Contain
<b>Walnuts</b>	May Contain
<b>Peanuts</b>	May Contain
<b>Sesame Seeds</b>	No
<b>Soybeans</b>	May Contain
<b>Sulphur Dioxide and Sulphites</b>	No

Risk Source:

#### Additional Allergen Information

Allergy Advice: For allergens, see ingredients in bold. May also contain: milk, nuts, peanuts, egg and soya.

#### SUPPLEMENTARY INGREDIENT INFORMATION

<b>Palm Oil</b>	No
<b>Hydrogenated Vegetable Oil/Fat</b>	No
<b>GM Protein/DNA</b>	No

#### ADDITIVES

Product Contains:

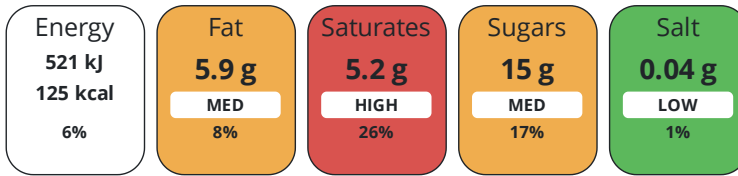
<b>Artificial Antioxidants</b>	No
<b>Artificial Colours</b>	No
<b>Artificial Flavour Enhancers</b>	No
<b>Artificial Flavourings</b>	No
<b>Artificial Preservatives</b>	No
<b>Artificial Sweeteners</b>	No

#### DIET SUITABILITY

<b>Vegan Diet</b>	Suitable for	<b>Vegetarian Diet</b>	Suitable for
<b>Halal Diet</b>	No	<b>Kosher Diet</b>	No

#### NUTRITIONAL INFORMATION

Each 100g/ml portion contains:



of your reference intake.

Typical values per 100g/ml : Energy 125kcal / 521kj

Nutrient	per 100g	RI per 100g
Energy (kJ)	521 kJ	6%
Energy (kcal)	125 kcal	6%
Fat	5.9 g	8%
of which Saturates	5.2 g	26%
Carbohydrate	18 g	7%
of which Sugars	15 g	17%
Protein	0 g	0%
Salt	0.04 g	1%

SUPPLEMENTARY NUTRITIONAL INFORMATION

HANDLING & STORAGE INFORMATION

Directions For Use

Serve frozen.

Storage Instructions

Keep frozen below -18C. (Do not refreeze if defrosted).

Shelf Life from Time of Production

730 Days

Exempt From Shelf Life Labelling

No

ACCREDITATIONS/ CERTIFICATIONS/ ASSURANCE SCHEMES

BRCGS Certified

ORIGIN

Product Country of Origin/Place of

United Kingdom

Provenance

PRODUCT CHARACTERISTICS

Standards Testing

Do you undertake trend analysis of microbiological results?

Yes

Is shelf life testing undertaken?

Yes

Microbiological Standards

Organism	Description	Frequency	Target	Maximum	Sample (g or ml)
Coliforms (cfu/g or ml)		Every Batch	<10	100	1
E. Coli (cfu/g or ml)		Monthly	<10	10	1
Listeria SPP (cfu/g or ml)		Every Batch	=0	0	25
Listeria Monocytogenes (cfu/g or ml)		Every Batch	<10	10	1
Salmonella (cfu/g or ml)		Monthly	=0	0	25
Aerobic Colony Count (ACC) (cfu/g or ml)		Every Batch	<10000	500000	1

Organism	Description	Frequency	Target	Maximum	Sample (g or ml)
Coagulase-positive Staphylococci (cfu/g or ml)		Monthly	<20	100	1

#### HAZARD CONTROLS

<b>Metal Detection</b>	Yes	<b>Filters</b>	Yes
------------------------	-----	----------------	-----

#### CONFIGURATION

Case Configuration

<b>Total Quantity of Inner Components in Outer Case</b>	12 Units
---	----------

<b>Is the Outer Case Splittable?</b>	Yes
--------------------------------------	-----

Inner Pack Configuration

#### PRODUCT WEIGHTS

Inner Component

<b>Variable Weight Consumer Item</b>	Yes
--------------------------------------	-----

<b>Inner Component Volume</b>	120 ml
-------------------------------	--------

Outer Case

<b>Outer Case Gross Weight</b>	1.05 kg
--------------------------------	---------

<b>Outer Case Net Weight</b>	0.96 kg
------------------------------	---------

#### PRODUCT DIMENSIONS

Inner Component

<b>Inner Component Depth</b>	5 mm
------------------------------	------

<b>Inner Component Width</b>	71 mm
------------------------------	-------

<b>Inner Component Height</b>	83 mm
-------------------------------	-------

Outer Case

<b>Outer Case Depth</b>	151 mm
-------------------------	--------

<b>Outer Case Width</b>	144 mm
-------------------------	--------

<b>Outer Case Height</b>	222 mm
--------------------------	--------

#### PALLET INFORMATION

<b>Quantity of Cases Per Pallet Layer</b>	12 Cases
---	----------

<b>Quantity of Layers Per Pallet</b>	10 Layers
--------------------------------------	-----------

<b>Quantity of Cases Per Pallet</b>	300 Cases
-------------------------------------	-----------

<b>Pallet Height</b>	1.76 MTR
----------------------	----------

<b>Pallet Gross Weight</b>	333 kg
----------------------------	--------

#### PACKAGING

Inner Component Packaging

Type	Materials	Weight	Recycled Plastic %	Recyclable	Returnable	Composite
Tub	Paper/Cardboard	10 g	- %			

Outer Case Packaging

Type	Materials	Weight	Recycled Plastic %	Recyclable	Returnable	Composite
Case	Paper/Cardboard	85 g	- %			

Transport Packaging

Type	Materials	Weight	Recycled Plastic %	Recyclable	Returnable	Composite
Other	Plastic	240 g	- %		Yes	
Other	Wood	18000 g	- %		Yes	

#### OTHER INFORMATION

## CONTACT INFORMATION

### Address

Yarde Farm  
16b Barn Close  
Plymouth  
PL7 5HQ  
United Kingdom

P: (Phone) 01752340888

### Technical Contact

Anna Tatkiwicz  
Technical Manager  
technical@yardefarmicecream.co.uk

P: (Phone) 01752340888

The information on the [Erudus System](#) has been supplied by the manufacturers of the products and, whilst the owners of the Erudus System take steps to ensure the information is regularly updated, they give no warranty and no guarantee that the information is accurate. Product information and ingredients may change, please always read product labels carefully in addition to using the information provided by Erudus.

We do not accept liability for any inaccuracies or incorrect information contained on this site.  
Please visit <http://www.erudus.com/terms-and-conditions> for full terms and conditions.