

Changed Jul 22, 2024 15:57

Reviewed Jul 22, 2024 15:57

Erudus ID be32b2d095d74bb290a118f1a0074eca

Version 2.0

11288

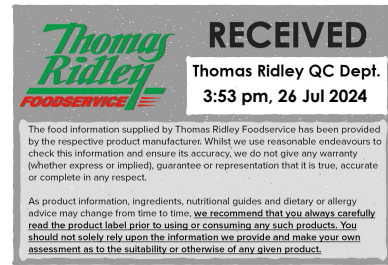
Sage & Onion Stuffing 4 x 2kg

Sage & Onion Stuffing

PRODUCT DESCRIPTION

Beige crumb base with brown and green flecks, free flowing powder with bready, sage & onion notes, flavour & colour. Free from foreign taints, odours or other contaminants.

Brand	Richard Whittaker Ltd
Manufacturer Product Code	JB005SSO02KG
Product Type	Food
Product Category	Condiments
Storage Type	Ambient
Erudus ID	be32b2d095d74bb290a118f1a0074eca
Specification Type	Generic



Inner Component GTIN	5033897102101
Outer Case GTIN	5033897102118



INGREDIENTS

Ingredient Declaration

Breadrusk (WHEAT) (WHEAT Flour (Calcium Carbonate, Iron, Niacin, Thiamin), Water, Salt, Yeast)
Fried Onions (3%) [WHEAT Flour, (Calcium Carbonate, Iron, Niacin, Thiamin) Palm Oil, Salt]
Dried Onion (2.5%)
Salt,
Sunflower Oil,
Dried Sage (0.9%)
Rubbed Parsley
Flavouring (Salt, Sage Extract, Anticaking Agent E551)
Black Ground Pepper.

ALLERGENS

Product Contains:

Celery/Celeriac	No	Mustard	No
Cereals Containing Gluten	Yes	Nuts (Tree)	No
Barley	No	Almond nuts	No
Oats	No	Brazil nuts	No
Rye	No	Cashew nuts	No
Wheat (including Spelt and Khorasan)	Yes	Hazelnuts	No
Crustacea	No	Macadamia (Queensland) nuts	No
Eggs	No	Pecan nuts	No
Fish	No	Pistachio nuts	No
Lupin	No	Walnuts	No
Milk	No	Peanuts	No
Molluscs	No	Sesame Seeds	No
		Soybeans	No
		Sulphur Dioxide and Sulphites	No

Allergen Statement On Pack

Contains gluten from wheat-Allergenic ingredients shown in CAPITALS

SUPPLEMENTARY INGREDIENT INFORMATION

Palm Oil	Yes
Hydrogenated Vegetable Oil/Fat	No
GM Protein/DNA	No

ADDITIVES

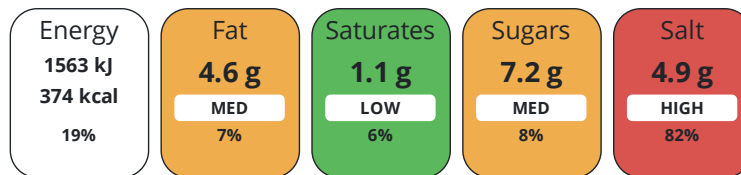
Product Contains:

Artificial Antioxidants	No	Artificial Flavourings	No
Artificial Colours	No	Artificial Preservatives	No
Artificial Flavour Enhancers	No	Artificial Sweeteners	No
Vegan Diet	Suitable for	Vegetarian Diet	Suitable for
Halal Diet	No	Kosher Diet	No

DIET SUITABILITY

NUTRITIONAL INFORMATION

Each 100g/ml portion contains:



of your reference intake.

Typical values per 100g/ml : Energy 374kcal / 1563kj

Nutrient	per 100g	RI per 100g
Energy (kJ)	1563 kJ	19%
Energy (kcal)	374 kcal	19%
Fat	4.6 g	7%
of which Saturates	1.1 g	6%
Carbohydrate	74.1 g	29%
of which Sugars	7.2 g	8%
Fibre	4.5 g	
Protein	10.7 g	21%
Salt	4.9 g	82%
Sodium	1950 mg	

SUPPLEMENTARY
NUTRITIONAL
INFORMATION

HANDLING &
STORAGE
INFORMATION

Directions For Use

Add 100ml of boiling water to 34g of sage and onion stuffing mix. Blend well to rehydrate all the raw materials, then let it stand for 10-15 mins before use. Can be rolled into balls and baked.

Storage Instructions

Cool dry and hygienic. Rapidly becomes mouldy when wet.

Storage Instructions After Opening

Transfer to airtight container or in well sealed packages.

Shelf Life from Time of Production 365 Days

BRCGS Certified

ACCREDITATIONS/
CERTIFICATIONS/
ASSURANCE
SCHEMES
ORIGIN

Product Country of Origin/Place of United Kingdom

Provenance

Standards Testing

PRODUCT
CHARACTERISTICS

Do you undertake trend analysis of microbiological results? No

Is shelf life testing undertaken? No

Commercially Sterile No

Microbiological Standards

Organism	Description	Frequency	Target	Maximum	Sample (g or ml)
Total Viable Count (TVC) (cfu/g or ml)		Annually	<50000	50000	1
E. Coli (cfu/g or ml)		Annually	<10	10	1
Salmonella (cfu/g or ml)		Annually	=0	0	25
Yeast (cfu/g or ml)		Annually	<5000	5000	1
Moulds (cfu/g or ml)		Annually	<5000	5000	1

ORGANOLEPTICS

Appearance

Beige crumb with visible onion pieces and herbs

Aroma

sage and onion

Taste

sage and onion

Texture

coarse crumb with onion and herb fragments

HAZARD CONTROLS

Metal Detection Yes **Magnets** Yes

CONFIGURATION

Case Configuration Inner Pack Configuration

Total Quantity of Inner Components in 4 Units

Outer Case

Is the Outer Case Splittable? No

PRODUCT WEIGHTS

Inner Component	
Variable Weight Consumer Item	Yes
Inner Component Weight	2 kg
Net Drained Weight	2 kg
e mark	Yes
Outer Case	
Outer Case Gross Weight	8.6 kg
Outer Case Net Weight	8 kg

PRODUCT DIMENSIONS

Inner Component	
Inner Component Depth	330 mm
Inner Component Width	130 mm
Inner Component Height	425 mm
Outer Case	
Outer Case Depth	345 mm
Outer Case Width	260 mm
Outer Case Height	220 mm

PALLET INFORMATION

Quantity of Cases Per Pallet Layer	11 Cases	Pallet Height	1.4 MTR
Quantity of Layers Per Pallet	6 Layers	Pallet Gross Weight	750 kg
Quantity of Cases Per Pallet	66 Cases		

PACKAGING

Inner Component Packaging							
Type	Materials	Weight	Recycled Plastic %	Recyclable	Returnable	Composite	
Film	Plastic / OPP (Oriented Polypropylene)	24.2 g	0 %	No	No	Yes	
Outer Case Packaging							
Type	Materials	Weight	Recycled Plastic %	Recyclable	Returnable	Composite	
Case	Paper/Cardboard	330 g	- %	Yes	No	No	
Transport Packaging							
Type	Materials	Weight	Recycled Plastic %	Recyclable	Returnable	Composite	
Other	Plastic	615 g	- %	No	No		
Other	Paper/Cardboard	150 g	- %		Yes		

MARKETING INFORMATION

Marketing Description
 Flavoursome premium stuffing mix which easily hydrates with the addition of boiling water. Can be baked, made into stuffing balls or used to stuff a bird cavity, Always remember though to increase cooking time to allow for the extra weight of the stuffing.

OTHER INFORMATION

Value Added Tax Rate	No VAT
-----------------------------	--------

CONTACT
INFORMATION

Address

Richard Whittaker Ltd
The Mayfield Centre Units 1-3
The Mayfield Centre Units 1-3
Rochdale
Greater Manchester
OL16 2UZ
England

P: (Phone) 01706 341 700

Complaints Contact

S Clegg
Quality Manager
shaun.clegg@richard-whittaker.co.uk

P: (Phone) 01706 341700

Technical Contact

Shaun Clegg
Quality Manager
shaun.clegg@richard-whittaker.co.uk

P: (Phone) 01706 341700

Commercial Contact

Paul Devenny
Sales
paul.devenny@richard-whittaker.co.uk

P: (Phone) 01706 341700

The information on the [Erudus System](#) has been supplied by the manufacturers of the products and, whilst the owners of the Erudus System take steps to ensure the information is regularly updated, they give no warranty and no guarantee that the information is accurate. Product information and ingredients may change, please always read product labels carefully in addition to using the information provided by Erudus.

We do not accept liability for any inaccuracies or incorrect information contained on this site.
Please visit <http://www.erudus.com/terms-and-conditions> for full terms and conditions.