

RECEIVED
 Thomas Ridley QC Dept.
 3:33 pm, 18 Jul 2023

The food information supplied by Thomas Ridley Foodservice has been provided by the respective product manufacturer. Whilst we use reasonable endeavours to check this information and ensure its accuracy, we do not give any warranty (whether express or implied), guarantee or representation that it is true, accurate or complete in any respect.

As product information, ingredients, nutritional guides and dietary or allergy advice may change from time to time, we recommend that you always carefully read the product label prior to using or consuming any such products. You should not solely rely upon the information we provide and make your own assessment as to the suitability or otherwise of any given product.

KitKat Chunky Hazelnut Cream 42g



EAN
3800020453513

Target market(s)
GB, IE

Components

Ingredients

- Sugar
- Vegetable Fats (Palm, Shea)
- WHEAT** Flour
- Skimmed **MILK** Powder
- Cocoa Butter
- Cocoa Mass
- Whey Powder Product (**MILK**)
- Glucose Syrup
- Butterfat (**MILK**)
- HAZELNUT** Paste (1.9%)
- Fat-Reduced Cocoa Powder
- Emulsifier (Lecithins)
- Salt
- Raising Agent (Sodium Bicarbonate)
- Flavouring

Allergy Text

May contain **PEANUTS**.

Nutrition

| | Per 100g | Per bar | % RI* |
|---------------------|----------|---------|-------|
| Energy | 2210kJ | 928kJ | |
| | 529kcal | 222kcal | 11% |
| Fat | 29.4g | 12.3g | 18% |
| of which: saturates | 15.8g | 6.7g | 34% |
| Carbohydrate | 58.6g | 24.6g | 9% |
| of which: sugars | 46.8g | 19.7g | 22% |
| Fibre | 2.0g | 0.9g | - |
| Protein | 6.2g | 2.6g | 5% |
| Salt | 0.23g | 0.10g | 2% |

*Reference Intake of an average adult (8400kJ/2000kcal)

Contains 1 serving

Portions should be adjusted for children of different ages

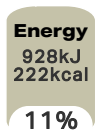
Calculated Nutrition

| | per 100g | Per bar |
|------------------------|----------|---------|
| Energy (kJ) | 2210 | 928 |
| Energy (kcal) | 529 | 222 |
| Fat (g) | 29.4 | 12.3 |
| of which saturates (g) | 15.8 | 6.7 |
| Carbohydrate (g) | 58.6 | 24.6 |
| of which sugars (g) | 46.8 | 19.7 |
| Fibre (g) | 2 | 0.9 |
| Protein (g) | 6.2 | 2.6 |
| Salt (g) | 0.23 | 0.1 |

Front of Pack Nutrition

Per Portion

Per bar



Energy per 100g: 2210kJ/529kcal

Reference Intake of an average adult (8400kJ/2000kcal)

Nutrition Other Text

Reference Intake of an average adult (8400kJ/2000kcal)

Contains 1 serving

Portions should be adjusted for children of different ages

Reference Intake Statement

Reference Intake Statement - Reference Intake of an average adult (8400kJ/2000kcal)

Product Description

Alternative Description

Supplier Preferred Product Name - Kit Kat Chunky Hazelnut Cream Chocolate Bar 42g

Brand

KitKat

Manufacturer Brand

Brand - Nestlé

Features

The crossover you just have to try!

A delicious milk chocolate bar, comprising a crispy wafer topped with a layer of hazelnut spread, wrapped in a tasty layer of smooth milk chocolate

A great treat when you are enjoying a break, a KITKAT with an extra layer of indulgence

No artificial colours, flavours or preservatives

Suitable for vegetarians

Standardised Brand

Brand - KitKat

Regulated Product Name

Crisp wafer finger with a hazelnut filling (19%) covered with thick milk chocolate (61%).

Marketing

Company Name

Nestlé Ireland

Company Address

PO Box 203,
York,
YO91 1XY,
UK.

Nestlé Ireland,
3030 Lake Drive,
Citywest Business Campus,
Dublin 24.

Third Party Logos

- Rainforest Alliance
- Tidyman

Product Marketing

The crossover you just have to try!

A delicious chocolate bar, comprising a crispy wafer topped with a layer of hazelnut spread, wrapped in a tasty layer of smooth milk chocolate

A great treat when you are enjoying a break, a KITKAT with an extra layer of indulgence

KITKAT Chunky uses sustainably sourced cocoa from the Nestle Cocoa Plan. In 2016, KITKAT celebrated becoming the first 100% globally certified sustainably sourced brand! The Nestle Cocoa Plan works with the Rainforest Alliance to ensure a better future for cocoa farmers and even better chocolate for you. Thanks to The Cocoa Plan, no matter where in the world you buy a KITKAT, you know that the cocoa used to make its delicious chocolate layer was responsibly sourced. With its perfect chocolate to wafer ratio, KITKAT is the perfect companion for any break. You can enjoy KITKAT as the iconic KITKAT 4 Finger, KITKAT Chunky, KITKAT 2 Finger and the newest addition; KITKAT Bites. So, whoever you are and however you break, Have a break, have a KITKAT®

Brand Marketing

Why not mix up your break and try KITKAT Chunky Caramel?

Other Information

Rainforest Alliance - People & Nature, Cocoa

® Reg. Trademark of Société des Produits Nestlé S.A.
Nutritional Compass®

Further Description

Nestlé®
Cocoa Plan®
Working with the Rainforest Alliance to support cocoa farmers and their communities

Rainforest Alliance Certified cocoa. Find out more at ra.org

Join us at facebook.com/kitkatuk
Share your break with #MyBreak
Check out our YouTube Channel at www.youtube.com/user/kitkat
Visit www.kitkat.co.uk
Good to remember: enjoying chocolate as part of a varied, balanced diet and a healthy lifestyle, is one of life's little pleasures"

Health & Lifestyle

Lifestyle

- Suitable for Vegetarians

Allergy Advice

Hazelnuts - Contains
Milk - Contains
Peanuts - May Contain
Wheat - Contains

Additives

Artificial Colours - Free From
Artificial Flavours - Free From
Artificial Preservatives - Free From

Storage & Usage

Storage Type

Type

Ambient

Preparation and Usage

Know Your Servings
1 Bar = 1 Serving

Storage

Store cool and dry.
For best before end and ingredients see under fin seal.

Date Marking Type

- Best Before

Brandbank Captured Pack Data

Pack Size

0.09lbs e

Numeric Size

Numeric Size - 0.09

Recycling Info

Pack - Don't Recycle

Pack Type

Type - Wrap

Recycling Scheme

- OPRL

Recycling Other Text

For ROI
Recycle at Home / Visit MYWASTE.IE

Usage Count

Number of uses - Servings

1

Usage Other Text

Contains 1 serving

Customer Services

Manufacturers Address

PO Box 203,
York,
YO91 1XY,
UK.

Nestlé Ireland,
3030 Lake Drive,
Citywest Business Campus,
Dublin 24.

Return To

Contact us free
www.nestle.co.uk
0800 604 604 (UK)
00800 6378 5385 (ROI)
PO Box 203,
York,
YO91 1XY,
UK.

Nestlé Ireland,
3030 Lake Drive,
Citywest Business Campus,
Dublin 24.

Telephone Helpline

0800 604 604 (UK)
00800 6378 5385 (ROI)

Web Address

www.nestle.co.uk

Social Media

#mybreak Twitter, Facebook

Extended Data

Description Breakdown

Variant - Hazelnut Cream

