


Changed Apr 05, 2024 13:40

Reviewed Apr 05, 2024 13:40

Erudus ID efe207395633430a9d34d26d526671f9

Version 2.0



**RECEIVED**  
Thomas Ridley QC Dept.  
10:45 am, 11 Apr 2024

The food information supplied by Thomas Ridley Foodservice has been provided by the respective product manufacturer. Whilst we use reasonable endeavours to check this information and ensure its accuracy, we do not give any warranty (whether express or implied), guarantee or representation that it is true, accurate or complete in any respect.

As product information, ingredients, nutritional guides and dietary or allergy advice may change from time to time, we recommend that you always carefully read the product label prior to using or consuming any such products. You should not solely rely upon the information we provide and make your own assessment as to the suitability or otherwise of any given product.



11319

# Caterfood Select Chopped Tomatoes 6 x 2.5kg

Chopped Tomatoes 6x2.5kg

## PRODUCT DESCRIPTION

Caterfood Select Chopped Tomatoes 6 x 2.5kg

<b>Brand</b>	Caterfood Buying Group
<b>Manufacturer Product Code</b>	40127000
<b>Product Type</b>	Food
<b>Product Category</b>	Fruit - Canned
<b>Storage Type</b>	Ambient
<b>Erudus ID</b>	efe207395633430a9d34d26d526671f9
<b>Specification Type</b>	Fruit and Vegetables
<b>Inner Component GTIN</b>	5060158877201
<b>Outer Case GTIN</b>	5056750400084



## INGREDIENTS

### Ingredient Declaration

Tomatoes, Tomato Juice, Acidity Regulator (Citric Acid)

## ALLERGENS

Product Contains:

<b>Celery/Celeriac</b>	No	<b>Mustard</b>	No
<b>Cereals Containing Gluten</b>	No	<b>Nuts (Tree)</b>	No
<b>Barley</b>	No	<b>Almond nuts</b>	No
<b>Oats</b>	No	<b>Brazil nuts</b>	No
<b>Rye</b>	No	<b>Cashew nuts</b>	No
<b>Wheat (including Spelt and Khorasan)</b>	No	<b>Hazelnuts</b>	No
<b>Crustacea</b>	No	<b>Macadamia (Queensland) nuts</b>	No
<b>Eggs</b>	No	<b>Pecan nuts</b>	No
<b>Fish</b>	No	<b>Pistachio nuts</b>	No
<b>Lupin</b>	No	<b>Walnuts</b>	No
<b>Milk</b>	No	<b>Peanuts</b>	No
<b>Molluscs</b>	No	<b>Sesame Seeds</b>	No
		<b>Soybeans</b>	No
		<b>Sulphur Dioxide and Sulphites</b>	No

### Additional Allergen Information

Please note whilst the product contains no gluten containing ingredients this product is not sold as 'gluten free' as its positively released Please note whilst the product contains no ingredients not vegan suitable / lactose intolerance this product isn't positively released as 'vegan' / 'lactose free' Product is suitable for halal diet and kosher diet but may not be formally certified.

## SUPPLEMENTARY INGREDIENT INFORMATION

<b>Palm Oil</b>	No
<b>Hydrogenated Vegetable Oil/Fat</b>	No
<b>GM Protein/DNA</b>	No

ADDITIVES

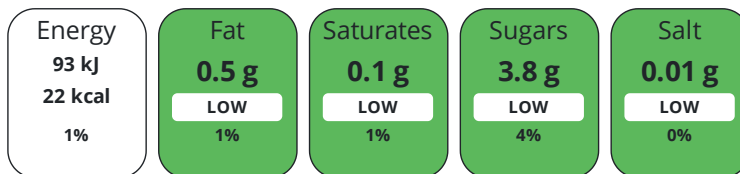
Product Contains:

<b>Artificial Antioxidants</b>	No	<b>Artificial Flavourings</b>	No
<b>Artificial Colours</b>	No	<b>Artificial Preservatives</b>	No
<b>Artificial Flavour Enhancers</b>	No	<b>Artificial Sweeteners</b>	No
<b>Vegan Diet</b>	Suitable for	<b>Vegetarian Diet</b>	Suitable for
<b>Halal Diet</b>	No	<b>Kosher Diet</b>	No

DIET SUITABILITY

NUTRITIONAL INFORMATION

Each 100g/ml portion contains:



of your reference intake.

Typical values per 100g/ml : Energy 22kcal / 93kj

Nutrient	per 100g	RI per 100g	per 100g serving	RI per 100g serving
<b>Energy (kJ)</b>	93 kJ	1%	93 kJ	1%
<b>Energy (kcal)</b>	22 kcal	1%	22 kcal	1%
<b>Fat</b>	< 0.5 g	1%	0.5 g	1%
<b>of which Saturates</b>	< 0.1 g	1%	0.1 g	1%
<b>of which Mono-unsaturates</b>	< 0.1 g		0.1 g	
<b>of which Polyunsaturates</b>	< 0.1 g		0.1 g	
<b>Carbohydrate</b>	3.8 g	1%	3.8 g	1%
<b>of which Sugars</b>	3.8 g	4%	3.8 g	4%
<b>Fibre</b>	0.8 g		0.8 g	
<b>Protein</b>	1.1 g	2%	1.1 g	2%
<b>Salt</b>	< 0.01 g	0%	-	

**Serving Size** 100 g

**Source of Nutritional Information** Calculation from known/accepted datasets

SUPPLEMENTARY NUTRITIONAL INFORMATION

HANDLING & STORAGE INFORMATION

**Directions For Use**

Empty Can and heat as required

**Storage Instructions**

Store in a cool dry place

**Shelf Life from Time of Production** 1065 Days

**Exempt From Shelf Life Labelling** No

**BRCGS Certified**

**BRCGS Food Safety**

ACCREDITATIONS/ CERTIFICATIONS/ ASSURANCE SCHEMES ORIGIN

**Product Country of Origin/Place of** Italy

**Provenance**

**Additional Origin Details**

Italy

PRODUCT CHARACTERISTICS

Standards Testing

Commercially Sterile

Yes

Analytical Standards

Test	Description	Frequency	Target	Range	Sample (g or ml)
Brix (°Bx)		Every Batch	=5.5	5 to 6	2500
pH		Every Batch	=4.3	4.1 to 4.5	2500

ORGANOLEPTICS

<b>Appearance</b>	Canned chopped tomatoes
<b>Aroma</b>	Typical of ripe tomatoes. No off flavours.
<b>Taste</b>	Typical of tomato
<b>Texture</b>	Firm tomatoes

CONFIGURATION

Case Configuration

Inner Pack Configuration

<b>Variable Inner Components in Outer Case</b>	No
<b>Total Quantity of Inner Components in Outer Case</b>	6 Units
<b>Is the Outer Case Splittable?</b>	No

PRODUCT WEIGHTS

Inner Component

<b>Variable Weight Consumer Item</b>	No
<b>Inner Component Weight</b>	2.5 kg
<b>Net Drained Weight</b>	1.5 kg
<b>e mark</b>	Yes

Outer Case

<b>Outer Case Gross Weight</b>	16.5 kg
<b>Outer Case Net Weight</b>	15 kg

PRODUCT DIMENSIONS

Inner Component

<b>Inner Component Depth</b>	153 mm
<b>Inner Component Width</b>	153 mm
<b>Inner Component Height</b>	152 mm

Outer Case

<b>Outer Case Depth</b>	460 mm
<b>Outer Case Width</b>	310 mm
<b>Outer Case Height</b>	155 mm

PALLET INFORMATION

<b>Quantity of Cases Per Pallet Layer</b>	9 Cases	<b>Pallet Height</b>	1.2 MTR
<b>Quantity of Layers Per Pallet</b>	7 Layers	<b>Pallet Gross Weight</b>	1067 kg
<b>Quantity of Cases Per Pallet</b>	63 Cases		

PACKAGING

Inner Component Packaging

Type	Materials	Weight	Recycled Plastic %	Recyclable	Returnable	Composite
Label	Paper/Cardboard / Paper	3 g	- %	Yes	No	No
Can	Steel	242 g	- %	Yes	No	No

#### Outer Case Packaging

Type	Materials	Weight	Recycled Plastic %	Recyclable	Returnable	Composite
Shrink Wrap	Plastic	35 g	0.00 %	No	No	No
Case	Paper/Cardboard / Cardboard	105 g	- %	Yes	No	No

#### Transport Packaging

Type	Materials	Weight	Recycled Plastic %	Recyclable	Returnable	Composite
Pallet Wrap	Plastic	200 g	- %			
Pallet	Wood	28000 g	- %			

#### OTHER INFORMATION

##### Manufacturer Comments

Orders times and minimum orders may change depending on commercial agreements

#### CONTACT INFORMATION

##### Address

Kiril Mischeff Ltd  
Enterprise House  
Carlton Road  
Worksop  
Notts  
S81 7QF  
England

P: (Phone) 01909 534 000

The information on the [Erudus System](#) has been supplied by the manufacturers of the products and, whilst the owners of the Erudus System take steps to ensure the information is regularly updated, they give no warranty and no guarantee that the information is accurate. Product information and ingredients may change, please always read product labels carefully in addition to using the information provided by Erudus.

We do not accept liability for any inaccuracies or incorrect information contained on this site.  
Please visit <http://www.erudus.com/terms-and-conditions> for full terms and conditions.