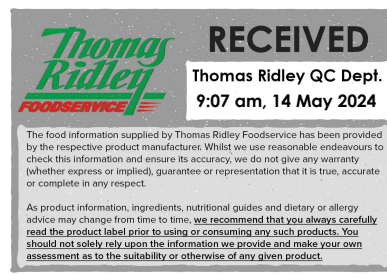


**Changed** May 13, 2024 15:07  
**Reviewed** May 13, 2024 15:07  
**Erudus ID** 7301c753b27d4fd6be6867d1f1a94802  
**Version** 2.0



This specification is published by [Erudus](#) for Caterfood Buying Group

11322

# The Caterfood Collection Choice Peas 4 x 2.5 kg

Choice Peas 4x2.5kg

## PRODUCT DESCRIPTION

Frozen Choice Peas

<b>Brand</b>	Caterfood Buying Group
<b>Label Own Label Code</b>	C20017
<b>Effective Date</b>	May 13, 2024
<b>Product Type</b>	Food
<b>Product Category</b>	Vegetables - Frozen
<b>Storage Type</b>	Frozen
<b>Erudus ID</b>	7301c753b27d4fd6be6867d1f1a94802
<b>Specification Type</b>	Fruit and Vegetables
<b>Inner Component GTIN</b>	5060158878444
<b>Outer Case GTIN</b>	5060158877256



## INGREDIENTS

### Ingredient Declaration

Peas

## ALLERGENS

Product Contains:

<b>Celery/Celeriac</b>	No
<b>Cereals Containing Gluten</b>	No
<b>Barley</b>	No
<b>Oats</b>	No
<b>Rye</b>	No
<b>Wheat (including Spelt and Khorasan)</b>	No
<b>Crustacea</b>	No
<b>Eggs</b>	No
<b>Fish</b>	No
<b>Lupin</b>	No
<b>Milk</b>	No
<b>Molluscs</b>	No
<b>Mustard</b>	No
<b>Nuts (Tree)</b>	No
<b>Almond nuts</b>	No
<b>Brazil nuts</b>	No
<b>Cashew nuts</b>	No
<b>Hazelnuts</b>	No
<b>Macadamia (Queensland) nuts</b>	No
<b>Pecan nuts</b>	No
<b>Pistachio nuts</b>	No
<b>Walnuts</b>	No
<b>Peanuts</b>	No
<b>Sesame Seeds</b>	No
<b>Soybeans</b>	No
<b>Sulphur Dioxide and Sulphites</b>	No

SUPPLEMENTARY INGREDIENT INFORMATION

<b>Palm Oil</b>	No
<b>Hydrogenated Vegetable Oil/Fat</b>	No
<b>GM Protein/DNA</b>	No

ADDITIVES

Product Contains:

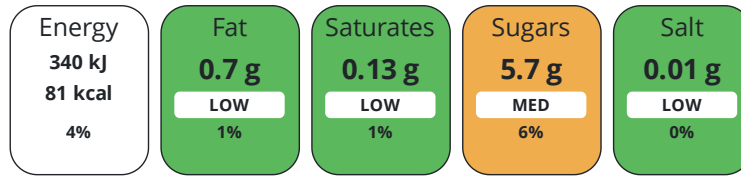
<b>Artificial Antioxidants</b>	No
<b>Artificial Colours</b>	No
<b>Artificial Flavour Enhancers</b>	No
<b>Artificial Flavourings</b>	No
<b>Artificial Preservatives</b>	No
<b>Artificial Sweeteners</b>	No

DIET SUITABILITY

<b>Vegan Diet</b>	Suitable for	<b>Vegetarian Diet</b>	Suitable for
<b>Halal Diet</b>	No	<b>Kosher Diet</b>	No

NUTRITIONAL INFORMATION

Each 100g/ml portion contains:



of your reference intake.

Typical values per 100g/ml : Energy 81kcal / 340kj

Nutrient	per 100g	RI per 100g	per 80g serving	RI per 80g serving
Energy (kJ)	340 kJ	4%	272 kJ	3%
Energy (kcal)	81 kcal	4%	64.8 kcal	3%
Fat	0.7 g	1%	0.6 g	1%
of which Saturates	0.13 g	1%	0.1 g	1%
of which Mono-unsaturates	< 0.1 g		0.1 g	
of which Polyunsaturates	0.36 g		0.3 g	
Carbohydrate	10.7 g	4%	8.6 g	3%
of which Sugars	5.7 g	6%	4.6 g	5%
Fibre	5.3 g		4.2 g	
Protein	5.3 g	11%	4.2 g	8%
Salt	0.01 g	0%	-	
Sodium	4 mg		3.2 mg	
<b>Serving Size</b>			80 g	
<b>Number of Servings</b>			31 Servings	

#### VITAMINS AND MINERALS

Nutrient	per 100g	RI per 100g	per 80g serving	RI per 80g serving
Vitamin A	44 µg	6%	35.2 µg	4%
Vitamin C	22 mg	28%	17.6 mg	22%
Thiamin (B1)	0.6 mg	55%	0.5 mg	45%
Riboflavin (B2)	0.08 mg	6%	0.1 mg	7%
Niacin (B3)	2.3 mg	14%	1.8 mg	11%
Calcium	36 mg	5%	28.8 mg	4%
Magnesium	26 mg	7%	20.8 mg	6%
Iron	1.75 mg	13%	1.4 mg	10%
Zinc	0.8 mg	8%	0.6 mg	6%

#### SUPPLEMENTARY NUTRITIONAL INFORMATION

## HANDLING &amp; STORAGE INFORMATION

**Directions For Use**

Place 80g of peas and 1 tablespoon of water in a microwaveable covered dish. Cook on full power (1000Watt) for 1 minute. Stir and reheat for another 2.5 minutes. Boiling water: Add 400g of frozen vegetables in boiling water. Bring back to the boil, cover and simmer for 3-4 minutes until tender

**Storage Instructions**

STORE AT -18°C OR BELOW DO NOT REFREEZE ONCE DEFROSTED

**Shelf Life from Time of Production**

913 Days

**Exempt From Shelf Life Labelling**

No

## ACCREDITATIONS/ CERTIFICATIONS/ ASSURANCE SCHEMES

**BRCGS Certified****IFS Food Standard****ISO 14001 (Environmental Management)**

## ORIGIN

**Product Country of Origin/Place of**

Belgium, France, Netherlands (the)

**Provenance****Additional Origin Details**

n/a

## PRODUCT CHARACTERISTICS

## Standards Testing

**Do you undertake trend analysis of microbiological results?**

Yes

**Is shelf life testing undertaken?**

Yes

## CONFIGURATION

## Case Configuration

**Total Quantity of Inner Components in Outer Case**

4 Units

## Inner Pack Configuration

## PRODUCT WEIGHTS

## Inner Component

**Variable Weight Consumer Item**

No

**Inner Component Weight**

2.5 kg

## Outer Case

**Outer Case Gross Weight**

10.25 kg

**Outer Case Net Weight**

10 kg

## PRODUCT DIMENSIONS

## Inner Component

**Inner Component Depth**

300 mm

**Inner Component Width**

360 mm

**Inner Component Height**

50 mm

## Outer Case

**Outer Case Depth**

372 mm

**Outer Case Width**

242 mm

**Outer Case Height**

181 mm

## PALLET INFORMATION

**Quantity of Cases Per Pallet Layer**

12 Cases

**Quantity of Layers Per Pallet**

8 Layers

**Quantity of Cases Per Pallet**

96 Cases

**Pallet Height**

1.61 MTR

**Pallet Gross Weight**

1009 kg

## PACKAGING

#### Inner Component Packaging

Type	Materials	Weight	Recycled Plastic %	Recyclable	Returnable	Composite
Bag	Plastic / LDPE (Low Density Polyethylene)	9.16 g	- %			

#### Outer Case Packaging

Type	Materials	Weight	Recycled Plastic %	Recyclable	Returnable	Composite
Case	Paper/Cardboard / Corrugated	211.88 g	- %			
Tape	Plastic / PP (Polypropylene)	1.1 g	- %			
Label	Paper/Cardboard	0.8 g	- %			

#### Transport Packaging

Type	Materials	Weight	Recycled Plastic %	Recyclable	Returnable	Composite
Pallet	Wood	25000 g	- %			
Label	Paper/Cardboard	5.7 g	- %			
Pallet Wrap	Plastic / LDPE (Low Density Polyethylene)	160 g	- %			

#### OTHER INFORMATION

#### CONTACT INFORMATION

##### ADDRESS

Caterfood Buying Group  
BFS Group Ltd  
814 Leigh Road  
Slough  
Berkshire  
SL1 4BD  
United Kingdom

The information on the [Erudus System](#) has been supplied by the manufacturers of the products and, whilst the owners of the Erudus System take steps to ensure the information is regularly updated, they give no warranty and no guarantee that the information is accurate. Product information and ingredients may change, please always read product labels carefully in addition to using the information provided by Erudus.

We do not accept liability for any inaccuracies or incorrect information contained on this site.  
Please visit <http://www.erudus.com/terms-and-conditions> for full terms and conditions.