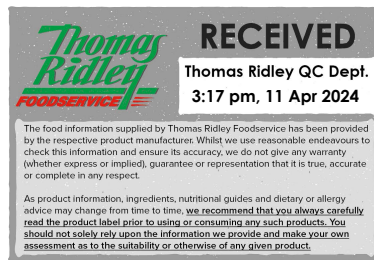


Changed Apr 05, 2024 14:35

Erudus ID 5c49e257dc1c485094bf5d819a66bce8

Version 1.1

This specification is published by [Erudus](#) for Caterfood Buying Group



11383

# Caterfood Essentials Easy Cook Basmati Rice 5kg

Caterfood Essentials Easy Cook Basmati Rice 5kg

## PRODUCT DESCRIPTION

Sound, off white, cream-coloured grains of parboiled long grain Basmati rice grown from the plant *Oryza Sativa*.

Brand	Caterfood Buying Group
Label Own Label Code	C10020
Product Type	Food
Product Category	Pasta, Rice and Noodles
Storage Type	Ambient
Erudus ID	5c49e257dc1c485094bf5d819a66bce8
Specification Type	Legacy
Outer Case GTIN	5060158877270



## INGREDIENTS

### Ingredient Declaration

Easy Cook Basmati Rice

## ALLERGENS

*Product Contains:*

<b>Celery/Celeriac</b>	No	<b>Mustard</b>	No
<b>Cereals Containing Gluten</b>	No	<b>Nuts (Tree)</b>	No
<b>Barley</b>	No	<b>Almond nuts</b>	No
<b>Oats</b>	No	<b>Brazil nuts</b>	No
<b>Rye</b>	No	<b>Cashew nuts</b>	No
<b>Wheat (including Spelt and Khorasan)</b>	No	<b>Hazelnuts</b>	No
<b>Crustacea</b>	No	<b>Macadamia (Queensland) nuts</b>	No
<b>Eggs</b>	No	<b>Pecan nuts</b>	No
<b>Fish</b>	No	<b>Pistachio nuts</b>	No
<b>Lupin</b>	No	<b>Walnuts</b>	No
<b>Milk</b>	No	<b>Peanuts</b>	No
<b>Molluscs</b>	No	<b>Sesame Seeds</b>	No
		<b>Soybeans</b>	No
		<b>Sulphur Dioxide and Sulphites</b>	No

## SUPPLEMENTARY INGREDIENT INFORMATION

<b>Palm Oil</b>	No
<b>Hydrogenated Vegetable Oil/Fat</b>	No
<b>GM Protein/DNA</b>	No

ADDITIVES

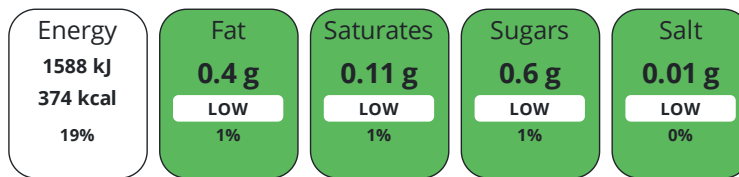
Product Contains:

<b>Artificial Antioxidants</b>	No	<b>Artificial Flavourings</b>	No
<b>Artificial Colours</b>	No	<b>Artificial Preservatives</b>	No
<b>Artificial Flavour Enhancers</b>	No	<b>Artificial Sweeteners</b>	No
<b>Suitable for Coeliacs</b>	No	<b>Halal Diet</b>	No
<b>Kosher Diet</b>	No	<b>Vegetarian Diet</b>	Suitable for
<b>Vegan Diet</b>	Suitable for		

DIET SUITABILITY

NUTRITIONAL INFORMATION

Each 100g/ml portion contains:



of your reference intake.

Typical values per 100g/ml : Energy 374kcal / 1588kj

Nutrient	per 100g/ml	RI per 100g/ml	per 50g/ml serving	RI per 50g/ml serving
<b>Energy (kJ)</b>	1588 kJ	19%	794 kJ	9%
<b>Energy (kcal)</b>	374 kcal	19%	187 kcal	9%
<b>Fat</b>	0.4 g	1%	0.2 g	0%
of which Saturates	0.11 g	1%	0.1 g	1%
of which Mono-unsaturates	0.11 g		0.1 g	
of which Polyunsaturates	0.14 g		0.1 g	
<b>Carbohydrate</b>	83.8 g	32%	41.9 g	16%
of which Sugars	0.6 g	1%	0.3 g	0%
<b>Fibre</b>	1.4 g		0.7 g	
<b>Protein</b>	8.1 g	16%	4.1 g	8%
<b>Salt</b>	< 0.01 g	0%	-	
<b>Sodium</b>	< 0.01 mg		-	
<b>Serving Size</b>	50 g			

VITAMINS AND MINERALS

Nutrient	per 100g/ml	RI per 100g/ml	per 50g/ml serving	RI per 50g/ml serving
<b>Vitamin A</b>	0 µg	0%	-	
<b>Vitamin C</b>	0 mg	0%	-	
<b>Folate/Folic Acid</b>	20 µg	10%	10 µg	5%
<b>Calcium</b>	23 mg	3%	11.5 mg	1%
<b>Iron</b>	0.9 mg	6%	0.5 mg	4%
<b>Zinc</b>	0.8 mg	8%	0.4 mg	4%

SUPPLEMENTARY NUTRITIONAL INFORMATION

HANDLING &  
STORAGE  
INFORMATION

**Directions For Use**

Boil - High heat reducing down to low - 15 - 18 minutes Bring a large uncovered pan of cold water to boil. Add 50 - 75g of rice per person and return water to boil. Reduce heat and simmer for time stated above until cooked. Drain through a sieve and serve.

**Storage Instructions**

Store in a cool, dry place

**Shelf Life from Time of Production** 730 Days

ACCREDITATIONS/  
CERTIFICATIONS/  
ASSURANCE  
SCHEMES  
ORIGIN

**BRCGS Certified**

**Product Country of Origin/Place of** India

**Provenance**

**Additional Origin Details**

Pakistan

PRODUCT  
CHARACTERISTICS

Standards Testing

**Do you undertake trend analysis of microbiological results?** Yes

**Is shelf life testing undertaken?** Yes

CONFIGURATION

Case Configuration

Inner Pack Configuration

**Total Quantity of Inner Components in** 1 Units

**Outer Case**

**Is the Outer Case Splittable?** No

PRODUCT  
WEIGHTS

Inner Component

**Variable Weight Consumer Item** No

**Weight/Volume**

5kg

Outer Case

**Outer Case Gross Weight** 5.05 kg

**Outer Case Net Weight** 5 kg

PRODUCT  
DIMENSIONS

Inner Component

**Inner Component Depth** 480 mm

**Inner Component Width** 110 mm

**Inner Component Height** 230 mm

Outer Case

**Outer Case Depth** 480 mm

**Outer Case Width** 230 mm

**Outer Case Height** 110 mm

PALLET  
INFORMATION

**Quantity of Cases Per Pallet Layer** 14 Cases

**Pallet Height** 1.3 MTR

**Quantity of Layers Per Pallet** 15 Layers

**Pallet Gross Weight** 1090 kg

**Quantity of Cases Per Pallet** 210 Cases

PACKAGING

Inner Component Packaging

Type	Materials	Weight	Recycled Plastic %	Recyclable	Returnable	Composite
Bag	Paper/Cardboard	56 g	- %			

Outer Case Packaging

Type	Materials	Weight	Recycled Plastic %	Recyclable	Returnable	Composite
	Paper/Cardboard	56 g	- %			

Transport Packaging

Type	Materials	Weight	Recycled Plastic %	Recyclable	Returnable	Composite
Other	Plastic	3.8 g	0.00 %			
Other	Paper/Cardboard	3 g	- %			
Other	Wood	30000 g	- %			

OTHER INFORMATION

**Commodity Code** 10063067

CONTACT INFORMATION

ADDRESS

Caterfood Buying Group  
 BFS Group Ltd  
 814 Leigh Road  
 Slough  
 Berkshire  
 SL1 4BD  
 United Kingdom

The information on the [Erudus System](#) has been supplied by the manufacturers of the products and, whilst the owners of the Erudus System take steps to ensure the information is regularly updated, they give no warranty and no guarantee that the information is accurate. Product information and ingredients may change, please always read product labels carefully in addition to using the information provided by Erudus.

We do not accept liability for any inaccuracies or incorrect information contained on this site.  
 Please visit <http://www.erudus.com/terms-and-conditions> for full terms and conditions.