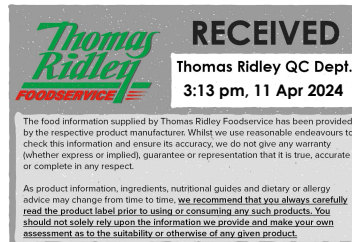


Changed Apr 05, 2024 14:39

Erudus ID 25ad06e8805d4bc68a2cc204a826c998

Version 1.1

This specification is published by [Erudus](#) for Caterfood Buying Group



11384

# Caterfood Essentials Easy Cook Long Grain Rice 5kg

Caterfood Essentials Easy Cook Long Grain Rice 5kg

## PRODUCT DESCRIPTION

Sound, off white, cream-coloured grains of parboiled long grain rice grown from the plant Oryza Sativa.

Brand	Caterfood Buying Group
Label Own Label Code	C10019
Product Type	Food
Product Category	Pasta, Rice and Noodles
Storage Type	Ambient
Erudus ID	25ad06e8805d4bc68a2cc204a826c998
Specification Type	Legacy
Outer Case GTIN	5060158877287



## INGREDIENTS

### Ingredient Declaration

Easy Cook Long Grain Rice

## ALLERGENS

Product Contains:

<b>Celery/Celeriac</b>	No	<b>Mustard</b>	No
<b>Cereals Containing Gluten</b>	No	<b>Nuts (Tree)</b>	No
<b>Barley</b>	No	<b>Almond nuts</b>	No
<b>Oats</b>	No	<b>Brazil nuts</b>	No
<b>Rye</b>	No	<b>Cashew nuts</b>	No
<b>Wheat (including Spelt and Khorasan)</b>	No	<b>Hazelnuts</b>	No
<b>Crustacea</b>	No	<b>Macadamia (Queensland) nuts</b>	No
<b>Eggs</b>	No	<b>Pecan nuts</b>	No
<b>Fish</b>	No	<b>Pistachio nuts</b>	No
<b>Lupin</b>	No	<b>Walnuts</b>	No
<b>Milk</b>	No	<b>Peanuts</b>	No
<b>Molluscs</b>	No	<b>Sesame Seeds</b>	No
		<b>Soybeans</b>	No
		<b>Sulphur Dioxide and Sulphites</b>	No

## SUPPLEMENTARY INGREDIENT INFORMATION

<b>Palm Oil</b>	No
<b>Hydrogenated Vegetable Oil/Fat</b>	No
<b>GM Protein/DNA</b>	No

## ADDITIVES

Product Contains:

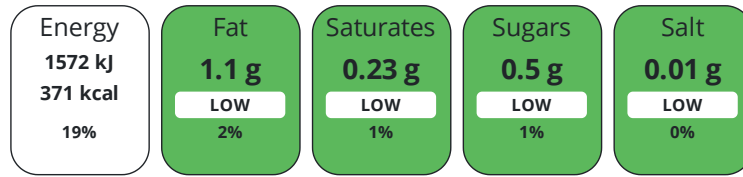
<b>Artificial Antioxidants</b>	No	<b>Artificial Flavourings</b>	No
<b>Artificial Colours</b>	No	<b>Artificial Preservatives</b>	No
<b>Artificial Flavour Enhancers</b>	No	<b>Artificial Sweeteners</b>	No

DIET  
SUITABILITY

<b>Suitable for Coeliacs</b>	No	<b>Halal Diet</b>	No
<b>Kosher Diet</b>	No	<b>Vegetarian Diet</b>	Suitable for
<b>Vegan Diet</b>	Suitable for		

NUTRITIONAL  
INFORMATION

Each 100g/ml portion contains:



of your reference intake.

Typical values per 100g/ml : Energy 371kcal / 1572kJ

Nutrient	per 100g/ml	RI per 100g/ml	per 50g/ml serving	RI per 50g/ml serving
<b>Energy (kJ)</b>	1572 kJ	19%	786 kJ	9%
<b>Energy (kcal)</b>	371 kcal	19%	185.5 kcal	9%
<b>Fat</b>	1.1 g	2%	0.6 g	1%
<b>of which Saturates</b>	0.23 g	1%	0.1 g	1%
<b>of which Mono-unsaturates</b>	0.32 g		0.2 g	
<b>of which Polyunsaturates</b>	0.36 g		0.2 g	
<b>Carbohydrate</b>	82.3 g	32%	41.2 g	16%
<b>of which Sugars</b>	< 0.5 g	1%	0.3 g	0%
<b>Fibre</b>	1.7 g		0.9 g	
<b>Protein</b>	7 g	14%	3.5 g	7%
<b>Salt</b>	< 0.01 g	0%	-	
<b>Sodium</b>	< 0.01 mg		-	

**Serving Size** 50 g

VITAMINS AND  
MINERALS

Nutrient	per 100g/ml	RI per 100g/ml	per 50g/ml serving	RI per 50g/ml serving
<b>Vitamin A</b>	0 µg	0%	-	
<b>Vitamin C</b>	0 mg	0%	-	
<b>Folate/Folic Acid</b>	18 µg	9%	9 µg	5%
<b>Calcium</b>	23 mg	3%	11.5 mg	1%
<b>Iron</b>	0.37 mg	3%	0.2 mg	1%
<b>Zinc</b>	1.1 mg	11%	0.6 mg	6%

SUPPLEMENTARY  
NUTRITIONAL  
INFORMATION

HANDLING &  
STORAGE  
INFORMATION

**Directions For Use**

Boil - High heat reducing down to low - 15 -18 mins. Bring a large, uncovered pan of cold water to boil. Add 50g - 75g of rice per person and return water to boil. Reduce heat and simmer for time stated above until cooked. Drain through a sieve and serve.

**Storage Instructions**

Store in a cool, dry place

**Shelf Life from Time of Production** 730 Days

ACCREDITATIONS/  
CERTIFICATIONS/  
ASSURANCE  
SCHEMES  
ORIGIN

**BRCGS Certified**

**Other Accreditation**

**Product Country of Origin/Place of** United States of America

**Provenance**

**Additional Origin Details**

EU (Greece/Spain), South America (Argentina / Brazil / Paraguay / Uruguay), India, Thailand, Myanmar

PRODUCT  
CHARACTERISTICS

Standards Testing

**Do you undertake trend analysis of microbiological results?** Yes

**Is shelf life testing undertaken?** Yes

CONFIGURATION

Case Configuration

Inner Pack Configuration

**Total Quantity of Inner Components in Outer Case** 1 Units

**Is the Outer Case Splittable?** No

PRODUCT  
WEIGHTS

Inner Component

**Variable Weight Consumer Item** No

**Weight/Volume**

5kg

Outer Case

**Outer Case Gross Weight** 5.05 kg

**Outer Case Net Weight** 5 kg

PRODUCT  
DIMENSIONS

Inner Component

**Inner Component Depth** 480 mm

**Inner Component Width** 110 mm

**Inner Component Height** 230 mm

Outer Case

**Outer Case Depth** 480 mm

**Outer Case Width** 230 mm

**Outer Case Height** 110 mm

PALLET  
INFORMATION

**Quantity of Cases Per Pallet Layer** 14 Cases

**Pallet Height** 1.3 MTR

**Quantity of Layers Per Pallet** 15 Layers

**Pallet Gross Weight** 1090 kg

**Quantity of Cases Per Pallet** 210 Cases

PACKAGING

Inner Component Packaging

Type	Materials	Weight	Recycled Plastic %	Recyclable	Returnable	Composite
Bag	Paper/Cardboard	56 g	- %			

Outer Case Packaging

Type	Materials	Weight	Recycled Plastic %	Recyclable	Returnable	Composite
	Paper/Cardboard	56 g	- %			

Transport Packaging

Type	Materials	Weight	Recycled Plastic %	Recyclable	Returnable	Composite
Other	Plastic	3.8 g	0.00 %			
Other	Paper/Cardboard	3 g	- %			
Other	Wood	30000 g	- %			

OTHER  
INFORMATION

**Commodity Code** 10063067

CONTACT  
INFORMATION

ADDRESS

Caterfood Buying Group  
BFS Group Ltd  
814 Leigh Road  
Slough  
Berkshire  
SL1 4BD  
United Kingdom

The information on the [Erudus System](#) has been supplied by the manufacturers of the products and, whilst the owners of the Erudus System take steps to ensure the information is regularly updated, they give no warranty and no guarantee that the information is accurate. Product information and ingredients may change, please always read product labels carefully in addition to using the information provided by Erudus.

We do not accept liability for any inaccuracies or incorrect information contained on this site.  
Please visit <http://www.erudus.com/terms-and-conditions> for full terms and conditions.