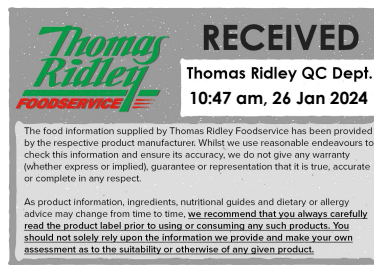


Changed Jan 25, 2024 15:03

Reviewed Jan 25, 2024 15:03

Erudus ID ba8e287087b6436f99f26560649384ad

Version 2.0



Thomas Ridley
FOODSERVICE

RECEIVED
Thomas Ridley QC Dept.
10:47 am, 26 Jan 2024

The food information supplied by Thomas Ridley Foodservice has been provided by the respective product manufacturer. Whilst we use reasonable endeavours to check this information and ensure its accuracy, we do not give any warranty (whether express or implied), guarantee or representation that it is true, accurate or complete in any respect.

As product information, ingredients, nutritional guides and dietary or allergy advice may change from time to time, we recommend that you always carefully read the product label prior to using or consuming any such products. You should not solely rely upon the information we provide and make your own assessment as to the suitability or otherwise of any given product.



Milkybar Mix-in 8 x 400g

Milkybar Mix-in 400g 8x400g

PRODUCT DESCRIPTION

White chocolate chips

Brand	Nestle UK
Manufacturer Product Code	12459812
Product Type	Food
Product Category	Confectionery
Storage Type	Ambient
Erudus ID	ba8e287087b6436f99f26560649384ad
Specification Type	Generic



Inner Component GTIN	7613287139894
Outer Case GTIN	7613287140401



INGREDIENTS

Ingredient Declaration

MILK powders (Whole and Skimmed), Sugar, Cocoa butter, Vegetable fat (Palm/ Shea/mango kernel/Sal), Emulsifier (Lecithins), Natural flavouring.

ALLERGENS

Product Contains:

Celery/Celериac	No	Mustard	No
Cereals Containing Gluten	No	Nuts (Tree)	No
Barley	No	Almond nuts	No
Oats	No	Brazil nuts	No
Rye	No	Cashew nuts	No
Wheat (including Spelt and Khorasan)	No	Hazelnuts	No
Crustacea	No	Macadamia (Queensland) nuts	No
Eggs	No	Pecan nuts	No
Fish	No	Pistachio nuts	No
Lupin	No	Walnuts	No
Milk	Yes	Peanuts	No
Molluscs	No	Sesame Seeds	No
		Soybeans	No
		Sulphur Dioxide and Sulphites	No

Additional Allergen Information

Contains: MILK.

SUPPLEMENTARY INGREDIENT INFORMATION

Palm Oil	Yes
GM Protein/DNA	No

ADDITIVES

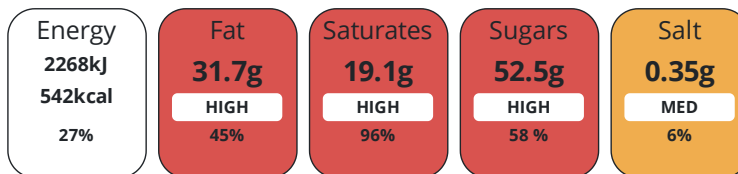
Product Contains:

Artificial Antioxidants	No	Artificial Flavourings	No
Artificial Colours	No	Artificial Preservatives	No
Artificial Flavour Enhancers	No	Artificial Sweeteners	No
Vegan Diet	No	Vegetarian Diet	Suitable for
Halal Diet	Suitable for	Kosher Diet	No

DIET SUITABILITY

NUTRITIONAL INFORMATION

Each 100g/ml portion contains:



of your reference intake.

Typical values per 100g/ml : Energy 542kcal / 2268kj

Nutrient	per 100g	RI per 100g
Energy (kj)	2268 kj	27%
Energy (kcal)	542 kcal	27%
Fat	31.7 g	45%
of which Saturates	19.1 g	96%
Carbohydrate	52.9 g	20%
of which Sugars	52.5 g	58%
Fibre	0 g	
Protein	10.8 g	22%
Salt	0.35 g	6%

SUPPLEMENTARY NUTRITIONAL INFORMATION

HANDLING & STORAGE INFORMATION

Directions For Use

Ready to eat.

Storage Instructions

Store cool and dry.

Shelf Life from Time of Production	304 Days	Exempt From Shelf Life Labelling	No
---	----------	---	----

ACCREDITATIONS/ CERTIFICATIONS/ ASSURANCE SCHEMES



ORIGIN

Product Country of Origin/Place of United Kingdom

Provenance

PRODUCT CHARACTERISTICS

Standards Testing

Do you undertake trend analysis of microbiological results?	No	Is shelf life testing undertaken?	No
--	----	--	----

CONFIGURATION

Case Configuration Inner Pack Configuration

Total Quantity of Inner Components in Outer Case 8 Units

PRODUCT WEIGHTS

Inner Component	
Variable Weight Consumer Item	No
Inner Component Weight	400 g
Outer Case	
Outer Case Gross Weight	3.52 kg
Outer Case Net Weight	3.2 kg

PRODUCT DIMENSIONS

Inner Component	
Inner Component Depth	20 mm
Inner Component Width	150 mm
Inner Component Height	100 mm
Outer Case	
Outer Case Depth	300 mm
Outer Case Width	230 mm
Outer Case Height	170 mm

PALLET INFORMATION

Quantity of Cases Per Pallet Layer	17 Cases	Pallet Height	1.35 MTR
Quantity of Layers Per Pallet	7 Layers	Pallet Gross Weight	449 kg
Quantity of Cases Per Pallet	119 Cases		

PACKAGING

Inner Component Packaging						
Type	Materials	Weight	Recycled Plastic %	Recyclable	Returnable	Composite
Bag	Plastic	10 g	- %			
Outer Case Packaging						
Type	Materials	Weight	Recycled Plastic %	Recyclable	Returnable	Composite
Bag	Plastic	80 g	- %			
Bag	Paper/Cardboard	220 g	- %			

OTHER INFORMATION CONTACT INFORMATION

Address	Technical Contact
Nestlé UK	Helen Brewer
Nestlé UK Ltd	Technical Data Co-ordinator
Haxby Road	
York	
YO31 8TA1	
England	
P. (Phone) 0800 00 00 30	

The information on the [Erudus System](#) has been supplied by the manufacturers of the products and, whilst the owners of the Erudus System take steps to ensure the information is regularly updated, they give no warranty and no guarantee that the information is accurate. Product information and ingredients may change, please always read product labels carefully in addition to using the information provided by Erudus.

We do not accept liability for any inaccuracies or incorrect information contained on this site. Please visit <http://www.erudus.com/terms-and-conditions> for full terms and conditions.