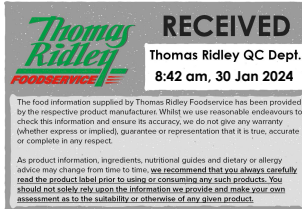


Changed Jan 30, 2024 00:00

Reviewed Jan 29, 2024 13:41

Erudus ID 407977fc5a904915aa9948514b80d2b1

Version 2.0



Creamed Horseradish Sauce 2 x 2.27 Litres

Creamed Horseradish Sauce 2 X 2.27 Litres

PRODUCT DESCRIPTION

Creamed Horseradish Sauce.

Brand	AAK Foods Limited
Manufacturer Product Code	F2979 (B1062)
Batch Code	F2979
Day Code	4029
Product Type	Food
Product Category	Sauces & Dips
Storage Type	Ambient
Erudus ID	407977fc5a904915aa9948514b80d2b1
Specification Type	Generic
Inner Pack GTIN	5010285110030
Outer Case GTIN	05010285108600



INGREDIENTS

Ingredient Declaration

Horseradish (36%) (Rehydrated Horseradish And Fresh Horseradish), Water, Sugar, Rapeseed Oil, Double Cream (3%) (MILK), Skimmed MILK Powder, Acidity Regulator (Acetic Acid), Spirit Vinegar, Salt, Pasteurised Dried EGG Yolk, Stabilisers (Xanthan Gum, Guar Gum), MUSTARD Flour, Preservative (SODIUM METABISULPHITE), Flavouring.

ALLERGENS

Product Contains:

Celery/Celeriac	No	Mustard	Yes
Cereals Containing Gluten	No	Nuts (Tree)	No
Barley	No	Almond nuts	No
Oats	No	Brazil nuts	No
Rye	No	Cashew nuts	No
Wheat (including Spelt and Khorasan)	No	Hazelnuts	No
Crustacea	No	Macadamia (Queensland) nuts	No
Eggs	Yes	Pecan nuts	No
Fish	No	Pistachio nuts	No
Lupin	No	Walnuts	No
Milk	Yes	Peanuts	No
Molluscs	No	Sesame Seeds	No
		Soybeans	No
		Sulphur Dioxide and Sulphites	Yes

Additional Allergen Information

Contains: Milk, Mustard, Sulphur Dioxide

SUPPLEMENTARY INGREDIENT INFORMATION

Palm Oil	No
Hydrogenated Vegetable Oil/Fat	No
GM Protein/DNA	No

ADDITIVES

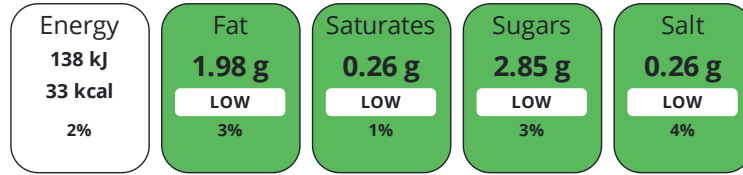
Product Contains:

Artificial Antioxidants	No	Artificial Flavourings	Yes
Artificial Colours	No	Artificial Preservatives	No
Artificial Flavour Enhancers	No	Artificial Sweeteners	No
Vegan Diet	No	Vegetarian Diet	Suitable for
Halal Diet	No	Kosher Diet	No

DIET
SUITABILITY

NUTRITIONAL
INFORMATION

Each 15g/ml serving contains:



of your reference intake.

Typical values per 15g/ml : Energy 33kcal / 138kj

Nutrient	per 100ml	RI per 100ml	per 15ml serving	RI per 15ml serving
Energy (kJ)	920 kJ	11%	138 kJ	2%
Energy (kcal)	221 kcal	11%	33.2 kcal	2%
Fat	13.2 g	19%	2 g	3%
of which Saturates	1.7 g	9%	0.3 g	2%
Carbohydrate	20.4 g	8%	3.1 g	1%
of which Sugars	19 g	21%	2.9 g	3%
Fibre	4.4 g		0.7 g	
Protein	3 g	6%	0.5 g	1%
Salt	1.73 g	29%	0.3 g	5%
Sodium	700 mg		105 mg	

Serving Size 15 ml

SUPPLEMENTARY
NUTRITIONAL
INFORMATION

HANDLING &
STORAGE
INFORMATION

Directions For Use

Shake gently before use.

Storage Instructions

Store in a cool, dry place out of direct sunlight. Refrigerate after opening and consume within 4 weeks.

Shelf Life from Time of Production	365 Days	Exempt From Shelf Life Labelling	No
---	----------	---	----

ACCREDITATIONS/
CERTIFICATIONS/
ASSURANCE
SCHEMES



ORIGIN

Product Country of Origin/Place of United Kingdom

Provenance

Additional Origin Details

Packed for Caterfood Essentials

PRODUCT
CHARACTERISTICS

Standards Testing

	Do you undertake trend analysis of microbiological results?	Yes		Is shelf life testing undertaken?	Yes		
	Analytical Standards						
	Test	Description	Frequency	Target	Range	Sample (g or ml)	
	Acidity (%)		Every Batch	=2.4	2.2 to 2.6	3	
	pH		Every Batch	<3.5	0 to 3.6	200	
	Salt Content (%)		Every Batch	=1.8	1.6 to 2	3	
	Physical Standards						
	Test	Description	Frequency	Target	Range	Sample (g or ml)	
	Dimensions Thickness (mm)	Viscosity	Every Batch	=7.25	6 to 8.5	200	
CONFIGURATION	Case Configuration		Inner Pack Configuration				
	Total Quantity of Inner Components in Outer Case	2 Units	Is Inner Pack Splittable?	No			
	Is the Outer Case Splittable?	Yes	Count per Inner Component	2			
PRODUCT WEIGHTS	Inner Component						
	Variable Weight Consumer Item	Yes					
	Inner Component Weight	2.56 kg					
	Net Drained Weight	0 kg					
	e mark	Yes					
	Outer Case						
	Outer Case Gross Weight	4.93 kg					
	Outer Case Net Weight	4.71 kg					
PRODUCT DIMENSIONS	Inner Component						
	Inner Component Depth	121 mm					
	Inner Component Width	120 mm					
	Inner Component Height	236 mm					
	Outer Case						
	Outer Case Depth	242 mm					
	Outer Case Width	120 mm					
	Outer Case Height	236 mm					
PALLET INFORMATION	Quantity of Cases Per Pallet Layer	40 Cases	Pallet Height	1.11 MTR			
	Quantity of Layers Per Pallet	4 Layers	Pallet Gross Weight	816.96 kg			
	Quantity of Cases Per Pallet	160 Cases					
PACKAGING	Inner Component Packaging						
	Type	Materials	Weight	Recycled Plastic %	Recyclable	Returnable	Composite
	Bottle	Plastic	104 g	- %			
	Bottle	Paper/Cardboard	3.5 g	- %			
	Outer Case Packaging						
	Type	Materials	Weight	Recycled Plastic %	Recyclable	Returnable	Composite
	Case	Plastic	10 g	- %			
	Case	Paper/Cardboard	1 g	- %			

Transport Packaging

Type	Materials	Weight	Recycled Plastic %	Recyclable	Returnable	Composite
Other	Plastic	500 g	- %		Yes	
Other	Paper/Cardboard	330 g	- %		Yes	
Other	Wood	20000 g	- %		Yes	

OTHER INFORMATION

Manufacturer Comments

Net Drained Weight is nil as Product is packed to an average weight.

CONTACT INFORMATION

Address

AAK Foods Limited
 AAK (UK) Ltd.
 King George Dock
 Hull
 HU9 5PX
 England

Technical Contact

Andy Reid
 Specifications Admin & Technologist
 Andrew.Reid@aak.com

P. (Phone) 01928276040

P. (Phone) 01482 701271

The information on the [Erudus System](#) has been supplied by the manufacturers of the products and, whilst the owners of the Erudus System take steps to ensure the information is regularly updated, they give no warranty and no guarantee that the information is accurate. Product information and ingredients may change, please always read product labels carefully in addition to using the information provided by Erudus.

We do not accept liability for any inaccuracies or incorrect information contained on this site.
 Please visit <http://www.erudus.com/terms-and-conditions> for full terms and conditions.