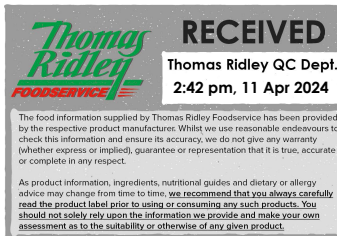


Changed Apr 08, 2024 11:45

Reviewed Apr 08, 2024 11:45

Erudus ID 622aaf5454cf4c7692b6723110f95722

Version 2.0



11408

# Chicken Liver & Brandy Pate 1kg x 3

Chicken Liver & Brandy Pate 3x1kg

## PRODUCT DESCRIPTION

Chicken liver pate with brandy

|                           |                                  |
|---------------------------|----------------------------------|
| Brand                     | Little & Cull Ltd                |
| Manufacturer Product Code | PAT001                           |
| Product Type              | Food                             |
| Product Category          | Pate & Parfait                   |
| Storage Type              | Frozen                           |
| Erudus ID                 | 622aaf5454cf4c7692b6723110f95722 |
| Specification Type        | Meat                             |
| Outer Case GTIN           | 5060376279054                    |



## INGREDIENTS

### Ingredient Declaration

Chicken liver (53%), cream (MILK) (27%), lard, water, sugar, redcurrant jelly [sugar, water, redcurrant juice concentrate, gelling agent (pectin)], brandy (1%), chicken stock [dried glucose syrup, yeast extracts, salt, natural flavouring, onion powder, sugar, chicken bone stock, rapeseed oil], pork gelatine, salt, curing salt [salt, preservatives (E250, E252), acidity regulator (E500(ii)), antioxidant (E301)], onion powder, nutmeg, white pepper, thyme, rapeseed oil, garlic powder, thickener (xanthan gum).

## ALLERGENS

Product Contains:

|                                      |     |                               |    |
|--------------------------------------|-----|-------------------------------|----|
| Celery/Celeriac                      | No  | Mustard                       | No |
| Cereals Containing Gluten            | No  | Nuts (Tree)                   | No |
| Barley                               | No  | Almond nuts                   | No |
| Oats                                 | No  | Brazil nuts                   | No |
| Rye                                  | No  | Cashew nuts                   | No |
| Wheat (including Spelt and Khorasan) | No  | Hazelnuts                     | No |
| Crustacea                            | No  | Macadamia (Queensland) nuts   | No |
| Eggs                                 | No  | Pecan nuts                    | No |
| Fish                                 | No  | Pistachio nuts                | No |
| Lupin                                | No  | Walnuts                       | No |
| Milk                                 | Yes | Peanuts                       | No |
| Molluscs                             | No  | Sesame Seeds                  | No |
|                                      |     | Soybeans                      | No |
|                                      |     | Sulphur Dioxide and Sulphites | No |

## SUPPLEMENTARY INGREDIENT INFORMATION

|                                |    |
|--------------------------------|----|
| Palm Oil                       | No |
| Hydrogenated Vegetable Oil/Fat | No |
| GM Protein/DNA                 | No |

ADDITIVES

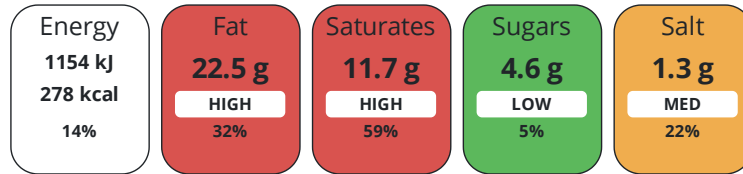
Product Contains:

|                                     |     |                                 |     |
|-------------------------------------|-----|---------------------------------|-----|
| <b>Artificial Antioxidants</b>      | Yes | <b>Artificial Flavourings</b>   | No  |
| <b>Artificial Colours</b>           | No  | <b>Artificial Preservatives</b> | Yes |
| <b>Artificial Flavour Enhancers</b> | No  | <b>Artificial Sweeteners</b>    | No  |
| <b>Halal Diet</b>                   | No  | <b>Kosher Diet</b>              | No  |

DIET SUITABILITY

NUTRITIONAL INFORMATION

Each 100g/ml portion contains:



of your reference intake.

Typical values per 100g/ml : Energy 278kcal / 1154kJ

| Nutrient                  | per 100g | RI per 100g |
|---------------------------|----------|-------------|
| <b>Energy (kJ)</b>        | 1154 kJ  | 14%         |
| <b>Energy (kcal)</b>      | 278 kcal | 14%         |
| <b>Fat</b>                | 22.5 g   | 32%         |
| <b>of which Saturates</b> | 11.7 g   | 59%         |
| <b>Carbohydrate</b>       | 6.1 g    | 2%          |
| <b>of which Sugars</b>    | 4.6 g    | 5%          |
| <b>Fibre</b>              | 0.5 g    |             |
| <b>Protein</b>            | 12.8 g   | 26%         |
| <b>Salt</b>               | 1.3 g    | 22%         |

SUPPLEMENTARY NUTRITIONAL INFORMATION

HANDLING & STORAGE INFORMATION

**Directions For Use**

Handling Guidelines: Defrost in a refrigerator for 24 hours. Once defrosted, remove from the bag. Lightly pull the long sides of the tray. Place a board on top of the tray and turn the pate over. It will release gently onto the board, ready for slicing. Once sliced, leave to stand for 10 minutes prior to serving. Return any unused pate to the tray, cover and refrigerate.

**Storage Instructions**

Frozen at -18°C or below. Once defrosted store chilled & use within 3 days

|   |          |   |    |
|---|----------|---|----|
| <b>Shelf Life from Time of Production</b> | 730 Days | <b>Exempt From Shelf Life Labelling</b> | No |
|---|----------|---|----|

**BRCGS Certified**

ACCREDITATIONS/ CERTIFICATIONS/ ASSURANCE SCHEMES ORIGIN

**Product Country of Origin/Place of** United Kingdom

**Provenance**

**Additional Origin Details**

Manufactured in the UK

PRODUCT CHARACTERISTICS

Standards Testing

|  |     |  |     |
|--|-----|--|-----|
| <b>Do you undertake trend analysis of microbiological results?</b> | Yes | <b>Is shelf life testing undertaken?</b> | Yes |
|--|-----|--|-----|

|                                      |   |   |                          |  |                   |                   |                  |
|--------------------------------------|---|---|--------------------------|--|-------------------|-------------------|------------------|
| CONFIGURATION                        | Case Configuration                                      |   | Inner Pack Configuration |  |                   |                   |                  |
|                                      | <b>Total Quantity of Inner Components in Outer Case</b> | 3 Units                                   |                          |  |                   |                   |                  |
|                                      | <b>Is the Outer Case Splittable?</b>                    | No  |                          |  |                   |                   |                  |
| PRODUCT WEIGHTS                      | Inner Component   |   |                          |  |                   |                   |                  |
|                                      | <b>Variable Weight Consumer Item</b>                    | No  |                          |  |                   |                   |                  |
|                                      | <b>Inner Component Weight</b>                           | 1 kg                                      |                          |  |                   |                   |                  |
|                                      | Outer Case  |   |                          |  |                   |                   |                  |
|                                      | <b>Outer Case Gross Weight</b>                          | 3.42 kg                                   |                          |  |                   |                   |                  |
|                                      | <b>Outer Case Net Weight</b>                            | 3 kg                                      |                          |  |                   |                   |                  |
| PRODUCT DIMENSIONS                   | Inner Component   |   |                          |  |                   |                   |                  |
|                                      | <b>Inner Component Depth</b>                            | 225 mm                                    |                          |  |                   |                   |                  |
|                                      | <b>Inner Component Width</b>                            | 110 mm                                    |                          |  |                   |                   |                  |
|                                      | <b>Inner Component Height</b>                           | 60 mm                                     |                          |  |                   |                   |                  |
|                                      | Outer Case  |   |                          |  |                   |                   |                  |
|                                      | <b>Outer Case Depth</b>                                 | 423 mm                                    |                          |  |                   |                   |                  |
|                                      | <b>Outer Case Width</b>                                 | 288 mm                                    |                          |  |                   |                   |                  |
|                                      | <b>Outer Case Height</b>                                | 100 mm                                    |                          |  |                   |                   |                  |
|                                      | PALLET INFORMATION                                      | <b>Quantity of Cases Per Pallet Layer</b> | 9 Cases                  | <b>Pallet Height</b>                     | 1.57 MTR          |                   |                  |
| <b>Quantity of Layers Per Pallet</b> |   | 16 Layers                                 |                          |  |                   |                   |                  |
| <b>Quantity of Cases Per Pallet</b>  |   | 144 Cases                                 |                          |  |                   |                   |                  |
| Inner Component Packaging            |   |   |                          |  |                   |                   |                  |
| PACKAGING                            | <b>Type</b>   | <b>Materials</b>                          | <b>Weight</b>            | <b>Recycled Plastic %</b>                | <b>Recyclable</b> | <b>Returnable</b> | <b>Composite</b> |
|                                      | Tub   | Plastic                                   | 51 g                     | - %                                      |                   |                   |                  |
|                                      | Outer Case Packaging                                    |   |                          |  |                   |                   |                  |
|                                      | <b>Type</b>   | <b>Materials</b>                          | <b>Weight</b>            | <b>Recycled Plastic %</b>                | <b>Recyclable</b> | <b>Returnable</b> | <b>Composite</b> |
|                                      | Case  | Paper/Cardboard                           | 263 g                    | - %                                      |                   |                   |                  |
|                                      | OTHER INFORMATION                                       |   |                          | <b>Identification/Health Marks</b>       | TZ050             |                   |                  |
|                                      |   |   |                          |  |                   |                   |                  |
|                                      | CONTACT INFORMATION                                     | Address                                   |                          | Technical Contact                        |                   |                   |                  |
|                                      |   | Little & Cull Ltd                         |                          | Linda Rose                               |                   |                   |                  |
|                                      |   | Pullman House, 7 Battle Road              |                          | Senior Specification & Food Technologist |                   |                   |                  |
| Heathfield Industrial Estate         |   | linda.r@littleandcull.co.uk               |                          |  |                   |                   |                  |
| Newton Abbot                         |   |   |                          |  |                   |                   |                  |
| TQ12 6RY                             |   |   |                          |  |                   |                   |                  |
| England                              |   |   |                          |  |                   |                   |                  |
| P: (Phone) 01626 830892              |   |   |                          |  |                   |                   |                  |

The information on the [Erudus System](#) has been supplied by the manufacturers of the products and, whilst the owners of the Erudus System take steps to ensure the information is regularly updated, they give no warranty and no guarantee that the information is accurate. Product information and ingredients may change, please always read product labels carefully in addition to using the information provided by Erudus.

We do not accept liability for any inaccuracies or incorrect information contained on this site. Please visit <http://www.erudus.com/terms-and-conditions> for full terms and conditions.