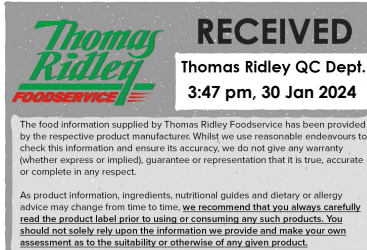


Changed Jan 30, 2024 12:58

Reviewed Jan 30, 2024 12:58

Erudus ID e15c21aa93d144758ba93de7c8f556e7

Version 2.0



**Thomas Ridley**  
FOODSERVICE

**RECEIVED**  
Thomas Ridley QC Dept.  
3:47 pm, 30 Jan 2024

The food information supplied by Thomas Ridley Foodservice has been provided by the respective product manufacturer. Whilst we use reasonable endeavours to check this information and ensure its accuracy, we do not give any warranty (whether express or implied), guarantee or representation that it is true, accurate or complete in any respect.

As product information, ingredients, nutritional guides and dietary or allergy advice may change from time to time, we recommend that you always carefully read the product label prior to using or consuming any such products. You should not solely rely upon the information we provide and make your own assessment as to the suitability or otherwise of any given product.



# Chinese Chicken Curry 4 x 1.75kg

Chinese Chicken Curry

## PRODUCT DESCRIPTION

A Chinese-style curry sauce with chicken

<b>Brand</b>	PastaKing (UK) Limited
<b>Manufacturer Product Code</b>	LECC 15
<b>Manufacturer Version Number</b>	2
<b>Effective Date</b>	Jan 30, 2024
<b>Product Type</b>	Food
<b>Product Category</b>	Sauces & Dips
<b>Storage Type</b>	Chilled
<b>Erudus ID</b>	e15c21aa93d144758ba93de7c8f556e7
<b>Specification Type</b>	Generic



## INGREDIENTS

### Ingredient Declaration

Water (61%), Chicken Diced (14%) (Chicken Breast, Salt), Chinese Curry Paste (14%) (Rapeseed Oil, Fortified WHEAT Flour (WHEAT Flour, Calcium Carbonate, Iron, Niacin, Thiamin), Curry Powder (Coriander, Turmeric, Cumin, Gram Flour, Salt, Fenugreek, Black Pepper, Chilli, Garlic, Fennel Seed, MUSTARD, Star Anise), Salt, Water, Coconut Cream, Onion Powder, Liquorice, Flavormate), Mushrooms Sliced (6%) (Mushrooms, Water, Acidity Regulator (Citric Acid), Antioxidant (Ascorbic Acid)), Diced Onions (3%), Raisins (2%), Modified Maize Starch

## ALLERGENS

Product Contains:

<b>Celery/Celeriac</b>	May Contain	<b>Mustard</b>	Yes
<b>Cereals Containing Gluten</b>	Yes	<b>Nuts (Tree)</b>	No
<b>Barley</b>	No	<b>Almond nuts</b>	No
<b>Oats</b>	No	<b>Brazil nuts</b>	No
<b>Rye</b>	No	<b>Cashew nuts</b>	No
<b>Wheat (including Spelt and Khorasan)</b>	Yes	<b>Hazelnuts</b>	No
<b>Crustacea</b>	No	<b>Macadamia (Queensland) nuts</b>	No
<b>Eggs</b>	No	<b>Pecan nuts</b>	No
<b>Fish</b>	No	<b>Pistachio nuts</b>	No
<b>Lupin</b>	No	<b>Walnuts</b>	No
<b>Milk</b>	No	<b>Peanuts</b>	No
<b>Molluscs</b>	No	<b>Sesame Seeds</b>	No
		<b>Soybeans</b>	May Contain
		<b>Sulphur Dioxide and Sulphites</b>	No

Risk Source:

### Additional Allergen Information

For allergens see ingredients in BOLD May contain SOYA and CELERY.

SUPPLEMENTARY  
INGREDIENT  
INFORMATION

<b>Palm Oil</b>	No
<b>Hydrogenated Vegetable Oil/Fat</b>	No
<b>GM Protein/DNA</b>	No

ADDITIVES

*Product Contains:*

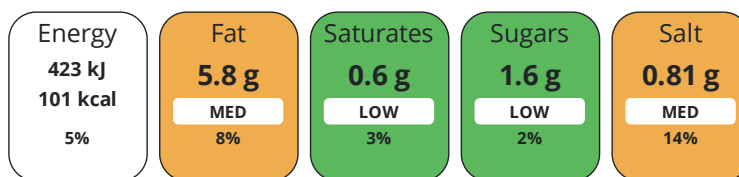
<b>Artificial Antioxidants</b>	No	<b>Artificial Flavourings</b>	No
<b>Artificial Colours</b>	No	<b>Artificial Preservatives</b>	Yes
<b>Artificial Flavour Enhancers</b>	No	<b>Artificial Sweeteners</b>	No

DIET  
SUITABILITY

<b>Vegan Diet</b>	No	<b>Vegetarian Diet</b>	No
<b>Halal Diet</b>	No	<b>Kosher Diet</b>	No

NUTRITIONAL  
INFORMATION

Each 100g/ml serving contains:



of your reference intake.

Typical values per 100g/ml : Energy 101kcal / 423kj

Nutrient	per 100g	RI per 100g	per 100g serving	RI per 100g serving
<b>Energy (kJ)</b>	423 kJ	5%	423 kJ	5%
<b>Energy (kcal)</b>	101 kcal	5%	101 kcal	5%
<b>Fat</b>	5.8 g	8%	5.8 g	8%
<b>of which Saturates</b>	0.6 g	3%	0.6 g	3%
<b>of which Mono-unsaturates</b>	3.44 g		3.4 g	
<b>of which Polyunsaturates</b>	1.51 g		1.5 g	
<b>Carbohydrate</b>	7.6 g	3%	7.6 g	3%
<b>of which Sugars</b>	1.6 g	2%	1.6 g	2%
<b>Fibre</b>	1 g		1 g	
<b>Protein</b>	5.16 g	10%	5.2 g	10%
<b>Salt</b>	0.81 g	14%	0.8 g	13%
<b>Sodium</b>	323 mg		323 mg	
<b>Serving Size</b>	100 g			

SUPPLEMENTARY  
NUTRITIONAL  
INFORMATION

HANDLING &  
STORAGE  
INFORMATION

**Directions For Use**

**BOIL IN THE BAG** Fully immerse the pouch in boiling water; bring back to the boil and heat for approx. 1 hour, gently agitating the bag half way through. **STEAM** Place a pouch in a metal tray and make a tiny hole at the top, to release the pressure in the pouch. Steam for approximately 1hr. alternatively, empty the pouch contents into a suitable container large enough to accommodate the sauce and cover. The gastronorms provided should NOT be used to heat an entire pouch. **PAN HEAT** Empty pouch contents into a thick-based saucepan, heat thoroughly on a medium heat for approximately 45 minutes, stirring frequently to avoid burning, sticking or sauce spitting. Ensure that a minimum temperature of 82oC is reached throughout the product. Do not allow the sauce to boil, as this will impair the quality and may cause the sauce to spit **HEATING FROM DEFROST** Re-heating when defrosted:

- Sauces must not be steamed or boiled in the bag. This is because the pouch material may have become brittle during freezing.
- To heat on the hob follow the heating instructions contained within the customer guide. • Ensure that the contents are heated to a minimum of 82oC. • Do not re-heat products that have previously been heated.

**Storage Instructions**

Keep chilled <5oC

<b>Shelf Life from Time of Production</b>	18 Days	<b>Exempt From Shelf Life Labelling</b>	No
---	---------	---	----

ACCREDITATIONS/  
CERTIFICATIONS/  
ASSURANCE  
SCHEMES



ORIGIN

**Product Country of Origin/Place of** United Kingdom

**Provenance**

**Additional Origin Details**

Made and packed in UK

PRODUCT  
CHARACTERISTICS

Standards Testing

<b>Do you undertake trend analysis of microbiological results?</b>	Yes	<b>Is shelf life testing undertaken?</b>	Yes
--	-----	--	-----

CONFIGURATION

Case Configuration

Inner Pack Configuration

<b>Total Quantity of Inner Components in Outer Case</b>	4 Units
---	---------

PRODUCT  
WEIGHTS

Inner Component

<b>Variable Weight Consumer Item</b>	Yes
--------------------------------------	-----

Outer Case

<b>Outer Case Gross Weight</b>	7.31 kg
--------------------------------	---------

<b>Outer Case Net Weight</b>	7 kg
------------------------------	------

PRODUCT  
DIMENSIONS

Inner Component

<b>Inner Component Depth</b>	300 mm
------------------------------	--------

<b>Inner Component Width</b>	270 mm
------------------------------	--------

<b>Inner Component Height</b>	30 mm
-------------------------------	-------

Outer Case

<b>Outer Case Depth</b>	320 mm
-------------------------	--------

<b>Outer Case Width</b>	275 mm
-------------------------	--------

<b>Outer Case Height</b>	103 mm
--------------------------	--------

PALLET  
INFORMATION

<b>Quantity of Cases Per Pallet Layer</b>	12 Cases	<b>Pallet Height</b>	1.5 MTR
---	----------	----------------------	---------

<b>Quantity of Layers Per Pallet</b>	10 Layers	<b>Pallet Gross Weight</b>	877 kg
--------------------------------------	-----------	----------------------------	--------

<b>Quantity of Cases Per Pallet</b>	120 Cases
-------------------------------------	-----------

PACKAGING

Inner Component Packaging

Type	Materials	Weight	Recycled Plastic %	Recyclable	Returnable	Composite
Pack	Plastic	25 g	- %			

Outer Case Packaging

Type	Materials	Weight	Recycled Plastic %	Recyclable	Returnable	Composite
Case	Paper/Cardboard	261 g	- %			

OTHER INFORMATION  
CONTACT INFORMATION

Address

PastaKing (UK) Limited  
 Plantation House  
 Milber Trading Estate  
 Newton Abbott  
 Devon  
 TQ12 4SG  
 England

P: (Phone) 08004587898

The information on the [Erudus System](#) has been supplied by the manufacturers of the products and, whilst the owners of the Erudus System take steps to ensure the information is regularly updated, they give no warranty and no guarantee that the information is accurate. Product information and ingredients may change, please always read product labels carefully in addition to using the information provided by Erudus.

We do not accept liability for any inaccuracies or incorrect information contained on this site.  
 Please visit <http://www.erudus.com/terms-and-conditions> for full terms and conditions.