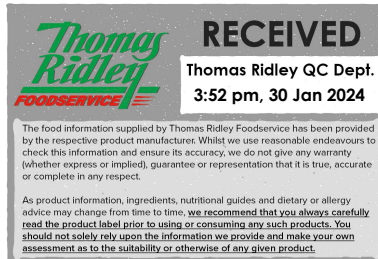


Changed Jan 30, 2024 12:14

Reviewed Jan 30, 2024 12:14

Erudus ID 075c09ee39534c7187980fcdc29ef3f4

Version 2.0



**Thomas Ridley**  
FOODSERVICE

**RECEIVED**  
Thomas Ridley QC Dept.  
3:52 pm, 30 Jan 2024

The food information supplied by Thomas Ridley Foodservice has been provided by the respective product manufacturer. Whilst we use reasonable endeavours to check this information and ensure its accuracy, we do not give any warranty (whether express or implied), guarantee or representation that it is true, accurate or complete in any respect.

As product information, ingredients, nutritional guides and dietary or allergy advice may change from time to time, we recommend that you always carefully read the product label prior to using or consuming any such products. You should not solely rely upon the information we provide and make your own assessment as to the suitability or otherwise of any given product.



# Halal SK Chicken Tikka Masala 4 x 1.75kg

Halal Sk Chicken Tikka Masala

## PRODUCT DESCRIPTION

A delicious Indian curry with a gentle spicy flavour with Halal chicken and onions

<b>Brand</b>	PastaKing (UK) Limited
<b>Manufacturer Product Code</b>	HSKTM 15
<b>Manufacturer Version Number</b>	2
<b>Effective Date</b>	Jan 30, 2024
<b>Product Type</b>	Food
<b>Product Category</b>	Sauces & Dips
<b>Storage Type</b>	Chilled
<b>Erudus ID</b>	075c09ee39534c7187980fcdc29ef3f4
<b>Specification Type</b>	Generic



## INGREDIENTS

### Ingredient Declaration

Tikka Sauce (71%) (Water, Onion, Tomato Juice, Tomato Paste, Yoghurt (MILK), Rapeseed Oil, Sugar, Ground Cumin, Ginger Puree, Salt, Skimmed Milk Powder (MILK), Garlic Puree, Coriander Leaf, Paprika, Ground Coriander, Turmeric, Lactic Acid, Cardamom, Chilli Powder, MUSTARD Powder, Ground Fennel Seed, Ground Fenugreek, Colour (Beta-Carotene)), Halal Chicken (20%) (Chicken Breast, Salt), Diced Onions (9%).

## ALLERGENS

Product Contains:

<b>Celery/Celeriac</b>	No	<b>Mustard</b>	Yes
<b>Cereals Containing Gluten</b>	No	<b>Nuts (Tree)</b>	No
<b>Barley</b>	No	<b>Almond nuts</b>	No
<b>Oats</b>	No	<b>Brazil nuts</b>	No
<b>Rye</b>	No	<b>Cashew nuts</b>	No
<b>Wheat (including Spelt and Khorasan)</b>	No	<b>Hazelnuts</b>	No
<b>Crustacea</b>	No	<b>Macadamia (Queensland) nuts</b>	No
<b>Eggs</b>	No	<b>Pecan nuts</b>	No
<b>Fish</b>	No	<b>Pistachio nuts</b>	No
<b>Lupin</b>	No	<b>Walnuts</b>	No
<b>Milk</b>	Yes	<b>Peanuts</b>	No
<b>Molluscs</b>	No	<b>Sesame Seeds</b>	No
		<b>Soybeans</b>	No
		<b>Sulphur Dioxide and Sulphites</b>	No

### Additional Allergen Information

For allergens see ingredients listed in BOLD

## SUPPLEMENTARY INGREDIENT INFORMATION

<b>Palm Oil</b>	No
<b>Hydrogenated Vegetable Oil/Fat</b>	No
<b>GM Protein/DNA</b>	No

ADDITIVES

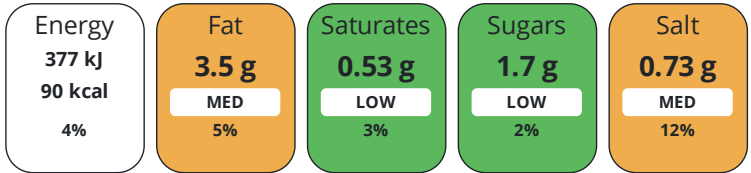
Product Contains:

<b>Artificial Antioxidants</b>	No	<b>Artificial Flavourings</b>	No
<b>Artificial Colours</b>	No	<b>Artificial Preservatives</b>	No
<b>Artificial Flavour Enhancers</b>	No	<b>Artificial Sweeteners</b>	No
<b>Vegan Diet</b>	No	<b>Vegetarian Diet</b>	No
<b>Halal Diet</b>	Suitable for	<b>Kosher Diet</b>	No

DIET SUITABILITY

NUTRITIONAL INFORMATION

Each 100g/ml serving contains:



of your reference intake.

Typical values per 100g/ml : Energy 90kcal / 377kj

Nutrient	per 100g	RI per 100g	per 100g serving	RI per 100g serving
<b>Energy (kJ)</b>	377 kJ	4%	377 kJ	4%
<b>Energy (kcal)</b>	90 kcal	5%	90 kcal	5%
<b>Fat</b>	3.5 g	5%	3.5 g	5%
<b>of which Saturates</b>	0.53 g	3%	0.5 g	3%
<b>of which Mono-unsaturates</b>	1.9 g		1.9 g	
<b>of which Polyunsaturates</b>	0.92 g		0.9 g	
<b>Carbohydrate</b>	5.8 g	2%	5.8 g	2%
<b>of which Sugars</b>	1.7 g	2%	1.7 g	2%
<b>Fibre</b>	1.8 g		1.8 g	
<b>Protein</b>	9.66 g	19%	9.7 g	19%
<b>Salt</b>	0.73 g	12%	0.7 g	12%
<b>Sodium</b>	290 mg		290 mg	
<b>Serving Size</b>	100 g			

SUPPLEMENTARY NUTRITIONAL INFORMATION

HFSS (HIGH IN FAT, SALT AND SUGAR)

<b>HFSS Status</b>	No
--------------------	----

HANDLING & STORAGE INFORMATION

**Directions For Use**

**BOIL IN THE BAG** Fully immerse the pouch in boiling water; bring back to the boil and heat for approx. 1 hour, gently agitating the bag half way through. **STEAM** Place a pouch in a metal tray and make a tiny hole at the top, to release the pressure in the pouch. Steam for approximately 1hr. alternatively, empty the pouch contents into a suitable container large enough to accommodate the sauce and cover. The gastronorms provided should NOT be used to heat an entire pouch. **PAN HEAT** Empty pouch contents into a thick-based saucepan, heat thoroughly on a medium heat for approximately 45 minutes, stirring frequently to avoid burning, sticking or sauce spitting. Ensure that a minimum temperature of 82oC is reached throughout the product. Do not allow the sauce to boil, as this will impair the quality and may cause the sauce to spit **HEATING FROM DEFROST** Re-heating when defrosted:

- Sauces must not be steamed or boiled in the bag. This is because the pouch material may have become brittle during freezing.
- To heat on the hob follow the heating instructions contained within the customer guide. • Ensure that the contents are heated to a minimum of 82oC. • Do not re-heat products that have previously been heated.

**Storage Instructions**

Keep chilled <5oC

<b>Shelf Life from Time of Production</b>	10 Days	<b>Exempt From Shelf Life Labelling</b>	No
---	---------	---	----

ACCREDITATIONS/ CERTIFICATIONS/ ASSURANCE SCHEMES



**Other Accreditation**

Halal Food Authority Certification

<b>ORIGIN</b>	<b>Product Country of Origin/Place of Provenance</b>	United Kingdom
---------------	--	----------------

**Additional Origin Details**

Made and packed in UK

PRODUCT CHARACTERISTICS

Standards Testing		
<b>Do you undertake trend analysis of microbiological results?</b>	Yes	<b>Is shelf life testing undertaken?</b> Yes

CONFIGURATION

Case Configuration		Inner Pack Configuration
<b>Total Quantity of Inner Components in Outer Case</b>	4 Units	

PRODUCT WEIGHTS

Inner Component	
<b>Variable Weight Consumer Item</b>	Yes
Outer Case	
<b>Outer Case Gross Weight</b>	7.31 kg
<b>Outer Case Net Weight</b>	7 kg

PRODUCT DIMENSIONS

Inner Component	
<b>Inner Component Depth</b>	300 mm
<b>Inner Component Width</b>	270 mm
<b>Inner Component Height</b>	30 mm
Outer Case	
<b>Outer Case Depth</b>	320 mm
<b>Outer Case Width</b>	275 mm
<b>Outer Case Height</b>	103 mm

PALLET INFORMATION

<b>Quantity of Cases Per Pallet Layer</b>	12 Cases	<b>Pallet Height</b>	1.5 MTR
<b>Quantity of Layers Per Pallet</b>	10 Layers	<b>Pallet Gross Weight</b>	877 kg
<b>Quantity of Cases Per Pallet</b>	120 Cases		

PACKAGING

Inner Component Packaging

Type	Materials	Weight	Recycled Plastic %	Recyclable	Returnable	Composite
Pack	Plastic	25 g	- %			

Outer Case Packaging

Type	Materials	Weight	Recycled Plastic %	Recyclable	Returnable	Composite
Case	Paper/Cardboard	261 g	- %			

OTHER INFORMATION  
CONTACT INFORMATION

Address

PastaKing (UK) Limited  
 Plantation House  
 Milber Trading Estate  
 Newton Abbott  
 Devon  
 TQ12 4SG  
 England

P: (Phone) 08004587898

The information on the [Erudus System](#) has been supplied by the manufacturers of the products and, whilst the owners of the Erudus System take steps to ensure the information is regularly updated, they give no warranty and no guarantee that the information is accurate. Product information and ingredients may change, please always read product labels carefully in addition to using the information provided by Erudus.

We do not accept liability for any inaccuracies or incorrect information contained on this site.  
 Please visit <http://www.erudus.com/terms-and-conditions> for full terms and conditions.