

Changed Feb 26, 2024 16:23

Reviewed Feb 26, 2024 16:23

Erudus ID 9e071dd1da59444fb78b06f35fb0145a

Version 2.0

11420

Italian Meatballs 4 x 1.75kg

Meatballs

PRODUCT DESCRIPTION

A rich tomato sauce with pork meatballs and paprika

Brand	PastaKing (UK) Limited
Manufacturer Product Code	MM 15
Manufacturer Version	2
Number	
Effective Date	Feb 26, 2024
Product Type	Food
Product Category	Sauces & Dips
Storage Type	Chilled
Erudus ID	9e071dd1da59444fb78b06f35fb0145a
Specification Type	Generic



INGREDIENTS

Ingredient Declaration

Tomato Coulis (85%) (Tomato, Tomato Paste, Water, Onion, Carrot, Sugar, Sunflower Oil, Salt Preservative (Potassium Sorbate), Black Ground Pepper, Basil), British Meatballs Pork (14%) (Pork, Onion, Rusk (WHEAT Flour (Contains Calcium Carbonate, Iron, Niacin, Thiamin), Salt), Garlic Puree, Tomato Puree, Fennel, Salt, Dextrose, Chilli Powder), Paprika.

ALLERGENS

Product Contains:

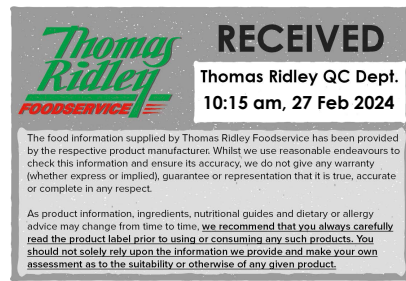
Celery/Celeriac	No	Mustard	No
Cereals Containing Gluten	Yes	Nuts (Tree)	No
Barley	No	Almond nuts	No
Oats	No	Brazil nuts	No
Rye	No	Cashew nuts	No
Wheat (including Spelt and Khorasan)	Yes	Hazelnuts	No
Crustacea	No	Macadamia (Queensland) nuts	No
Eggs	No	Pecan nuts	No
Fish	No	Pistachio nuts	No
Lupin	No	Walnuts	No
Milk	No	Peanuts	No
Molluscs	No	Sesame Seeds	No
		Soybeans	No
		Sulphur Dioxide and Sulphites	No

Additional Allergen Information

For allergens see ingredients in BOLD

SUPPLEMENTARY INGREDIENT INFORMATION

Palm Oil	No
Hydrogenated Vegetable Oil/Fat	No
GM Protein/DNA	No



ADDITIVES

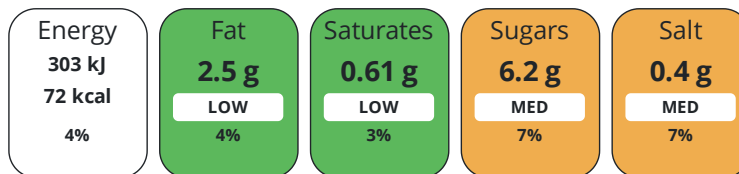
Product Contains:

Artificial Antioxidants	No	Artificial Flavourings	No
Artificial Colours	No	Artificial Preservatives	Yes
Artificial Flavour Enhancers	No	Artificial Sweeteners	No
Vegan Diet	No	Vegetarian Diet	No
Halal Diet	No	Kosher Diet	No

DIET
SUITABILITY

NUTRITIONAL
INFORMATION

Each 100g/ml portion contains:



of your reference intake.

Typical values per 100g/ml : Energy 72kcal / 303kj

Nutrient	per 100g	RI per 100g	per 100g serving	RI per 100g serving
Energy (kJ)	303 kJ	4%	303 kJ	4%
Energy (kcal)	72 kcal	4%	72 kcal	4%
Fat	2.5 g	4%	2.5 g	4%
of which Saturates	0.61 g	3%	0.6 g	3%
of which Mono-unsaturates	0.78 g		0.8 g	
of which Polyunsaturates	0.61 g		0.6 g	
Carbohydrate	8.9 g	3%	8.9 g	3%
of which Sugars	6.2 g	7%	6.2 g	7%
Fibre	1.5 g		1.5 g	
Protein	4.33 g	9%	4.3 g	9%
Salt	0.4 g	7%	0.4 g	7%
Sodium	161 mg		161 mg	
Serving Size	100 g			

SUPPLEMENTARY
NUTRITIONAL
INFORMATION

HANDLING &
STORAGE
INFORMATION

Directions For Use

BOIL IN THE BAG Fully immerse the pouch in boiling water; bring back to the boil and heat for approx. 1 hour, gently agitating the bag half way through. **STEAM** Place a pouch in a metal tray and make a tiny hole at the top, to release the pressure in the pouch. Steam for approximately 1hr. alternatively, empty the pouch contents into a suitable container large enough to accommodate the sauce and cover. The gastronorms provided should NOT be used to heat an entire pouch. **PAN HEAT** Empty pouch contents into a thick-based saucepan, heat thoroughly on a medium heat for approximately 45 minutes, stirring frequently to avoid burning, sticking or sauce spitting. Ensure that a minimum temperature of 82oC is reached throughout the product. Do not allow the sauce to boil, as this will impair the quality and may cause the sauce to spit **HEATING FROM DEFROST** Re-heating when defrosted:

- Sauces must not be steamed or boiled in the bag. This is because the pouch material may have become brittle during freezing.
- To heat on the hob follow the heating instructions contained within the customer guide. • Ensure that the contents are heated to a minimum of 82oC. • Do not re-heat products that have previously been heated.

Storage Instructions

Store chilled <5oC

Shelf Life from Time of Production	18 Days	Exempt From Shelf Life Labelling	No
---	---------	---	----

ACCREDITATIONS/
CERTIFICATIONS/
ASSURANCE
SCHEMES



ORIGIN

Product Country of Origin/Place of United Kingdom

Provenance

Additional Origin Details

Made and packed in UK

PRODUCT
CHARACTERISTICS

Standards Testing

Do you undertake trend analysis of microbiological results?	Yes	Is shelf life testing undertaken?	Yes
--	-----	--	-----

CONFIGURATION

Case Configuration

Inner Pack Configuration

Total Quantity of Inner Components in Outer Case	4 Units
---	---------

PRODUCT
WEIGHTS

Inner Component

Variable Weight Consumer Item	Yes
--------------------------------------	-----

Outer Case

Outer Case Gross Weight	7.31 kg
Outer Case Net Weight	7 kg

PRODUCT
DIMENSIONS

Inner Component

Inner Component Depth	300 mm
Inner Component Width	270 mm
Inner Component Height	30 mm

Outer Case

Outer Case Depth	320 mm
Outer Case Width	275 mm
Outer Case Height	103 mm

PALLET
INFORMATION

Quantity of Cases Per Pallet Layer	12 Cases	Pallet Height	1.5 MTR
Quantity of Layers Per Pallet	10 Layers	Pallet Gross Weight	877 kg
Quantity of Cases Per Pallet	120 Cases		

PACKAGING

Inner Component Packaging

Type	Materials	Weight	Recycled Plastic %	Recyclable	Returnable	Composite
Pack	Plastic	25 g	- %			

Outer Case Packaging

Type	Materials	Weight	Recycled Plastic %	Recyclable	Returnable	Composite
Case	Paper/Cardboard	261 g	- %			

OTHER INFORMATION CONTACT INFORMATION

Address

PastaKing (UK) Limited
 Plantation House
 Milber Trading Estate
 Newton Abbott
 Devon
 TQ12 4SG
 England

P. (Phone) 08004587898

The information on the [Erudus System](#) has been supplied by the manufacturers of the products and, whilst the owners of the Erudus System take steps to ensure the information is regularly updated, they give no warranty and no guarantee that the information is accurate. Product information and ingredients may change, please always read product labels carefully in addition to using the information provided by Erudus.

We do not accept liability for any inaccuracies or incorrect information contained on this site. Please visit <http://www.erudus.com/terms-and-conditions> for full terms and conditions.