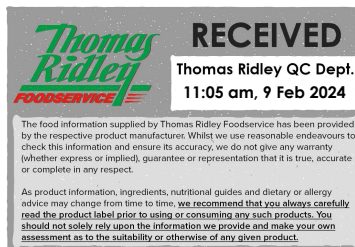


Changed Feb 07, 2024 16:37

Reviewed Feb 07, 2024 16:37

Erudus ID 01560aa96aa043a4a1b8e4f5d56be52f

Version 2.0



# MSC Premier Whitefish Fishcake 85g

Cod (gadus Morhua), Haddock (melanogrammus Aeglefinus), Pollock (theragra Chalcogramma) 30x30

## PRODUCT DESCRIPTION

Formed minced whitefish and potato coated in breadcrumb, flash fried

Brand	Three Oceans Fish Company
Manufacturer Product Code	PFC3
Product Type	Food
Product Category	Fishcakes & Fish Pies
Storage Type	Frozen
Erudus ID	01560aa96aa043a4a1b8e4f5d56be52f
Specification Type	Fish and Seafood

Outer Case GTIN 5060061303712



## INGREDIENTS

### Ingredient Declaration

Minced Whitefish (FISH) (36%), Water, Potato Flake, WHEAT Flour (WHEAT Flour, Calcium Carbonate, Iron, Niacin, Thiamin), Rapeseed Oil, Salt, Raising agent (Sodium Phosphates), Onion, Sage, Parsley, Yeast, Mono- and diglycerides of Fatty Acids, Pepper Extract.

## ALLERGENS

Product Contains:

Celery/Celeriac	No	Mustard	No
Cereals Containing Gluten	Yes	Nuts (Tree)	No
Barley	No	Almond nuts	No
Oats	No	Brazil nuts	No
Rye	No	Cashew nuts	No
Wheat (including Spelt and Khorasan)	Yes	Hazelnuts	No
Crustacea	No	Macadamia (Queensland) nuts	No
Eggs	No	Pecan nuts	No
Fish	Yes	Pistachio nuts	No
Lupin	No	Walnuts	No
Milk	No	Peanuts	No
Molluscs	No	Sesame Seeds	No
		Soybeans	No
		Sulphur Dioxide and Sulphites	No

### Additional Allergen Information

Allergens in the ingredients list are shown in CAPITALS

## SUPPLEMENTARY INGREDIENT INFORMATION

Palm Oil	No
Hydrogenated Vegetable Oil/Fat	No
GM Protein/DNA	No

ADDITIVES

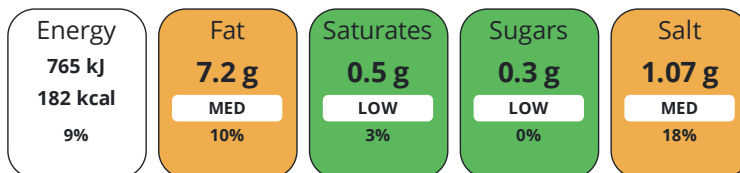
Product Contains:

<b>Artificial Antioxidants</b>	No	<b>Artificial Flavourings</b>	No
<b>Artificial Colours</b>	No	<b>Artificial Preservatives</b>	No
<b>Artificial Flavour Enhancers</b>	No	<b>Artificial Sweeteners</b>	No
<b>Halal Diet</b>	No	<b>Kosher Diet</b>	No

DIET SUITABILITY

NUTRITIONAL INFORMATION

Each 100g/ml portion contains:



of your reference intake.

Typical values per 100g/ml : Energy 182kcal / 765kj

Nutrient	per 100g	RI per 100g	per 100g serving	RI per 100g serving
<b>Energy (kJ)</b>	765 kJ	9%	765 kJ	9%
<b>Energy (kcal)</b>	182 kcal	9%	182 kcal	9%
<b>Fat</b>	7.2 g	10%	7.2 g	10%
<b>of which Saturates</b>	0.5 g	3%	0.5 g	3%
<b>Carbohydrate</b>	17.4 g	7%	17.4 g	7%
<b>of which Sugars</b>	0.3 g	0%	0.3 g	0%
<b>Fibre</b>	2.5 g		2.5 g	
<b>Protein</b>	10.7 g	21%	10.7 g	21%
<b>Salt</b>	1.07 g	18%	1.1 g	18%

**Serving Size** 100 g

SUPPLEMENTARY NUTRITIONAL INFORMATION

HANDLING & STORAGE INFORMATION

**Directions For Use**

Oven bake: Place on a baking tray in a pre-heated oven at 200°C / gas mark 7 for approximately 20 - 22 minutes. Deep fry: Deep fry in hot oil at 180°C for approximately 4.5 - 5 minutes. Air fry: Cook using manufacturers guidelines. This is a raw product and must be cooked to a minimum temperature of 75°C for 30 seconds or equivalent.

**Storage Instructions**

Keep frozen at -18°C or below and do not refreeze after thawing. Product to be stored and transported at -18°C or below under clean and hygienic conditions.

<b>Shelf Life from Time of Production</b>	547 Days	<b>Exempt From Shelf Life Labelling</b>	Yes
-------------------------------------------	----------	-----------------------------------------	-----

ACCREDITATIONS/ CERTIFICATIONS/ ASSURANCE SCHEMES



ORIGIN

PRODUCT CHARACTERISTICS

Standards Testing			
<b>Do you undertake trend analysis of microbiological results?</b>	No	<b>Is shelf life testing undertaken?</b>	No

Microbiological Standards

Organism	Description	Frequency	Target	Maximum	Sample (g or ml)
E. Coli (cfu/g or ml)		Every Batch	<100	100	85
Enterobacteriaceae (cfu/g or ml)		Every Batch	<1000	1000	85
Staphylococcus Aureus (cfu/g or ml)		Every Batch	<100	100	85
Aerobic Colony Count (ACC) (cfu/g or ml)		Every Batch	<1000000	1000000	85

CONFIGURATION

Case Configuration	30 Units	Inner Pack Configuration	Count per Inner Component	30
<b>Total Quantity of Inner Components in Outer Case</b>				

PRODUCT WEIGHTS

Inner Component	Variable Weight Consumer Item	No
Outer Case	<b>Outer Case Gross Weight</b>	2.73 kg
	<b>Outer Case Net Weight</b>	2.55 kg

PRODUCT DIMENSIONS

Inner Component	<b>Inner Component Depth</b>	0 mm
	<b>Inner Component Width</b>	0 mm
	<b>Inner Component Height</b>	0 mm

Outer Case	<b>Outer Case Depth</b>	292 mm
	<b>Outer Case Width</b>	227 mm
	<b>Outer Case Height</b>	114 mm

PALLET INFORMATION

<b>Quantity of Cases Per Pallet Layer</b>	17 Cases	<b>Pallet Height</b>	1.71 MTR
<b>Quantity of Layers Per Pallet</b>	13 Layers	<b>Pallet Gross Weight</b>	697.17 kg
<b>Quantity of Cases Per Pallet</b>	221 Cases		

PACKAGING

Outer Case Packaging						
Type	Materials	Weight	Recycled Plastic %	Recyclable	Returnable	Composite
Case	Paper/Cardboard	174 g	- %			

OTHER INFORMATION

CONTACT  
INFORMATION

Address

Three Oceans Fish Company  
Ocean House  
Witty Street  
Hull  
HU3 4TT  
United Kingdom

P: (Phone) 01482 306000

Complaints Contact

Simon Derrick  
Senior Technical Manager (Compliance)  
sed@3oceans.co.uk

P: (Phone) 01482306000

Technical Contact

Elaine Caizerques  
Head of Technical  
EC@3oceans.co.uk

P: (Phone) 01482 306000 ext 205

Commercial Contact

Dan Martin  
Chief of Sales  
DGM@3oceans.co.uk

P: (Phone) 01482 306000

The information on the [Erudus System](#) has been supplied by the manufacturers of the products and, whilst the owners of the Erudus System take steps to ensure the information is regularly updated, they give no warranty and no guarantee that the information is accurate. Product information and ingredients may change, please always read product labels carefully in addition to using the information provided by Erudus.

We do not accept liability for any inaccuracies or incorrect information contained on this site.  
Please visit <http://www.erudus.com/terms-and-conditions> for full terms and conditions.