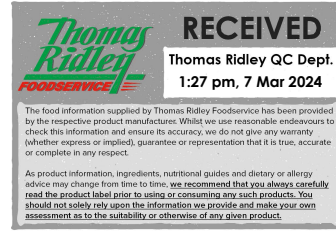


Changed Mar 07, 2024 11:23

Reviewed Mar 07, 2024 11:23

Erudus ID 989964c3833947f8a2962ef133df76d7

Version 3.0



Redefine Meat Plant Based Bratwurst Sausage, 1kg

Plant Based Bratwurst Sausage 4x1kg

PRODUCT DESCRIPTION

Plant-based Redefine Bratwurst Sausage allows vegans, as well as meat lovers, to enjoy a great meat-eating experience, without compromising on taste. Redefine Bratwurst is a plump, delicious new-meat sausage following in the tradition of classic pork-flavoured delicacies. Perfect for grilling or frying in a pan, this hearty, juicy new-meat plant-based sausage is sure to satisfy even the most die-hard carnivore. * Redefine Meat Ltd. products are plant-based, non-GMO and do not contain any animal-based ingredients or by-products.

Brand	Redefine Meat
Manufacturer Product Code	422012
Product Type	Food
Product Category	Plant-Based Meat & Fish Alternatives
Storage Type	Frozen
Erudus ID	989964c3833947f8a2962ef133df76d7
Specification Type	Alternatives (Vegetarian and Vegan)



Inner Component GTIN	8720726586207
Outer Case GTIN	8720726586214



INGREDIENTS

Ingredient Declaration

Water, plant protein (pea, rice) (19%), refined coconut fat, refined rapeseed oil, flavourings (contains **mustard**), thickeners (methyl cellulose, tara gum), maltodextrin, salt, spices, yeast extract, concentrated caramelised pear juice, edible casing (rice starch, stabiliser (carrageenan)), vitamin B3, vitamin B6, vitamin B12, iron, zinc, raspberry juice, colour (beetroot red).

ALLERGENS

Product Contains:

Celery/Celериac	May Contain	Mustard	Yes
Cereals Containing Gluten	No	Nuts (Tree)	No
Barley	No	Almond nuts	No
Oats	No	Brazil nuts	No
Rye	No	Cashew nuts	No
Wheat (including Spelt and Khorasan)	No	Hazelnuts	No
Crustacea	No	Macadamia (Queensland) nuts	No
Eggs	No	Pecan nuts	No
Fish	No	Pistachio nuts	No
Lupin	May Contain	Walnuts	No
Milk	No	Peanuts	No
Molluscs	No	Sesame Seeds	No
		Soybeans	May Contain
		Sulphur Dioxide and Sulphites	No

Risk Source:

Additional Allergen Information

For allergens, see ingredients in bold. May also contain Soy, Lupin, Celery.

SUPPLEMENTARY INGREDIENT INFORMATION

Palm Oil	No
Hydrogenated Vegetable Oil/Fat	No
GM Protein/DNA	No

ADDITIVES

Product Contains:

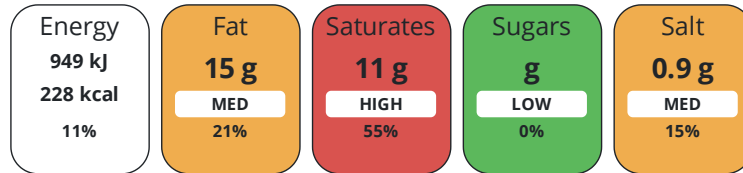
Artificial Preservatives No

DIET SUITABILITY

Vegan Diet	Suitable for	Vegetarian Diet	Suitable for
Halal Diet	No	Kosher Diet	No

NUTRITIONAL INFORMATION

Each 100g/ml portion contains:



of your reference intake.

Typical values per 100g/ml : Energy 228kcal / 949kj

Nutrient	per 100g	RI per 100g	per 100g serving	RI per 100g serving
Energy (kJ)	949 kJ	11%	949 kJ	11%
Energy (kcal)	228 kcal	11%	228 kcal	11%
Fat	15 g	21%	15 g	21%
of which Saturates	11 g	55%	11 g	55%
Carbohydrate	3.5 g	1%	3.5 g	1%
of which Sugars	0 g	0%	-	-
Fibre	3.5 g		3.5 g	
Protein	18 g	36%	18 g	36%
Salt	0.9 g	15%	0.9 g	15%
Serving Size	100 g			
Number of Servings	10 Servings			

VITAMINS AND MINERALS

Nutrient	per 100g	RI per 100g	per 100g serving	RI per 100g serving
Vitamin B12	2.9 µg	116%	2.9 µg	116%
Iron	7.4 mg	53%	7.4 mg	53%
Zinc	4.7 mg	47%	4.7 mg	47%

SUPPLEMENTARY NUTRITIONAL INFORMATION

HANDLING &
STORAGE
INFORMATION

Directions For Use

In a pan, heat up a small amount of oil over medium heat. Add the sausages and fry for about 10 minutes until browned, it is recommended to turn several times. The product must be thoroughly heated until it has reached a core temperature of 72°C before consumption.

Storage Instructions

Always keep product frozen at or below (-18°C) We do not recommend thawing this product before cooking.

Storage Instructions After Opening

The product is intended to be used straight from the freezer. If thawed, do not refreeze.

Shelf Life from Time of Production	365 Days	Exempt From Shelf Life Labelling	No
---	----------	---	----

ACCREDITATIONS/
CERTIFICATIONS/
ASSURANCE
SCHEMES



ORIGIN

Product Country of Origin/Place of Netherlands (the)

Provenance

Additional Origin Details

Best

PRODUCT
CHARACTERISTICS

Standards Testing

Do you undertake trend analysis of microbiological results?	Yes	Is shelf life testing undertaken?	Yes
--	-----	--	-----

Microbiological Standards

Organism	Description	Frequency	Target	Maximum	Sample (g or ml)
Coliforms (cfu/g or ml)		Every Batch	<5000	1000	1
E. Coli (cfu/g or ml)		Every Batch	<100	50	1
Listeria Monocytogenes (cfu/g or ml)		Every Batch	=0	0	25
Staphylococcus Aureus (cfu/g or ml)		Every Batch	<50	100	1
Salmonella (cfu/g or ml)		Every Batch	=0	0	25
Moulds (cfu/g or ml)		Every Batch	<200	100	1
Aerobic Colony Count (ACC) (cfu/g or ml)		Every Batch	<100000	1000000	1

Physical Standards

Test	Description	Frequency	Target	Range	Sample (g or ml)
Dimensions Diameter (mm)		Every Batch	=32	32 to 32	100
Dimensions Length (mm)		Every Batch	=10	10 to 10	100
Weight (g)		Every Batch	=1000	1000 to 1000	100

CONFIGURATION

Case Configuration

Inner Pack Configuration

Total Quantity of Inner Components in Outer Case	4 Units	Count per Inner Component	10
---	---------	----------------------------------	----

Outer Case

Is the Outer Case Splittable?	Yes
--------------------------------------	-----

PRODUCT WEIGHTS

Inner Component	
Variable Weight Consumer Item	No
Inner Component Weight	1 kg
Outer Case	
Outer Case Gross Weight	4.3 kg
Outer Case Net Weight	4 kg

PRODUCT DIMENSIONS

Inner Component	
Inner Component Depth	300 mm
Inner Component Width	240 mm
Inner Component Height	50 mm
Outer Case	
Outer Case Depth	398 mm
Outer Case Width	213 mm
Outer Case Height	157 mm

PALLET INFORMATION

Quantity of Cases Per Pallet Layer	12 Cases	Pallet Height	1.72 MTR
Quantity of Layers Per Pallet	10 Layers	Pallet Gross Weight	539.6 kg
Quantity of Cases Per Pallet	120 Cases		

PACKAGING

Inner Component Packaging						
Type	Materials	Weight	Recycled Plastic %	Recyclable	Returnable	Composite
Poly Treated PET/PE	Plastic	32.8 g	- %			
Outer Case Packaging						
Type	Materials	Weight	Recycled Plastic %	Recyclable	Returnable	Composite
Case	Paper/Cardboard	210 g	- %			

OTHER INFORMATION

Commodity Code	210690004
-----------------------	-----------

CONTACT INFORMATION

Address
 Redefine Meat
 We Work
 5 Merchant Square
 London
 W2 1AY
 United Kingdom

 P: (Phone) 07564 316702

Commercial Contact
 Vivian Bielak
 UK Wholesale Controller
 vivi@redefinemeat.com

P: (Phone) 07564316702

The information on the [Erudus System](#) has been supplied by the manufacturers of the products and, whilst the owners of the Erudus System take steps to ensure the information is regularly updated, they give no warranty and no guarantee that the information is accurate. Product information and ingredients may change, please always read product labels carefully in addition to using the information provided by Erudus.

We do not accept liability for any inaccuracies or incorrect information contained on this site.
Please visit <http://www.erudus.com/terms-and-conditions> for full terms and conditions.