

Changed Jan 24, 2024 15:49

Reviewed Jan 24, 2024 15:49

Erudus ID 19cc40c116d84369b8ff0504906ad14c

Version 2.0

11533

FLORA ORIGINAL 8X250G TRT DB UK MB

Flora Original 250g 8x250g

PRODUCT DESCRIPTION

59% vegetable fat spread

| | |
|---------------------------|-------------------------------------|
| Brand | Flora |
| Manufacturer Product Code | 91306803 |
| Product Type | Food |
| Product Category | Vegan Butter and Margarine |
| Storage Type | Chilled |
| Erudus ID | 19cc40c116d84369b8ff0504906ad14c |
| Specification Type | Alternatives (Vegetarian and Vegan) |
| Inner Component GTIN | 8719200264328 |



INGREDIENTS

Ingredient Declaration
Plant oils (rapeseed, sunflower, linseed), water, coconut fat, salt (1.3%), plant based emulsifier (lecithin), natural flavourings, vitamin A.

ALLERGENS

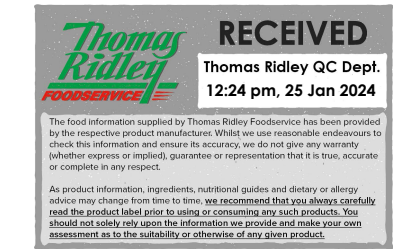
| | |
|--------------------------------------|----|
| <i>Product Contains:</i> | |
| Celery/Celeriac | No |
| Cereals Containing Gluten | No |
| Barley | No |
| Oats | No |
| Rye | No |
| Wheat (including Spelt and Khorasan) | No |
| Crustacea | No |
| Eggs | No |
| Fish | No |
| Lupin | No |
| Milk | No |
| Molluscs | No |
| Mustard | No |
| Nuts (Tree) | No |
| Almond nuts | No |
| Brazil nuts | No |
| Cashew nuts | No |
| Hazelnuts | No |
| Macadamia (Queensland) nuts | No |
| Pecan nuts | No |
| Pistachio nuts | No |
| Walnuts | No |
| Peanuts | No |
| Sesame Seeds | No |
| Soybeans | No |
| Sulphur Dioxide and Sulphites | No |

Additional Allergen Information

N/A

SUPPLEMENTARY INGREDIENT INFORMATION

| | |
|--------------------------------|----|
| Palm Oil | No |
| Hydrogenated Vegetable Oil/Fat | No |
| GM Protein/DNA | No |



ADDITIVES

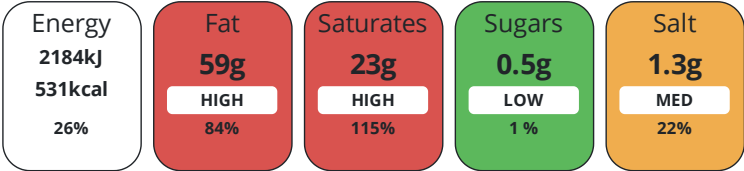
Product Contains:

| | | | |
|------------------------------|--------------|--------------------------|--------------|
| Artificial Antioxidants | No | Artificial Flavourings | No |
| Artificial Colours | No | Artificial Preservatives | No |
| Artificial Flavour Enhancers | No | Artificial Sweeteners | No |
| Vegan Diet | Suitable for | Vegetarian Diet | Suitable for |
| Halal Diet | No | Kosher Diet | No |

DIET
SUITABILITY

NUTRITIONAL
INFORMATION

Each 100g/ml portion contains:



of your reference intake.

Typical values per 100g/ml : Energy 531kcal / 2184kj

| Nutrient | per 100g | RI per 100g | per 10g serving | RI per 10g serving |
|---------------------------|----------|-------------|-----------------|--------------------|
| Energy (kJ) | 2184 kJ | 26% | 218.4 kJ | 3% |
| Energy (kcal) | 531 kcal | 27% | 53.1 kcal | 3% |
| Fat | 59 g | 84% | 5.9 g | 8% |
| of which Saturates | 23 g | 115% | 2.3 g | 12% |
| of which Mono-unsaturates | 20 g | | 2 g | |
| of which Polyunsaturates | 15 g | | 1.5 g | |
| Carbohydrate | < 0.5 g | 0% | 0.1 g | 0% |
| of which Sugars | < 0.5 g | 1% | 0.1 g | 0% |
| Fibre | < 0.5 g | | 0.1 g | |
| Protein | < 0.5 g | 1% | 0.1 g | 0% |
| Salt | 1.3 g | 22% | 0.1 g | 2% |
| Sodium | 520 mg | | 52 mg | |

Serving Size 10 g

VITAMINS AND
MINERALS

| Nutrient | per 100g | RI per 100g | per 10g serving | RI per 10g serving |
|-----------|----------|-------------|-----------------|--------------------|
| Vitamin A | 120 µg | 15% | 12 µg | 2% |

SUPPLEMENTARY
NUTRITIONAL
INFORMATION

Cholesterol per 100 g/ml (UK/FR) 0 g

HANDLING &
STORAGE
INFORMATION

Directions For Use
Ready to use. Delicious for spreading, cooking and baking

Storage Instructions
Keep chilled (2-8°C)

| | | | |
|------------------------------------|----------|----------------------------------|----|
| Shelf Life from Time of Production | 105 Days | Exempt From Shelf Life Labelling | No |
|------------------------------------|----------|----------------------------------|----|

ACCREDITATIONS/
CERTIFICATIONS/
ASSURANCE
SCHEMES



| | | | | | | | |
|--------------------|--|-----------------|-----------|--------------------------|---------------------|------------|-----------|
| ORIGIN | Product Country of Origin/Place of Provenance | | Poland | | | | |
| | Provenance | | | | | | |
| | Additional Origin Details | | | | | | |
| | Katowice | | | | | | |
| CONFIGURATION | Case Configuration | | | Inner Pack Configuration | | | |
| | Total Quantity of Inner Components in Outer Case | | 8 Units | | | | |
| | Is the Outer Case Splittable? | | | | | | |
| PRODUCT WEIGHTS | Inner Component | | | | | | |
| | Variable Weight Consumer Item | | No | | | | |
| | Inner Component Weight | | 250 g | | | | |
| | Outer Case | | | | | | |
| | Outer Case Gross Weight | | 2.23 kg | | | | |
| | Outer Case Net Weight | | 2 kg | | | | |
| PRODUCT DIMENSIONS | Inner Component | | | | | | |
| | Inner Component Depth | | 87 mm | | | | |
| | Inner Component Width | | 126 mm | | | | |
| | Inner Component Height | | 50 mm | | | | |
| | Outer Case | | | | | | |
| | Outer Case Depth | | 355 mm | | | | |
| | Outer Case Width | | 260 mm | | | | |
| | Outer Case Height | | 54 mm | | | | |
| PALLET INFORMATION | Quantity of Cases Per Pallet Layer | | 11 Cases | | Pallet Height | | 1.78 MTR |
| | Quantity of Layers Per Pallet | | 29 Layers | | Pallet Gross Weight | | 766 kg |
| | Quantity of Cases Per Pallet | | 319 Cases | | | | |
| PACKAGING | Inner Component Packaging | | | | | | |
| | Type | Materials | Weight | Recycled Plastic % | Recyclable | Returnable | Composite |
| | Tub | Plastic | 13.35 g | - % | | | |
| | Tub | Aluminium | 0.9 g | - % | | | |
| | Outer Case Packaging | | | | | | |
| | Type | Materials | Weight | Recycled Plastic % | Recyclable | Returnable | Composite |
| | Case | Paper/Cardboard | 124 g | - % | | | |
| | Transport Packaging | | | | | | |
| | Type | Materials | Weight | Recycled Plastic % | Recyclable | Returnable | Composite |
| | Other | Wood | 22000 g | - % | | | |
| OTHER INFORMATION | Manufacturer Comments | | | | | | |
| | - Natural ingredients - 100% plant based - Suitable for vegans - Gluten Free - Dairy free - Palm oil free - Free from preservatives, artificial colour and flavours - 77% less climate impact then dairy butter * *Life Cycle Assessment tool(developed by Quantis) comparing Flora and dairy butter(2023). For the value in your country see www.flora.com/sustainability | | | | | | |

CONTACT
INFORMATION

Address

Upfield Foods UK
Upfield UK Services Limited
14-21 Rushworth Street
London
London
SE1 0RB
United Kingdom

~~P. (Phone)~~ TBC

Technical Contact

Alessandra Gangemi
Technical specialist
alessandra.gangemi@upfield.com

The information on the [Erudus System](#) has been supplied by the manufacturers of the products and, whilst the owners of the Erudus System take steps to ensure the information is regularly updated, they give no warranty and no guarantee that the information is accurate. Product information and ingredients may change, please always read product labels carefully in addition to using the information provided by Erudus.

We do not accept liability for any inaccuracies or incorrect information contained on this site.
Please visit <http://www.erudus.com/terms-and-conditions> for full terms and conditions.