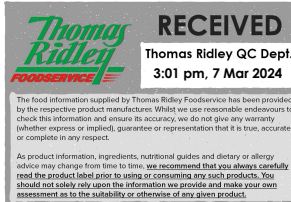


Changed Mar 07, 2024 11:58

Reviewed Mar 07, 2024 11:58

Erudus ID 6a40bab115c34637a78ad7c2079db146

Version 2.0



Redefine Meat Plant Based Premium Burger, 1.2kg

Plant Based Premium Burger 4x1kg

PRODUCT DESCRIPTION

Plant-based Redefine Premium Burger allows vegans, as well as meat lovers, to enjoy a great meat-eating experience, without compromising on taste. Redefine Premium Burger is created specifically to delight the senses with its meaty flavour and coarse ground texture. It is simply the perfect foundation for building a top notch burger meal. * Redefine Meat Ltd. products are plant-based, non-GMO and do not contain any animal-based ingredients or by-products.

Brand	Redefine Meat
Manufacturer Product Code	422014
Product Type	Food
Product Category	Other Vegetarian & Vegan Alternatives
Storage Type	Frozen
Erudus ID	6a40bab115c34637a78ad7c2079db146
Specification Type	Alternatives (Vegetarian and Vegan)
Inner Component GTIN	8720726586344
Outer Case GTIN	8720726586443



INGREDIENTS

Ingredient Declaration

Water, plant protein (**soy**, pea), refined coconut fat, refined rapeseed oil, flavourings (contain **mustard**), thickener (methyl cellulose), maltodextrin, dehydrated potato flakes, mushroom extract, caramelised pear juice concentrate, raising agent (sodium bicarbonate), salt, raspberry juice, vitamins and minerals (B3, B6, B12, iron, zinc), colour (beetroot red).

ALLERGENS

Product Contains:

Celery/Celериac	May Contain	Mustard	Yes
Cereals Containing Gluten	No	Nuts (Tree)	No
Barley	No	Almond nuts	No
Oats	No	Brazil nuts	No
Rye	No	Cashew nuts	No
Wheat (including Spelt and Khorasan)	No	Hazelnuts	No
Crustacea	No	Macadamia (Queensland) nuts	No
Eggs	No	Pecan nuts	No
Fish	No	Pistachio nuts	No
Lupin	May Contain	Walnuts	No
Milk	No	Peanuts	No
Molluscs	No	Sesame Seeds	No
		Soybeans	Yes
		Sulphur Dioxide and Sulphites	No

Risk Source:

Additional Allergen Information

For allergens, see ingredients in bold. May also contain Lupin and Celery.

SUPPLEMENTARY
INGREDIENT
INFORMATION

Palm Oil	No
Hydrogenated Vegetable Oil/Fat	No
GM Protein/DNA	No

ADDITIVES

Product Contains:

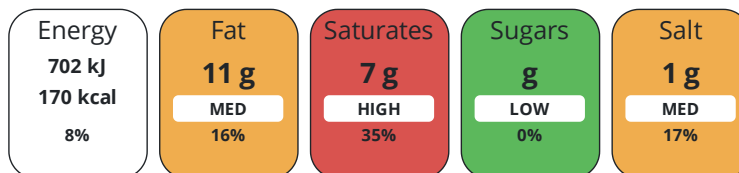
Artificial Colours	No	Artificial Preservatives	No
---------------------------	----	---------------------------------	----

DIET
SUITABILITY

Vegan Diet	Suitable for	Vegetarian Diet	Suitable for
Halal Diet	Suitable for	Kosher Diet	Suitable for

NUTRITIONAL
INFORMATION

Each 100g/ml portion contains:



of your reference intake.

Typical values per 100g/ml : Energy 170kcal / 702kJ

Nutrient	per 100g	RI per 100g	per 140g serving	RI per 140g serving
Energy (kJ)	702 kJ	8%	982.8 kJ	12%
Energy (kcal)	170 kcal	9%	238 kcal	12%
Fat	11 g	16%	15.4 g	22%
of which Saturates	7 g	35%	9.8 g	49%
Carbohydrate	4 g	2%	5.6 g	2%
of which Sugars	0 g	0%	-	
Fibre	5 g		7 g	
Protein	11 g	22%	15.4 g	31%
Salt	1 g	17%	1.4 g	23%
Serving Size	140 g			

VITAMINS AND
MINERALS

Nutrient	per 100g	RI per 100g	per 140g serving	RI per 140g serving
Vitamin B12	3 µg	120%	4.2 µg	168%
Zinc	4.2 mg	42%	5.9 mg	59%

SUPPLEMENTARY
NUTRITIONAL
INFORMATION

HANDLING & STORAGE INFORMATION

Directions For Use

THIS PRODUCT IS PREPARED DIRECTLY FROM THE FREEZER. THERE IS NO NEED TO DEFROST. REMOVE THE PRODUCT FROM THE FREEZER AND THEN: IN A SAUTÉ OR FRYING PAN: 1. Heat a few tablespoons of oil in a sauté/frying pan over medium heat. 2. Add the frozen Redefine Premium Burger patty and cook, covered, for 5 minutes. 3. Uncover the pan, flip the patty, and continue to cook for an additional 9 minutes, continuously flipping the patty at 3-minute intervals, until the burger is cooked through and nicely browned. 4. When done, the measured internal temperature of the patty should read 72°C. GRILLING: 1. Heat a grill to high. 2. Place the patty on the heated grill and cook for a total of 15 minutes, making sure to flip the patty several times during cooking. 3. When ready, the patty will be nicely browned and the measured internal temperature at the centre of the patty should read 72°C.

Storage Instructions

Keep frozen at or below (-18°C) for up to 12 months, before use. We do not recommend thawing this product before cooking Do not refreeze

Shelf Life from Time of Production	365 Days	Exempt From Shelf Life Labelling	No
---	----------	---	----

ACCREDITATIONS/ CERTIFICATIONS/ ASSURANCE SCHEMES



ORIGIN

Product Country of Origin/Place of Provenance Netherlands (the)

Additional Origin Details

Best

PRODUCT CHARACTERISTICS

Standards Testing

Do you undertake trend analysis of microbiological results?	Yes	Is shelf life testing undertaken?	Yes
--	-----	--	-----

Microbiological Standards

Organism	Description	Frequency	Target	Maximum	Sample (g or ml)
Coliforms (cfu/g or ml)		Every Batch	<5000	1000	1
E. Coli (cfu/g or ml)		Every Batch	<100	50	1
Listeria Monocytogenes (cfu/g or ml)		Every Batch	=0	0	25
Staphylococcus Aureus (cfu/g or ml)		Every Batch	<50	100	1
Salmonella (cfu/g or ml)		Every Batch	=0	0	25
Moulds (cfu/g or ml)		Every Batch	<200	100	1
Aerobic Colony Count (ACC) (cfu/g or ml)		Every Batch	<100000	1000000	1

CONFIGURATION

Case Configuration

Total Quantity of Inner Components in Outer Case	4 Units
---	---------

Is the Outer Case Splittable?	Yes
--------------------------------------	-----

Inner Pack Configuration

Count per Inner Component	8
----------------------------------	---

PRODUCT WEIGHTS

Inner Component

Variable Weight Consumer Item	No
--------------------------------------	----

Inner Component Weight	1 kg
-------------------------------	------

Outer Case

Outer Case Gross Weight	5.03 kg
--------------------------------	---------

Outer Case Net Weight	4.48 kg
------------------------------	---------

PRODUCT DIMENSIONS

Inner Component	
Inner Component Depth	200 mm
Inner Component Width	195 mm
Inner Component Height	50 mm
Outer Case	
Outer Case Depth	396 mm
Outer Case Width	217 mm
Outer Case Height	130 mm

PALLET INFORMATION

Quantity of Cases Per Pallet Layer	12 Cases	Pallet Height	1.57 MTR
Quantity of Layers Per Pallet	11 Layers	Pallet Gross Weight	684 kg
Quantity of Cases Per Pallet	132 Cases		

PACKAGING

Inner Component Packaging						
Type	Materials	Weight	Recycled Plastic %	Recyclable	Returnable	Composite
Poly Treated PET/PE	Plastic	25.7 g	- %			
Outer Case Packaging						
Type	Materials	Weight	Recycled Plastic %	Recyclable	Returnable	Composite
Case	Paper/Cardboard	230 g	- %			

OTHER INFORMATION

Commodity Code	210690004
-----------------------	-----------

CONTACT INFORMATION

Address
 Redefine Meat
 We Work
 5 Merchant Square
 London
 W2 1AY
 United Kingdom

P: (Phone) 07564 316702

Commercial Contact
 Vivian Bielak
 UK Wholesale Controller
 vivi@redefinemeat.com

P: (Phone) 07564316702

The information on the [Erudus System](#) has been supplied by the manufacturers of the products and, whilst the owners of the Erudus System take steps to ensure the information is regularly updated, they give no warranty and no guarantee that the information is accurate. Product information and ingredients may change, please always read product labels carefully in addition to using the information provided by Erudus.

We do not accept liability for any inaccuracies or incorrect information contained on this site.
 Please visit <http://www.erudus.com/terms-and-conditions> for full terms and conditions.