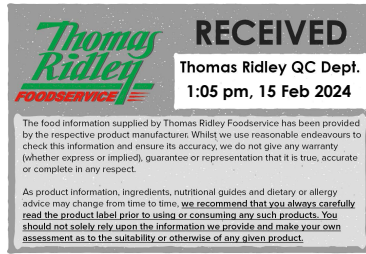


Changed Feb 13, 2024 14:02

Reviewed Feb 13, 2024 14:02

Erudus ID e4e133cfb8f94c698d677be645b85263

Version 2.0



11625

Black MUSTARD Seeds 6x500g

Black Mustard Seeds 6x500g 6x500g

PRODUCT DESCRIPTION

The organically grown dried seeds of Brassica juncea

Brand	Greenfields London Ltd
Manufacturer Product Code	2841
Product Type	Food
Product Category	Chillies, Herbs, & Spices
Storage Type	Ambient
Erudus ID	e4e133cfb8f94c698d677be645b85263
Specification Type	Generic
Inner Component GTIN	5027906040287
Outer Case GTIN	5027976041597



INGREDIENTS

Ingredient Declaration

100% MUSTARD Seed

ALLERGENS

Product Contains:

	Yes	No
Celery/Celeriac	No	Yes
Cereals Containing Gluten	No	Yes
Barley	No	Yes
Oats	No	Yes
Rye	No	Yes
Wheat (including Spelt and Khorasan)	No	Yes
Crustacea	No	Yes
Eggs	No	Yes
Fish	No	Yes
Lupin	No	Yes
Milk	No	Yes
Molluscs	No	Yes
Mustard	Yes	No
Nuts (Tree)	No	Yes
Almond nuts	No	Yes
Brazil nuts	No	Yes
Cashew nuts	No	Yes
Hazelnuts	No	Yes
Macadamia (Queensland) nuts	No	Yes
Pecan nuts	No	Yes
Pistachio nuts	No	Yes
Walnuts	No	Yes
Peanuts	No	Yes
Sesame Seeds	No	Yes
Soybeans	No	Yes
Sulphur Dioxide and Sulphites	No	Yes

Additional Allergen Information

Where products are indicated as not having an allergen present this refers to the product not being formulated or wholly derived from the particular ingredient. Allergen handling policies and procedures are in place through the supply chain to reduce the likelihood of cross contamination from allergens. Unless otherwise stated in the table above products are supplied, to the best of our knowledge, free from nuts and nut derivatives. Due diligence checks of the supply chain are in place, however due to the nature of the products supplied it is not possible for the company to guarantee that no cross contamination has taken place at some point in the supply chain prior to delivery to our premises.

SUPPLEMENTARY
INGREDIENT
INFORMATION

Palm Oil	No
Hydrogenated Vegetable Oil/Fat	No
GM Protein/DNA	No

ADDITIVES

Product Contains:

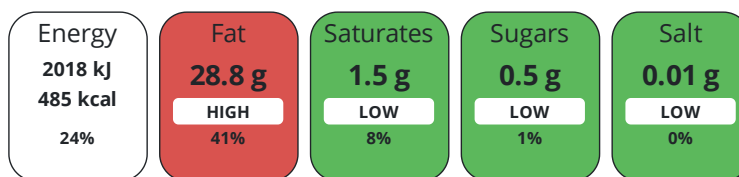
Artificial Antioxidants	No	Artificial Flavourings	No
Artificial Colours	No	Artificial Preservatives	No
Artificial Flavour Enhancers	No	Artificial Sweeteners	No

DIET
SUITABILITY

Vegan Diet	Suitable for	Vegetarian Diet	Suitable for
Halal Diet	Suitable for	Kosher Diet	Suitable for

NUTRITIONAL
INFORMATION

Each 100g/ml portion contains:



of your reference intake.

Typical values per 100g/ml : Energy 485kcal / 2018kJ

Nutrient	per 100g	RI per 100g
Energy (kJ)	2018 kJ	24%
Energy (kcal)	485 kcal	24%
Fat	28.8 g	41%
of which Saturates	1.5 g	8%
Carbohydrate	20.2 g	8%
of which Sugars	< 0.5 g	1%
Protein	28.9 g	58%
Salt	0.01 g	0%

SUPPLEMENTARY
NUTRITIONAL
INFORMATION

HFSS (HIGH IN
FAT, SALT AND
SUGAR)
HANDLING &
STORAGE
INFORMATION

HFSS Status	No
--------------------	----

Directions For Use

As required

Storage Instructions

Store in a dry, cool place

Shelf Life from Time of Production	500 Days	Exempt From Shelf Life Labelling	No
---	----------	---	----

ACCREDITATIONS/
CERTIFICATIONS/
ASSURANCE
SCHEMES



Other Accreditation

Halal - HFA Kosher - KLBD

ORIGIN	Product Country of Origin/Place of Provenance India						
	Additional Origin Details		Various of North Africa, Europe and part of Asia				
PRODUCT CHARACTERISTICS	Standards Testing						
	Do you undertake trend analysis of microbiological results?	No	Is shelf life testing undertaken?		Yes		
	Microbiological Standards						
	Organism	Description	Frequency	Target	Maximum	Sample (g or ml)	
	E. Coli (cfu/g or ml)		Every Batch	<1000	1000	1000	
	Salmonella (cfu/g or ml)		Every Batch	<0	0	25	
	Yeast (cfu/g or ml)		Every Batch	<1000000	1000000	1000	
	Moulds (cfu/g or ml)		Every Batch	<1000000	1000000	1000	
	Total Viable Count (TVC) (cfu/g or ml)		Every Batch	<10000000	10000000	1000	
CONFIGURATION	Case Configuration		Inner Pack Configuration				
	Total Quantity of Inner Components in Outer Case	6 Units					
	Is the Outer Case Splittable?	Yes					
PRODUCT WEIGHTS	Inner Component						
	Variable Weight Consumer Item	No					
	Inner Component Weight	500 g					
	Net Drained Weight	0.5 kg					
	Outer Case						
	Outer Case Gross Weight	3.3 kg					
	Outer Case Net Weight	3 kg					
PRODUCT DIMENSIONS	Inner Component						
	Inner Component Depth	120 mm					
	Inner Component Width	140 mm					
	Inner Component Height	140 mm					
	Outer Case						
	Outer Case Depth	400 mm					
	Outer Case Width	140 mm					
	Outer Case Height	140 mm					
PALLET INFORMATION	Quantity of Cases Per Pallet Layer	22 Cases	Pallet Height		1.8 MTR		
	Quantity of Layers Per Pallet	6 Layers	Pallet Gross Weight		440 kg		
	Quantity of Cases Per Pallet	132 Cases					
PACKAGING	Inner Component Packaging						
	Type	Materials	Weight	Recycled Plastic %	Recyclable	Returnable	Composite
	Tub	Plastic	50 g	- %			
	Outer Case Packaging						
	Type	Materials	Weight	Recycled Plastic %	Recyclable	Returnable	Composite
	Case	Plastic	150 g	- %			
	Case	Paper/Cardboard	20 g	- %			

Transport Packaging

Type	Materials	Weight	Recycled Plastic %	Recyclable	Returnable	Composite
Other	Plastic	200 g	- %			
Other	Paper/Cardboard	150 g	- %			

OTHER INFORMATION

Commodity Code 1207501000

CONTACT INFORMATION

Address

Greenfields London Ltd
 25 Crawford Street
 London
 W1H 1PL
 United Kingdom

Technical Contact

Anna
 Greenfields Team
 anna@greenfieldsuk.co.uk

P: (Phone) 0208 997 8555

Commercial Contact

Karim Ali
 Director
 karim@greenfieldsuk.co.uk

P: (Phone) 0208 997 8555

The information on the [Erudus System](#) has been supplied by the manufacturers of the products and, whilst the owners of the Erudus System take steps to ensure the information is regularly updated, they give no warranty and no guarantee that the information is accurate. Product information and ingredients may change, please always read product labels carefully in addition to using the information provided by Erudus.

We do not accept liability for any inaccuracies or incorrect information contained on this site.
 Please visit <http://www.erudus.com/terms-and-conditions> for full terms and conditions.