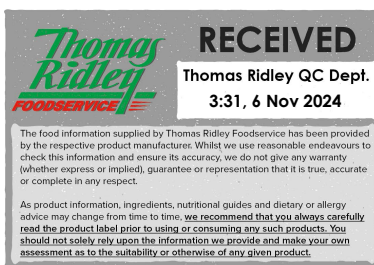


Changed Oct 29, 2024 10:55

Reviewed Oct 29, 2024 10:56

Erudus ID 787189d47d0c4553938d400721299bf2

Version 2.1



11630

Coriander Seeds 6x300g

Coriander Seeds 6x300g

PRODUCT DESCRIPTION

Coriandium Sativum (Umbelliferae)

Brand	Greenfields London Ltd
Manufacturer Product Code	2851
Product Type	Food
Product Category	Chillies, Herbs & Spices
Storage Type	Ambient
Erudus ID	787189d47d0c4553938d400721299bf2
Specification Type	Generic
Inner Component GTIN	5027906040362
Outer Case GTIN	5027976041696



INGREDIENTS

Ingredient Declaration

Coriander Seeds

ALLERGENS

Product Contains:

Celery/Celeriac	No	Mustard	No
Cereals Containing Gluten	No	Nuts (Tree)	No
Barley	No	Almond nuts	No
Oats	No	Brazil nuts	No
Rye	No	Cashew nuts	No
Wheat (including Spelt and Khorasan)	No	Hazelnuts	No
Crustacea	No	Macadamia (Queensland) nuts	No
Eggs	No	Pecan nuts	No
Fish	No	Pistachio nuts	No
Lupin	No	Walnuts	No
Milk	No	Peanuts	No
Molluscs	No	Sesame Seeds	No
		Soybeans	No
		Sulphur Dioxide and Sulphites	No

Additional Allergen Information

Where products are indicated as not having an allergen present this refers to the product not being formulated or wholly derived from the particular ingredient. Allergen handling policies and procedures are in place through the supply chain to reduce the likelihood of cross contamination from allergens. Unless otherwise stated in the table above products are supplied, to the best of our knowledge, free from celery/celeriac, cereals containing wheat, crustacea, egg, fish, lupin, milk, molluscs, mustard, nuts and nut derivatives, peanuts, sesame seeds, soybeans, sulphur dioxide and sulphites. Due diligence checks of the supply chain are in place, however due to the nature of the products supplied it is not possible for the company to guarantee that no cross contamination has taken place at some point in the supply chain prior to delivery to our premises.

SUPPLEMENTARY
INGREDIENT
INFORMATION

Palm Oil	No
Hydrogenated Vegetable Oil/Fat	No
GM Protein/DNA	No

ADDITIVES

Product Contains:

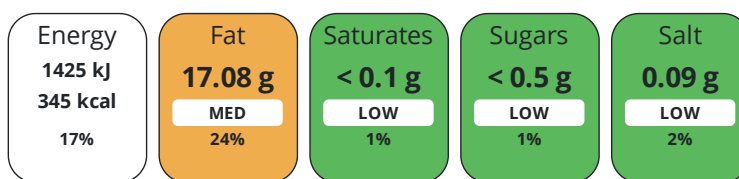
Artificial Antioxidants	No	Artificial Flavourings	No
Artificial Colours	No	Artificial Preservatives	No
Artificial Flavour Enhancers	No	Artificial Sweeteners	No

DIET
SUITABILITY

Vegan Diet	Suitable for	Vegetarian Diet	Suitable for
Halal Diet	Suitable for	Kosher Diet	Suitable for

NUTRITIONAL
INFORMATION

Each 100g/ml portion contains:



of your reference intake.

Typical values per 100g/ml : Energy 345kcal / 1425kj

Nutrient	per 100g	RI per 100g
Energy (kJ)	1425 kJ	17%
Energy (kcal)	345 kcal	17%
Fat	17.08 g	24%
of which Saturates	< 0.1 g	1%
Carbohydrate	13.1 g	5%
of which Sugars	< 0.5 g	1%
Fibre	25.1 g	
Protein	12.04 g	24%
Salt	0.09 g	2%
Sodium	2.5 mg	

SUPPLEMENTARY
NUTRITIONAL
INFORMATION

HFSS (HIGH IN
FAT, SALT AND
SUGAR)
HANDLING &
STORAGE
INFORMATION

HFSS Status	No
--------------------	----

Directions For Use

As required

Storage Instructions

Store in a dry, cool place

Shelf Life from Time of Production	500 Days
---	----------

ACCREDITATIONS/
CERTIFICATIONS/
ASSURANCE
SCHEMES
ORIGIN

SALSA (Safe & Local Supplier Approval)	Other Accreditation
---	----------------------------

Product Country of Origin/Place of	India
---	-------

Provenance

Standards Testing

PRODUCT
CHARACTERISTICS

Do you undertake trend analysis of microbiological results?	No	Is shelf life testing undertaken?	Yes
--	----	--	-----

Microbiological Standards

Organism	Description	Frequency	Target	Maximum	Sample (g or ml)
Bacillus Cereus (cfu/g or ml)		Every Batch	<1000	1000	1000
Coliforms (cfu/g or ml)		Every Batch	<10000	10000	1000
E. Coli (cfu/g or ml)		Every Batch	<100	100	1000
Salmonella (cfu/g or ml)		Every Batch	<0	0	1000
Yeast (cfu/g or ml)		Every Batch	<1000000	1000000	1000
Moulds (cfu/g or ml)		Every Batch	<1000000	1000000	1000

CONFIGURATION

Case Configuration

Inner Pack Configuration

Total Quantity of Inner Components in Outer Case	6 Units
Is the Outer Case Splittable?	Yes

PRODUCT WEIGHTS

Inner Component

Variable Weight Consumer Item	No
Inner Component Weight	300 g
Net Drained Weight	0.3 kg
e mark	Yes

Outer Case

Outer Case Gross Weight	2.1 kg
Outer Case Net Weight	1.8 kg

PRODUCT DIMENSIONS

Inner Component

Inner Component Depth	120 mm
Inner Component Width	140 mm
Inner Component Height	140 mm

Outer Case

Outer Case Depth	400 mm
Outer Case Width	140 mm
Outer Case Height	280 mm

PALLET INFORMATION

Quantity of Cases Per Pallet Layer	22 Cases	Pallet Height	1.8 MTR
Quantity of Layers Per Pallet	6 Layers	Pallet Gross Weight	277 kg
Quantity of Cases Per Pallet	132 Cases		

PACKAGING

Inner Component Packaging

Type	Materials	Weight	Recycled Plastic %	Recyclable	Returnable	Composite
Tub	Plastic	50 g	- %			

Outer Case Packaging

Type	Materials	Weight	Recycled Plastic %	Recyclable	Returnable	Composite
Box	Paper/Cardboard	150 g	- %			

Transport Packaging

Type	Materials	Weight	Recycled Plastic %	Recyclable	Returnable	Composite
Other	Plastic	200 g	- %			
Other	Paper/Cardboard	150 g	- %			

OTHER INFORMATION

Commodity Code 0909210000

CONTACT INFORMATION

Address

Greenfields London Ltd
 25 Crawford Street
 London
 W1H 1PL
 United Kingdom

Technical Contact

Anna
 Greenfields Team
 anna@greenfieldsuk.co.uk

P: (Phone) 0208 997 8555

Commercial Contact

Karim Ali
 Director
 karim@greenfieldsuk.co.uk

P: (Phone) 0208 997 8555

The information on the [Erudus System](#) has been supplied by the manufacturers of the products and, whilst the owners of the Erudus System take steps to ensure the information is regularly updated, they give no warranty and no guarantee that the information is accurate. Product information and ingredients may change, please always read product labels carefully in addition to using the information provided by Erudus.

We do not accept liability for any inaccuracies or incorrect information contained on this site. Please visit <http://www.erudus.com/terms-and-conditions> for full terms and conditions.