

Changed Oct 29, 2024 13:01

Reviewed Oct 29, 2024 13:01

Erudus ID fbb841e86ea3415480a4dd4f3079e3be

Version 2.1

11645

# Ground Nutmeg 6x500g

Ground Nutmeg 6x500g

## PRODUCT DESCRIPTION

Dried ground kernels of Myristica fragrans

Brand	Greenfields London Ltd
Manufacturer Product Code	2885
Product Type	Food
Product Category	Chillies, Herbs & Spices
Storage Type	Ambient
Erudus ID	fbb841e86ea3415480a4dd4f3079e3be
Specification Type	Generic
Inner Component GTIN	5027906040638
Outer Case GTIN	5027976042037



## INGREDIENTS

### Ingredient Declaration

Nutmeg

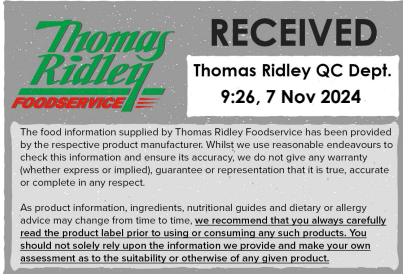
## ALLERGENS

Product Contains:

<b>Celery/Celeriac</b>	No	<b>Mustard</b>	No
<b>Cereals Containing Gluten</b>	No	<b>Nuts (Tree)</b>	No
<b>Barley</b>	No	<b>Almond nuts</b>	No
<b>Oats</b>	No	<b>Brazil nuts</b>	No
<b>Rye</b>	No	<b>Cashew nuts</b>	No
<b>Wheat (including Spelt and Khorasan)</b>	No	<b>Hazelnuts</b>	No
<b>Crustacea</b>	No	<b>Macadamia (Queensland) nuts</b>	No
<b>Eggs</b>	No	<b>Pecan nuts</b>	No
<b>Fish</b>	No	<b>Pistachio nuts</b>	No
<b>Lupin</b>	No	<b>Walnuts</b>	No
<b>Milk</b>	No	<b>Peanuts</b>	No
<b>Molluscs</b>	No	<b>Sesame Seeds</b>	No
		<b>Soybeans</b>	No
		<b>Sulphur Dioxide and Sulphites</b>	No

### Additional Allergen Information

Where products are indicated as not having an allergen present this refers to the product not being formulated or wholly derived from the particular ingredient. Allergen handling policies and procedures are in place through the supply chain to reduce the likelihood of cross contamination from allergens. Unless otherwise stated in the table above products are supplied, to the best of our knowledge, free from celery/celeriac, cereals containing wheat, crustacea, egg, fish, lupin, milk, molluscs, mustard, nuts and nut derivatives, peanuts, sesame seeds, soybeans, sulphur dioxide and sulphites. Due diligence checks of the supply chain are in place, however due to the nature of the products supplied it is not possible for the company to guarantee that no cross contamination has taken place at some point in the supply chain prior to delivery to our premises.



SUPPLEMENTARY  
INGREDIENT  
INFORMATION

<b>Palm Oil</b>	No
<b>Hydrogenated Vegetable Oil/Fat</b>	No
<b>GM Protein/DNA</b>	No

ADDITIVES

*Product Contains:*

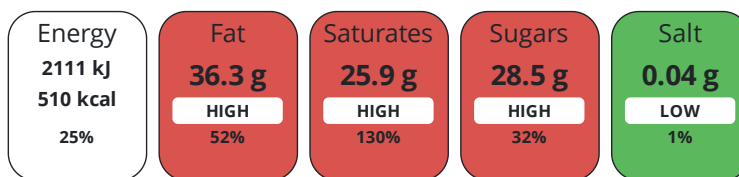
<b>Artificial Antioxidants</b>	No	<b>Artificial Flavourings</b>	No
<b>Artificial Colours</b>	No	<b>Artificial Preservatives</b>	No
<b>Artificial Flavour Enhancers</b>	No	<b>Artificial Sweeteners</b>	No

DIET  
SUITABILITY

<b>Vegan Diet</b>	Suitable for	<b>Vegetarian Diet</b>	Suitable for
<b>Halal Diet</b>	Suitable for	<b>Kosher Diet</b>	Suitable for

NUTRITIONAL  
INFORMATION

Each 100g/ml portion contains:



of your reference intake.

Typical values per 100g/ml : Energy 510kcal / 2111kJ

Nutrient	per 100g	RI per 100g
Energy (kJ)	2111 kJ	25%
Energy (kcal)	510 kcal	26%
Fat	36.3 g	52%
of which Saturates	25.9 g	130%
Carbohydrate	28.5 g	11%
of which Sugars	28.5 g	32%
Protein	6.9 g	14%
Salt	0.04 g	1%

SUPPLEMENTARY  
NUTRITIONAL  
INFORMATION

HFSS (HIGH IN  
FAT, SALT AND  
SUGAR)  
HANDLING &  
STORAGE  
INFORMATION

**HFSS Status** No

**Directions For Use**

As required

**Storage Instructions**

Store in a dry, cool place

**Shelf Life from Time of Production** 500 Days

ACCREDITATIONS/  
CERTIFICATIONS/  
ASSURANCE  
SCHEMES  
ORIGIN

**SALSA (Safe & Local Supplier Approval)**

**Other Accreditation**

**Product Country of Origin/Place of** Indonesia

**Provenance**

**Additional Origin Details**

India

PRODUCT  
CHARACTERISTICS

Standards Testing

<b>Do you undertake trend analysis of microbiological results?</b>	No	<b>Is shelf life testing undertaken?</b>	Yes
--	----	--	-----

Microbiological Standards

Organism	Description	Frequency	Target	Maximum	Sample (g or ml)
E. Coli (cfu/g or ml)		Every Batch	<10	10	1000
Salmonella (cfu/g or ml)		Every Batch	<0	0	25

CONFIGURATION

Case Configuration

Inner Pack Configuration

<b>Total Quantity of Inner Components in Outer Case</b>	6 Units
<b>Is the Outer Case Splittable?</b>	Yes

PRODUCT WEIGHTS

Inner Component

<b>Variable Weight Consumer Item</b>	No
<b>Inner Component Weight</b>	500 g
<b>Net Drained Weight</b>	0.5 kg
<b>e mark</b>	Yes

Outer Case

<b>Outer Case Gross Weight</b>	3.3 kg
<b>Outer Case Net Weight</b>	3 kg

PRODUCT DIMENSIONS

Inner Component

<b>Inner Component Depth</b>	120 mm
<b>Inner Component Width</b>	140 mm
<b>Inner Component Height</b>	140 mm

Outer Case

<b>Outer Case Depth</b>	400 mm
<b>Outer Case Width</b>	140 mm
<b>Outer Case Height</b>	280 mm

PALLET INFORMATION

<b>Quantity of Cases Per Pallet Layer</b>	22 Cases	<b>Pallet Type</b>	UK Standard Pallet
<b>Quantity of Layers Per Pallet</b>	6 Layers	<b>Pallet Height</b>	1.8 MTR
<b>Quantity of Cases Per Pallet</b>	132 Cases	<b>Pallet Gross Weight</b>	440 kg

PACKAGING

Inner Component Packaging

Type	Materials	Weight	Recycled Plastic %	Recyclable	Returnable	Composite
Tub	Plastic	50 g	- %			

Outer Case Packaging

Type	Materials	Weight	Recycled Plastic %	Recyclable	Returnable	Composite
Box	Paper/Cardboard	150 g	- %			

Transport Packaging

Type	Materials	Weight	Recycled Plastic %	Recyclable	Returnable	Composite
Other	Plastic	200 g	- %			
Other	Paper/Cardboard	150 g	- %			

OTHER INFORMATION

<b>Commodity Code</b>	908120000
-----------------------	-----------

CONTACT  
INFORMATION

Address

Greenfields London Ltd  
25 Crawford Street  
London  
W1H 1PL  
United Kingdom

Technical Contact

Anna  
Greenfields Team  
anna@greenfieldsuk.co.uk

P: (Phone) 0208 997 8555

Commercial Contact

Karim Ali  
Director  
karim@greenfieldsuk.co.uk

P: (Phone) 0208 997 8555

The information on the [Erudus System](#) has been supplied by the manufacturers of the products and, whilst the owners of the Erudus System take steps to ensure the information is regularly updated, they give no warranty and no guarantee that the information is accurate. Product information and ingredients may change, please always read product labels carefully in addition to using the information provided by Erudus.

We do not accept liability for any inaccuracies or incorrect information contained on this site.  
Please visit <http://www.erudus.com/terms-and-conditions> for full terms and conditions.