

Changed Oct 29, 2024 10:48

Reviewed Oct 29, 2024 10:48

Erudus ID 329de46c723d436a894af85d19c1e93a

Version 2.1

11652

Mixed Spices 6x500g

Mixed Spices 6x500g

PRODUCT DESCRIPTION

A blend of spices

Brand	Greenfields London Ltd
Manufacturer Product Code	2907
Product Type	Food
Product Category	Chillies, Herbs & Spices
Storage Type	Ambient
Erudus ID	329de46c723d436a894af85d19c1e93a
Specification Type	Generic
Inner Component GTIN	5027906040690
Outer Case GTIN	5027976042259



INGREDIENTS

Ingredient Declaration

Coriander, Cinnamon, Ginger, Nutmeg, Fennel, Cloves

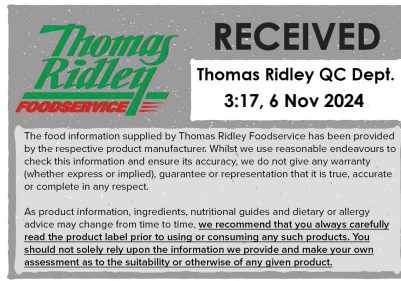
ALLERGENS

Product Contains:

Celery/Celeriac	No	Mustard	No
Cereals Containing Gluten	No	Nuts (Tree)	No
Barley	No	Almond nuts	No
Oats	No	Brazil nuts	No
Rye	No	Cashew nuts	No
Wheat (including Spelt and Khorasan)	No	Hazelnuts	No
Crustacea	No	Macadamia (Queensland) nuts	No
Eggs	No	Pecan nuts	No
Fish	No	Pistachio nuts	No
Lupin	No	Walnuts	No
Milk	No	Peanuts	No
Molluscs	No	Sesame Seeds	No
		Soybeans	No
		Sulphur Dioxide and Sulphites	No

Additional Allergen Information

Where products are indicated as not having an allergen present this refers to the product not being formulated or wholly derived from the particular ingredient. Allergen handling policies and procedures are in place through the supply chain to reduce the likelihood of cross contamination from allergens. Unless otherwise stated in the table above products are supplied, to the best of our knowledge, free from celery/celeriac, cereals containing wheat, crustacea, egg, fish, lupin, milk, molluscs, mustard, nuts and nut derivatives, peanuts, sesame seeds, soybeans, sulphur dioxide and sulphites. Due diligence checks of the supply chain are in place, however due to the nature of the products supplied it is not possible for the company to guarantee that no cross contamination has taken place at some point in the supply chain prior to delivery to our premises.



SUPPLEMENTARY
INGREDIENT
INFORMATION

Palm Oil	No
Hydrogenated Vegetable Oil/Fat	No
GM Protein/DNA	No

ADDITIVES

Product Contains:

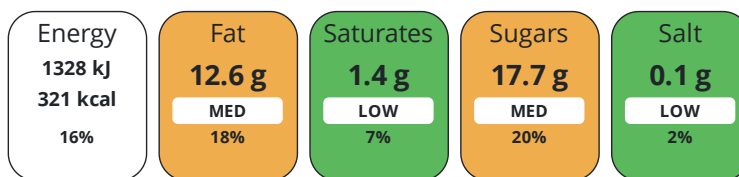
Artificial Antioxidants	No	Artificial Flavourings	No
Artificial Colours	No	Artificial Preservatives	No
Artificial Flavour Enhancers	No	Artificial Sweeteners	No

DIET
SUITABILITY

Vegan Diet	Suitable for	Vegetarian Diet	Suitable for
Halal Diet	Suitable for	Kosher Diet	Suitable for

NUTRITIONAL
INFORMATION

Each 100g/ml portion contains:



of your reference intake.

Typical values per 100g/ml : Energy 321kcal / 1328kJ

Nutrient	per 100g	RI per 100g
Energy (kJ)	1328 kJ	16%
Energy (kcal)	321 kcal	16%
Fat	12.6 g	18%
of which Saturates	1.4 g	7%
Carbohydrate	22.2 g	9%
of which Sugars	17.7 g	20%
Fibre	40.5 g	
Protein	9.6 g	19%
Salt	0.1 g	2%
Sodium	36 mg	

SUPPLEMENTARY
NUTRITIONAL
INFORMATION

HFSS (HIGH IN
FAT, SALT AND
SUGAR)

HFSS Status	No
--------------------	----

HANDLING &
STORAGE
INFORMATION

Directions For Use

As required

Storage Instructions

Store in a dry, cool place

Shelf Life from Time of Production	500 Days
---	----------

ACCREDITATIONS/
CERTIFICATIONS/
ASSURANCE
SCHEMES

SALSA (Safe & Local Supplier Approval)	
---	--

Other Accreditation

ORIGIN	Product Country of Origin/Place of Provenance Indonesia																							
PRODUCT CHARACTERISTICS	Additional Origin Details																							
	Coriander: Eastern Europe, Russia Cassia: Indonesia Ginger: China, India Fennel: India, Egypt Nutmeg: Indonesia, India Cloves: Indonesia, Sri Lanka, India																							
	Standards Testing																							
	Do you undertake trend analysis of microbiological results?	No	Is shelf life testing undertaken?		Yes																			
Microbiological Standards																								
<table border="1"> <thead> <tr> <th>Organism</th> <th>Description</th> <th>Frequency</th> <th>Target</th> <th>Maximum</th> <th>Sample (g or ml)</th> </tr> </thead> <tbody> <tr> <td>E. Coli (cfu/g or ml)</td> <td></td> <td>Every Batch</td> <td><100</td> <td>100</td> <td>1000</td> </tr> <tr> <td>Salmonella (cfu/g or ml)</td> <td></td> <td>Every Batch</td> <td><0</td> <td>0</td> <td>25</td> </tr> </tbody> </table>							Organism	Description	Frequency	Target	Maximum	Sample (g or ml)	E. Coli (cfu/g or ml)		Every Batch	<100	100	1000	Salmonella (cfu/g or ml)		Every Batch	<0	0	25
Organism	Description	Frequency	Target	Maximum	Sample (g or ml)																			
E. Coli (cfu/g or ml)		Every Batch	<100	100	1000																			
Salmonella (cfu/g or ml)		Every Batch	<0	0	25																			
CONFIGURATION	Case Configuration		Inner Pack Configuration																					
PRODUCT WEIGHTS	Total Quantity of Inner Components in Outer Case		6 Units																					
	Is the Outer Case Splittable?		Yes																					
	Inner Component																							
	Variable Weight Consumer Item		No																					
	Inner Component Weight		500 g																					
	Net Drained Weight		0.5 kg																					
	e mark		Yes																					
	Outer Case																							
	Outer Case Gross Weight		3.3 kg																					
	Outer Case Net Weight		3 kg																					
PRODUCT DIMENSIONS	Inner Component																							
	Inner Component Depth		120 mm																					
	Inner Component Width		140 mm																					
	Inner Component Height		140 mm																					
	Outer Case																							
	Outer Case Depth		400 mm																					
	Outer Case Width		140 mm																					
	Outer Case Height		280 mm																					
PALLET INFORMATION	Quantity of Cases Per Pallet Layer		22 Cases		Pallet Height 1.8 MTR																			
	Quantity of Layers Per Pallet		6 Layers		Pallet Gross Weight 440 kg																			
	Quantity of Cases Per Pallet		132 Cases																					
PACKAGING	Inner Component Packaging																							
	<table border="1"> <thead> <tr> <th>Type</th> <th>Materials</th> <th>Weight</th> <th>Recycled Plastic %</th> <th>Recyclable</th> <th>Returnable</th> <th>Composite</th> </tr> </thead> <tbody> <tr> <td>Tub</td> <td>Plastic</td> <td>50 g</td> <td>- %</td> <td></td> <td></td> <td></td> </tr> </tbody> </table>							Type	Materials	Weight	Recycled Plastic %	Recyclable	Returnable	Composite	Tub	Plastic	50 g	- %						
	Type	Materials	Weight	Recycled Plastic %	Recyclable	Returnable	Composite																	
	Tub	Plastic	50 g	- %																				
	Outer Case Packaging																							
	<table border="1"> <thead> <tr> <th>Type</th> <th>Materials</th> <th>Weight</th> <th>Recycled Plastic %</th> <th>Recyclable</th> <th>Returnable</th> <th>Composite</th> </tr> </thead> <tbody> <tr> <td>Box</td> <td>Paper/Cardboard</td> <td>150 g</td> <td>- %</td> <td></td> <td></td> <td></td> </tr> </tbody> </table>							Type	Materials	Weight	Recycled Plastic %	Recyclable	Returnable	Composite	Box	Paper/Cardboard	150 g	- %						
	Type	Materials	Weight	Recycled Plastic %	Recyclable	Returnable	Composite																	
	Box	Paper/Cardboard	150 g	- %																				

Transport Packaging

Type	Materials	Weight	Recycled Plastic %	Recyclable	Returnable	Composite
Other	Plastic	200 g	- %			
Other	Paper/Cardboard	150 g	- %			

OTHER INFORMATION

Commodity Code 910999900

CONTACT INFORMATION

Address

Greenfields London Ltd
 25 Crawford Street
 London
 W1H 1PL
 United Kingdom

Technical Contact

Anna
 Greenfields Team
 anna@greenfieldsuk.co.uk

P: (Phone) 0208 997 8555

Commercial Contact

Karim Ali
 Director
 karim@greenfieldsuk.co.uk

P: (Phone) 0208 997 8555

The information on the [Erudus System](#) has been supplied by the manufacturers of the products and, whilst the owners of the Erudus System take steps to ensure the information is regularly updated, they give no warranty and no guarantee that the information is accurate. Product information and ingredients may change, please always read product labels carefully in addition to using the information provided by Erudus.

We do not accept liability for any inaccuracies or incorrect information contained on this site. Please visit <http://www.erudus.com/terms-and-conditions> for full terms and conditions.