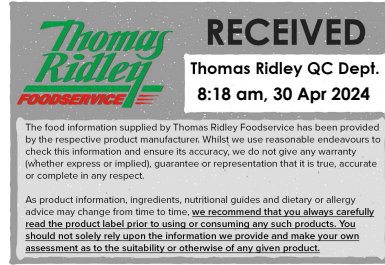


Changed Apr 29, 2024 10:25

Reviewed Apr 29, 2024 10:25

Erudus ID 6f1578e9ed3b41e18c97e49f5eb17c9f

Version 2.0



11656

Parsley 6x120g

Parsley 6x120g

PRODUCT DESCRIPTION

Dried rubbed leaves of Petroselinum crispum

Brand	Greenfields London Ltd
Manufacturer Product Code	2912
Product Type	Food
Product Category	Chillies, Herbs, & Spices
Storage Type	Ambient
Erudus ID	6f1578e9ed3b41e18c97e49f5eb17c9f
Specification Type	Generic
Inner Component GTIN	5027906040898
Outer Case GTIN	5027976042303



INGREDIENTS

Ingredient Declaration

Parsley (herb)

ALLERGENS

Product Contains:

Celery/Celeriac	No
Cereals Containing Gluten	No
Barley	No
Oats	No
Rye	No
Wheat (including Spelt and Khorasan)	No
Crustacea	No
Eggs	No
Fish	No
Lupin	No
Milk	No
Molluscs	No
Mustard	No
Nuts (Tree)	No
Almond nuts	No
Brazil nuts	No
Cashew nuts	No
Hazelnuts	No
Macadamia (Queensland) nuts	No
Pecan nuts	No
Pistachio nuts	No
Walnuts	No
Peanuts	No
Sesame Seeds	No
Soybeans	No
Sulphur Dioxide and Sulphites	No

Additional Allergen Information

Where products are indicated as not having an allergen present this refers to the product not being formulated or wholly derived from the particular ingredient. Allergen handling policies and procedures are in place through the supply chain to reduce the likelihood of cross contamination from allergens. Unless otherwise stated in the table above products are supplied, to the best of our knowledge, free from nuts and nut derivatives. Due diligence checks of the supply chain are in place, however due to the nature of the products supplied it is not possible for the company to guarantee that no cross contamination has taken place at some point in the supply chain prior to delivery to our premises.

SUPPLEMENTARY INGREDIENT INFORMATION

Palm Oil	No
Hydrogenated Vegetable Oil/Fat	No
GM Protein/DNA	No

ADDITIVES

Product Contains:

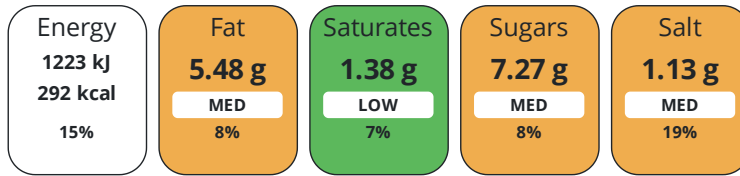
Artificial Antioxidants	No
Artificial Colours	No
Artificial Flavour Enhancers	No
Artificial Flavourings	No
Artificial Preservatives	No
Artificial Sweeteners	No

DIET SUITABILITY

Vegan Diet	Suitable for	Vegetarian Diet	Suitable for
Halal Diet	Suitable for	Kosher Diet	Suitable for

NUTRITIONAL INFORMATION

Each 100g/ml portion contains:



of your reference intake.

Typical values per 100g/ml : Energy 292kcal / 1223kj

Nutrient	per 100g	RI per 100g
Energy (kJ)	1223 kJ	15%
Energy (kcal)	292 kcal	15%
Fat	5.48 g	8%
of which Saturates	1.38 g	7%
Carbohydrate	50.64 g	19%
of which Sugars	7.27 g	8%
Protein	26.63 g	53%
Salt	1.13 g	19%
Sodium	452 mg	

SUPPLEMENTARY NUTRITIONAL INFORMATION

HFSS (HIGH IN FAT, SALT AND SUGAR)

HFSS Status No

HANDLING & STORAGE INFORMATION

Directions For Use

As required

Storage Instructions

Store in a dry, cool place

Shelf Life from Time of Production

500 Days

Exempt From Shelf Life Labelling

No

ACCREDITATIONS/ CERTIFICATIONS/ ASSURANCE SCHEMES

SALSA (Safe & Local Supplier Approval)

Other Accreditation

ORIGIN

Product Country of Origin/Place of United Kingdom

Provenance

PRODUCT CHARACTERISTICS

Standards Testing

Do you undertake trend analysis of microbiological results?

No

Is shelf life testing undertaken?

Yes

Microbiological Standards

Organism	Description	Frequency	Target	Maximum	Sample (g or ml)
E. Coli (cfu/g or ml)		Every Batch	<10	10	1000
Salmonella (cfu/g or ml)		Every Batch	<0	0	25
Yeast (cfu/g or ml)		Every Batch	<500	500	1000
Moulds (cfu/g or ml)		Every Batch	<500	500	1000
Enterobacteriaceae (cfu/g or ml)		Every Batch	<100	100	1000

Organism	Description	Frequency	Target	Maximum	Sample (g or ml)	
Total Viable Count (TVC) (cfu/g or ml)		Every Batch	<50000	50000	1000	
CONFIGURATION						
Case Configuration						
Total Quantity of Inner Components in Outer Case				6 Units		
Is the Outer Case Splittable?				Yes		
Inner Pack Configuration						
PRODUCT WEIGHTS						
Inner Component						
Variable Weight Consumer Item				No		
Inner Component Weight				120 g		
Net Drained Weight				0.12 kg		
Outer Case						
Outer Case Gross Weight				0.9 kg		
Outer Case Net Weight				0.72 kg		
PRODUCT DIMENSIONS						
Inner Component						
Inner Component Depth				120 mm		
Inner Component Width				140 mm		
Inner Component Height				140 mm		
Outer Case						
Outer Case Depth				400 mm		
Outer Case Width				140 mm		
Outer Case Height				280 mm		
PALLET INFORMATION						
Quantity of Cases Per Pallet Layer				22 Cases		
Quantity of Layers Per Pallet				6 Layers		
Quantity of Cases Per Pallet				132 Cases		
Pallet Height				1.8 MTR		
Pallet Gross Weight				120 kg		
PACKAGING						
Inner Component Packaging						
Type	Materials	Weight	Recycled Plastic %	Recyclable	Returnable	Composite
Tub	Plastic	50 g	- %			
Outer Case Packaging						
Type	Materials	Weight	Recycled Plastic %	Recyclable	Returnable	Composite
Case	Plastic	150 g	- %			
Case	Paper/Cardboard	20 g	- %			
Transport Packaging						
Type	Materials	Weight	Recycled Plastic %	Recyclable	Returnable	Composite
Other	Plastic	200 g	- %			
Other	Paper/Cardboard	150 g	- %			
OTHER INFORMATION						
Commodity Code				1211908690		

CONTACT INFORMATION

Address

Greenfields London Ltd
25 Crawford Street
London
W1H 1PL
United Kingdom

Technical Contact

Anna
Greenfields Team
anna@greenfieldsuk.co.uk

P: (Phone) 0208 997 8555

Commercial Contact

Karim Ali
Director
karim@greenfieldsuk.co.uk

P: (Phone) 0208 997 8555

The information on the [Erudus System](#) has been supplied by the manufacturers of the products and, whilst the owners of the Erudus System take steps to ensure the information is regularly updated, they give no warranty and no guarantee that the information is accurate. Product information and ingredients may change, please always read product labels carefully in addition to using the information provided by Erudus.

We do not accept liability for any inaccuracies or incorrect information contained on this site.
Please visit <http://www.erudus.com/terms-and-conditions> for full terms and conditions.