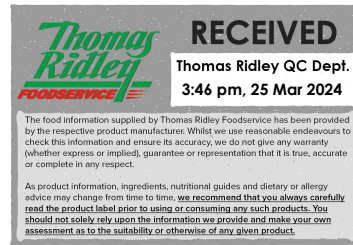


Changed Mar 25, 2024 12:54

Reviewed Mar 25, 2024 12:54

Erudus ID cd6eed101464db9989567a45da9cd64

Version 2.0



11675

# Bauletti con stracotto al Barolo DOCG

Bauletti With Barolo Docg Slow Braised Beef

## PRODUCT DESCRIPTION

Fresh frozen egg pasta with slow cooked beef and Barolo wine filling

Brand	Surgital S.p.A
Manufacturer Product Code	K141
Manufacturer Version	0
Number	
Effective Date	Mar 25, 2024
Product Type	Food
Product Category	Pasta, Rice and Noodles
Storage Type	Frozen
Erudus ID	cd6eed101464db9989567a45da9cd64
Specification Type	Generic

Outer Case GTIN 8006967020695



## INGREDIENTS

### Ingredient Declaration

Filling ingredients 62%

beef meat 60%, water, Barolo DOCG wine 6%, rice starch, extra virgin olive oil, onion, **CELERY**, carrots, salt, food gelatin of animal origin, garlic, bay leaf, rosemary, salt.

Pasta ingredients 38%

durum **WHEAT** semolina, barn **EGGS**, 29%.

### Ingredient Statements

ALLERGENS ARE INDICATED IN CAPITAL LETTERS CELERY WHEAT EGGS IT MAY CONTAIN: MUSTARD, SOY, SULPHITES.

## ALLERGENS

Product Contains:

<b>Celery/Celery</b>	Yes
<b>Cereals Containing Gluten</b>	Yes
<b>Barley</b>	No
<b>Oats</b>	No
<b>Rye</b>	No
<b>Wheat (including Spelt and Khorasan)</b>	Yes
<b>Crustacea</b>	No
<b>Eggs</b>	Yes
<b>Fish</b>	No
<b>Lupin</b>	No
<b>Milk</b>	No
<b>Molluscs</b>	No

<b>Mustard</b>	May Contain
<b>Nuts (Tree)</b>	No
<b>Almond nuts</b>	No
<b>Brazil nuts</b>	No
<b>Cashew nuts</b>	No
<b>Hazelnuts</b>	No
<b>Macadamia (Queensland) nuts</b>	No
<b>Pecan nuts</b>	No
<b>Pistachio nuts</b>	No
<b>Walnuts</b>	No
<b>Peanuts</b>	No
<b>Sesame Seeds</b>	No
<b>Soybeans</b>	May Contain
<b>Sulphur Dioxide and Sulphites</b>	May Contain

Risk Source:

SUPPLEMENTARY  
INGREDIENT  
INFORMATION

<b>Palm Oil</b>	No
<b>Hydrogenated Vegetable Oil/Fat</b>	No
<b>GM Protein/DNA</b>	No

ADDITIVES

Product Contains:

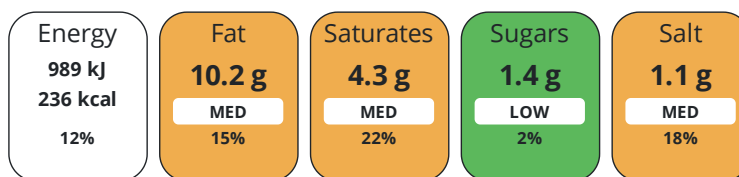
<b>Artificial Antioxidants</b>	No	<b>Artificial Flavourings</b>	No
<b>Artificial Colours</b>	No	<b>Artificial Preservatives</b>	No
<b>Artificial Flavour Enhancers</b>	No	<b>Artificial Sweeteners</b>	No

DIET  
SUITABILITY

<b>Vegan Diet</b>	No	<b>Vegetarian Diet</b>	No
<b>Halal Diet</b>	No	<b>Kosher Diet</b>	No

NUTRITIONAL  
INFORMATION

Each 100g/ml portion contains:



of your reference intake.

Typical values per 100g/ml : Energy 236kcal / 989kJ

Nutrient	per 100g	RI per 100g	per 110g serving	RI per 110g serving	per 132g of prepared product
<b>Energy (kJ)</b>	989 kJ	12%	1087.9 kJ	13%	-
<b>Energy (kcal)</b>	236 kcal	12%	259.6 kcal	13%	-
<b>Fat</b>	10.2 g	15%	11.2 g	16%	-
<b>of which Saturates</b>	4.3 g	22%	4.7 g	24%	-
<b>Carbohydrate</b>	18.5 g	7%	20.4 g	8%	-
<b>of which Sugars</b>	1.4 g	2%	1.5 g	2%	-
<b>Fibre</b>	1.4 g		1.5 g		-
<b>Protein</b>	17 g	34%	18.7 g	37%	-
<b>Salt</b>	1.1 g	18%	1.2 g	20%	-
<b>Serving Size</b>	110 g				

SUPPLEMENTARY  
NUTRITIONAL  
INFORMATION

HANDLING &  
STORAGE  
INFORMATION

**Directions For Use**

Boiling water: - Without defrosting add the pasta to a pasta cooker full of boiling salted water. - Once water returns to boil, cook pasta according to the recommended cooking time. Stir occasionally. - Drain the pasta; - Season to taste. For perfect pasta, always use one litre of boiling water for every 100g of pasta.

**Storage Instructions**

In the ice compartment: Ice compartment \* (-6°C): 3 days Ice compartment \*\* (-12°C): 1 week Ice compartment \*\*\* (-18) : 1 month  
See date printed on the package

**Storage Instructions After Opening**

Once defrosted the product must not be refrozen and must be consumed within 24 hours provided that it is kept in the refrigerator.

<b>Shelf Life from Time of Production</b>	540 Days	<b>Exempt From Shelf Life Labelling</b>	No
<b>Shelf Life Once Defrosted</b>	1 Days		

ACCREDITATIONS/ CERTIFICATIONS/ ASSURANCE SCHEMES	<b>BRCGS Certified</b>		<b>BRCGS Food Safety</b>	
	<b>IFS Food Standard</b>		<b>ISO 14001 (Environmental Management)</b>	
	<b>ISO 9001:2015 (Quality Management Systems)</b>			
ORIGIN	<b>Product Country of Origin/Place of Provenance</b>		Italy	
PRODUCT CHARACTERISTICS CONFIGURATION	Standards Testing			
	Case Configuration		Inner Pack Configuration	
	<b>Variable Inner Components in Outer Case</b>	No	<b>Is Inner Pack Splittable?</b>	No
	<b>Total Quantity of Inner Components in Outer Case</b>	8 Units		
	<b>Total Quantity of Inner Packs in Outer Case</b>	8 Units		
	<b>Is the Outer Case Splittable?</b>	No		
PRODUCT WEIGHTS	Inner Component		Inner Pack	
	<b>Variable Weight Consumer Item</b>	Yes	<b>Inner Pack Gross Weight</b>	290 g
			<b>Inner Pack Net Weight</b>	250 g
	Outer Case			
	<b>Outer Case Gross Weight</b>	2.28 kg		
	<b>Outer Case Net Weight</b>	2 kg		
PRODUCT DIMENSIONS	Inner Component		Inner Pack	
	<b>Inner Component Depth</b>	60 mm	<b>Inner Pack Depth</b>	286 mm
	<b>Inner Component Width</b>	45 mm	<b>Inner Pack Width</b>	258 mm
	<b>Inner Component Height</b>	16 mm	<b>Inner Pack Height</b>	18 mm
	Outer Case			
	<b>Outer Case Depth</b>	298 mm		
	<b>Outer Case Width</b>	265 mm		
	<b>Outer Case Height</b>	152 mm		
	<b>Quantity of Cases Per Pallet Layer</b>	12 Cases	<b>Pallet Height</b>	1.98 MTR
PALLET INFORMATION	<b>Quantity of Layers Per Pallet</b>	11 Layers		
	<b>Quantity of Cases Per Pallet</b>	132 Cases		
OTHER INFORMATION CONTACT INFORMATION	Address			
	Surgital S.p.A 16/1 Via Bastia 48017 Lavezzola (RA) Emilia Romagna 48017 Italy			
	P: (Phone) +447786515906			

The information on the [Erudus System](#) has been supplied by the manufacturers of the products and, whilst the owners of the Erudus System take steps to ensure the information is regularly updated, they give no warranty and no guarantee that the information is accurate. Product information and ingredients may change, please always read product labels carefully in addition to using the information provided by Erudus.

We do not accept liability for any inaccuracies or incorrect information contained on this site.  
Please visit <http://www.erudus.com/terms-and-conditions> for full terms and conditions.