

Supplier's Product Code :  
Product Added :  
Last Updated by Supplier :  
erudus id :

61017  
05 April 2023  
28 June 2023  
1699f4638715494b86a977d9fe469f55



The information on the Erudus System has been supplied by the manufacturers of the products and, whilst the owners of the Erudus System take steps to ensure the information is regularly updated, they give no warranty and no guarantee that the information is accurate. Product information and ingredients may change, please always read product labels carefully in addition to using the information provided by Erudus One.

We do not accept liability for any inaccuracies or incorrect information contained on this site. Please visit <http://www.erudus.com/terms-and-conditions> for full terms and conditions.

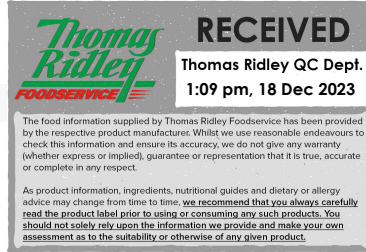
## Armando Fettuccine 24 x 500g

Short Product Name:  
Armando Fettuccine 24 x 500g

Product Description:  
Premium quality, 100% Italian pasta made from durum wheat semolina. This is flat fettuccine using Die number 14.

### General Information

|                        |              |
|------------------------|--------------|
| Food/Drink :           | Food         |
| Product Category :     | Ambient      |
| Generic Product Type : | Pasta & Rice |



Supplier's Product Code :  
61017  
Supplier: Daybreak Foods Limited  
Madison House, 31 High Street  
Sunninghill  
Ascot  
Berkshire  
SL5 9NP  
United Kingdom  
P: 01344 874445

### OUTER PRODUCT

#### Outer case Information

|   |                |                        |          |
|---|----------------|------------------------|----------|
| Outer Case GTIN :                             | 18005709400143 | Outer Case Length :    | 290 mm   |
| Packaging Type Description :                  | Case           | Outer Case Width :     | 190 mm   |
| Total Quantity of Inner Units in Outer Case : | 24 Units       | Outer Case Height :    | 280 mm   |
| Is Trade Item Splittable? :                   | Yes            | Product Gross Weight : | 12.37 kg |
|   |                | Product Net Weight :   | 12.00 kg |

#### Pallet Information

|                                      |          |                       |             |
|--------------------------------------|----------|-----------------------|-------------|
| Quantity of Cases Per Pallet Layer : | 20 Cases | Pallet Height :       | 1.27 MTR    |
| Quantity of Layers Per Pallet :      | 4 Layers | Pallet Gross Weight : | 1,014.52 kg |
| Quantity of Cases Per Pallet :       | 80 Cases |                       |             |

#### Logistical Information

|                                      |                |                          |                |
|--------------------------------------|----------------|--------------------------|----------------|
| Shelf Life from Time of Production : | 1,095 Days     | Minimum Order Quantity : | Not specified. |
| Guaranteed Shelf Life on Delivery :  | Not specified. | Delivery Lead Time :     | Not specified. |

#### Waste Packaging Weight - Outer Case

|                               |          |                         |                |
|-------------------------------|----------|-------------------------|----------------|
| Glass :                       | 0.00 g   | Aluminium :             | 0.00 g         |
| Plastic :                     | 0.00 g   | Steel :                 | 0.00 g         |
| Percentage Recycled Plastic : | 0.00 %   | Other :                 | 0.00 g         |
| Paper/Board :                 | 273.00 g | Wood :                  | Not specified. |
|                               |          | Fibre Based Composite : | Not specified. |

#### Waste Packaging Weight - Transport Packaging

|                               |          |                         |             |
|-------------------------------|----------|-------------------------|-------------|
| Plastic :                     | 300.00 g | Wood Total :            | 25,000.00 g |
| Paper/Board :                 | 0.00 g   | Is Pallet Returnable? : | Yes         |
| Percentage Recycled Plastic : | 30.00 %  |                         |             |

#### Other Information

Supplier Comments :  
Not specified.

## INNER PRODUCT

### Origin Information

Product Country of Origin/Place of Provenance : Italy

**Additional Origin Details :**  
Produced in Italy

### Inner Pack Information

Internal GTIN : 8005709400146

Packaging Type Description : Polypropylene Film

Variable Weight Consumer Item : No

Net Drained Weight : Not specified.

Inner Unit Length : 85 mm

Inner Unit Height : 290 mm

Inner Unit Width : 25 mm

Inner Product Weight : 500.00 g

Inner Product Weight Units : g

**Weight/Volume :**  
Not specified.

### Handling Information

**Directions For Use :**  
Cooking time 8-10 minutes.

**Storage Instructions :**  
Store in a cool dry place

## Dietary Information

### Ingredients :

durum WHEAT semolina.

### Product contains:

|   |             |
|---|-------------|
| GM Protein/DNA :                          | No          |
| Celery/Celeriac (and products thereof) :  | No          |
| Lupin (and products thereof) :            | No          |
| Eggs (and products thereof) :             | No          |
| Fish (and products thereof) :             | No          |
| Soybeans (and products thereof) :         | May Contain |
| Milk (and products thereof) :             | No          |
| Mustard (and products thereof) :          | May Contain |
| Peanuts (and products thereof) :          | No          |
| Sesame Seeds (and products thereof) :     | No          |
| Crustacea (and products thereof) :        | No          |
| Molluscs (and products thereof) :         | No          |
| Nuts (and products thereof) :             | No          |
| Almond nuts :                             | No          |
| Hazelnuts :                               | No          |
| Walnuts :                                 | No          |
| Cashew nuts :                             | No          |
| Pecan nuts :                              | No          |
| Brazil nuts :                             | No          |
| Pistachio nuts :                          | No          |
| Macadamia nuts :                          | No          |
| Queensland nuts :                         | No          |
| Cereals Containing Gluten :               | Yes         |
| Wheat (and products thereof) :            | Yes         |
| Rye (and products thereof) :              | No          |
| Barley (and products thereof) :           | No          |
| Oats (and products thereof) :             | No          |
| Spelt (and products thereof) :            | No          |
| Kamut (and products thereof) :            | No          |
| Gluten content <20ppm :                   | -           |
| Hydrogenated Vegetable Oil/Fat :          | No          |
| Palm Oil :                                | No          |
| Sulphur Dioxide and Sulphites :           | No          |
| Sulphur Dioxide/Sulphites Concentration : | -           |

### Product contains :

|                                |    |
|--------------------------------|----|
| Artificial Antioxidants :      | No |
| Artificial Colours :           | No |
| Artificial Flavourings :       | No |
| Artificial Flavour Enhancers : | No |
| Artificial Preservatives :     | No |
| Artificial Sweeteners :        | No |

### Product suitability:

|   |     |
|---|-----|
| Suitable for a Vegetarian Diet :                | Yes |
| Suitable for a Vegan Diet :                     | Yes |
| Suitable for Sufferers of Lactose Intolerance : | Yes |
| Suitable for Coeliacs :                         | No  |
| Approved for a Halal Diet :                     | Yes |
| Approved for a Kosher Diet :                    | Yes |
| HFSS (High in Fat, Salt and Sugar) :            | No  |

### Allergen Statement :

May contain SOY and MUSTARD.

## Nutritional Information

|  |                |
|--|----------------|
| Average Serving :                          | Not specified. |
| Count per 100g :                           | Not specified. |
| Count Per Pack :                           | Not specified. |
| Energy per 100 G/ML :                      | 1,501.00 kJ    |
| Energy per 100 G/ML :                      | 354.00 kcal    |
| Fat per 100 G/ML :                         | 1.3 g          |
| - of which Saturates per 100 G/ML :        | 0.3 g          |
| - of which Mono-unsaturates per 100 G/ML : | Not specified. |
| - of which Polyunsaturates per 100 G/ML :  | Not specified. |
| Trans Fats per 100 G\ML :                  | Not specified. |
| Carbohydrate Per 100 G/ML :                | 71.2 g         |
| - of which Sugars per 100 G/ML :           | 3.2 g          |
| - of which Polyols per 100 G/ML :          | Not specified. |
| - of which Starch per 100 G/ML :           | Not specified. |
| Fibre per 100 G/ML :                       | 2.7 g          |
| Protein per 100 G/ML :                     | 13 g           |
| Salt per 100 G/ML :                        | <0.01 g        |
| Sodium per 100 G\ML :                      | Not specified. |

|   |                |
|---|----------------|
| Vitamin A per 100g :                    | Not specified. |
| Vitamin C per 100g :                    | Not specified. |
| Folate/Folic Acid per 100g :            | Not specified. |
| Calcium per 100g :                      | Not specified. |
| Iron per 100g :                         | Not specified. |
| Zinc per 100g :                         | Not specified. |
| Cholesterol per 100 G/ML (UK/FR) :      | Not specified. |
| Non Milk Extrinsic Sugars per 100gm :   | Not specified. |
| Alcoholic Strength %Vol :               | Not specified. |
| Fat Percentage in Dry Matter per 100g : | Not specified. |

## Waste Packaging Weight - Inner Unit

|                               |        |
|-------------------------------|--------|
| Glass :                       | 0.00 g |
| Plastic :                     | 4.00 g |
| Percentage Recycled Plastic : | 0.00 % |
| Paper/Board :                 | 0.00 g |

|                         |                |
|-------------------------|----------------|
| Aluminium :             | 0.00 g         |
| Steel :                 | 0.00 g         |
| Other :                 | 0.00 g         |
| Wood :                  | Not specified. |
| Fibre Based Composite : | Not specified. |

## Accreditations / Certifications / Assurance Schemes

|   |     |
|---|-----|
| BRCGS Certified Production :  | Yes |
| Red Tractor :   | No  |
| Fairtrade :   | No  |
| Marine Stewardship Council Certified (MSC) :                        | No  |
| Organic :   | No  |
| SALSA (Safe & Local Supplier Approval) :                            | No  |
| British Lion Mark :   | No  |
| RSPCA Assured :   | No  |
| LEAF Marque (Linking Environment and Farming) :                     | No  |
| Rainforest Alliance :   | No  |
| Food for Life Supplier Scheme :                                     | No  |
| Quality Meat Scotland :   | No  |
| Farm Assured Welsh Livestock :                                      | No  |
| Northern Ireland Beef & Lamb Farm Quality Assurance Scheme :        | No  |
| Quality Standard Mark (Beef/Lamb) :                                 | No  |
| Roundtable of Sustainable Palm Oil (RSPO) :                         | No  |
| School Approved (The Requirement for School Food Regulation 2014) : | No  |
| IFS Food Standard :   | Yes |
| Best Aquaculture Practices (BAP) Certification :                    | No  |
| ISO 14001 (Environmental System) :                                  | Yes |
| FSSC 22000 :  | No  |

|  |                |
|--|----------------|
| <b>Other Accreditation :</b><br>SA8000 |                |
| Intra Stat/Taric Code :                | Not specified. |
| Commodity Code :                       | Not specified. |
| Identification/Health Marks :          | Not specified. |

## Standards Testing

Do you undertake trend analysis of microbiological results? : No

Is shelf life testing undertaken? : Yes

## Microbiological Standards

| Organism                                 | Frequency    | Target | Maximum | Sample (g or ml) | Note |
|--|--------------|--------|---------|------------------|------|
| Aerobic Colony Count (ACC) (cfu/g or ml) | Occasionally | <10000 | 10000   | -                |      |
| Bacillus Cereus (cfu/g or ml)            | Occasionally | <100   | 100     | -                |      |
| E. Coli (cfu/g or ml)                    | Occasionally | <10    | 10      | -                |      |
| Enterobacteriaceae (cfu/g or ml)         | Occasionally | <100   | 100     | -                |      |
| Moulds (cfu/g or ml)                     | Occasionally | <100   | 100     | -                |      |
| Salmonella                               | Occasionally | <0     | 0       | -                |      |
| Staphylococcus Aureus (cfu/g or ml)      | Occasionally | <100   | 100     | -                |      |
| Yeast (cfu/g or ml)                      | Occasionally | <100   | 100     | -                |      |

## Analytical Standards

| Test         | Frequency    | Target | Range        | Sample (g or ml) | Note |
|--------------|--------------|--------|--------------|------------------|------|
| Moisture (%) | Occasionally | <12.5  | 10.5 to 12.5 | -                |      |