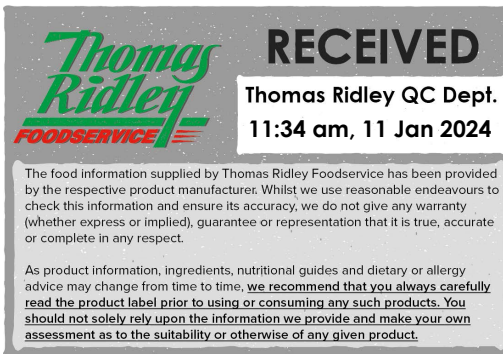


Changed Aug 02, 2023 15:01

Erudus ID 7512c6acefce4afb87f5cb77f2591a60

Version 1.0



# Sherry Vinegar 12x

SHERRY VINEGAR GRAN GUSTO 750ML

## PRODUCT DESCRIPTION

Sherry Vinegar Gran Gusto 750ml

<b>Brand</b>	Leathams Ltd
<b>Manufacturer Product Code</b>	VIN180
<b>Product Type</b>	Food
<b>Product Category</b>	Confectionery
<b>Storage Type</b>	Ambient
<b>Erudus ID</b>	7512c6acefce4afb87f5cb77f2591a60
<b>Specification Type</b>	Legacy
<b>Inner Component GTIN</b>	8411587486125



## INGREDIENTS

### Ingredient Declaration

Sherry Vinegar (SULPHITES), caramel colour(E-150d).

## ALLERGENS

Product Contains:

<b>Celery/Celериac</b>	No	<b>Mustard</b>	No
<b>Cereals Containing Gluten</b>	No	<b>Nuts (Tree)</b>	No
<b>Barley</b>	No	<b>Almond nuts</b>	No
<b>Oats</b>	No	<b>Brazil nuts</b>	No
<b>Rye</b>	No	<b>Cashew nuts</b>	No
<b>Wheat (including Spelt and Khorasan)</b>	No	<b>Hazelnuts</b>	No
<b>Gluten content &lt;20ppm</b>	Yes	<b>Macadamia (Queensland) nuts</b>	No
<b>Crustacea</b>	No	<b>Pecan nuts</b>	No
<b>Eggs</b>	No	<b>Pistachio nuts</b>	No
<b>Fish</b>	No	<b>Walnuts</b>	No
<b>Lupin</b>	No	<b>Peanuts</b>	No
<b>Milk</b>	No	<b>Sesame Seeds</b>	No
<b>Molluscs</b>	No	<b>Soybeans</b>	No
		<b>Sulphur Dioxide and Sulphites</b>	Yes

## SUPPLEMENTARY INGREDIENT INFORMATION

<b>Palm Oil</b>	No
<b>Hydrogenated Vegetable Oil/Fat</b>	No
<b>GM Protein/DNA</b>	No

## ADDITIVES

Product Contains:

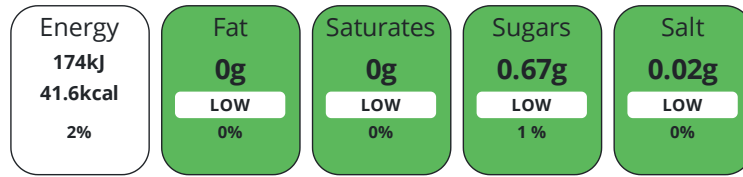
<b>Artificial Antioxidants</b>	No	<b>Artificial Flavourings</b>	No
<b>Artificial Colours</b>	Yes	<b>Artificial Preservatives</b>	No
<b>Artificial Flavour Enhancers</b>	No	<b>Artificial Sweeteners</b>	No

DIET  
SUITABILITY

<b>Suitable for Coeliacs</b>	Yes	<b>Halal Diet</b>	No
<b>Kosher Diet</b>	No	<b>Vegetarian Diet</b>	Suitable for
<b>Vegan Diet</b>	Suitable for		

NUTRITIONAL  
INFORMATION

Each 100g/ml portion contains:



of your reference intake.

Typical values per 100g/ml : Energy 41.6kcal / 174kJ

Nutrient	per 100g/ml	RI per 100g/ml
<b>Energy (kJ)</b>	174 kJ	2%
<b>Energy (kcal)</b>	41.6 kcal	2%
<b>Fat</b>	0 g	0%
of which Saturates	0 g	0%
<b>Carbohydrate</b>	2.26 g	1%
of which Sugars	0.67 g	1%
<b>Fibre</b>	0 g	
<b>Protein</b>	0.2 g	0%
<b>Salt</b>	0.02 g	0%

SUPPLEMENTARY  
NUTRITIONAL  
INFORMATION

HANDLING &  
STORAGE  
INFORMATION

**Directions For Use**

N/A

**Storage Instructions**

Store in a cool dry place

**Shelf Life from Time of Production**

730 Days

ACCREDITATIONS/  
CERTIFICATIONS/  
ASSURANCE  
SCHEMES



**Other Accreditation**

N/A

ORIGIN

**Product Country of Origin/Place of** Spain

**Provenance**

**Additional Origin Details**

N/A

PRODUCT  
CHARACTERISTICS

Standards Testing

**Do you undertake trend analysis of microbiological results?** No

**Is shelf life testing undertaken?** No

Microbiological Standards

Organism	Description	Frequency	Target	Maximum	Sample (g or ml)
Yeast (cfu/g or ml)		Occasionally	<0	10	-
Moulds (cfu/g or ml)		Occasionally	<0	10	-

Analytical Standards

Test	Description	Frequency	Target	Range	Sample (g or ml)
Acidity (%)		Every Batch	=70.5	70 to 72	-

CONFIGURATION

Case Configuration Inner Pack Configuration

**Total Quantity of Inner Components in** 12 Units

**Outer Case**

**Is the Outer Case Splittable?** Yes

PRODUCT WEIGHTS

Inner Component

**Variable Weight Consumer Item** No

**Weight/Volume**

750ml

Outer Case

**Outer Case Gross Weight** 15.27 kg

**Outer Case Net Weight** 9 kg

PRODUCT DIMENSIONS

Inner Component

**Inner Component Depth** 322 mm

**Inner Component Width** 245 mm

**Inner Component Height** 305 mm

Outer Case

**Outer Case Depth** 500 mm

**Outer Case Width** 400 mm

**Outer Case Height** 305 mm

PALLET INFORMATION

**Quantity of Cases Per Pallet Layer** 14 Cases **Pallet Height** 1.4 MTR

**Quantity of Layers Per Pallet** 4 Layers

**Quantity of Cases Per Pallet** 56 Cases

PACKAGING

Inner Component Packaging

Type	Materials	Weight	Recycled Plastic %	Recyclable	Returnable	Composite
Bottle	Paper/Cardboard	1.7 g	- %			
Bottle	Aluminium	4.1 g	- %			
Bottle	Glass	500 g	- %			

Outer Case Packaging

Type	Materials	Weight	Recycled Plastic %	Recyclable	Returnable	Composite
Case	Paper/Cardboard	225 g	- %			

OTHER INFORMATION

**Commodity Code** 2209001100

**Manufacturer Comments**

n/a

CONTACT  
INFORMATION

Address

Leathams Ltd  
Unit 10-12 The Circle  
Queen Elizabeth Street  
London  
SE1 2JE  
United Kingdom

P: (Phone) 020 7635 4008

Technical Contact

Technical Team  
technical.queries@leathams.co.uk

P: (Phone) +44 207 635 4008

The information on the [Erudus System](#) has been supplied by the manufacturers of the products and, whilst the owners of the Erudus System take steps to ensure the information is regularly updated, they give no warranty and no guarantee that the information is accurate. Product information and ingredients may change, please always read product labels carefully in addition to using the information provided by Erudus.

We do not accept liability for any inaccuracies or incorrect information contained on this site.

Please visit <http://www.erudus.com/terms-and-conditions> for full terms and conditions.