

NielsenIQ Brandbank

Galaxy Smooth Caramel & Milk Chocolate Snack Bar 48g



Thomas Ridley
FOODSERVICE

RECEIVED
Thomas Ridley QC Dept.
7:14 am, 17 Jan 2024

The food information supplied by Thomas Ridley Foodservice has been provided by the respective product manufacturer. Whilst we use reasonable endeavours to check this information and ensure its accuracy, we do not give any warranty (whether express or implied), guarantee or representation that it is true, accurate or complete in any respect.

As product information, ingredients, nutritional guides and dietary or allergy advice may change from time to time, **we recommend that you always carefully read the product label prior to using or consuming any such products. You should not solely rely upon the information we provide and make your own assessment as to the suitability or otherwise of any given product.**

EAN

5900951313196

Target market(s)

GB, IE

Components

Ingredients

Sugar
Glucose Syrup
Skimmed **Milk** Powder
Cocoa Butter
Palm Fat
Cocoa Mass

Milk Fat

Whey Permeate (**Milk**)
Emulsifier (**Soya** Lecithin)
Salt

Milk Chocolate contains Milk Solids 14% minimum

Milk Chocolate contains Vegetable Fats in addition to Cocoa Butter

Rainforest Alliance Certified Cocoa

Allergy Text

May contain: Peanuts, Almonds, Hazelnuts, Wheat.

Nutrition

	/ 100 g	/ 24 g (%*)
Energy	2026 kJ	486 kJ (6%)
	484 kcal	116 kcal (6%)
Fat	24 g	5.8 g (8%)
of which saturates	14 g	3.5 g (18%)
Carbohydrate	60 g	14 g (5%)
of which sugars	54 g	13 g (14%)
Protein	5.5 g	1.3 g (3%)
Salt	0.43 g	0.10 g (2%)

*Reference intake of an average adult (8400 kJ/2000 kcal)

Portions per pack: 2, Portion size: 24 g

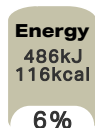
Calculated Nutrition

	per 100g	/ 24 g
Energy (kJ)	2026	486
Energy (kcal)	484	116
Fat (g)	24	5.8
of which saturates (g)	14	3.5
Carbohydrate (g)	60	14
of which sugars (g)	54	13
Protein (g)	5.5	1.3
Salt (g)	0.43	0.1

Front of Pack Nutrition

Per Portion

1x = 24 g



100g: 2026 kJ / 484 kcal

Reference intake of an average adult (8400 kJ/2000 kcal)

Product Description

Brand

Galaxy

Features

Suitable for vegetarians

Standardised Brand

Brand - Galaxy

Regulated Product Name

Milk chocolate (60%) with a caramel filling (40%).

Marketing

Company Name

Mars Wrigley Confectionery UK Ltd / Mars Foods Ireland Ltd

Company Address

GB: Freepost Mars Wrigley Confectionery UK Ltd.

IE: Mars Foods Ireland Ltd,
PO Box 3856,
Dublin 4.

Third Party Logos

- Green Dot
- Rainforest Alliance
- Tidyman

Other Information

Rainforest Alliance - People & Nature, Cocoa

Further Description

100% Responsibly Sourced Cocoa*
*Galaxy® Smooth Milk Products
*Learn more at galaxychocolate.co.uk

We source Rainforest Alliance Certified cocoa under the mass balance method.
Find out more at ra.org/mb

Health & Lifestyle

Lifestyle

- Suitable for Vegetarians

Allergy Advice

Almonds - May Contain
Hazelnuts - May Contain
Milk - Contains
Peanuts - May Contain
Soya - Contains
Wheat - May Contain

Storage & Usage

Storage Type

Type

Ambient

Brandbank Captured Pack Data

Pack Size

48g e

Numeric Size

Numeric Size - 48

Pack Type

Type - Wrap

Recycling Scheme

- OPRL

Recycling Other Text

Don't recycle at home - Recycle with Bags at Large Supermarket

Usage Count

Number of uses - Servings

2

Usage Other Text

Portions per pack: 2, Portion size: 24 g

Customer Services

Manufacturers Address

GB: Freepost Mars Wrigley Confectionery UK Ltd.

IE: Mars Foods Ireland Ltd,
PO Box 3856,
Dublin 4.

Return To

Get in touch:
0800 952 0077
www.mars.co.uk/contact
GB: Freepost Mars Wrigley Confectionery UK Ltd.

IE: Mars Foods Ireland Ltd,
PO Box 3856,
Dublin 4.
Contact us: <https://ire.mars.com/>
1890 812 315

Telephone Helpline

GB: 0800 952 0077
IE: 1890 812 315

Web Address

www.mars.co.uk/contact
<https://ire.mars.com/>

Extended Data

Description Breakdown

Functional Name - Snack Bar
Variant - Smooth Caramel & Milk Chocolate

