

# NielsenIQ Brandbank

## Twix Caramel & Milk Chocolate Fingers Biscuit Snack Bar 50g



**Thomas Ridley**  
FOODSERVICE

**RECEIVED**  
Thomas Ridley QC Dept.  
7:56 am, 17 Jan 2024

The food information supplied by Thomas Ridley Foodservice has been provided by the respective product manufacturer. Whilst we use reasonable endeavours to check this information and ensure its accuracy, we do not give any warranty (whether express or implied), guarantee or representation that it is true, accurate or complete in any respect.

As product information, ingredients, nutritional guides and dietary or allergy advice may change from time to time, **we recommend that you always carefully read the product label prior to using or consuming any such products. You should not solely rely upon the information we provide and make your own assessment as to the suitability or otherwise of any given product.**

EAN  
5900951313592

Target market(s)  
GB, IE

## Components

### Ingredients

Sugar

Glucose Syrup

**Wheat** Flour

Palm Fat

Skimmed **Milk** Powder

Cocoa Butter

Cocoa Mass

Whey Permeate (**Milk**)

**Milk** Fat

Fat-Reduced Cocoa Powder

Salt

Emulsifier (**Soya** Lecithin)

Raising Agent (E500)

Flavouring

### Allergy Text

May contain: **Nuts**, Other Cereals containing **Gluten**.

### Nutrition

	/ 100 g	/ 25 g (%*)
Energy	2065 kJ	516 kJ (6%)
	493 kcal	123 kcal (6%)
Fat	24 g	5.9 g (8%)
of which saturates	14 g	3.4 g (17%)
Carbohydrate	65 g	16 g (6%)
of which sugars	48 g	12 g (13%)
Protein	4.6 g	1.2 g (2%)
Salt	0.39 g	0.10 g (2%)

\*Reference intake of an average adult (8400 kJ/2000 kcal)

Portions per pack: 2, Portion size: 25 g

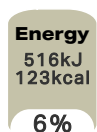
### Calculated Nutrition

	per 100g	/ 25 g
Energy (kJ)	2065	516
Energy (kcal)	493	123
Fat (g)	24	5.9
of which saturates (g)	14	3.4
Carbohydrate (g)	65	16
of which sugars (g)	48	12
Protein (g)	4.6	1.2
Salt (g)	0.39	0.1

### Front of Pack Nutrition

#### Per Portion

1 Twix = 25 g



100g: 2065 kJ / 493 kcal

Reference intake of an average adult (8400 kJ/2000 kcal)

## Product Description

### Brand

Twix

### Features

Suitable for vegetarians

### Standardised Brand

Brand - Twix

### Regulated Product Name

Milk chocolate (35%) covered caramel (32%) and biscuit (26%).

## Marketing

### Company Name

Mars Wrigley Confectionery UK Ltd / Mars Foods Ireland Ltd

### Company Address

GB: Freepost Mars Wrigley Confectionery UK Ltd.

IE: Mars Foods Ireland Ltd,  
PO Box 3856,  
Dublin 4.

### Third Party Logos

- Green Dot
- Tidyman

### Further Description

100% Responsibly Sourced Cocoa\*

\*100% verified as responsibly sourced cocoa. We purchase a volume of responsibly sourced cocoa equivalent to the volume used in this product. Learn more at [www.mars.com/COCOA-EUROPE](http://www.mars.com/COCOA-EUROPE)

## Health & Lifestyle

### Lifestyle

- Suitable for Vegetarians

### Allergy Advice

Cereals Containing Gluten - Contains  
Milk - Contains  
Nuts - May Contain  
Soya - Contains  
Wheat - Contains

## Storage & Usage

### Storage Type

Type
Ambient

### Storage

Keep cool and dry.

## Brandbank Captured Pack Data

### Pack Size

50g e

### Numeric Size

Numeric Size - 50

### Pack Type

Type - Wrap

### Recycling Scheme

- OPRL

### Recycling Other Text

Recycle with Bags at Large Supermarket - Don't recycle at home

### Usage Count

Number of uses - Servings

2

### Usage Other Text

Portions per pack: 2, Portion size: 25 g

## Customer Services

### Manufacturers Address

GB: Freepost Mars Wrigley Confectionery UK Ltd.

IE: Mars Foods Ireland Ltd,  
PO Box 3856,  
Dublin 4.

### Return To

Get in touch:  
0800 952 0077  
[www.mars.co.uk/contact](http://www.mars.co.uk/contact)  
GB: Freepost Mars Wrigley Confectionery UK Ltd.

IE: Mars Foods Ireland Ltd,  
PO Box 3856,  
Dublin 4.  
Contact us: <https://ire.mars.com/>  
1890 812 315

### Telephone Helpline

GB: 0800 952 0077  
IE: 1890 812 315

### Web Address

[www.mars.co.uk/contact](http://www.mars.co.uk/contact)  
<https://ire.mars.com/>

## Extended Data

### Description Breakdown

Functional Name - Biscuit Snack Bar  
Variant - Caramel & Milk Chocolate Fingers

