

Product: **Chocolate Iced Donuts 60g**

Product Code:

Brand: **KaterBake**

KB1679

Pack Details

Contents	No. Pcs in Case:	33	Avg. Pce Wt:	60 g	Case Net Wt:	1.98 kg		
	Count/Wt per Inner:	11/660g	Inners per Case:	3	Pack Size:	1 x 33		
Inners suitable for sale separately?: No		Barcode Inner: N/A		Barcode Outer: 05060062473612				
Palletisation	Cases per Layer:	20	No. of Layers:	7	Inners/Pallet:	420	Cases/Pallet:	140
Dimensions	Case mm:	298 x 198 x 216	Cubic ms:	0.013	Inner mm:	N/A	Commodity Code 1905 90 70 00	
Packaging Wts	Primary plastic:	27 g	Secondary plastic:	N/A g	Tertiary plastic:	N/A g		
	Primary board:	141 g	Secondary board:	N/A g	Metal:	N/A g		

Composition & Storage

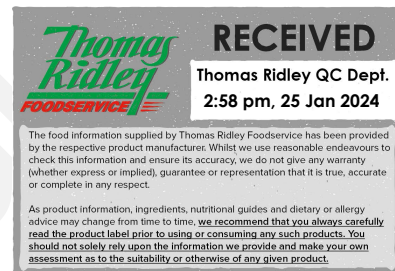
Description: A plain ring donut topped with chocolate flavour icing.
Palm from a sustainable source, RSPO Cert No: BMT-RSPO-001049.

Ingredients: See Page 2.

Allergen Statement: For allergens including cereals containing gluten, see ingredients in CAPITALS.

May Contain:

Meat Country of Origin: N/A **Store Frozen:** -18°C **Min Life on Del.** 137 **Days**



Preparation & Usage from Frozen

- M/wave:** See Page 3.
- Oven:** See Page 3.
- Grill:** See Page 3.
- Frying:** See Page 3.
- Other:** See Page 3.

Dietary & Health Information

				Average Nutritional		Per serving	
				Per 100 g		60 g	
		Contains		kJoules	1788	1073	
Suitable for Vegetarians	Yes	Milk / Derivatives	Yes	Kcals	428	257	
Suitable for Vegans	No	Egg / Derivatives	Yes	Fat (g)	24.7	14.8	
Suitable for Coeliacs	No	Soya	Yes	of which saturates (g)	12.3	7.4	
Halal Approved	No	SO ₂ /Sulphites >10ppm	No	of which monounsaturates (g)	8.46	5.1	
Kosher Approved	No	Sesame Seeds	No	of which polyunsaturates (g)	2.80	1.7	
Contains		Celery	No	Carbohydrate (g)	45.4	27.2	
Artificial colours	No	Mustard	No	of which sugars (g)	20.5	12.3	
Hydrogenated Fats	No	Peanuts / Derivatives	No	Fibre (g)	1.7	1.0	
GM Ingredients/Derivatives	No	Fish	No	Protein (g)	5.3	3.2	
MSG	No	Crustaceans / Shell Fish	No	Sodium (g)	0.138	0.083	
Gluten as added Ingredient	No	Other Nuts	No	expressed in salt (g)	0.35	0.21	
Wheat & Wheat Derivatives	Yes	Lupin / Derivatives	No	-----			
Other Gluten Cereals/Derivs	Yes	Molluscs	No	Zinc (mg)			
				Iron (mg)			
				Ash (g)			
				Vitamin A (µg)			
				Vitamin C (mg)			
				Folate (µg)			
				Calcium (mg)			

Approved Date: 24/01/2024

Approved by: Christopher Stobart

Product: Chocolate Iced Donuts 60g

Ingredients

Product Code:

KB1679

Fortified Wheat Flour (WHEAT Flour, Calcium Carbonate, Niacin, Iron, Thiamin), Water, Palm Oil, Chocolate Flavour Icing (13%) [Sugar, Palm Fat, Whey Powder (MILK), Maize Starch, Fat-Reduced Cocoa Powder, Emulsifiers (SOYA Lecithins, Polyglycerol Polyricinoleate), Flavouring], Sugar, Rapeseed Oil, Raising Agents (Diphosphates, Potassium Carbonates), Skimmed MILK Powder, Defatted SOYA Flour, Whey Powder (MILK), Dextrose, Free Range EGG Yolk Powder, Emulsifiers (SOYA Lecithins, Mono- and Diglycerides of Fatty Acids, Sodium Stearoyl-2-Lactylate), Maize Starch, OAT Fibre, MILK Protein.

Confidential

Product: Chocolate Iced Donuts 60g

Preparation & Usage from Frozen

Product Code:

KB1679

Microwave:

N/A

Oven:

N/A

Grill:

N/A

Frying:

N/A

Other Cooking or Serving Instructions:

DIRECTIONS FOR USE (from frozen):

Defrost at room temperature (approx. 20°C) for 45 mins. Defrosted shelf-life = 48 hrs (covered, at room temperature).

Ensure chocolate iced donuts are fully defrosted before serving.

Product: Chocolate Iced Donuts 60g

Product & Packaging

Product Code: KB1679

Lifestyle:



Outer Case Line Drawing:

	290	195	295	195	25
95					
210					
95		600-241795			