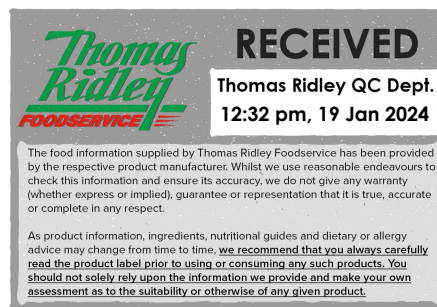


Royal Crown Chopped Tomatoes 6x800g

Royal Crown Chopped Tomatoes 6x800g

PRODUCT DESCRIPTION

chopped tomatoes in tomato juice



Brand	Kiril Mischeff Ltd
Manufacturer Product Code	40036100
Product Type	Food
Product Category	Vegetable - Canned
Storage Type	Ambient
Erudus ID	e8c4377d6d0f40a788590bc55d09911a
Specification Type	Legacy
Inner Component GTIN	5010227233346
Outer Case GTIN	05010227233124



INGREDIENTS

Ingredient Declaration

tomatoes, tomato juice, acidity regulator (citric acid)

ALLERGENS

Product Contains:

Celery/Celeriac	No	Mustard	No
Cereals Containing Gluten	No	Nuts (Tree)	No
Barley	No	Almond nuts	No
Oats	No	Brazil nuts	No
Rye	No	Cashew nuts	No
Wheat (including Spelt and Khorasan)	No	Hazelnuts	No
Gluten content <20ppm	Yes	Macadamia (Queensland) nuts	No
Crustacea	No	Pecan nuts	No
Eggs	No	Pistachio nuts	No
Fish	No	Walnuts	No
Lupin	No	Peanuts	No
Milk	No	Sesame Seeds	No
Molluscs	No	Soybeans	No
		Sulphur Dioxide and Sulphites	No

Additional Allergen Information

Please note whilst the product contains no gluten containing ingredients this product is not sold as 'gluten free' as its positively released Please note whilst the product contains no ingredients not vegan suitable / lactose intolerance this product isn't positively released as 'vegan' / 'lactose free' Product is suitable for halal diet and kosher diet but may not be formally certified.

SUPPLEMENTARY INGREDIENT INFORMATION

Palm Oil	No
Hydrogenated Vegetable Oil/Fat	No
GM Protein/DNA	No

ADDITIVES

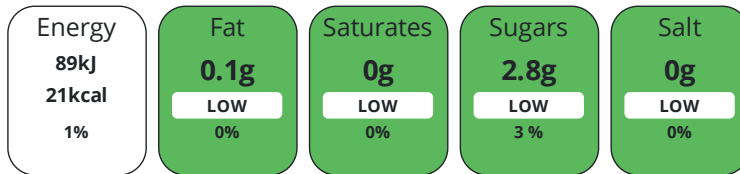
Product Contains:

Artificial Antioxidants	No	Artificial Flavourings	No
Artificial Colours	No	Artificial Preservatives	No
Artificial Flavour Enhancers	No	Artificial Sweeteners	No
Suitable for Coeliacs	Yes	Halal Diet	No
Kosher Diet	No	Vegetarian Diet	Suitable for
Vegan Diet	Suitable for		

DIET SUITABILITY

NUTRITIONAL INFORMATION

Each 100g/ml portion contains:



of your reference intake.

Typical values per 100g/ml : Energy 21kcal / 89kj

Nutrient	per 100g/ml	RI per 100g/ml
Energy (kj)	89 kj	1%
Energy (kcal)	21 kcal	1%
Fat	0.1 g	0%
of which Saturates	0 g	0%
Carbohydrate	3.7 g	1%
of which Sugars	2.8 g	3%
Protein	1 g	2%
Salt	0 g	0%

SUPPLEMENTARY NUTRITIONAL INFORMATION

HANDLING & STORAGE INFORMATION

Directions For Use

empty can and heat if required

Storage Instructions

store in dry cool place

Shelf Life from Time of Production 1065 Days

ACCREDITATIONS/ CERTIFICATIONS/ ASSURANCE SCHEMES



Other Accreditation

n/a

ORIGIN

Product Country of Origin/Place of Italy

Provenance

Additional Origin Details

other

PRODUCT CHARACTERISTICS

Standards Testing

Do you undertake trend analysis of microbiological results?	No	Is shelf life testing undertaken?	No
--	----	--	----

Analytical Standards

Test	Description	Frequency	Target	Range	Sample (g or ml)
Brix °Bx		Every Batch	=6	5 to 7	800
pH		Every Batch	<4.45	4 to 4.45	800

CONFIGURATION

Case Configuration

Inner Pack Configuration

Total Quantity of Inner Components in Outer Case	6 Units
Is the Outer Case Splittable?	No

PRODUCT WEIGHTS

Inner Component	
Variable Weight Consumer Item	No
Net Drained Weight	0.48 kg
Weight/Volume	
800g	
Outer Case	
Outer Case Gross Weight	6 kg
Outer Case Net Weight	4.8 kg

PRODUCT DIMENSIONS

Inner Component	
Inner Component Depth	100 mm
Inner Component Width	100 mm
Inner Component Height	120 mm
Outer Case	
Outer Case Depth	310 mm
Outer Case Width	205 mm
Outer Case Height	120 mm

PALLET INFORMATION

Quantity of Cases Per Pallet Layer	32 Cases	Pallet Height	1.3 MTR
Quantity of Layers Per Pallet	5 Layers	Pallet Gross Weight	988 kg
Quantity of Cases Per Pallet	160 Cases		

PACKAGING

Inner Component Packaging

Type	Materials	Weight	Recycled Plastic %	Recyclable	Returnable	Composite
Can	Steel	242 g	- %			

Outer Case Packaging

Type	Materials	Weight	Recycled Plastic %	Recyclable	Returnable	Composite
Can	Plastic	15 g	- %			
Can	Paper/Cardboard	55 g	- %			

Transport Packaging

Type	Materials	Weight	Recycled Plastic %	Recyclable	Returnable	Composite
Other	Plastic	200 g	- %			
Other	Wood	28000 g	- %			

OTHER
INFORMATION

Commodity Code

20021090

Manufacturer Comments

Orders times and minimum orders may change depending on commercial agreements

CONTACT
INFORMATION

Address

Kiril Mischeff Ltd
Enterprise House
Carlton Road
Worksop
Notts
S81 7QF
England

P: (Phone) 01909 534 000

The information on the [Erudus System](#) has been supplied by the manufacturers of the products and, whilst the owners of the Erudus System take steps to ensure the information is regularly updated, they give no warranty and no guarantee that the information is accurate. Product information and ingredients may change, please always read product labels carefully in addition to using the information provided by Erudus.

We do not accept liability for any inaccuracies or incorrect information contained on this site.
Please visit <http://www.erudus.com/terms-and-conditions> for full terms and conditions.