

# Royal Crown Plum Tomatoes 6 X 800g

Royal Crown Plum tomatoes 6 x 800g

## PRODUCT DESCRIPTION

Plum tomatoes in tomato juice

<b>Brand</b>	Kiril Mischeff Ltd
<b>Manufacturer Product Code</b>	40026900
<b>Product Type</b>	Food
<b>Product Category</b>	Vegetable - Canned
<b>Storage Type</b>	Ambient
<b>Erudus ID</b>	b71ecfa239c344dd9831cd2c2b606a74
<b>Specification Type</b>	Legacy
<b>Inner Component GTIN</b>	5010227233568
<b>Outer Case GTIN</b>	05010227233452



## INGREDIENTS

### Ingredient Declaration

tomatoes, tomato juice, acidity regulator (citric acid)

## ALLERGENS

Product Contains:

<b>Celery/Celeriac</b>	No	<b>Mustard</b>	No
<b>Cereals Containing Gluten</b>	No	<b>Nuts (Tree)</b>	No
<b>Barley</b>	No	<b>Almond nuts</b>	No
<b>Oats</b>	No	<b>Brazil nuts</b>	No
<b>Rye</b>	No	<b>Cashew nuts</b>	No
<b>Wheat (including Spelt and Khorasan)</b>	No	<b>Hazelnuts</b>	No
<b>Gluten content &lt;20ppm</b>	Yes	<b>Macadamia (Queensland) nuts</b>	No
<b>Crustacea</b>	No	<b>Pecan nuts</b>	No
<b>Eggs</b>	No	<b>Pistachio nuts</b>	No
<b>Fish</b>	No	<b>Walnuts</b>	No
<b>Lupin</b>	No	<b>Peanuts</b>	No
<b>Milk</b>	No	<b>Sesame Seeds</b>	No
<b>Molluscs</b>	No	<b>Soybeans</b>	No
		<b>Sulphur Dioxide and Sulphites</b>	No

### Additional Allergen Information

Please note whilst the product contains no gluten containing ingredients this product is not sold as 'gluten free' as its positively released Please note whilst the product contains no ingredients not vegan suitable / lactose intolerance this product isn't positively released as 'vegan' / 'lactose free' Product is suitable for halal diet and kosher diet but may not be formally certified.

## SUPPLEMENTARY INGREDIENT INFORMATION

<b>Palm Oil</b>	No
<b>Hydrogenated Vegetable Oil/Fat</b>	No
<b>GM Protein/DNA</b>	No

ADDITIVES

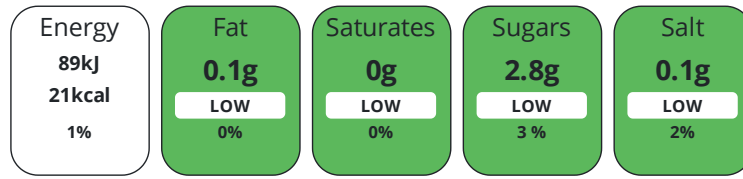
Product Contains:

<b>Artificial Antioxidants</b>	No	<b>Artificial Flavourings</b>	No
<b>Artificial Colours</b>	No	<b>Artificial Preservatives</b>	No
<b>Artificial Flavour Enhancers</b>	No	<b>Artificial Sweeteners</b>	No
<b>Suitable for Coeliacs</b>	Yes	<b>Halal Diet</b>	No
<b>Kosher Diet</b>	No	<b>Vegetarian Diet</b>	Suitable for
<b>Vegan Diet</b>	Suitable for		

DIET SUITABILITY

NUTRITIONAL INFORMATION

Each 100g/ml portion contains:



of your reference intake.

Typical values per 100g/ml : Energy 21kcal / 89kj

Nutrient	per 100g/ml	RI per 100g/ml	per 80g/ml serving	RI per 80g/ml serving
<b>Energy (kj)</b>	89 kj	1%	71.2 kj	1%
<b>Energy (kcal)</b>	21 kcal	1%	16.8 kcal	1%
<b>Fat</b>	0.1 g	0%	0.1 g	0%
of which Saturates	0 g	0%	-	
<b>Carbohydrate</b>	3.7 g	1%	3 g	1%
of which Sugars	2.8 g	3%	2.2 g	2%
<b>Protein</b>	1 g	2%	0.8 g	2%
<b>Salt</b>	0.1 g	2%	0.1 g	2%
<b>Sodium</b>	50 mg		40 mg	
<b>Serving Size</b>	80 g			

SUPPLEMENTARY NUTRITIONAL INFORMATION

HANDLING & STORAGE INFORMATION

**Directions For Use**

heat if required

**Storage Instructions**

ambient

**Shelf Life from Time of Production**

1065 Days

ACCREDITATIONS/ CERTIFICATIONS/ ASSURANCE SCHEMES



**Other Accreditation**

none

ORIGIN	<b>Product Country of Origin/Place of Provenance</b> Italy						
	<b>Additional Origin Details</b> N/A						
PRODUCT CHARACTERISTICS	Standards Testing						
	<b>Do you undertake trend analysis of microbiological results?</b>	No					
	<b>Is shelf life testing undertaken?</b>	No					
CONFIGURATION	Analytical Standards						
	<b>Test</b>	<b>Description</b>					
	Brix °Bx	Every Batch					
	pH	Every Batch					
	<b>Frequency</b>	<b>Target</b>					
	Every Batch	=6					
PRODUCT WEIGHTS	<b>Range</b>	<b>Sample (g or ml)</b>					
	5 to 7	800					
	4 to 4.45	800					
	Case Configuration						
	Inner Pack Configuration						
	<b>Total Quantity of Inner Components in Outer Case</b>	6 Units					
PRODUCT DIMENSIONS	<b>Is the Outer Case Splittable?</b>	No					
	Inner Component						
	<b>Variable Weight Consumer Item</b>	No					
	<b>Net Drained Weight</b>	0.48 kg					
	<b>Weight/Volume</b>						
	800g						
PALLET INFORMATION	Outer Case						
	<b>Outer Case Gross Weight</b>	6 kg					
	<b>Outer Case Net Weight</b>	4.8 kg					
	Inner Component						
	<b>Inner Component Depth</b>	100 mm					
	<b>Inner Component Width</b>	100 mm					
PACKAGING	<b>Inner Component Height</b>	120 mm					
	Outer Case						
	<b>Outer Case Depth</b>	310 mm					
	<b>Outer Case Width</b>	205 mm					
	<b>Outer Case Height</b>	120 mm					
	<b>Quantity of Cases Per Pallet Layer</b>	32 Cases					
<b>Quantity of Layers Per Pallet</b>	5 Layers						
PACKAGING	<b>Quantity of Cases Per Pallet</b>	160 Cases					
	<b>Pallet Height</b>	1.3 MTR					
PACKAGING	<b>Quantity of Cases Per Pallet Layer</b>	32 Cases					
	<b>Quantity of Layers Per Pallet</b>	5 Layers					
PACKAGING	<b>Quantity of Cases Per Pallet</b>	160 Cases					
	<b>Pallet Gross Weight</b>	988 kg					
PACKAGING	Inner Component Packaging						
	<b>Type</b>	<b>Materials</b>	<b>Weight</b>	<b>Recycled Plastic %</b>	<b>Recyclable</b>	<b>Returnable</b>	<b>Composite</b>
PACKAGING	Can	Steel	84 g	- %			
	Outer Case Packaging						
PACKAGING	<b>Type</b>	<b>Materials</b>	<b>Weight</b>	<b>Recycled Plastic %</b>	<b>Recyclable</b>	<b>Returnable</b>	<b>Composite</b>
	Case	Plastic	15 g	- %			
PACKAGING	Case	Paper/Cardboard	55 g	- %			

Transport Packaging

Type	Materials	Weight	Recycled Plastic %	Recyclable	Returnable	Composite
Other	Plastic	200 g	- %		Yes	
Other	Wood	28000 g	- %		Yes	

OTHER INFORMATION

**Commodity Code** 20021010

**Manufacturer Comments**

Orders times and minimum orders may change depending on commercial agreements

CONTACT INFORMATION

Address

Kiril Mischeff Ltd  
Enterprise House  
Carlton Road  
Worksop  
Notts  
S81 7QF  
England

P: (Phone) 01909 534 000

The information on the [Erudus System](#) has been supplied by the manufacturers of the products and, whilst the owners of the Erudus System take steps to ensure the information is regularly updated, they give no warranty and no guarantee that the information is accurate. Product information and ingredients may change, please always read product labels carefully in addition to using the information provided by Erudus.

We do not accept liability for any inaccuracies or incorrect information contained on this site.  
Please visit <http://www.erudus.com/terms-and-conditions> for full terms and conditions.