

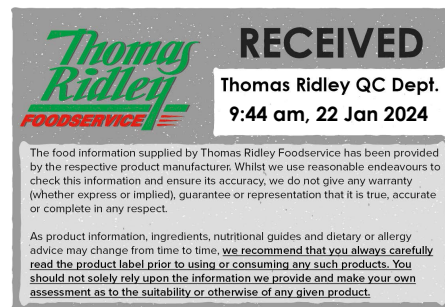
# Royal Crown 800g Tomato Paste

Royal Crown 800g tomato paste

## PRODUCT DESCRIPTION

tomato paste

<b>Brand</b>	Kiril Mischeff Ltd
<b>Manufacturer Product Code</b>	40036500
<b>Product Type</b>	Food
<b>Product Category</b>	Vegetable - Canned
<b>Storage Type</b>	Ambient
<b>Erudus ID</b>	2624d013cd0a4d538ae29aec16e97934
<b>Specification Type</b>	Legacy
<b>Inner Component GTIN</b>	5010227233896
<b>Outer Case GTIN</b>	05010227246568



## INGREDIENTS

### Ingredient Declaration

tomato paste

## ALLERGENS

Product Contains:

<b>Celery/Celeriac</b>	No	<b>Mustard</b>	No
<b>Cereals Containing Gluten</b>	No	<b>Nuts (Tree)</b>	No
<b>Barley</b>	No	<b>Almond nuts</b>	No
<b>Oats</b>	No	<b>Brazil nuts</b>	No
<b>Rye</b>	No	<b>Cashew nuts</b>	No
<b>Wheat (including Spelt and Khorasan)</b>	No	<b>Hazelnuts</b>	No
<b>Gluten content &lt;20ppm</b>	Yes	<b>Macadamia (Queensland) nuts</b>	No
<b>Crustacea</b>	No	<b>Pecan nuts</b>	No
<b>Eggs</b>	No	<b>Pistachio nuts</b>	No
<b>Fish</b>	No	<b>Walnuts</b>	No
<b>Lupin</b>	No	<b>Peanuts</b>	No
<b>Milk</b>	No	<b>Sesame Seeds</b>	No
<b>Molluscs</b>	No	<b>Soybeans</b>	No
		<b>Sulphur Dioxide and Sulphites</b>	No

## SUPPLEMENTARY INGREDIENT INFORMATION

<b>Palm Oil</b>	No
<b>Hydrogenated Vegetable Oil/Fat</b>	No
<b>GM Protein/DNA</b>	No

## ADDITIVES

Product Contains:

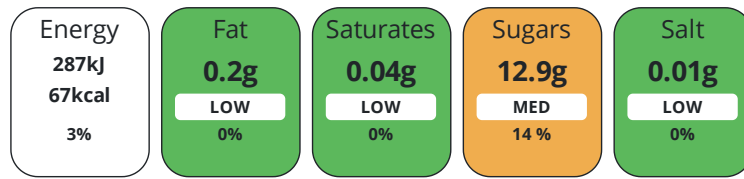
<b>Artificial Antioxidants</b>	No	<b>Artificial Flavourings</b>	No
<b>Artificial Colours</b>	No	<b>Artificial Preservatives</b>	No
<b>Artificial Flavour Enhancers</b>	No	<b>Artificial Sweeteners</b>	No

DIET  
SUITABILITY

Suitable for Coeliacs	No	Halal Diet	No
Kosher Diet	No	Vegetarian Diet	Suitable for
Vegan Diet	Suitable for		

NUTRITIONAL  
INFORMATION

Each 100g/ml portion contains:



of your reference intake.

Typical values per 100g/ml : Energy 67kcal / 287kj

Nutrient	per 100g/ml	RI per 100g/ml	per 80g/ml serving	RI per 80g/ml serving
Energy (kJ)	287 kJ	3%	229.6 kJ	3%
Energy (kcal)	67 kcal	3%	53.6 kcal	3%
Fat	0.2 g	0%	0.2 g	0%
of which Saturates	0.04 g	0%	-	
Carbohydrate	12.9 g	5%	10.3 g	4%
of which Sugars	12.9 g	14%	10.3 g	11%
Fibre	4.7 g		3.8 g	
Protein	4.4 g	9%	3.5 g	7%
Salt	< 0.01 g	0%	-	
Sodium	< 0.01 mg		-	
Serving Size	80 g			

SUPPLEMENTARY  
NUTRITIONAL  
INFORMATION

HANDLING &  
STORAGE  
INFORMATION

Directions For Use

Ready to eat

Storage Instructions

ambient

Shelf Life from Time of Production

1065 Days

ACCREDITATIONS/  
CERTIFICATIONS/  
ASSURANCE  
SCHEMES



Other Accreditation

none

ORIGIN

Product Country of Origin/Place of Origin Italy

Provenance

Additional Origin Details

N/A

PRODUCT  
CHARACTERISTICS

Standards Testing

CONFIGURATION	Case Configuration		Inner Pack Configuration				
	<b>Total Quantity of Inner Components in Outer Case</b>	12 Units					
	<b>Is the Outer Case Splittable?</b>	No					
PRODUCT WEIGHTS	Inner Component						
	<b>Variable Weight Consumer Item</b>	No					
	<b>Net Drained Weight</b>	0.8 kg					
	<b>Weight/Volume</b>						
	800g						
PRODUCT DIMENSIONS	Outer Case						
	<b>Outer Case Gross Weight</b>	10.68 kg					
	<b>Outer Case Net Weight</b>	0.8 kg					
	Inner Component						
	<b>Inner Component Depth</b>	110 mm					
PALLET INFORMATION	<b>Inner Component Width</b>	110 mm					
	<b>Inner Component Height</b>	115 mm					
	Outer Case						
	<b>Outer Case Depth</b>	310 mm					
	<b>Outer Case Width</b>	410 mm					
PACKAGING	<b>Outer Case Height</b>	120 mm					
	<b>Quantity of Cases Per Pallet Layer</b>	8 Cases	<b>Pallet Height</b>	0 MTR			
	<b>Quantity of Layers Per Pallet</b>	10 Layers	<b>Pallet Gross Weight</b>	884.84 kg			
OTHER INFORMATION	<b>Quantity of Cases Per Pallet</b>	80 Cases					
	Inner Component Packaging						
	<b>Type</b>	<b>Materials</b>	<b>Weight</b>	<b>Recycled Plastic %</b>	<b>Recyclable</b>	<b>Returnable</b>	<b>Composite</b>
	Can	Steel	84 g	- %			
	Outer Case Packaging						
	<b>Type</b>	<b>Materials</b>	<b>Weight</b>	<b>Recycled Plastic %</b>	<b>Recyclable</b>	<b>Returnable</b>	<b>Composite</b>
	Paper/Polyethylene	Plastic	70 g	- %			
	Paper/Polyethylene	Paper/Cardboard	52 g	- %			
	Transport Packaging						
	<b>Type</b>	<b>Materials</b>	<b>Weight</b>	<b>Recycled Plastic %</b>	<b>Recyclable</b>	<b>Returnable</b>	<b>Composite</b>
Other	Wood	28000 g	- %		Yes		
CONTACT INFORMATION	<b>Manufacturer Comments</b>						
	none						
CONTACT INFORMATION	Address						
	Kiril Mischeff Ltd						
	Enterprise House						
	Carlton Road						
	Worksop						
	Notts						
	S81 7QF						
England							
P. (Phone) 01909 534 000							

The information on the [Erudus System](#) has been supplied by the manufacturers of the products and, whilst the owners of the Erudus System take steps to ensure the information is regularly updated, they give no warranty and no guarantee that the information is accurate. Product information and ingredients may change, please always read product labels carefully in addition to using the information provided by Erudus.

We do not accept liability for any inaccuracies or incorrect information contained on this site.  
Please visit <http://www.erudus.com/terms-and-conditions> for full terms and conditions.