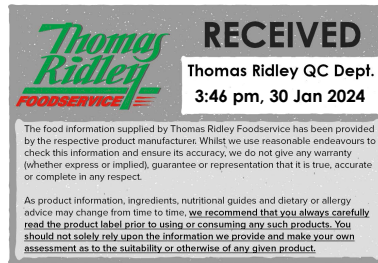


Changed Jan 30, 2024 14:46

Reviewed Jan 30, 2024 14:46

Erudus ID b9c924dbe4384bfba6ded3e3b0542983

Version 3.0



Caesar Dressing 2 x 2.25L

Caesar Dressing

PRODUCT DESCRIPTION

Flavour: Creamy cheesy with a fishy back note Colour: Cream Texture: Smooth and of pouring consistency Odour: Parmesan Cheese

Brand	Rich Sauces
Manufacturer Product Code	RSCAEDRS2.25X2
Product Type	Food
Product Category	Condiments
Storage Type	Ambient
Erudus ID	b9c924dbe4384bfba6ded3e3b0542983
Specification Type	Generic
Inner Pack GTIN	5060051295386
Outer Case GTIN	15060051295383



INGREDIENTS

Ingredient Declaration

Rapeseed Oil, Water, Pasteurised Liquid EGG (9%), Sherry Vinegar, Spirit Vinegar, Vegetable Stock (Salt, Maltodextrin, Yeast Extract, Sugar, Vegetables (Onion, Parsnip), Carrot Extract, Rapeseed Oil, Tomato, Lovage); Anchovy Essence (Anchovies (FISH), Salt, Emulsifier: Tragacanth Gum, Acidity Regulator: Acetic Acid); Parmesan Flavouring (1%)(MILK, WHEAT), Sugar, Garlic Puree (1%) (Garlic Puree, Acidity Regulator : Citric Acid); Salt, Worcester Sauce (Malt Vinegar (BARLEY), Water, Spirit Vinegar, Tamarind Extract, Sugar, Colour: Caramel, Onion Powder, Garlic Powder, White Pepper, Cloves, Paprika); Stabiliser: Xanthan Gum, MUSTARD Flour, Preservative: Potassium Sorbate, Black Pepper.

ALLERGENS

Product Contains:

Celery/Celeriac	No	Mustard	Yes
Cereals Containing Gluten	Yes	Nuts (Tree)	No
Barley	Yes	Almond nuts	No
Oats	No	Brazil nuts	No
Rye	No	Cashew nuts	No
Wheat (including Spelt and Khorasan)	Yes	Hazelnuts	No
Crustacea	No	Macadamia (Queensland) nuts	No
Eggs	Yes	Pecan nuts	No
Fish	Yes	Pistachio nuts	No
Lupin	No	Walnuts	No
Milk	Yes	Peanuts	No
Molluscs	No	Sesame Seeds	No
		Soybeans	No
		Sulphur Dioxide and Sulphites	No

SUPPLEMENTARY INGREDIENT INFORMATION

Palm Oil	No
Hydrogenated Vegetable Oil/Fat	No
GM Protein/DNA	No

ADDITIVES

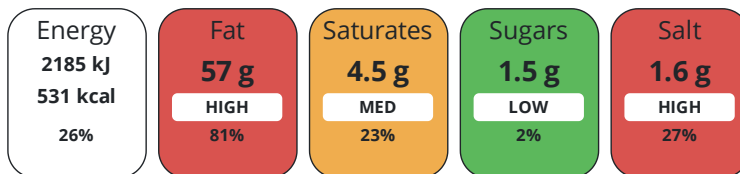
Product Contains:

Artificial Antioxidants	No	Artificial Flavourings	No
Artificial Colours	No	Artificial Preservatives	Yes
Artificial Flavour Enhancers	No	Artificial Sweeteners	No
Vegan Diet	No	Vegetarian Diet	No
Halal Diet	No	Kosher Diet	No

DIET SUITABILITY

NUTRITIONAL INFORMATION

Each 100g/ml portion contains:



of your reference intake.

Typical values per 100g/ml : Energy 531kcal / 2185kj

Nutrient	per 100g	RI per 100g
Energy (kJ)	2185 kJ	26%
Energy (kcal)	531 kcal	27%
Fat	57 g	81%
of which Saturates	4.5 g	23%
Carbohydrate	2.8 g	1%
of which Sugars	1.5 g	2%
Fibre	0.2 g	
Protein	1.7 g	3%
Salt	1.6 g	27%

Source of Nutritional Information Calculation based on known values of ingredients

VITAMINS AND MINERALS

Nutrient	per 100g	RI per 100g
Folate/Folic Acid	0 µg	0%

SUPPLEMENTARY NUTRITIONAL INFORMATION

Cholesterol per 100 g/ml (UK/FR) 0 g

HANDLING & STORAGE INFORMATION

Directions For Use

For best results: store below 5°C

Storage Instructions

Ambient product, refrigerate once opened, use within 6 weeks and within best before date.

Storage Instructions After Opening

Ambient product, refrigerate once opened, use within 6 weeks and within best before date.

Shelf Life from Time of Production	150 Days	Exempt From Shelf Life Labelling	No
---	----------	---	----

ACCREDITATIONS/ CERTIFICATIONS/ ASSURANCE SCHEMES



Other Accreditation

ISO 9001

ORIGIN	Product Country of Origin/Place of Provenance United Kingdom		
PRODUCT CHARACTERISTICS CONFIGURATION	Additional Origin Details		
	UK		
	Standards Testing		
	Case Configuration	Inner Pack Configuration	
	Variable Inner Components in Outer Case	No	
PRODUCT WEIGHTS	Total Quantity of Inner Components in Outer Case	2 Units	
	Is the Outer Case Splittable? No		
	Inner Component		
	Variable Weight Consumer Item e mark	Yes	
	e mark	Yes	
PRODUCT DIMENSIONS	Outer Case		
	Outer Case Gross Weight	2.57 kg	
	Outer Case Net Weight	2.46 kg	
	Inner Component		
	Inner Component Depth	130 mm	
	Inner Component Width	105 mm	
	Inner Component Height	243 mm	
PACKAGING	Outer Case		
	Outer Case Depth	0 mm	
	Outer Case Width	0 mm	
	Outer Case Height	0 mm	
PALLET INFORMATION	Quantity of Cases Per Pallet Layer	41 Cases	Pallet Height 1.4 MTR
	Quantity of Layers Per Pallet	5 Layers	
	Quantity of Cases Per Pallet	205 Cases	
OTHER INFORMATION	Inner Component Packaging		
	Type	Materials	Weight Recycled Plastic % Recyclable Returnable Composite
	Tub	Plastic / PP (Polypropylene)	110 g - %
CONTACT INFORMATION	Tub	Paper/Cardboard	2 g - %
	Manufacturer Comments		
N/A			
CONTACT INFORMATION	Address		
	Rich Sauces		
	England		

The information on the [Erudus System](#) has been supplied by the manufacturers of the products and, whilst the owners of the Erudus System take steps to ensure the information is regularly updated, they give no warranty and no guarantee that the information is accurate. Product information and ingredients may change, please always read product labels carefully in addition to using the information provided by Erudus.

We do not accept liability for any inaccuracies or incorrect information contained on this site. Please visit <http://www.erudus.com/terms-and-conditions> for full terms and conditions.