

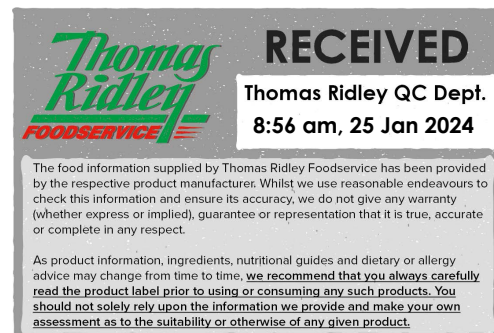
White Bread 6x800g

Kingsmill Professional Catering White Square Sandwich Bread 800g

PRODUCT DESCRIPTION

Kingsmill Professional Catering White Square Sandwich Bread 800g

Brand	Allied Bakeries
Manufacturer Product Code	8259
Product Type	Food
Product Category	Bread and Bread Products
Storage Type	Frozen
Erudus ID	6cf03cdf606b466cb10aacde77681ab1
Specification Type	Legacy
Inner Component GTIN	5010092825912
Outer Case GTIN	5010092825929



INGREDIENTS

Ingredient Declaration

WHEAT Flour (with calcium, iron, niacin (B3) and thiamin (B1)), Water, Yeast, Salt, Emulsifiers: E471, E472e. Vinegar, Preservative: Calcium Propionate. Flour Treatment Agent: Ascorbic Acid (Vitamin C).

ALLERGENS

Product Contains:

Celery/Celeriac	No	Mustard	No
Cereals Containing Gluten	Yes	Nuts (Tree)	No
Barley	No	Almond nuts	No
Oats	No	Brazil nuts	No
Rye	No	Cashew nuts	No
Wheat (including Spelt and Khorasan)	Yes	Hazelnuts	No
Gluten content <20ppm	No	Macadamia (Queensland) nuts	No
Crustacea	No	Pecan nuts	No
Eggs	No	Pistachio nuts	No
Fish	No	Walnuts	No
Lupin	No	Peanuts	No
Milk	No	Sesame Seeds	No
Molluscs	No	Soybeans	May Contain
		Sulphur Dioxide and Sulphites	No

Risk Source:

Additional Allergen Information

May also contain SOYA

SUPPLEMENTARY INGREDIENT INFORMATION

Palm Oil	Yes
Hydrogenated Vegetable Oil/Fat	No
GM Protein/DNA	No

ADDITIVES

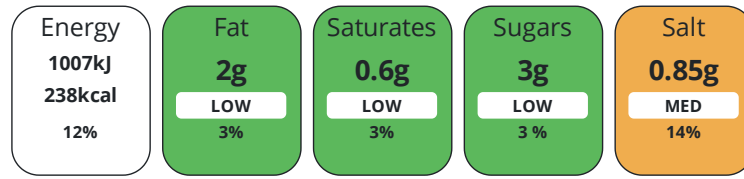
Product Contains:

Artificial Antioxidants	No	Artificial Flavourings	No
Artificial Colours	No	Artificial Preservatives	Yes
Artificial Flavour Enhancers	No	Artificial Sweeteners	No
Suitable for Coeliacs	No	Halal Diet	Suitable for
Kosher Diet	Suitable for	Vegetarian Diet	Suitable for
Vegan Diet	Suitable for		

DIET SUITABILITY

NUTRITIONAL INFORMATION

Each 100g/ml portion contains:



of your reference intake.

Typical values per 100g/ml : Energy 238kcal / 1007kj

Nutrient	per 100g/ml	RI per 100g/ml	per 38g/ml serving	RI per 38g/ml serving
Energy (kJ)	1007 kJ	12%	382.7 kJ	5%
Energy (kcal)	238 kcal	12%	90.4 kcal	5%
Fat	2 g	3%	0.8 g	1%
of which Saturates	0.6 g	3%	0.2 g	1%
Carbohydrate	44.5 g	17%	16.9 g	7%
of which Sugars	3 g	3%	1.1 g	1%
Fibre	2.3 g		0.9 g	
Protein	9.3 g	19%	3.5 g	7%
Salt	0.85 g	14%	0.3 g	5%

Serving Size 38 g

SUPPLEMENTARY NUTRITIONAL INFORMATION

HANDLING & STORAGE INFORMATION

Directions For Use

Keep Frozen: Store at -18°C or below. Defrost Instructions: Allow to defrost in a dry, clean environment at room temperature for approximately 2-3 hours or until fully defrosted. After defrosting, store in a cool dry place and use within 5 days. Once opened reseal bag to retain freshness. Once defrosted do not re-freeze.

Storage Instructions

Keep Frozen: Store at -18°C or below. Defrost Instructions: Allow to defrost in a dry, clean environment at room temperature for approximately 2-3 hours or until fully defrosted. After defrosting, store in a cool dry place and use within 5 days. Once opened reseal bag to retain freshness. Once defrosted do not re-freeze.

Shelf Life from Time of Production 365 Days

ACCREDITATIONS/ CERTIFICATIONS/ ASSURANCE SCHEMES



ORIGIN	Product Country of Origin/Place of Provenance United Kingdom						
	Additional Origin Details						
	Produced in the UK. The primary ingredient, wheat flour (50-60% of finished product), is UK milled using predominantly UK wheat.						
PRODUCT CHARACTERISTICS	Standards Testing						
	Do you undertake trend analysis of microbiological results?	Yes	Is shelf life testing undertaken?		Yes		
CONFIGURATION	Case Configuration		Inner Pack Configuration				
	Total Quantity of Inner Components in Outer Case	6 Units	Count per Inner Component		21		
	Is the Outer Case Splittable?	Yes					
PRODUCT WEIGHTS	Inner Component						
	Variable Weight Consumer Item	No					
	Inner Component Weight	800 g					
	Outer Case						
	Outer Case Gross Weight	6.79 kg					
	Outer Case Net Weight	4.8 kg					
PRODUCT DIMENSIONS	Inner Component						
	Inner Component Depth	245 mm					
	Inner Component Width	115 mm					
	Inner Component Height	118 mm					
	Outer Case						
	Outer Case Depth	502 mm					
	Outer Case Width	232 mm					
	Outer Case Height	292 mm					
PALLET INFORMATION	Quantity of Cases Per Pallet Layer	11 Cases	Pallet Height		1.94 MTR		
	Quantity of Layers Per Pallet	6 Layers					
	Quantity of Cases Per Pallet	66 Cases					
PACKAGING	Inner Component Packaging						
	Type	Materials	Weight	Recycled Plastic %	Recyclable	Returnable	Composite
	Bag	Plastic	6.07 g	0.00 %			
	Bag	Paper/Cardboard	0.02 g	- %			
	Outer Case Packaging						
	Type	Materials	Weight	Recycled Plastic %	Recyclable	Returnable	Composite
	Case	Paper/Cardboard	278 g	- %			
OTHER INFORMATION	Manufacturer Comments						
	Product delivered in cardboard boxes on a pallet.						

CONTACT
INFORMATION

Address

Allied Bakeries
1 Vanwall Place
Vanwall Business Park
Maidenhead
SL6 4UF
United Kingdom

P: (Phone) 01628 764300

Technical Contact

Erika Fehervari
Head of Technical Assurance
TechnicalStandards@atcentre.co.uk

P: (Phone) 07751741973

The information on the [Erudus System](#) has been supplied by the manufacturers of the products and, whilst the owners of the Erudus System take steps to ensure the information is regularly updated, they give no warranty and no guarantee that the information is accurate. Product information and ingredients may change, please always read product labels carefully in addition to using the information provided by Erudus.

We do not accept liability for any inaccuracies or incorrect information contained on this site.

Please visit <http://www.erudus.com/terms-and-conditions> for full terms and conditions.